

SERIES 75

.375" PCB Tri-Barrier Terminal Strip

Description

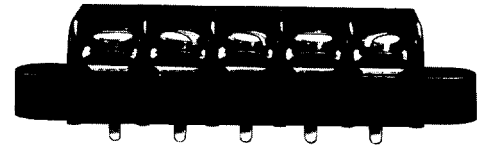
The series 75, tri-barrier PCB terminal strip is designed to meet the demanding requirements of safety agencies. The tri-barrier construction and optional hinged cover prevent shorting and accidental shock.

The product is extremely versatile and is available with a wide range of screw, terminal and hardware options.

Made in the USA, all Beau terminal blocks embody the highest quality standards in the industry-using the finest materials and world class manufacturing processes. They meet or exceed all applicable industry standards.

Features

- **Prevents shorting** the tri-barrier construction and optional hinged cover prevents accidental shock. The product meets safety agency "finger probe" tests.
- **Molded to exact length**, with no ugly saw cuts, Beau terminal strips make your products look more professional. The terminal block is the one component that your customer is sure to see.
- **Wide variety of options.** Our broad range of screw, terminal, hardware and mounting options allows us to save you assembly costs and improve interconnect performance.



PRODUCT RATINGS

#6-32 BINDING HEAD SCREW

UL	Class B	15 Amps @ 300 V 14 AWG
	Class C	15 Amps @ 300 V 14 AWG
CSA	Class B	20 Amps @ 300 V 14 AWG
	Class C	20 Amps @ 300 V 14 AWG
	Class D	10 Amps @ 300 V 14 AWG

#6-32 WIRE CLAMP SCREW

UL	Class B	25 Amps @ 300 V 12 AWG
	Class C	25 Amps @ 300 V 12 AWG
CSA	Class B	25 Amps @ 300 V 12 AWG
	Class C	25 Amps @ 300 V 12 AWG
	Class D	10 Amps @ 300 V 12 AWG

NOTE: 3.5M screws carry #6-32 screw ratings.

APPROVALS

UL	File No. E48521 Guide No. XCFR2
CSA	File No. 025562

TECHNICAL SPECIFICATIONS

ELECTRICAL

DWV	10500 VDC
IR	>5000 Megohms

MECHANICAL

Maximum torque	8 in.-lbs.
Destructive torque	13 in.-lbs.
Wire strip length	5/16"
Wire range	12 to 24 AWG

ENVIRONMENTAL

Continuous Use Temp	
RTI electrical	160°C
RTI mechanical w/o impact	160°C

MATERIALS

Insulator	Thermoplastic, UL94V0, black
Terminal	Brass, tin-lead plate
Screws	#6-32, phillips/slotted, steel, zinc chromate plate

OPTIONS

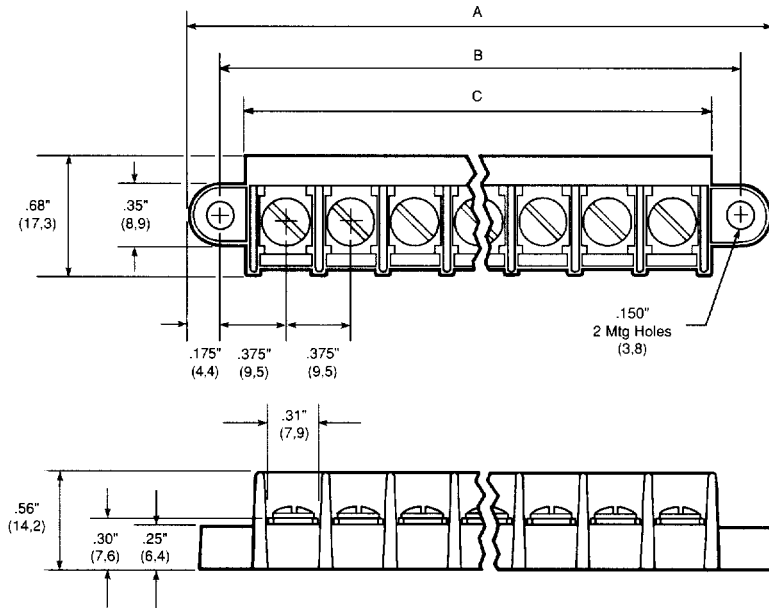
-45	Slotted screw
-45-56	Stainless steel screws, slotted
-47	Screws up, wire ready
-49	Brass, phillips/slotted screw
-50	Clamp washer, phillips/slotted screw
-58	No screws, barrier only
-59	Screws supplied unassembled
-C	No mounting ends
-F	Rap-attach mounts
-H	Hinged cover
-M	3.5 M screw, slotted
-P	.040" standoff pads
-V	130°C insulator

HOW TO ORDER

7	5	X	X	X	X	X
SERIES	TERMINAL STYLE	NO. OF POLES	OPTIONS			
	1 5 7	2 to 26	(Dash #s above and opposite page)			
	8					

*Consult factory for combinations of screw options.

SERIES 75



No. of Circuits	A		B		C	
	in.	mm	in.	mm	in.	mm
2	1.48	37.5	1.13	28.7	.82	22.4
3	1.85	47.0	1.50	38.1	1.20	30.4
4	2.23	56.6	1.88	47.8	1.57	39.9
5	2.60	69.9	2.25	57.2	1.95	49.5
6	2.98	75.6	2.63	66.8	2.32	59.0
7	3.35	85.1	3.00	76.2	2.70	68.5
8	3.73	94.6	3.38	85.9	3.07	78.0
9	4.10	104	3.75	95.3	3.45	87.6
10	4.48	114	4.13	105	3.82	97.1
11	4.85	123	4.50	114	4.20	107
12	5.23	133	4.88	124	4.57	116
13	5.60	142	5.25	133	4.95	126
14	5.98	152	5.63	143	5.32	135
15	6.35	161	6.00	152	5.70	145
16	6.73	171	6.38	162	6.07	154
17	7.10	180	6.75	171	6.45	164
18	7.48	190	7.13	181	6.82	173
19	7.85	199	7.50	191	7.20	183
20	8.23	209	7.88	200	7.57	192
21	8.60	218	8.25	210	7.95	202
22	8.98	228	8.63	219	8.32	211
23	9.35	237	9.00	229	8.70	221
24	9.73	247	9.38	238	9.07	230
25	10.10	257	9.75	248	9.45	240
26	10.48	266	10.13	257	9.82	249

TERMINAL STYLES

STYLE 1
No PC
Terminal

STYLE 5
PC

.20" (5.1)
.18" (4.6)
Option .045" X .032" -N (1.1 X 0.8)
.062" X .032" (1.6 X 0.8)

STYLE 7
Wire Wrap

.47" (11.9)
.18" (4.6)
.062" X .032" (1.6 X 0.8)

STYLE 8
Right Angle PC

.22" (5.6)
.08" (2.0)
.062" X .032" (1.6 X 0.8)