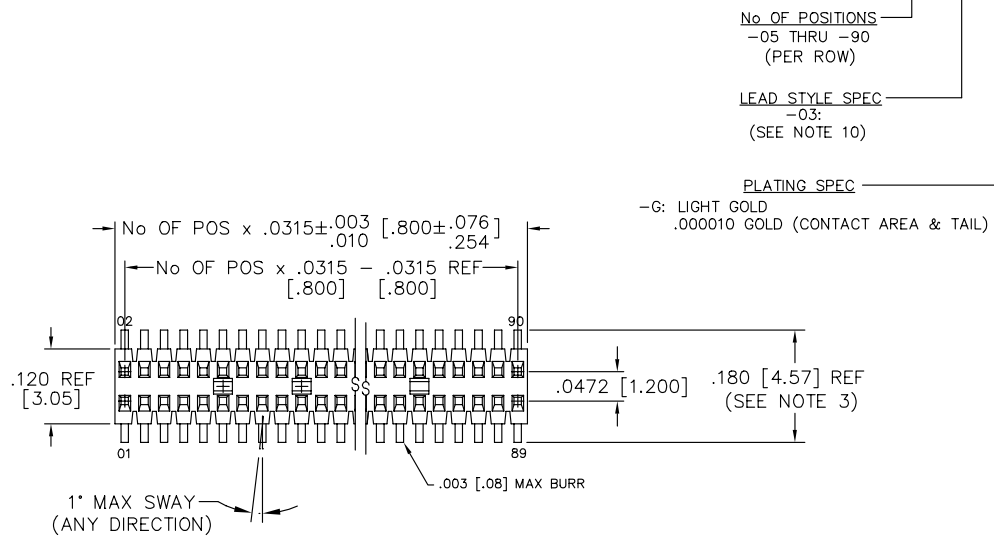


REVISION AD

UNLESS OTHERWISE NOTED		TITLE:	DWG NO:
DIMENSIONS ARE IN INCHES		.8MM x 1.2MM C.L.	AW-XX-03-X-D-XXX-XXX-XX
TOLERANCES ARE:		TERMINAL STRIP ASSM	SHEET 1 OF 3
ONE PLACE DECIMALS ±.1[2.5]	THREE PLACE DECIMALS ±.005[.13]	ANGLES ± 2°	
TWO PLACE DECIMALS ±.01[.3]	FOUR PLACE DECIMALS ±.0020[.051]		

AW-XX-03-X-D-XXX-XXX-XX



- OPTIONS
- P: PICK & PLACE PAD (8 POS MIN, SEE FIG. 2, SHEET 2)
 - ES: END SHROUD (SEE FIG. 4 SHEET 2 FOR SNAPPED-ON) (USE FTE-ES, 11 POS MIN) (SEE NOTE 5) (SEE FIG. 7 SHEET 3 FOR MOLDED) (5 POS MIN)
 - EP: END SHROUD GUIDE POST (SEE FIG. 4 SHEET 2) (USE FTE-EP, 11 POS MIN) (SEE NOTE 5)
 - A: ALIGNMENT PIN OPTION MOLDED (04-90 POSITIONS) (SEE FIG 5 SHEET 2) (MOLDED NOT AVAILABLE ON ALL POS) STAKED (08-90 POSITIONS) (SEE FIG 6 SHEET 2) (SEE NOTE 6)
 - TR: TAPE & REEL OPTION (84 POSITIONS MAX)
- POST HEIGHT
- .075 [1.91] MINIMUM
 - POST + SPACE = .305 [7.75] MAX
- SPACE OPTION
- "A": .230 [5.84] MAX w/ .075 [1.91] POST
 - .122 [3.09] MIN
- ROW SPEC
- D: DOUBLE ROW VERTICAL (SEE NOTE 4)

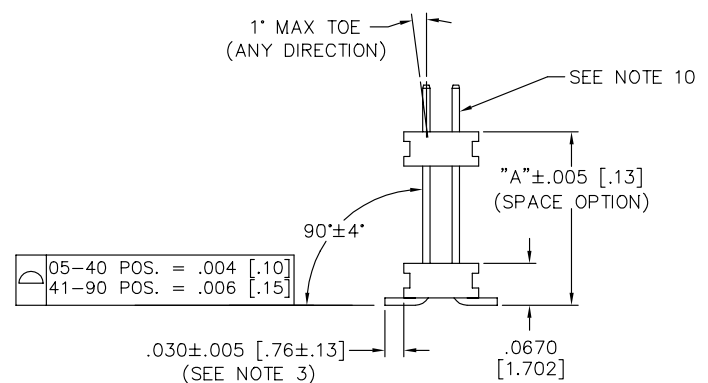
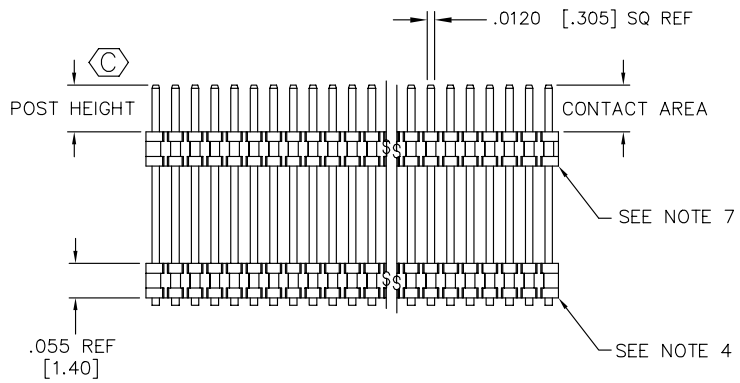


FIG. 1

- NOTES:
- NOTE DELETED
 - MINIMUM PUSHOUT FORCE: .5 LBF.
 - TAILS TO BE SHEARED TO DIMENSION SHOWN.
 - BOTTOM BODY USE FTE-90-D FOR HANDFILL, USE AW-90-D-A FOR AUTOMATION.
 - FOR USE WITH .075 [1.91] POST HEIGHT ONLY
 - FOR USE WITH BOARD STACKS BETWEEN .160 [4.06] AND .230 [5.84] ONLY.
 - USE FTE-90-D-A FOR TOP BODY (PLACE BODY SO THAT ALIGNMENT PIN CORES ARE NOT VISIBLE).
 - .010 [.25] MAX CUT FLASH
 - ⊕ REPRESENTS A CRITICAL DIMENSION.
 - USE T-1S29-02-X FOR MACHINE FILLED. USE T-1S29-04-X FOR HAND FILLED.

PROPRIETARY NOTE
THIS DOCUMENT CONTAINS INFORMATION CONFIDENTIAL AND PROPRIETARY TO SAMTEC INC. AND SHALL NOT BE REPRODUCED OR TRANSMITTED TO OTHER DOCUMENTS OR INCULCATED TO OTHERS OR USED FOR ANY PURPOSE OTHER THAN THAT FOR WHICH IT WAS OBTAINED WITHOUT THE EXPRESSED WRITTEN CONSENT OF SAMTEC INC.

MATERIAL:
BODY: VECTRA E130i
COLOR: BLACK (TOP)
NATURAL (BOTTOM)

TERMINAL:
PHOS BRONZE

samtec

EXISPROD\ASSEMBLY\POINTMM AW-ASM
520 PARK EAST BLVD. NEW ALBANY, INDIANA 47150
PHONE (812) 944-6733 P.O. BOX 1147
CODE 55322

MADE BY: PURVIS 12-14-95 AW-XX-03-X-D-XXX-XXX-XX SHEET 1 OF 3

DIMENSIONS ARE IN INCHES

UNLESS OTHERWISE NOTED

TOLERANCES ARE:

ONE PLACE DECIMALS ±.1[2.5]
TWO PLACE DECIMALS ±.01[.3]

THREE PLACE DECIMALS ±.005[.13]
FOUR PLACE DECIMALS ±.0020[.051]

ANGLES
± 2°

TITLE:
.8MM x 1.2MM C.L.
TERMINAL STRIP ASSM

DWG NO:
AW-XX-03-X-D-XXX-XXX-XX
SHEET 2 OF 3

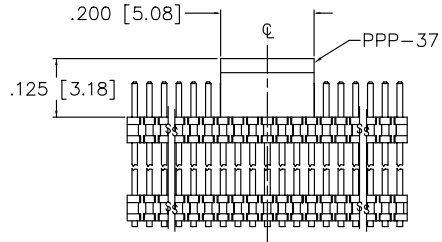


FIG. 2
SCALE: .75x
(8 POSITIONS MINIMUM)

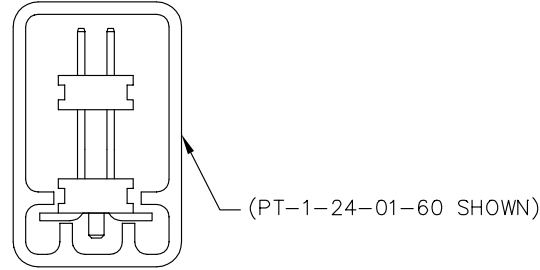


TABLE 1		
OPTIONS	PACKAGING TUBE	PLUG
NONE, -A, -ES	PT-1-24-01-60	TP-03
-P, -A-P, -ES-P	PT-1-24-02-60	TP-03

FIG. 3
PACKAGING

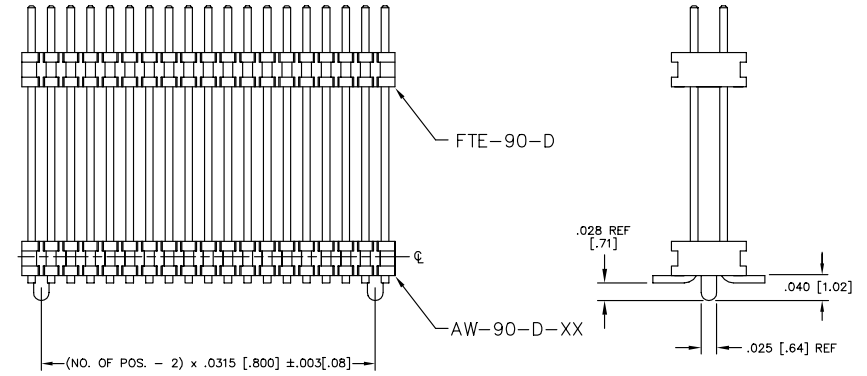


FIG. 5
(DIFFERENT AS SHOWN, OTHERWISE SAME AS FIG. 1)
-A OPTION
MOLDED
(4 POS MIN)

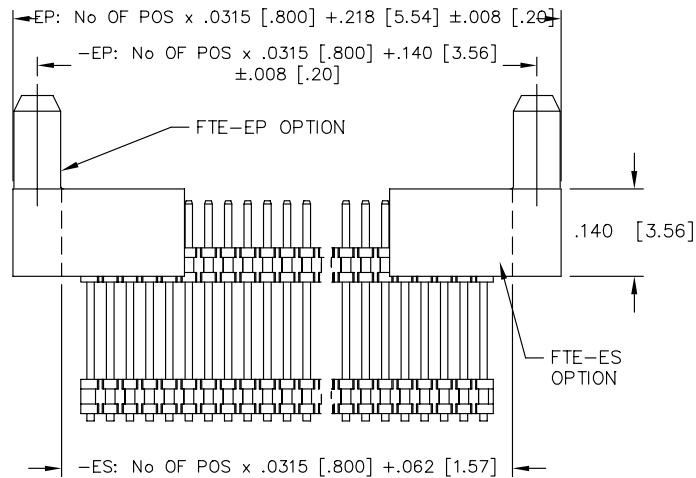
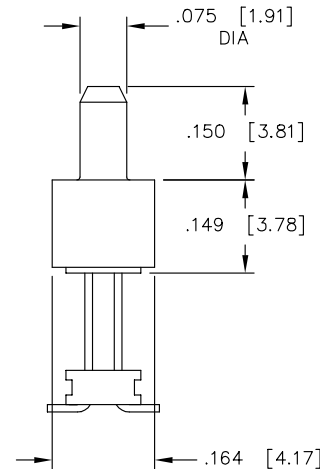


FIG. 4
POST HEIGHT MUST BE .075 [1.91]
(DIFFERENT AS SHOWN, OTHERWISE SAME AS FIG. 1)



EXISPROD\ASSEMBLY\POINT8MM
AW-ASM2
samtec

520 PARK EAST BLVD. NEW ALBANY, INDIANA 47150
PHONE (812) 944-6733 P.O. BOX 1147
CODE 55322

MADE BY: PURVIS 12-14-95 AW-XX-03-X-D-XXX-XXX-XX
SHEET 2 OF 3

PROPRIETARY NOTE
THIS DOCUMENT CONTAINS INFORMATION
CONFIDENTIAL AND PROPRIETARY TO
SAMTEC INC. AND SHALL NOT BE
REPRODUCED OR TRANSMITTED TO
OTHER DOCUMENTS OR INCULCATED
OR USED FOR ANY PURPOSE
OTHER THAN THAT FOR WHICH IT WAS
OBTAINED WITHOUT THE EXPRESSED
WRITTEN CONSENT OF SAMTEC INC.

REV. AD

DIMENSIONS ARE IN INCHES		UNLESS OTHERWISE NOTED		TOLERANCES ARE:		TITLE:	DWG NO:
ONE PLACE DECIMALS ±.1[2.5]	THREE PLACE DECIMALS ±.005[.13]	ANGLES ± 2°				.8MM x 1.2MM C.L. TERMINAL STRIP ASSM	AW-XX-03-X-D-XXX-XXX-XX
TWO PLACE DECIMALS ±.01[.3]	FOUR PLACE DECIMALS ±.0020[.051]						SHEET 3 OF 3

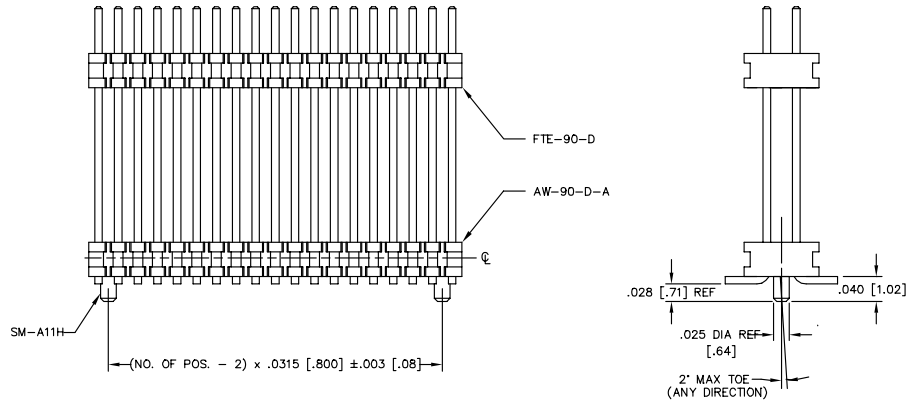


FIG. 6
(DIFFERENT AS SHOWN, OTHERWISE SAME AS FIG. 1)

-A OPTION
(STAKED)
(7 POS MIN)

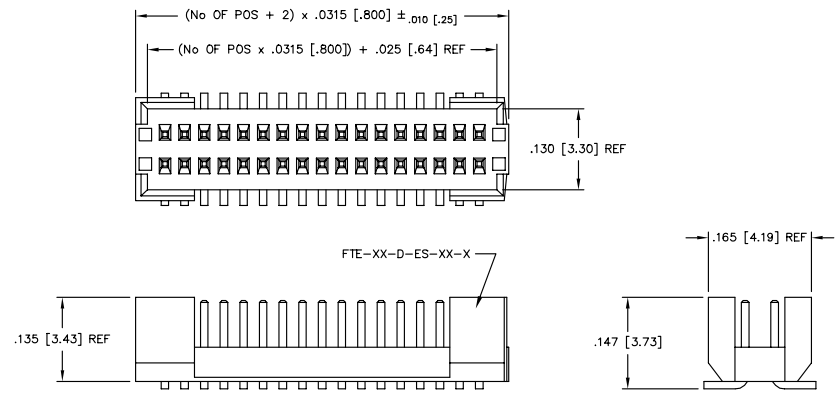


FIG. 7
(DIFFERENT AS SHOWN, OTHERWISE SAME AS FIG. 1)

-ES OPTION
(MOLDED)
(5 POS MIN)

PROPRIETARY NOTE
THIS DOCUMENT CONTAINS INFORMATION CONFIDENTIAL AND PROPRIETARY TO SAMTEC INC. AND SHALL NOT BE REPRODUCED OR TRANSMITTED IN ANY FORM OR BY ANY MEANS, ELECTRONIC OR MECHANICAL, INCLUDING PHOTOCOPYING, RECORDING, OR BY ANY INFORMATION STORAGE AND RETRIEVAL SYSTEM, WITHOUT THE EXPRESS WRITTEN CONSENT OF SAMTEC INC.

samtec

EXISPROD\ASSEMBLY\POINT8MM
AW-ASM2

520 PARK EAST BLVD. NEW ALBANY, INDIANA 47150
PHONE (812) 944-6733 P.O. BOX 1147
CODE 55322

MADE BY: PURVIS 12-14-95 AW-XX-03-X-D-XXX-XXX-XX
SHEET 3 OF 3