

Customer Information Sheet

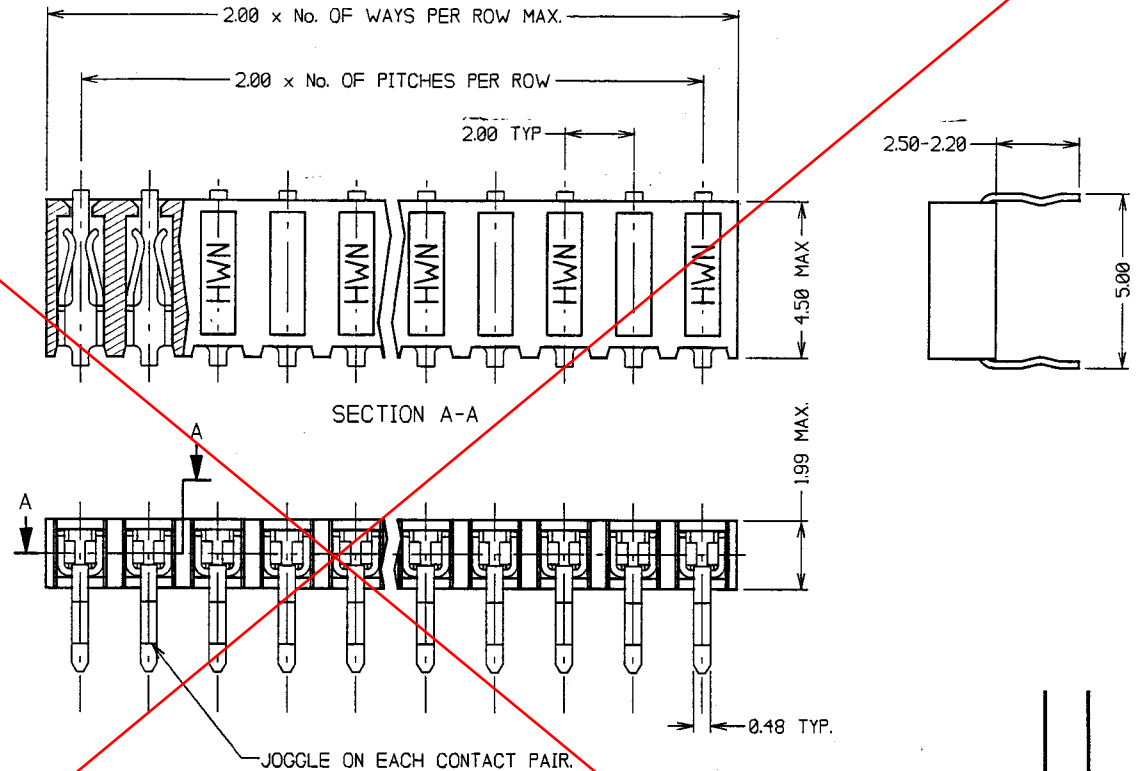
DRAWING No. M22-623XXXX SHEET 2 OF 2 IF IN DOUBT - ASK (C) NOT TO SCALE THIRD ANGLE PROJECTION ALL DIMENSIONS IN mm

ORDER CODE:
M22-623XXXX

No. OF WAYS
03 TO 25

FINISH:
06 = TIN
22 = SELECTIVE GOLD

OBSOLETE



SPECIFICATION

MATERIALS:
MOULDING - GLASS FILLED POLYESTER UL94V-0
CONTACTS - PHOSPHOR BRONZE

FINISH:
06 = 3.0µ TIN/LEAD
22 = 0.1-0.15µ GOLD ON CONTACT FACE, 3.0µ 90/10 TIN/LEAD ON TAILS

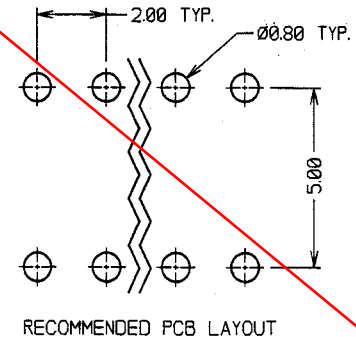
ELECTRICAL:
CURRENT RATING AT 25°C = 1.0A MAX.
VOLTAGE PROOF = 650V AC
CONTACT RESISTANCE (INITIAL) = 20 MILLIOHMS MAX (TIN), 15 MILLIOHMS MAX (GOLD)
CONTACT RESISTANCE (AFTER CONDITIONING) = 30 MILLIOHMS MAX. (TIN), 20 MILLIOHMS MAX. (GOLD)
INSULATION RESISTANCE (INITIAL) = 1000 MEGOHMS MIN.
INSULATION RESISTANCE (AFTER CONDITIONING) = 100 MEGOHMS MIN.

MECHANICAL:
DURABILITY = 300 OPERATIONS (GOLD), 50 OPERATIONS (TIN)
MAXIMUM INSERTION FORCE = 2.0N
MINIMUM INSERTION FORCE = 0.8N
MAXIMUM WITHDRAWAL FORCE = 1.0N
MINIMUM WITHDRAWAL FORCE 0.3N

ENVIRONMENTAL:
TEMPERATURE RANGE = -40°C TO +105°C

PACKING:
TUBE

FOR COMPLETE SPECIFICATION SEE COMPONENT SPECIFICATION C0018XX (LATEST ISSUE).



I	28.01.98	4254
B	13.10.97	4119
A	08.09.97	FOR TOOLING
ISS.	DATE	C/N
APPROVED:		
CHECKED:		
DRAWN:	D. BECK	
CUSTOMER REF.		
ASSEMBLY DRG.		

HARWIN			TOLERANCES X = ±1mm XX = ±0.25mm XXX = ±0.10mm XXXX = ±0.01mm ANGLES = ±1° UNLESS STATED	MATERIAL: SEE ABOVE FINISH: SEE ABOVE S/AREA: mm²	TITLE: 2mm PITCH SIL PG TAIL HORIZONTAL SOCKET ASSEMBLY. DRAWING NUMBER: M22-623XXXX	SHT 2 OF 2
HARWIN INC U.S.A. TEL: (812) 285 0055 FAX: (812) 285 0056	HARWIN PLC UK. TEL: 01705 370451 FAX: 01705 314598	HARWIN PTE SINGAPORE TEL: 65 7794909 FAX: 65 7793868				