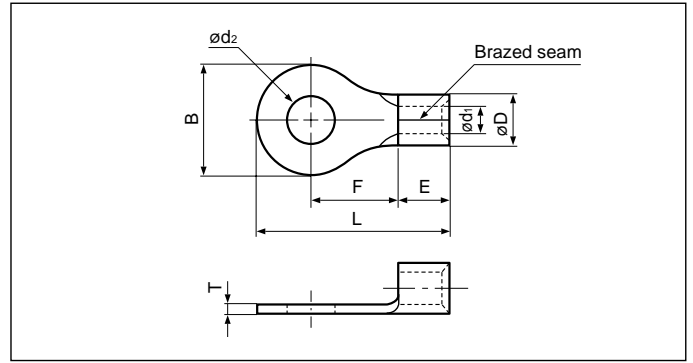


# RING TONGUE (R type) Non-insulated (Heavy duty)



	Applicable Wire AWG#(mm <sup>2</sup> )	Stud size		Part No.	Standard	Dimensions mm (in.)								Tool No.	Qty/box
		American	Metric			$\phi d_2$	B	L	F	E	$\phi D$	$\phi d_1$	T		
E type	22 to 16 (0.25 to 1.65)	5-6	3.5	1.25-3E		3.7 (.146)	8.0 (.315)	16.4 (.646)	7.6 (.299)	4.8 (.189)	4.0 (.157)	1.9 (.075)	1.0 (.039)	YHT-2210 YA-1, YA-2 YA-4 BCT-0514	1,000
		8	4	1.25-4E		4.3 (.169)	8.0 (.315)	16.4 (.646)	7.6 (.299)						
		10	5	1.25-5E		5.3 (.209)	8.0 (.315)	16.4 (.646)	7.6 (.299)						
	16 to 14 (1.04 to 2.63)	8	4	2-4E		4.3 (.169)	9.2 (.362)	18.6 (.732)	7.2 (.284)	6.8 (.268)	5.5 (.217)	2.3 (.091)	1.6 (.063)	YHT-2210 YA-1 YA-2 YA-4 BCT-0514	1,000  500
		10	5	2-5E		5.3 (.209)	9.2 (.362)	18.6 (.732)	7.2 (.284)						
		1/4	6	2-6E		6.4 (.252)	13.6 (.535)	25.3 (.996)	11.7 (.461)						
		5/16	8	2-8E		8.4 (.331)	13.6 (.535)	25.3 (.996)	11.7 (.461)						
		3/8	10	2-10E		10.5 (.413)	13.6 (.535)	25.3 (.996)	11.7 (.461)						
		7/16	12	2-12E	13.0 (.512)	19.0 (.748)	33.0(1.299)	16.7 (.657)							
	ES type	16 to 14 (1.04 to 2.63)	3-4	3	2-3.2ES		3.2 (.126)	7.1 (.280)	15.4 (.606)	5.7 (.224)	6.2 (.244)	5.5 (.217)	3.0 (.118)	1.2 (.047)	—
5-6			3.5	2-3ES	3.7 (.146)		7.1 (.280)	15.4 (.606)	5.7 (.224)						
8			4	2-4ES	4.3 (.169)		8.7 (.343)	17.8 (.701)	7.3 (.287)						
10			5	2-5ES	5.3 (.209)		8.7 (.343)	17.8 (.701)	7.3 (.287)						
1/4			6	2-6ES	6.4 (.252)		13.5 (.532)	24.2 (.953)	11.3 (.445)						
5/16			8	2-8ES	8.4 (.331)		13.5 (.532)	24.2 (.953)	11.3 (.445)						
3/8			9	2-9ES	9.8 (.386)		13.5 (.532)	24.2 (.953)	11.3 (.445)						
3/8			10	2-10ES	10.5 (.413)		13.5 (.532)	24.2 (.953)	11.3 (.445)						
3/8			10	2-L10ES	10.5 (.413)		19.0 (.748)	31.6(1.244)	16.0 (.630)						

Note: 1) The  $\phi D$  of products with the suffix "E" at the end of the part number is one size larger than the non-insulated terminal with the same part number.  
For the crimping tool jaws, select one size larger from among the three jaw sizes on the YHT-2210 crimping tool.

2) Contact JST concerning minimum lot size.

3) The part numbers indicated in the above table are for products with a brazed seam.

When ordering products with a butted seam, add the prefix "WS" to the part number (ex. 2-4E → **WS2-4E**).

4) Delivery lead times may vary depending on the product. Contact JST for details.