



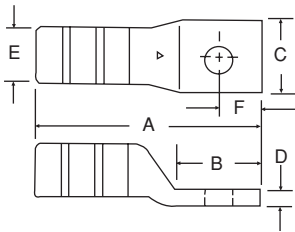
One Hole Lugs – 90°C, 600V to 35KV Applications

Made of high conductivity wrought aluminum, these connectors are designed and approved for aluminum and copper conductors, performing equally well on both metals.

Color-Keyed® connectors quickly identify the correct Color-Keyed® installing die, for positive compressions. Hardened steel dies compress the connector around the cable, changing the round strands to polygonal shapes and cold flowing the strands and connector into a solid homogenous mass.

Long compression areas assure complete contact and multiple compressions prevent creep of the aluminum conductor. Connectors are filled with a high temperature oxide inhibitor compound. Connectors are electro tin coated to prevent electrolytic corrosion when in contact with copper and assure lowest contact resistance.

Material – High Conductivity Wrought Aluminum
Finish – Electro-Tin Plated



Cat. No.	Cable Size AL/CU	Bolt Size(in.)	Color Code	Dimensions (in.)					
				A	B	C	D	E	F
60096	#10	#10	Red	1.09	.56	.41	.06	.270	.22
60097		1/4		1.31	.72	.43	.07	.270	.34
60099		3/8		1.53	.93	.58	.06	.270	.44
60101	#8	#10	Blue	1.22	.56	.41	.09	.280	.22
60102		1/4		1.38	.71	.44	.09	.280	.34
60103		5/16		1.56	.91	.60	.06	.280	.44
60104-TB		3/8		1.60	.93	.60	.06	.280	.44
60106	#6	#10	Gray	1.52	.59	.47	.13	.350	.22
60107		1/4		1.67	.75	.47	.13	.350	.34
60108		5/16		1.83	.91	.63	.09	.350	.44
60109		3/8		1.86	.93	.63	.09	.350	.44
60112	#4	1/4	Green	1.81	.75	.64	.19	.460	.34
60113		5/16		2.00	.91	.64	.19	.460	.44
60114		3/8		2.03	.93	.64	.19	.460	.44
60116	#2	1/4	Pink	1.91	.75	.72	.19	.510	.34
60117		5/16		2.06	.91	.72	.19	.510	.44
60118		3/8		2.09	.93	.72	.19	.510	.44
60120		1/2		2.25	1.41	.88	.13	.510	.69
60122	#1	1/4	Gold	2.30	.81	.75	.19	.560	.34
60123		5/16		2.39	.91	.75	.19	.560	.44
60124		3/8		2.42	.93	.75	.19	.560	.44
60126		1/2		2.89	1.41	.88	.16	.560	.69
60128	1/0	1/4	Tan	2.36	.81	.88	.19	.620	.34
60129		5/16		2.51	.97	.88	.19	.620	.44
60130		3/8		2.51	.97	.88	.19	.620	.44
60132		1/2		2.95	1.41	.94	.19	.620	.69
60134	2/0	1/4	Olive	2.48	.87	.97	.22	.700	.34
60135		5/16		2.64	1.03	.97	.22	.700	.44
60136		3/8		2.64	1.03	.97	.22	.700	.44
60138		1/2		3.10	1.41	1.03	.22	.700	.69
60140	3/0	1/4	Ruby	2.58	.87	1.06	.22	.770	.34
60141		5/16		2.83	1.09	1.06	.22	.770	.44
60142		3/8		2.83	1.09	1.06	.22	.770	.44
60144		1/2		3.15	1.41	1.06	.22	.770	.69
60147	4/0	5/16	White	3.53	.88	1.21	.25	.857	.38
60148		3/8		3.58	.93	1.21	.25	.857	.38
60150		1/2		3.90	1.25	1.21	.25	.857	.50
60151		5/8		4.65	2.00	1.21	.25	.857	.75
60154	250 kcmil	3/8	Red	3.73	.93	1.29	.27	.917	.38
60156		1/2		4.05	1.25	1.29	.27	.917	.50
60157		5/8		4.80	2.00	1.29	.27	.917	.75
60159	300 kcmil	5/16	Blue	3.75	.88	1.39	.28	.990	.38
60160		3/8		3.80	.93	1.39	.28	.990	.38
60162		1/2		4.13	1.25	1.39	.28	.990	.50
60165	350 kcmil	1/2	Brown	4.83	1.25	1.53	.33	1.090	.50
60166		5/8		5.58	2.00	1.53	.33	1.090	.75
60168	400 kcmil	1/2	Green	4.95	1.25	1.65	.38	1.180	.50
60171	500 kcmil	1/2	Pink	4.95	1.25	1.79	.38	1.280	.50
60172		5/8		5.70	2.00	1.79	.38	1.280	.75
60174	600 kcmil	5/8	Black	5.83	2.00	1.92	.37	1.360	.75
60176	700 kcmil	5/8	Purple	5.95	2.00	2.04	.38	1.440	.75
60178	750 kcmil	5/8	Yellow	6.03	2.00	2.13	.40	1.500	.75
60184	1000 kcmil	5/8	–	6.78	2.00	2.50	.50	1.770	.75

Tooling: Pg. 79-100
Die Selector Chart: Pg. 105-109