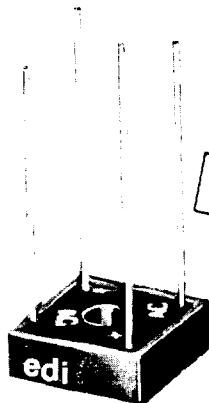


MINIBRIDGE®

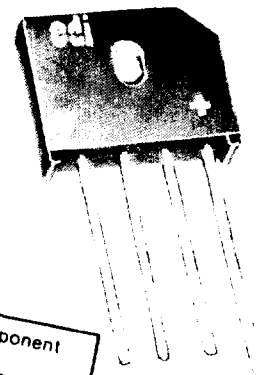
50 ns. ULTRA-FAST RECOVERY

2 to 6 Amperes

SINGLE-PHASE, FULL-WAVE BRIDGES
HEAT SINK • CHASSIS • PC BOARD MOUNTING



BRUS1
3A PC MOUNTING
4A HEAT SINK MOUNTING



BRUS5
5A PC BOARD MOUNTING
6A HEAT SINK MOUNTING

PRV/LEG	50V	100V	200V	400V	500V	600V	800V	1000V
BRUS1 SERIES	BRUS105	BRUS110	BRUS120	BRUS140	BRUS150	BRUS160	BRUS180	BRUS1100
BRUS5 SERIES	BRUS505	BRUS510	BRUS520	BRUS540	BRUS550	BRUS560	BRUS580	BRUS5100

ELECTRICAL CHARACTERISTICS PER LEG (at $T_A = 25^\circ\text{C}$ Unless Otherwise Specified)	SERIES DESIGNATION				UNITS
	BRUS1 50-600V	BRUS5 50-600V	BRUS1 800-1000V	BRUS5 800-1000V	
Average Output Current, I_O @ $60^\circ\text{C } T_C$ (Fig. 1)	4	6	3.5	5	Amp
Average Output Current, I_O @ $80^\circ\text{C } T_L$ (Fig. 2)	3	5	2	4	Amp
Max. Forward Voltage Drop, I_F <small>BRUS1 Series = 2A BRUS5 Series = 4A</small>	1.3	1.3	1.75	1.75	Volts
Max. DC Reverse Current @ PRV and 25°C , I_R	5	5	5	5	μA
Max. DC Reverse Current @ PRV and 100°C , I_R	100	100	100	100	μA
Max. Reverse Recovery Time, T_{rr} (Fig. 3)	50	50	75	75	Nanosec.
Max. Peak Surge Current, I_{FSM} (8.3ms) (Fig. 2)	100	240	75	175	Amp
Storage Temperature Range, T_{stg}	-55 to +150				$^\circ\text{C}$
Ambient Operating Temperature Range, T_A	-55 to +150				$^\circ\text{C}$
Thermal Resistance (Total Bridge), $R_{\theta j-c}$	7.7 typ.	8.7 typ.	11.5 typ.	9.0 typ.	$^\circ\text{C/W}$

NOTE: A thin film of silicone thermal compound is recommended between the MiniBridge® case and mounting surface for better thermal conduction.

EDI reserves the right to change these specifications at any time without notice.



ELECTRONIC DEVICES, INC.

21 GRAY OAKS AVENUE • YONKERS, NEW YORK 10710
 914-965-4400 • FAX 914-965-5531 • 1-800-678-0828



FIG. 1

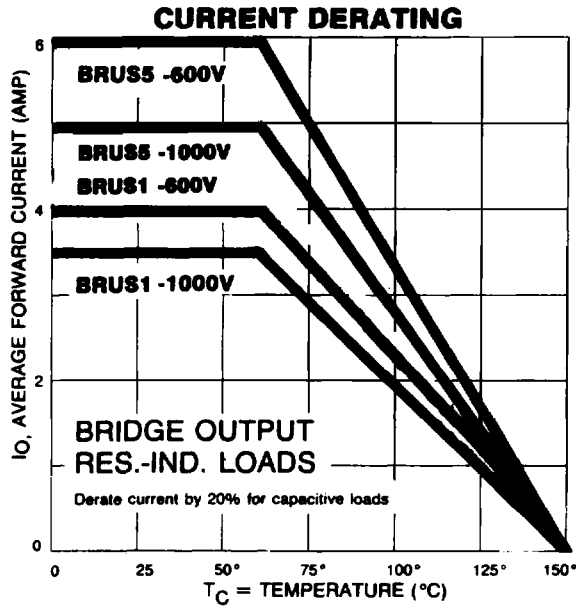


FIG. 2

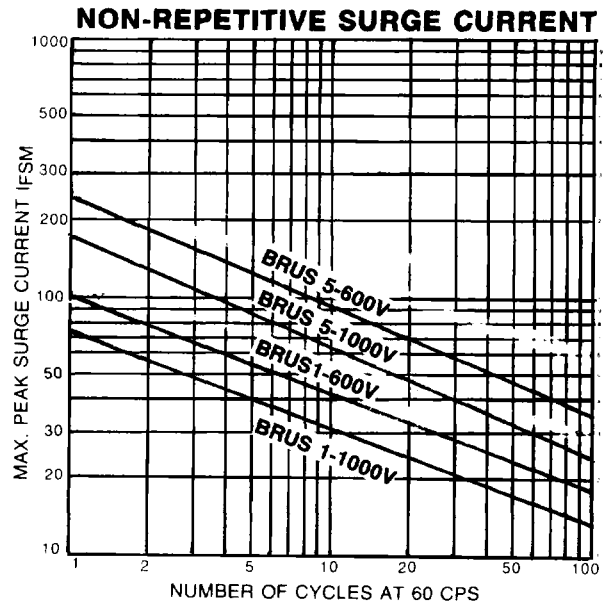
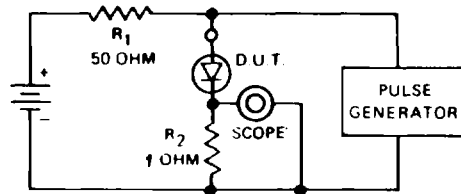
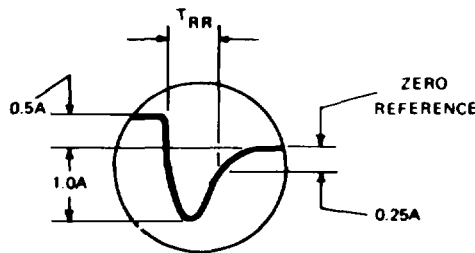


FIG. 3

REVERSE RECOVERY TEST METHOD

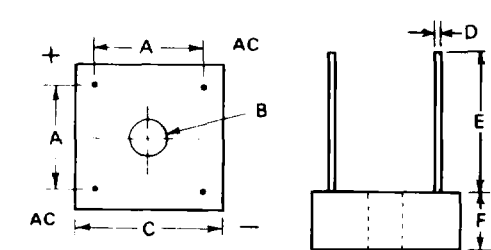


R_1, R_2 NON-INDUCTIVE RESISTORS
 PULSE GENERATOR - HEWLETT PACKARD 214A OR EQUIV.
 1KC REP. RATE, 10 μ SEC. PULSE WIDTH
 ADJUST PULSE AMPLITUDE FOR PEAK I_R

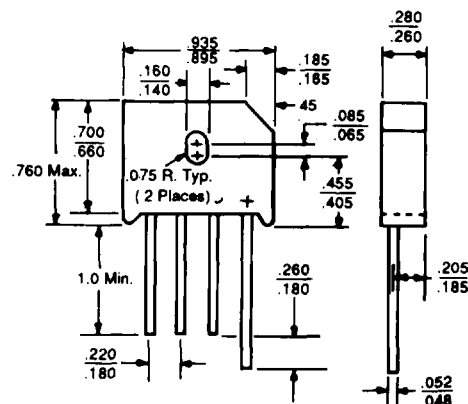
BRUS1 MECHANICAL OUTLINE

BRUS5 MECHANICAL OUTLINE

Dielectric test voltage 2500 volts rms, max. 50-60 Hz.



LTR	INCHES	MILLIMETERS
A	.411 - .441	10.44 - 11.20
B	.137 - .167 DIA	3.48 - 4.24 DIA
C	.590 - .610	14.99 - 15.49
D	.038 - .042	.97 - 1.07
E	.750 MIN	19.05 MIN
F	.300 MAX	7.62 MAX



Maximum lead and terminal temperature for soldering, 3/8 inch from case, 5 seconds at 250 $^{\circ}C$.

A thin film of silicone thermal compound is recommended between the Minibridge[®] case and mounting surface for improved thermal conduction.