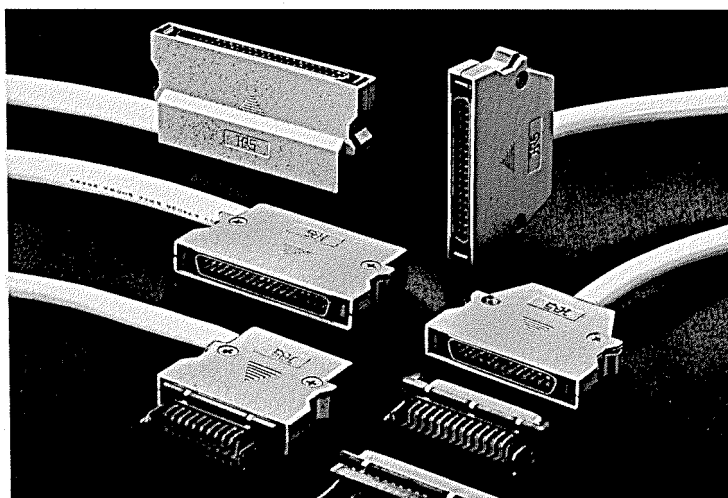


DN SERIES-NEW D SUBMINIATURE INTERFACE CONNECTORS

General

The DN series are compact, rectangular multi-contact connectors developed to meet the demand for smaller and slimmer electronic equipment. 2.54 mm grid contact position and Direct dip soldering on PCB enable

high density circuit designing at reduced cost. Aluminum die-cast shell and Metallic shell are shielded to prevent from Electro-Magnetic Interference. 20, 26, 36 and 50 way available.



Features

1. 2.54 mm grid contact position enable high density circuit designing.
2. Stable quality due to the contact design based on our field-proven SM series (D sub-connector).
3. One-touch lock system ensures perfect operation.
4. The cover case uses a thin, low-back compact design that meets the needs of high density mounting. It can be mounted between 17.78 millimeters (700mil) substrates.
5. The cover case is made of aluminum diecast to shield against electromagnetic waves. In a combination with a connector metal shell, the cover case is an ideal solution for noise.
6. Dip soldering connectors are provided with snap clamps for temporarily fixing the connector on the PCB.
7. IDC termination types are for standard 1.27 mm pitch cables, and are available for two types of cables: AWG26 and AWG28.
8. Crimp contact cables from AWG26 through AWG28.
9. Allows you to take out the cable vertically or horizontally, as your application requires.

Applications

Office Automation, Computers, Communications Equipment, Factory Automation, Home Automation and other commercial applications needing high density interconnections.

Specifications and Material

| Main specifications | |
|-----------------------|-----------------------------|
| Current capacity | 3A |
| Rated voltage | AC200V |
| Insulation resistance | 5000mΩ or higher at DC 500V |
| Contact resistance | 20mΩ or less at DC 100mA |
| Withstand voltage | 1 minute AC 1000 Vrms |

| Main materials used | | |
|---------------------|-------------------|------------------------|
| Shell | Aluminum del-cash | Silver coating |
| Insulator | PBT * | Black |
| Contacts | Phosphor bronze | Selective gold plating |

* UL94V-0

Ordering Information

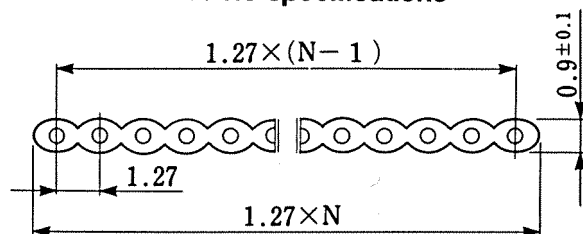
$\frac{\text{DN}}{(1)} \quad \frac{10}{(2)} - \frac{26}{(3)} \frac{S}{(4)}$

$\frac{\text{DN}}{(1)} - \frac{26}{(3)} - \frac{\text{CVE } 1}{(5)}$

$\frac{\text{DN}}{(1)} \quad \frac{50}{(2)} - \frac{2628}{(6)} \frac{\text{PC } 1}{(7)}$

- (1) Series Number: DN
- (2) Type
 - 10: Right Angle Dip Type
 - 30: IDC Plug Type
 - 50: Crimp Type
- (3) No. of Pins: 20, 26, 36 and 50 way
- (4) P: Plug
S: Receptacle
- (5) Shell
 - CVE1: Angle Cable Exit Shell
 - CV1: Straight Cable Exit Shell
- (6) Applicable Wire
 - 2628: AWG#26 ~ AWG#28
- (7) Type of Contact Pin
 - PC1: Bulk Pin Contact
 - PC2: Chain Pin Contact

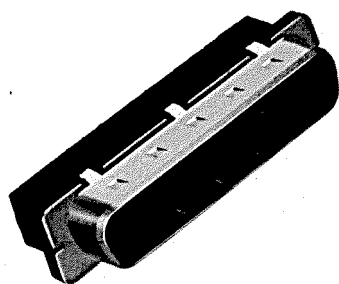
Cable specifications



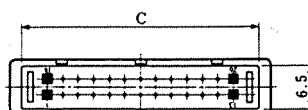
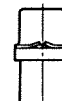
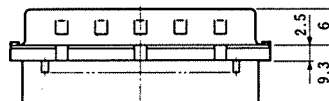
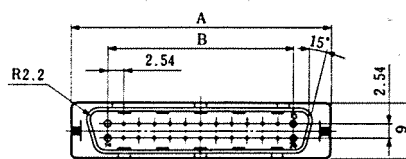
N: Pin

Pin: AWG# 28(7/0.127)
AWG# 26(7/0.16)

Crimp Pin Housing



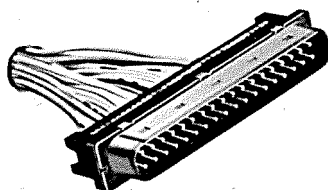
CL225-0004-4
DN50-26P



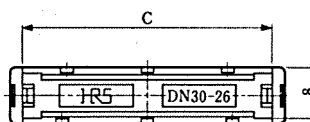
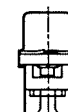
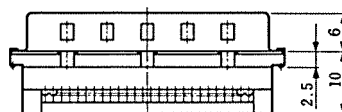
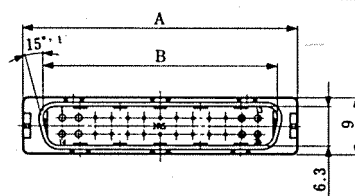
Unit: mm

| HRS No. | No. of Pin | Part No. | A | B | C |
|------------|------------|----------|-------|-------|-------|
| 225-0016-3 | 20 | DN50-20P | 35.36 | 22.86 | 31.38 |
| 225-0004-4 | 26 | DN50-26P | 42.98 | 30.48 | 39 |
| 225-0005-7 | 36 | DN50-36P | 55.68 | 43.18 | 51.7 |
| 225-0006-0 | 50 | DN50-50P | 73.46 | 60.96 | 69.48 |

IDC Plug



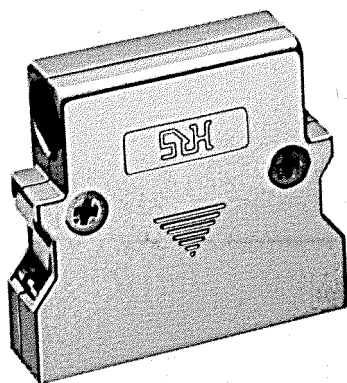
CL225-0027-0
DN30-36P



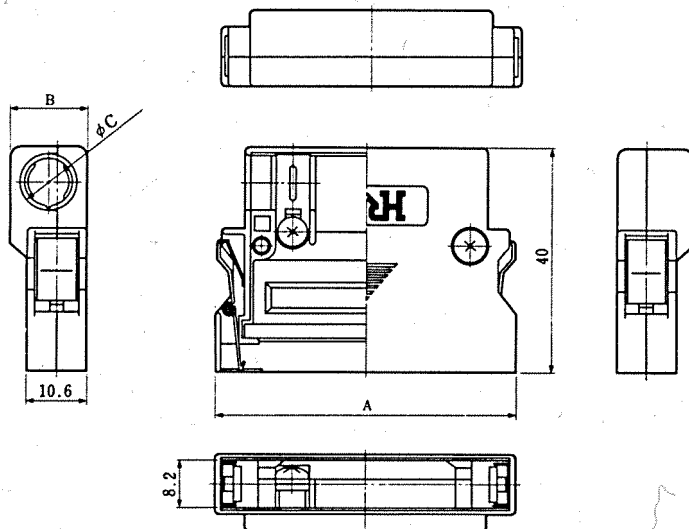
Unit: mm

| HRS No. | No. of Pin | Part No. | A | B | C |
|------------|------------|----------|-------|------|-------|
| 225-0030-4 | 20 | DN30-20P | 35.36 | 29.1 | 31.38 |
| 225-0029-5 | 26 | DN30-26P | 42.98 | 36.7 | 39 |
| 225-0027-0 | 36 | DN30-36P | 55.68 | 49.4 | 51.7 |
| 225-0028-2 | 50 | DN30-50P | 73.46 | 67.2 | 69.48 |

Angle Cable Exit Shell



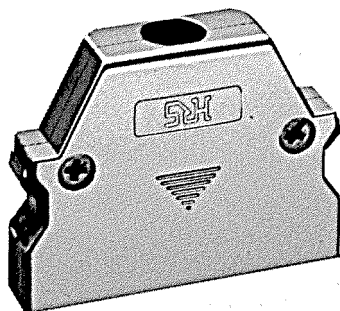
CL225-0020-0
DN-26-CVE1



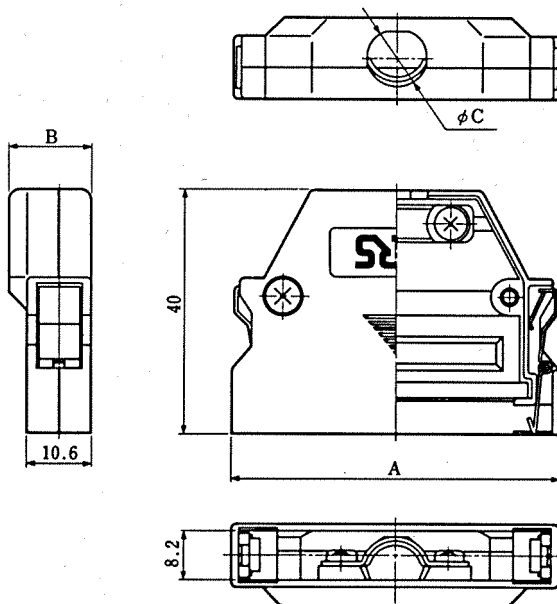
Unit:mm

| HRS No. | No.of Pin | Part No. | A | B | C |
|------------|-----------|------------|------|------|-------|
| 225-0019-1 | 20 | DN-20-CVE1 | 45.9 | 12.7 | 9 |
| 225-0020-0 | 26 | DN-26-CVE1 | 53.5 | 13.7 | 9.7 |
| 225-0021-3 | 36 | DN-36-CVE1 | 66.2 | 14.2 | 11 |
| 225-0022-6 | 50 | DN-50-CVE1 | 84 | 14.2 | 12X13 |

Straight Cable Exit Shell



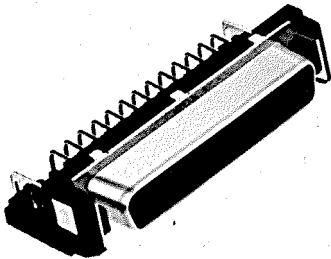
CL225-0024-1
DN-26-CV1



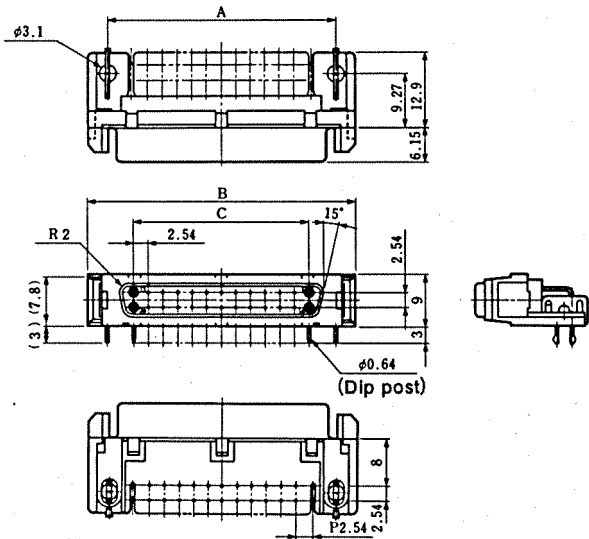
Unit:mm

| HRS No. | No.of Pin | Part No | A | B | C |
|------------|-----------|-----------|------|------|-----|
| 225-0031-7 | 20 | DN-20-CV1 | 45.9 | 13.7 | 9 |
| 225-0024-1 | 26 | DN-26-CV1 | 53.5 | 13.7 | 9.7 |
| 225-0025-4 | 36 | DN-36-CV1 | 66.2 | 14.2 | 11 |

Right Angle P.C. Mount Receptacle



CL225-0001-6
DN10-26S

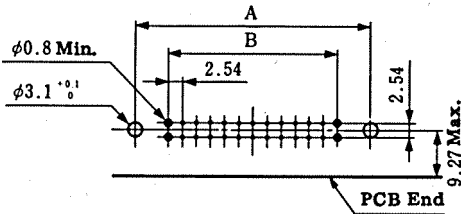


Note 1: Dimensions in () are for reference.

Unit: mm

| HRS No. | No.of Pin | Part No. | A | B | C |
|------------|-----------|----------|------|------|-------|
| 225-0015-0 | 20 | DN10-20S | 32 | 38.9 | 22.86 |
| 225-0001-6 | 26 | DN10-26S | 39.6 | 46.5 | 30.48 |
| 225-0002-9 | 36 | DN10-36S | 52.3 | 59.2 | 43.18 |
| 225-0003-1 | 50 | DN10-50S | 70.1 | 77 | 60.96 |

PCB Layout

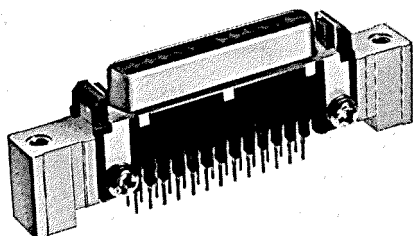


mounting panel thickness 1.6mm

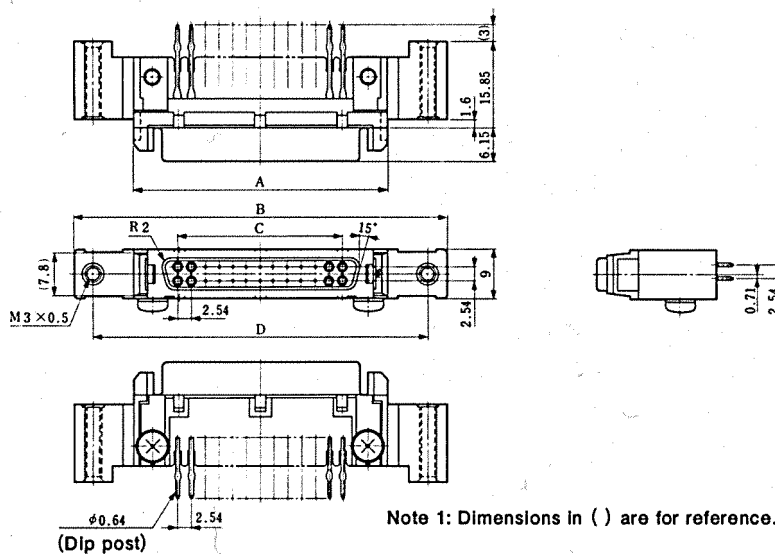
Unit: mm

| No. of Pin | 20 | 26 | 36 | 50 |
|------------|-------|-------|-------|-------|
| A | 32.0 | 39.6 | 52.3 | 70.1 |
| B | 22.86 | 30.48 | 43.18 | 60.96 |

Straight P.C. Mount Receptacle

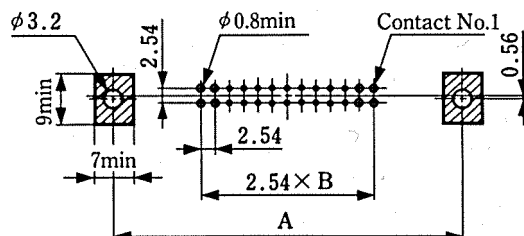


CL225-0046-0
DN20B-26S

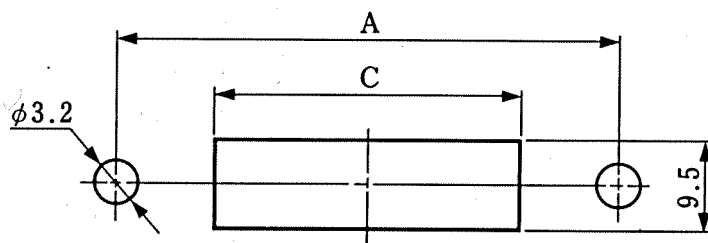


| HRS No. | No. of Pin | Part No. | A | B | C | D |
|------------|------------|-----------|------|------|-------|------|
| 225-0045-1 | 20 | DN20B-20S | 38.9 | 60.9 | 22.86 | 53.9 |
| 225-0046-4 | 26 | DN20B-26S | 46.5 | 68.5 | 30.48 | 61.5 |
| 225-0047-7 | 36 | DN20B-36S | 59.2 | 81.2 | 43.18 | 74.2 |
| 225-0048-0 | 50 | DN20B-50S | 77 | 99 | 60.96 | 92 |

PCB Layout



Panel Cutout

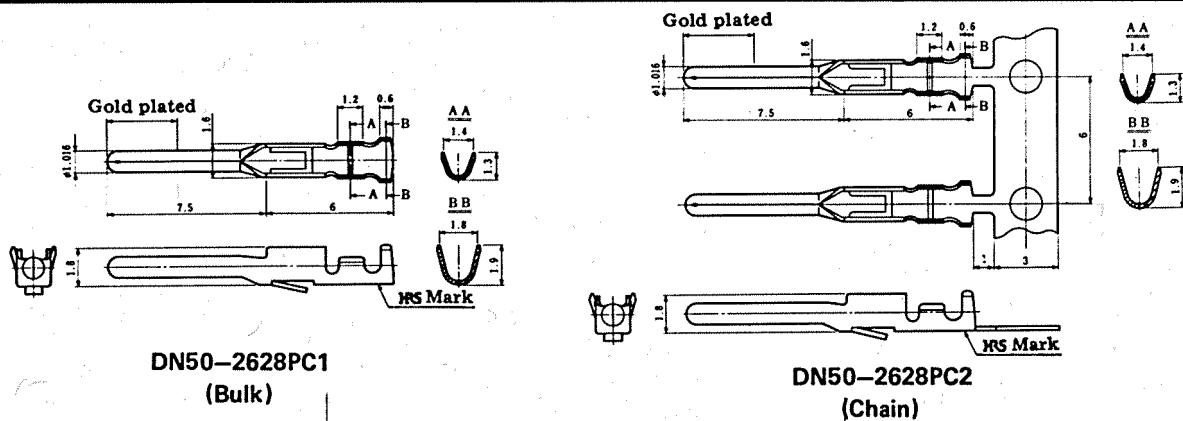


- Note: 1. Use a 1.6-mm thick panel
 2. The substrate reference drawing shows the connector-mounting surface. The area marked with [] is to be prohibited from entering any pattern.
 3. The substrate and panel are related to each other, with a 0/3.2 mounting hole as the reference point.
 4. The panel is 1.6 millimeters thick.

Unit:mm

| No. of Pin | A | B | C |
|------------|------|----|------|
| 20 | 53.9 | 9 | 40.9 |
| 26 | 61.5 | 12 | 48.5 |
| 36 | 74.2 | 17 | 61.2 |
| 50 | 92 | 24 | 79 |

Pin Crimp Terminal



Note: Bulk in bags of 100pcs. Chain on reels of 1,000pcs.

| HRS No. | Part No. | Remarks |
|------------|--------------|---------------------|
| 225-0007-2 | DN50-2628PC1 | Loose piece contact |
| 225-0008-5 | DN50-2628PC2 | Strip contact |

Applicable Wire

Applicable Wire: AWG No.26~AWG No.28

Outer diameter of applicable wire

Unit: mm

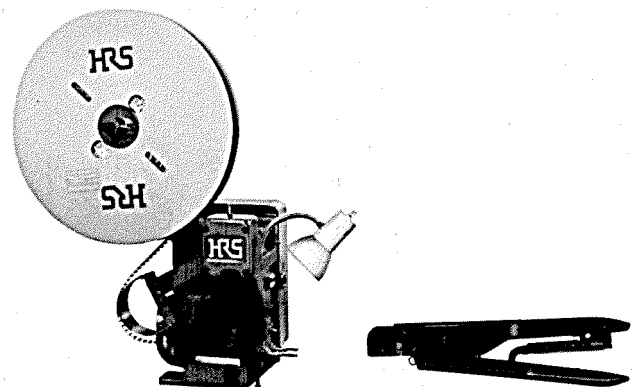
| Way | 20 | 26 | 36 | 50 |
|----------------|----------|----------|-----------|-----------|
| Outer diameter | Max. 9.0 | Max. 9.7 | Max. 11.0 | Max. 12.0 |

Tooling (for Crimp Plug)

• CM-105 Crimp Machine

This machine has been carefully designed to meet the many requests for advanced crimping machines that can be used in a wider range of applications. This machine offers easy setup adjustment and applicator mounting. We are confident that the machine will find many applications as an easy-to-use semi-automatic machine for crimping strip contacts.

| | |
|--------------|--------------------------------|
| POWER SOURCE | AC 100V 200W |
| TOTAL WEIGHT | 75 kgs |
| PERFORMANCE | 2,000 — 4,000 crimps per hour |
| WORK RANGE | Adaptable to other HIROSE dies |



Semi-Auto Machine

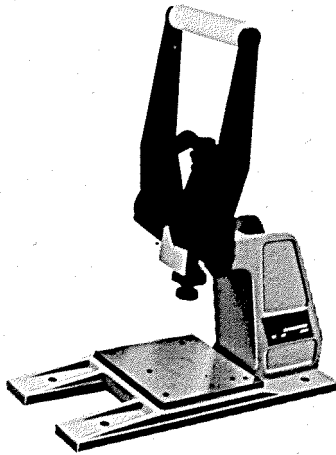
CM-105
(CL901-0005-4)
Applicator (Die) 105-DN50
(CL901-0208-1)

Hand Tool

DN50-TA2628HC
(CL250-0101-0)

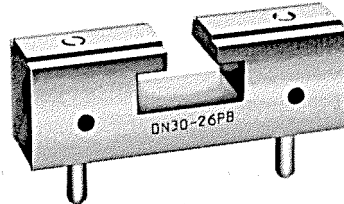
Tooling (for IDC Plug)

Hand Press



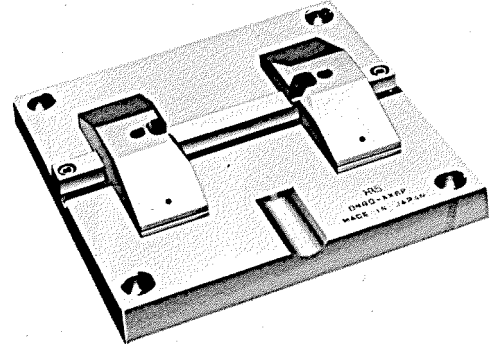
| HRS No. | Part No. |
|------------|---|
| 550-0082-2 | Hi-Flex termination press and accessories |

Pressure Block



| HRS No. | Part No. |
|------------|-----------|
| 902-0068-0 | DN30-26PB |
| 902-0069-3 | DN30-36PB |
| 902-0143-4 | DN30-20PB |
| 902-0144-7 | DN30-50PB |

Universal Guide Plate

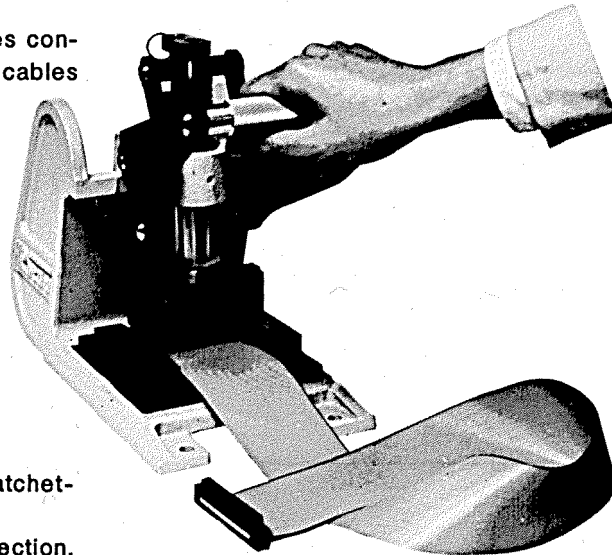


| HRS No. | Part No. |
|------------|-----------|
| 902-0067-8 | DN30-XXGP |

Hi-Flex Termination Press and Accessories

General

The Hi-Flex termination press and its accessories connect the connectors to the HIF series ribbon cables more securely and quickly.



Features

1. No incomplete connections. A preventive ratchet-type device ensures against misconnections.
2. Prevents damage to connectors during connection. The guide plate works as a stopper to prevent damage to connectors due to connection pressure.
3. Easy to position the connector and cable. The guide plate case guide and cable stopper help positioning.
4. Capable of cable connection at an intermediate point when the cable stopper is removed.