



LSH (E-2000™)

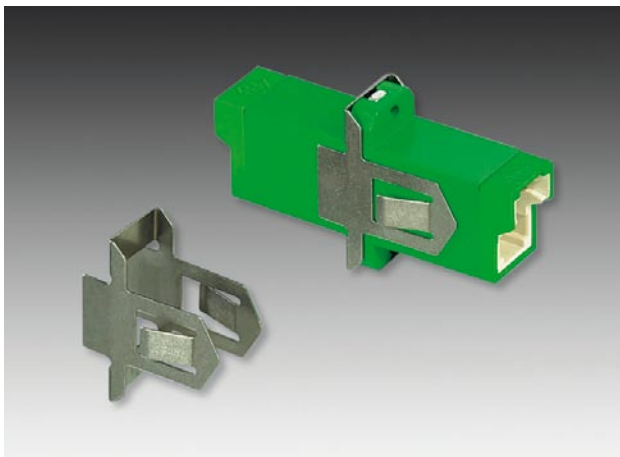
Ordering information: LSH connector, uncoded

Connector type	Polishing	Insertion loss ¹⁾ [dB] (mean/97%)	Cable Ø	Type
SM	PC/UPC	0.12/0.25	≤ 3.5	FLSH-2000-A105
SM	APC	0.12/0.25	≤ 3.5	FLSH-2000-A608
SM premium	PC/UPC	0.06/0.15	≤ 3.5	FLSH-2000-H101
SM premium	APC	0.06/0.15	≤ 3.5	FLSH-2000-H600
G50/125, G62.5/125	PC	0.2 / 0.5	≤ 3.5	FLSH-2000-B103
HCS200/230	PC	0.3 / 0.75	≤ 3.5	FLSH-2000-D101

1) IEC 61300-3-34 method 2

Ordering information: adapter

Adapter type	Mounting	Sleeve material	Colour	Type
SM	with 2-hole flange	zirconia ceramic	blue	FLSH-FLSH-D100
SM APC	with 2-hole flange	zirconia ceramic	green	FLSH-FLSH-D600
SM HighPower	with 2-hole flange	zirconia ceramic	blue	FLSH-FLSH-D110
SM APC HighPower	with 2-hole flange	zirconia ceramic	green	FLSH-FLSH-D610
MM	with 2-hole flange	zirconia ceramic	beige	FLSH-FLSH-D102
compact SM	integrated fixing springs	zirconia ceramic	blue	FLSH-FLSH-A100
compact APC	integrated fixing springs	zirconia ceramic	green	FLSH-FLSH-A600
compact SM HighPower	integrated fixing springs	zirconia ceramic	blue	FLSH-FLSH-A110
compact SM APC HighPower	integrated fixing springs	zirconia ceramic	green	FLSH-FLSH-A610
compact MM	integrated fixing springs	zirconia ceramic	beige	FLSH-FLSH-A101



Ordering information: accessories

Quick-mounting spring	Material	Type
25 pieces	metal	9801.93.A

- easy snap mounting

Manufacturing of E-2000™-connectors under licence of DIAMOND SA, CH-Loosne

LSH (E-2000™)

Mechanical coding system

The mechanical and colour coding system allows fast and secure installation of connectors and adapters, ensuring mating without risk of confusion. Connectors and adapters without coding are still available and fit on any coded piece.

Ordering information

Type		
FLSH-FLSH-D600-A	adapter code	
0	uncoded	same colour as adapter
1	red	coded
2	brown	coded
3	yellow	coded
4	orange	coded
5	purple	coded
6	white	coded
A	red	uncoded
B	brown	uncoded
C	yellow	uncoded
D	orange	uncoded
E	purple	uncoded
F	white	uncoded
G	green	uncoded
H	blue	uncoded
I	black	uncoded
J	grey	uncoded
K	pink	uncoded
L	turquoise	uncoded

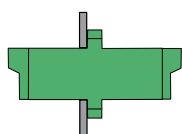
Type		
FLSH-2000-A101-C	connector code	
1	red	coded
2	brown	coded
3	yellow	coded
4	orange	coded
5	purple	coded
6	white	coded
A	red	uncoded
B	brown	uncoded
C	yellow	uncoded
D	orange	uncoded
E	purple	uncoded
F	white	uncoded
G	green	uncoded
H	blue	uncoded
I	black	uncoded
J	grey	uncoded
K	pink	uncoded
L	turquoise	uncoded

FLSH-FLSH-D600-A24 example with red/orange coding
 → coding frame at back
 → coding frame at front

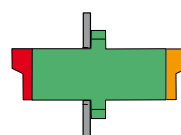


Examples:

FLSH-FLSH-D600 – green adapter without coding



FLSH-FLSH-D600-A14 – green adapter + red coding frame on frontside, orange coding frame on backside



FLSH-2000-A101 – blue connector without coding



FLSH-2000-A101-C1 – blue connector + red coding



Manufacturing of E-2000™-connectors under licence of DIAMOND SA, CH-Losone