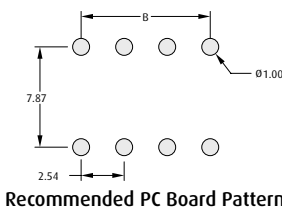
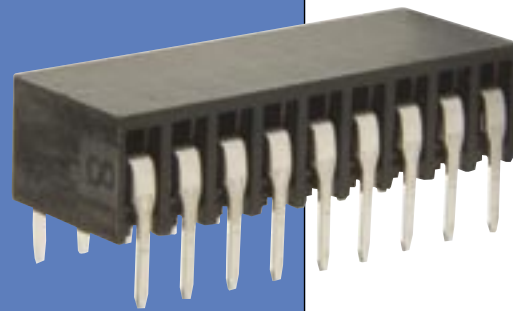


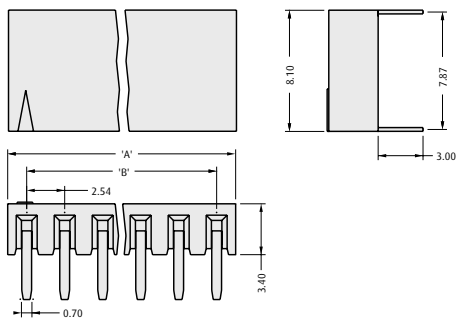
# M20 Connectors

## Horizontal PC Tail Female Connectors

- ❖ Suitable for use with male connectors shown on pages 52 to 57.
- ❖ Two point solder fixing for connector rigidity.



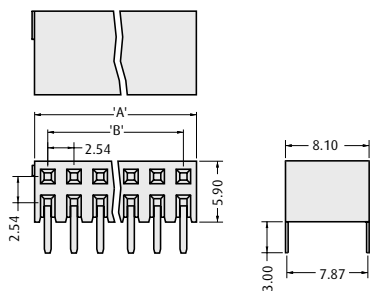
### SINGLE ROW



#### CALCULATION

<b>A</b>	$(2.54 \times \text{No. of ways per row}) + 0.2$
<b>B</b>	$2.54 \times (\text{No. of ways per row} - 1)$

### DOUBLE ROW



#### CALCULATION

<b>A</b>	$2.54 \times \text{No. of ways per row}$
<b>B</b>	$2.54 \times (\text{No. of ways per row} - 1)$

### HOW TO ORDER

**M20 - 78 X XX XX**

#### SERIES CODE

#### NO. OF ROWS

<b>8</b>	Double Row
<b>9</b>	Single Row

#### FINISH

<b>06</b>	Tin/Lead
<b>22</b>	Gold + Tin/Lead
<b>42</b>	Gold + Tin
<b>46</b>	Tin

#### NO. OF WAYS PER ROW

**02 to 40**

