

Surface Mount Bandpass Filter

SXBP-2150+

50Ω 2050 to 2250 MHz

The Big Deal

- Fast roll-off on the upper sideband
- Good Matching and low loss in the pass band
- Miniature shielded package



CASE STYLE: HF1139

Product Overview

SXBP-2150+ is a wideband bandpass filter in a miniature shielded package covering 2050 to 2250 MHz. This is designed for asymmetric rejection applications such as super-heterodyne receivers. By having asymmetric band, faster roll-off at upper side band is achieved in a comparatively smaller package and lower pass band insertion loss. It has repeatable performance across lots and consistent performance across temperature.

Key Features

Feature	Advantages
Fast roll-off on the upper side band	Wide bandwidth filter with fast-roll off on the upper side band, which increases selectivity on the adjacent channel.
Good matching and low loss in pass band	This filter has good matching and low loss in the pass band
Small size, 0.44" X 0.74" X 0.27"	The surface mount package enables the SXBP-2150+ to be used in compact designs.
High power handling	This model uses high Q capacitors and high current handling inductors which is well suited for high power applications.



For detailed performance specs & shopping online see web site

P.O. Box 350166, Brooklyn, New York 11235-0003 (718) 934-4500 Fax (718) 332-4661 The Design Engineers Search Engine  Provides ACTUAL Data Instantly at minicircuits.com

Notes: 1. Performance and quality attributes and conditions not expressly stated in this specification sheet are intended to be excluded and do not form a part of this specification sheet. 2. Electrical specifications and performance data contained herein are based on Mini-Circuit's applicable established test performance criteria and measurement instructions. 3. The parts covered by this specification sheet are subject to Mini-Circuits standard limited warranty and terms and conditions (collectively, "Standard Terms"); Purchasers of this part are entitled to the rights and benefits contained therein. For a full statement of the Standard Terms and the exclusive rights and remedies thereunder, please visit Mini-Circuits' website at www.minicircuits.com/MCLStore/terms.jsp.

Surface Mount Bandpass Filter

SXBP-2150+

50Ω 2050 to 2250 MHz



CASE STYLE: HF1139
PRICE: \$17.95 ea. QTY (1-9)

Features

- Wide bandwidth
- Better rejection
- Miniature shielded package

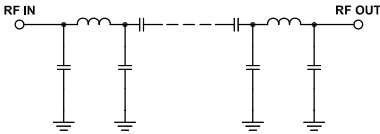
Electrical Specifications at 25°C

Parameter	F#	Frequency (MHz)	Min.	Typ.	Max.	Unit
Pass Band	Center Frequency	-	-	2150	-	MHz
	Insertion Loss	F1-F2	2050-2250	1.0	2.0	dB
	VSWR	F1-F2	2050-2250	1.3	2.3	:1
Stop Band, Lower	Insertion Loss	DC-F3	DC-950	20.0	30.0	dB
	VSWR	DC-F3	DC-950	20.0	20.0	:1
Stop Band, Upper	Insertion Loss	F4-F5	2675-5000	20.0	31.0	dB
	VSWR	F4-F5	2675-5000	-	20.0	:1

Applications

- Defense systems
- Fixed microwave
- IMT
- Auxiliary broadcasting
- Private and public land mobile

Functional Schematic



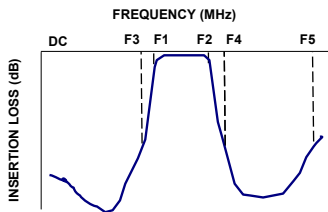
Maximum Ratings	
Operating Temperature	-40°C to 85°C
Storage Temperature	-55°C to 100°C
RF Power Input	6.3 W max.

Permanent damage may occur if any of these limits are exceeded.

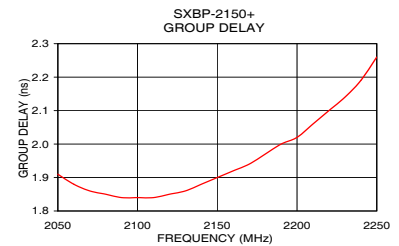
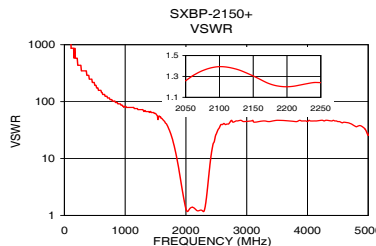
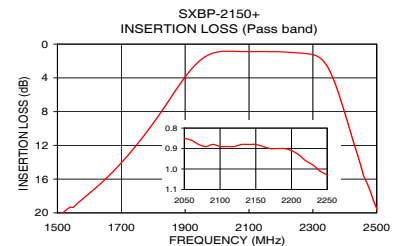
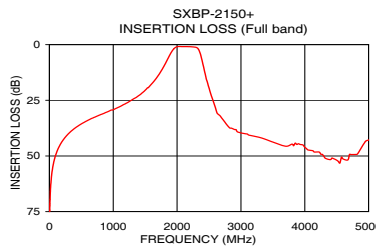
Typical Performance Data at 25°C

Frequency (MHz)	Insertion Loss (dB)	VSWR (:1)	Frequency (MHz)	Group Delay (nsec)
1	89.17	1737.18	2050	1.91
100	49.46	1737.18	2070	1.86
250	41.53	434.30	2080	1.85
850	30.91	96.51	2090	1.84
950	29.63	86.86	2100	1.84
1490	20.77	62.05	2110	1.84
1800	9.37	17.75	2120	1.85
1900	3.90	5.09	2130	1.86
1960	1.56	2.10	2140	1.88
2050	0.85	1.26	2150	1.90
2150	0.88	1.30	2160	1.92
2250	1.03	1.24	2170	1.94
2320	1.57	1.49	2180	1.97
2360	3.75	3.43	2190	2.00
2400	8.15	8.55	2200	2.02
2525	21.93	31.60	2210	2.06
2675	32.02	40.41	2220	2.10
3100	40.13	46.96	2230	2.14
4300	50.15	46.96	2240	2.19
5000	42.88	25.56	2250	2.26

Typical Frequency Response



+RoHS Compliant
The +Suffix identifies RoHS Compliance. See our web site for RoHS Compliance methodologies and qualifications



Mini-Circuits®
ISO 9001 ISO 14001 AS 9100 CERTIFIED
IFIRF MICROWAVE COMPONENTS

For detailed performance specs & shipping online see web site

P.O. Box 350166, Brooklyn, New York 11235-0003 (718) 934-4500 Fax (718) 332-4661 The Design Engineers Search Engine Provides ACTUAL Data Instantly at minicircuits.com

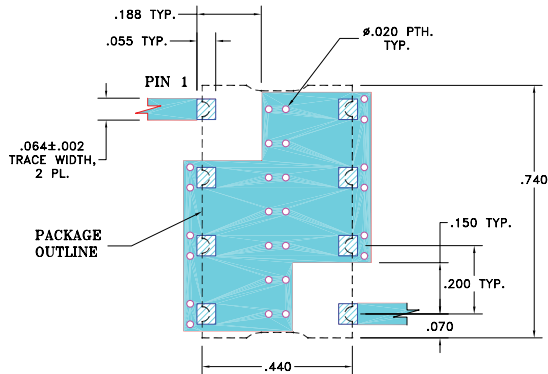
Notes: 1. Performance and quality attributes and conditions not expressly stated in this specification sheet are intended to be excluded and do not form a part of this specification sheet. 2. Electrical specifications and performance data contained herein are based on Mini-Circuit's applicable established test performance criteria and measurement instructions. 3. The parts covered by this specification sheet are subject to Mini-Circuits standard limited warranty and terms and conditions (collectively, "Standard Terms"); Purchasers of this part are entitled to the rights and benefits contained therein. For a full statement of the Standard Terms and the exclusive rights and remedies thereunder, please visit Mini-Circuits' website at www.minicircuits.com/MCLStore/terms.jsp.

REV OR
M139761
SXBP-2150+
EDU1703
URJ
130731
Page 2 of 3

Pad Connections

INPUT	1
OUTPUT	8
GROUND	2,3,4,5,6,7

Demo Board MCL P/N: TB-368+ Suggested PCB Layout (PL-230)

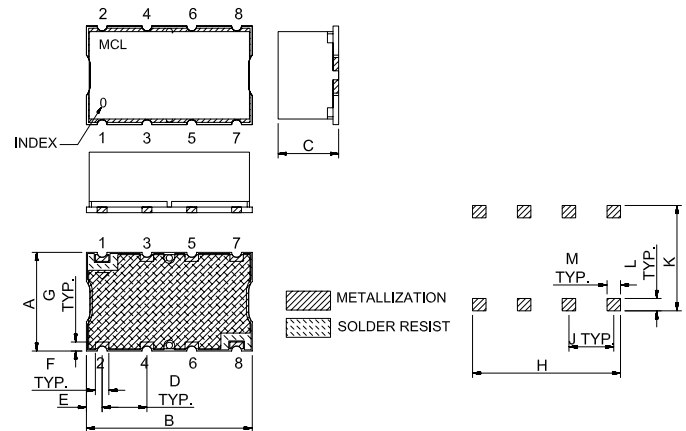


NOTE:

- TRACE WIDTH IS SHOWN FOR FR4 WITH DIELECTRIC THICKNESS: .025"±.002" COPPER: 1/2 OZ. EACH SIDE. FOR OTHER MATERIALS TRACE WIDTH MAY NEED TO BE MODIFIED.
- BOTTOM SIDE OF THE PCB IS CONTINUOUS GROUND PLANE.

- DENOTES PCB COPPER LAYOUT WITH SMOBC (SOLDER MASK OVER BARE COPPER)
- DENOTES COPPER LAND PATTERN FREE OF SOLDER MASK

Outline Drawing



Outline Dimensions (inch/mm)

A	B	C	D	E	F	G
.44	.74	.27	.200	.07	.060	.040
11.18	18.80	6.86	5.08	1.78	1.52	1.02
H	J	K	L	M	wt	
.660	.200	.470	.055	.060	grams	
16.76	5.08	11.94	1.40	1.52	3.0	