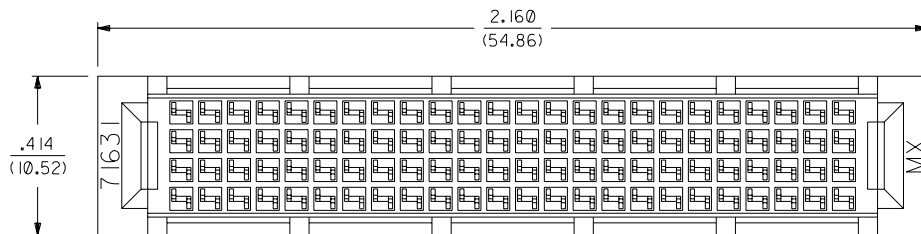


71631-1001



71631-1000

POLARIZED LEAD-IN

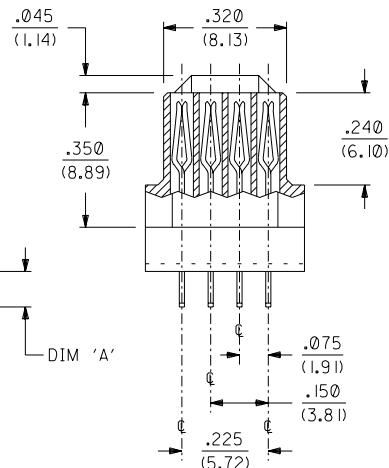
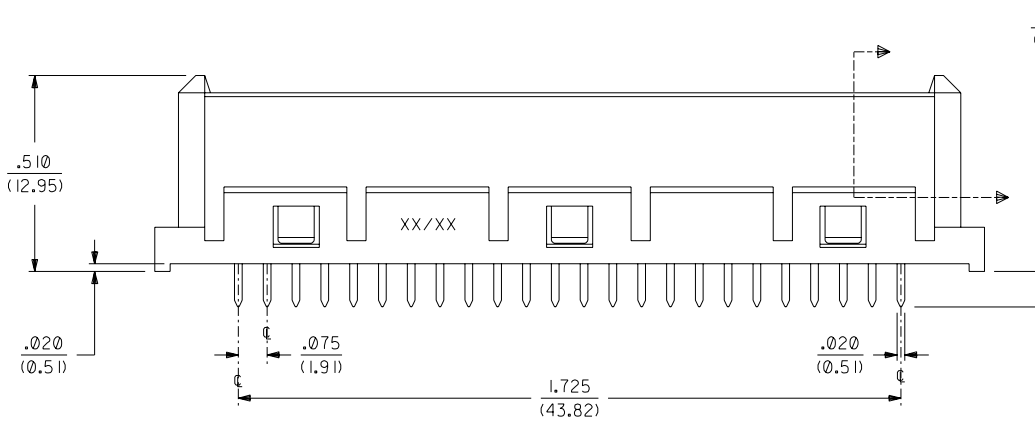
NOTES:

- CONNECTOR MATERIALS:
INSULATOR MATERIAL IS GLASS FILLED LCP (LIQUID CRYSTAL POLYMER), RATED U.L. 94V-0, COLOR IS BLACK.
TERMINALS ARE .013/(0.33) THICK BERYLLIUM COPPER;
PLATING IS .000030/(.00076) MINIMUM GOLD IN CONTACT AREA, AND .000100/(.00254) MINIMUM TIN ON P.C. TAILS, OVER NICKEL UNDERPLATE OVERALL.
- ALL UNTOLERANCED DIMENSIONS ARE SHOWN FOR REFERENCE ONLY.
- THIS CONNECTOR CONFORMS TO PRODUCT SPECIFICATION PS-71631.

NOTE FOR LEAD FREE CONVERSION:

THE PRIMARY SHIPPING CARTON WILL BE LABELED "COMPLIANT TO ROHS DIRECTIVE 2002/95/EC AND ELV ANNEX II OF DIRECTIVE 2000/53/EC". CARTONS WITHOUT THIS LABEL MAY CONTAIN PRODUCT WITH LEAD.

PART NUMBER	ENGINEERING NO.	DIM 'A'	DESCRIPTION
051-26-0041	71631-1000	.092 (2.34)	NON-POLARIZED
051-26-0042	71631-1001	.130 (3.30)	POLARIZED



71631			
E			LEADFREE ECN# UCP2004-1663 DMORGAN 04/04/12
D			RELEASED -1001 PER ECN. U8-0569 SCHMIDG. 97/09/04
C			ADDED -1001 PER ECN. U6-0110 10/31/95 DRS
B			REDRAWN & REVISED PER ECN. #U3-0564 05/11/93 GLT
A			INITIAL RELEASE PER ECN. #U2-0675 05/01/92 RAN
	2	C	
	1	E	
	MFG, SH, REV.		LTR. REVISIONS
			REVISE ONLY ON CAD SYSTEM

DIMENSIONS SHOWN (METRIC) INCH	
UNLESS OTHERWISE SPECIFIED TOLERANCES: ANGULAR ± 1/2°	
3 PLACE ±	INCH METRIC
2 PLACE ±	± ±
1 PLACE ±	± ±
DRAFT WHERE APPLICABLE MUST REMAIN WITHIN DIMENSIONS	
DRWG. BY: RAN	CHK'D. BY: CAB
APP'D. BY: CAB	SCALE: 4 : 1

FILE NAME: S71631X1.DGN	SHEET NO. 2 OF 2	DATE: 04/22/92
TITLE: ASSEMBLY, .075 PITCH, 96 CKT., VERTICAL BD-TO-BD LFH RECEPTACLE (SALES DRWG.)		
MOLEX INCORPORATED, LITSE, ILL. 60532		
SEE CHART		SDA-71631-100*
THIS DRAWING CONTAINS INFORMATION THAT IS PROPRIETARY TO MOLEX INC. AND SHOULD NOT BE USED WITHOUT WRITTEN PERMISSION.		DIV. SIZE: CPP C

