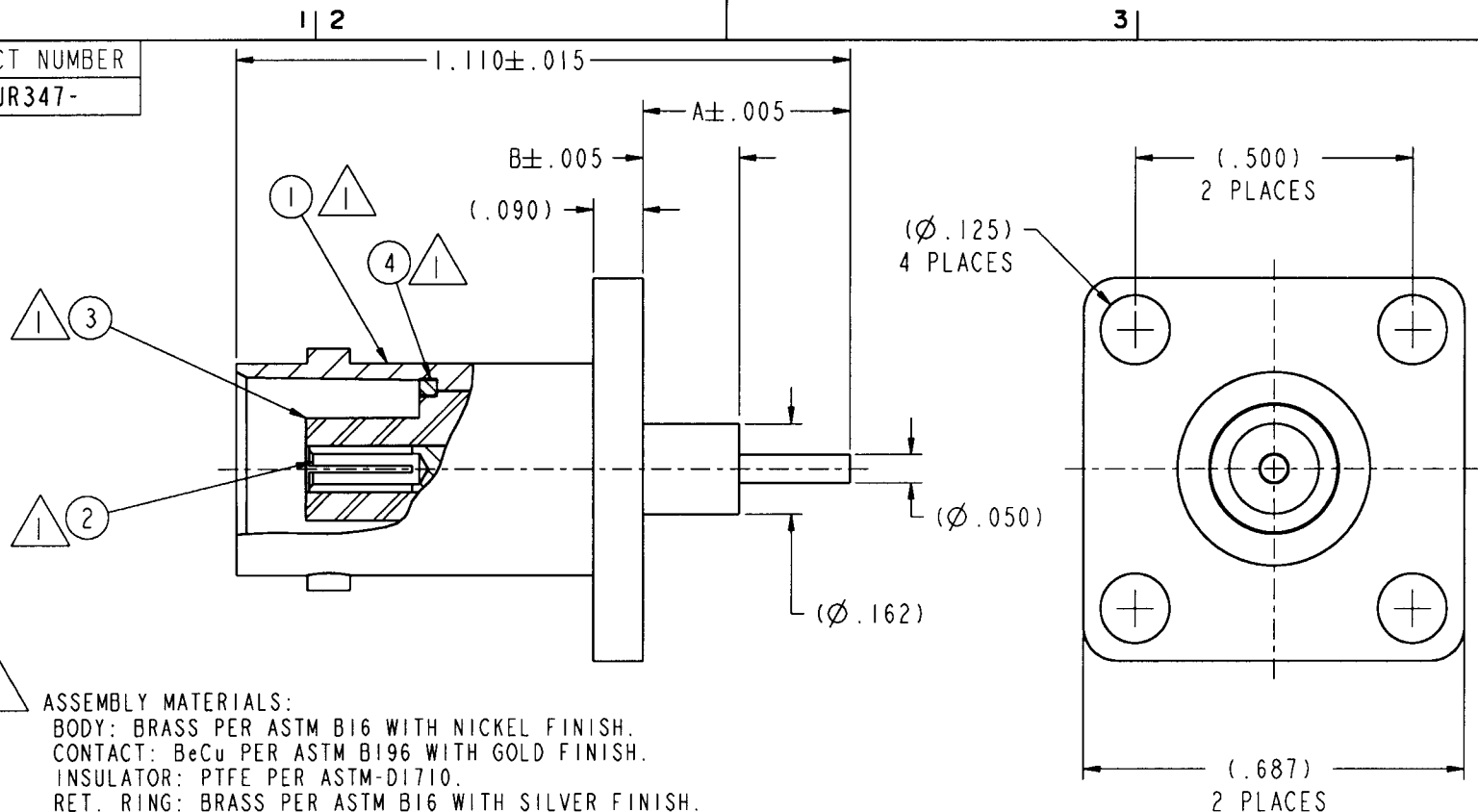


PRODUCT NUMBER
28JR347-



ASSEMBLY MATERIALS:

BODY: BRASS PER ASTM B16 WITH NICKEL FINISH.
CONTACT: BeCu PER ASTM B196 WITH GOLD FINISH.
INSULATOR: PTFE PER ASTM-D1710.
RET. RING: BRASS PER ASTM B16 WITH SILVER FINISH.

.110	.230	KNURLED RING	INSULATOR	CONTACT	BODY	28JR347-3
.175	.375	KNURLED RING	INSULATOR	CONTACT	BODY	28JR347-2
.175	.375	KNURLED RING	INSULATOR	CONTACT	BODY	28JR347-1
"B"	"A"	④ QTY=1	③ QTY=1	② QTY=1	① QTY=1	PART NO.

mat'l code				tolerances unless otherwise specified		CUSTOMER		FCI ELECTRONICS	
lir	ecn no.	dr	date	linear	.XX ± .01	COPY		www.fciconnect.com	
A	V92096	DKE	11/5/99	linear	.XXX ± .002	projection		title	
				angles	.XXX ± .0010	INCH		BNC FLANGE MOUNT	
				dr	0° ± 1°	scale		JACK RECEPTACLE	
				enr	D. EISENTRAUT 11/5/99	3:1		product family	
				chr	R. FISHER 11/5/99	A		RF	
				appd	R. FISHER 11/5/99	size		code	
sheet index	revision	A				28JR347		213	
	sheet	1				A		sheet	
								1 of 1	

Pro/E

cage code 22526

PDM: Rev:A

STATUS: Released

Printed: Oct 22, 2004