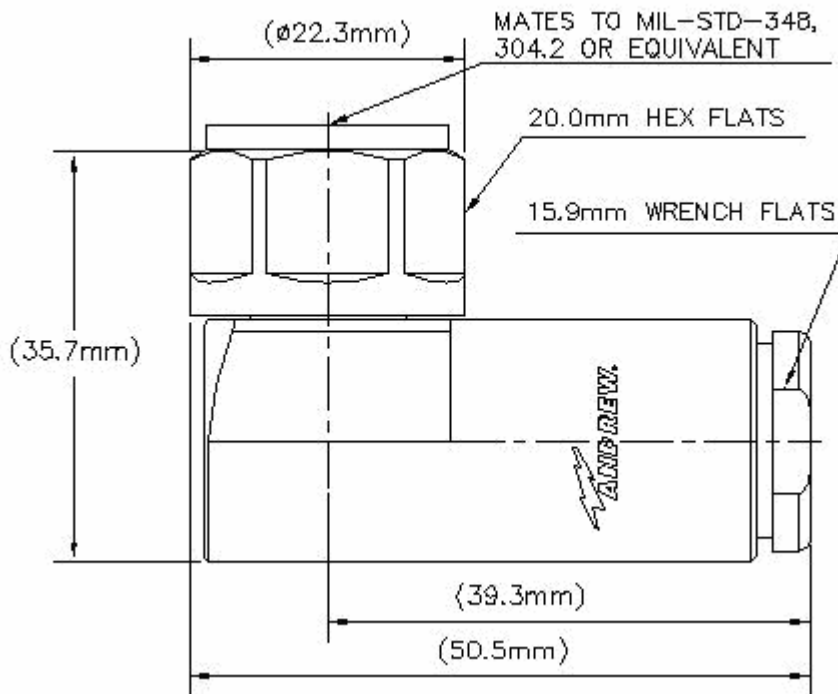


400PNR-C

Connector, N Male, Right angle, Captivated Inner Contact, Clamp Outer Contact attachment, for Cinta CNT-400/C2FCP Series Braided Cable



Interface type	N Male
Interface mates to	N Female

Electrical

Recommended maximum operating frequency, GHz	11.00	Connector Limited
Peak power, max, kW	10.00	Connector Limited
Average power, max, kW @ 900 MHz	0.58	Cable Limited
dc test maximum voltage	2,500.00	Cable Limited
RF operating voltage, max, VRMS	707.00	Connector Limited
Inner contact resistance, milliohms (Outer)	1.00 (0.25)	
Insulation resistance, min, Megaohms	5,000.00	Connector Limited
Shielding effectiveness, dB	90.00	
Connector impedance, Ohms	50.00	
Cable impedance, Ohms	50.00	
Insertion loss, max, dB	0.05 $\sqrt{\text{frequency(GHz)}}$	
Connector Return Loss, dB		

Start	Stop	Return Loss
0.05	- 3.00 GHz	28.00
3.00	- 6.00 GHz	18.00

Mechanical

Customer Support Center:

From North America: 1-800-255-1479
 International: +1-708-873-2307

www.andrew.com

This Specification Sheet is for reference only and is subject to change without notice.
 Copyright © 2007 Andrew Corporation
 10 January 2007

400PNR-C

Connector, N Male, Right angle, Captivated Inner Contact, Clamp Outer Contact attachment, for Cinta CNT-400/C2FCP Series Braided Cable

Inner attachment method	Captivated
Outer attachment method	Clamp
Connector weight, g	132.12
Pressurizable	No
Coupling nut retention force, N (lb)	445.00 (100.04)
Minimum coupling nut torque, N-m (lb-in)	0.70 (6.20)
Insertion force, N (lb)	100.00 (22.48)
Minimum connector retention tensile force, N (lb)	330.00 (74.19)
Minimum connector retention torque, N-m (lb-in)	0.56 (4.96)

Environmental

Moisture resistance test	IEC 529, IP68
Mechanical shock test	IEC 68, part 2-27
Corrosion test	IEC 68-2-11
Thermal shock test	MIL-STD-202F, Method 107G
Vibration test	IEC 68, Part 2-6
Operating temperature range, °C	-40.00°C - 85.00°C
Storage temperature range, °C	-65.00°C - 125.00°C
Immersion test, mated connectors	IEC 529:1989,IP68

Components

Body{Trimetal Plate}	Material: Brass
	Exterior finish: Trimetal Plate
Insulator	Material: PTFE
Hex Coupling Nut	Material: Brass
	Exterior finish: Trimetal Plate
Oring,0.039x0.472,sil,red	Material: Silicone Rubber
N Gasket	Material: Silicone Rubber
Interface {Silver Plate}	Material: Brass
	Exterior finish: Silver Plate
Inner Contact	Material: Brass
	Exterior finish: Gold Plate
Inner Contact {Gold Plate}	Material: Beryllium Copper
	Exterior finish: Gold Plate
Insulator	Material: PTFE
Bushing{Trimetal Plate}	Material: Brass
	Exterior finish: Trimetal Plate
Clamp {Trimetal Plate}	Material: Brass
	Exterior finish: Trimetal Plate
Gasket	Material: Silicone Rubber

Customer Support Center:

From North America: 1-800-255-1479
 International: +1-708-873-2307

www.andrew.com

This Specification Sheet is for reference only and is subject to change without notice.
 Copyright © 2007 Andrew Corporation
 10 January 2007

400PNR-C**Connector, N Male, Right angle, Captivated Inner Contact,
Clamp Outer Contact attachment, for Cinta CNT-400/C2FCP
Series Braided Cable**

Washer {Trimetal Plate}

Material: Brass

Exterior finish: Trimetal Plate

Clamping Nut {Trimetal Plate}

Material: Brass

Exterior finish: Trimetal Plate