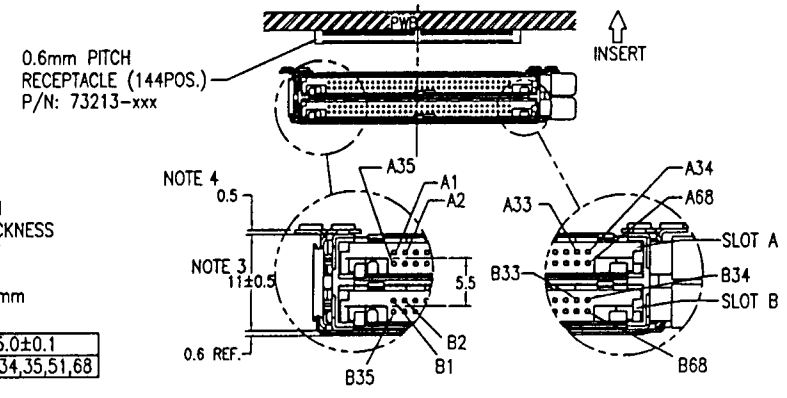
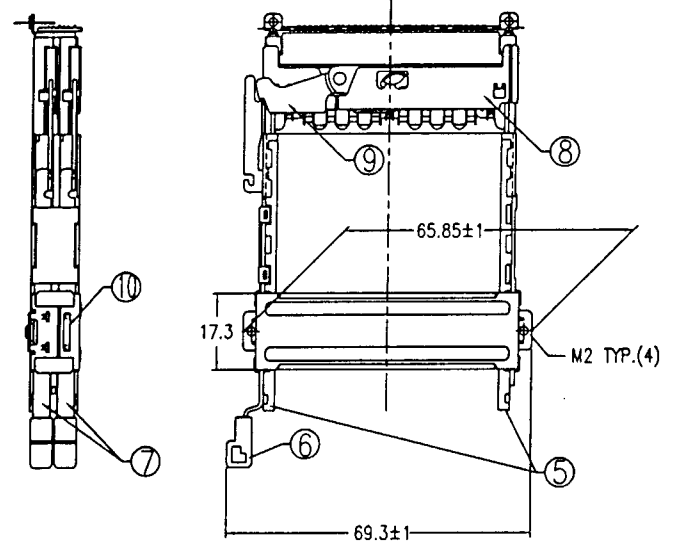
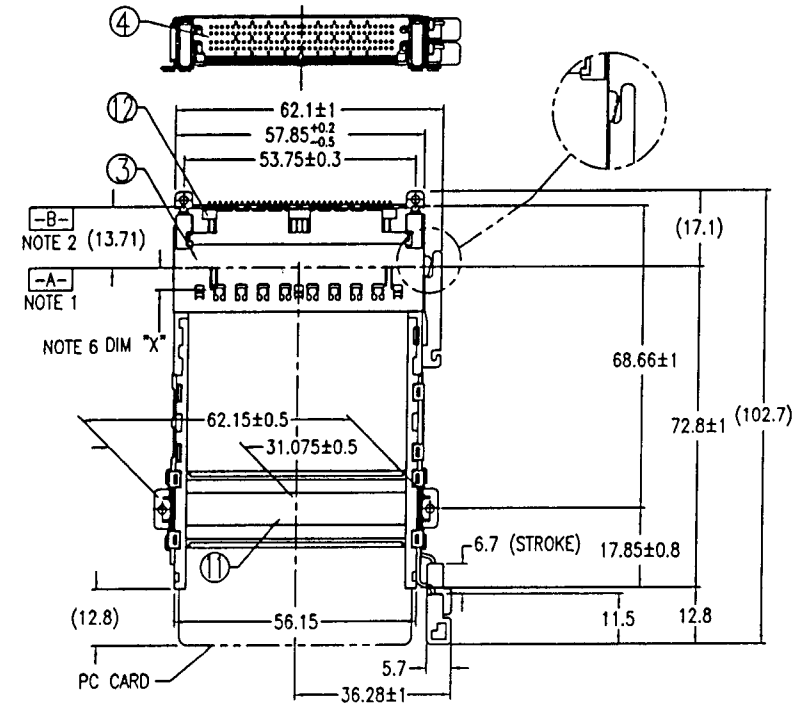
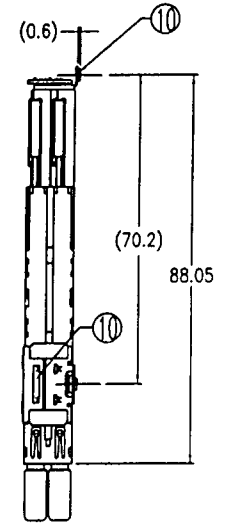


Tous droits strictement réservés. Reproduction ou communication à des tiers sans la permission écrite de BERG ELECTRONICS.
Droits de reproduction BERG ELECTRONICS by



All rights strictly reserved. Reproduction or use to third parties in any form without the written permission of BERG ELECTRONICS.
Copyright BERG ELECTRONICS by

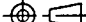
| | |
|-------------|--------------|
| PRODUCT NO. | BUTTON COLOR |
| 73832-05RRA | BLACK |



NOTE:
1. -A- : CARD EDGE POSITION
2. -B- : CENTER OF PWB THICKNESS
3. EJECTOR MECHANISM HEIGHT
4. STAND OFF HEIGHT
5. CARD EJECT TRAVEL : MIN. 7mm
6. DIM "X"
7. GENERAL TOLERANCE : ±0.3
8. SEE FIG. OF REF. DWG(TA-1115) FOR PIN ASSIGNMENT.

| | | |
|----------|---------|------------------|
| 4.25±0.1 | 3.5±0.1 | 5.0±0.1 |
| OTHERS | 36.67 | 1,17,34,35,51,68 |

| COMPONENT | MATERIAL | FINISH | QTY. |
|-------------------|---------------------------------|---|------|
| (1) HOUSING | FLAME RETARDANT RESIN (UL94V-0) | NONE | 2 |
| (2) PIN | PHOSPHOR BRONZE | UNDER : 0.5mm MIN. Ni CONTACT AREA : 0.1mm MIN. Au OVER 0.5mm MIN. Pd-Ni | 136 |
| (3) SHIELD | PHOSPHOR BRONZE | SOLDER TAIL : 2.5mm MIN. Sn-Pb UNDER : 1.27mm MIN. Ni (SHIELD 1,2) SELECTIVE : 0.1mm MIN. Au (SHIELD 1) | 2+2 |
| (4) PCB | FR4 | UNDER : 0.5mm MIN. Ni ALL OVER : 0.1mm MIN. Au | 1 |
| (5) GUIDE | STAINLESS STEEL | SELECTIVE UNDER : 0.5mm MIN. Ni SELECTIVE OVER : 0.1mm MIN. Au | 2 |
| (6) BUTTON | FLAME RETARDANT RESIN (UL94V-0) | NONE | 4 |
| (7) PUSH ROD | FLAME RETARDANT RESIN (UL94V-0) | NONE | 4 |
| (8) EJECT PLATE | STAINLESS STEEL | NONE | 2 |
| (9) LINK ARM | STAINLESS STEEL | NONE | 2 |
| (10) BRACKET | STAINLESS STEEL | NONE | 2 |
| (11) TOWER BAR | STAINLESS STEEL | NONE | 1 |
| (12) TAIL LOCATOR | FLAME RETARDANT RESIN (UL94V-0) | NONE | 1 |

| | | | | | | | | | | | | | | | | | | | | | |
|------------|----------|-----|----------|---|-------------|----------|-------------------------|---|--|-----------------|--|-------|--|--|--|--|--|--|--|--|--|
| mat'l code | | | | tolerance unless otherwise specified | | | | CUSTOMER COPY | | FCI ELECTRONICS | | | | | | | | | | | |
| rev. | ecn no. | dr | date | linear | ±0.3 | | | projection  | title CARDBUS II FINAL ASSY (BELOW, 0.5 STAND-OFF) | | | | | | | | | | | | |
| A | J90113 | M.K | 4/5/99 | | | | | | | | | | | | | | | | | | |
| B | T00279 | WL | 09/11/00 | | angles | | | | unit mm/inch | | | | | | | | | | | | |
| C | T00290 | WL | 09/27/00 | | | | | | | | | scale | | | | | | | | | |
| | | | | dr | WENDY CHEN | 09/27/00 | product family : PCMCIA | code TWN sheet 1 of 4 | | | | | | | | | | | | | |
| | | | | enrg | LEIF SHEN | 09/27/00 | size | | | dwg no. | | | | | | | | | | | |
| | | | | chr | JOSEPH HSIA | 09/27/00 | A3 | | | 73832 | | | | | | | | | | | |
| | | | | oppd | JOSEPH HSIA | 09/27/00 | | | | | | | | | | | | | | | |
| sheet | revision | C | C | C | C | | | | | | | | | | | | | | | | |
| index | sheet | 1 | 2 | 3 | 4 | | | | | | | | | | | | | | | | |

Printed: May 31, 2004

Tous droits strictement réservés. Reproduction ou communication à des tiers sans autorisation écrite de BERG ELECTRONICS.

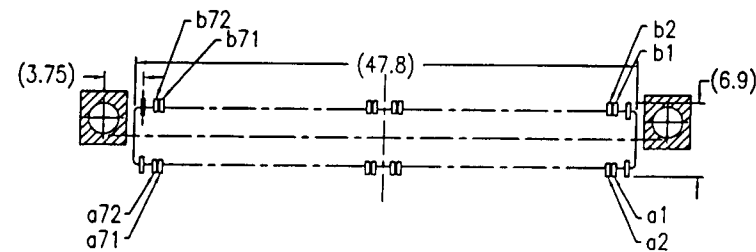
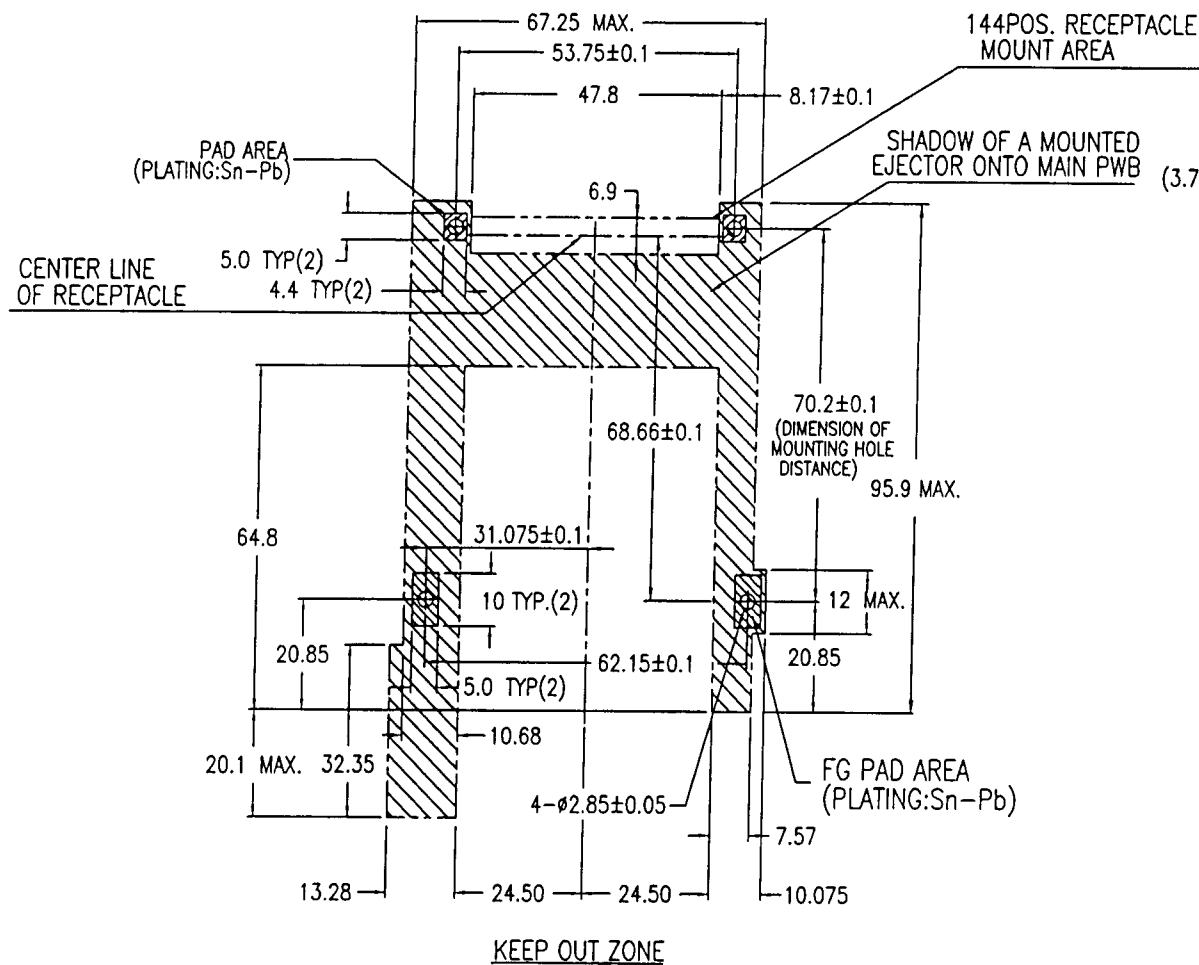
All rights strictly reserved. Reproduction or communication to third parties in any form without written authority from the proprietor.

Property of BERG ELECTRONICS.

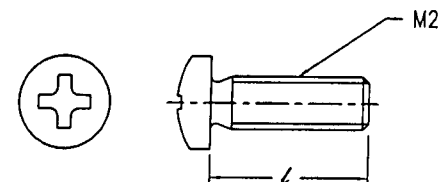
Copyright BERG ELECTRONICS by

PRODUCT NO.

73832-05RRA



RECOMMENDED RECEPTACLE PAD LAYOUT



| STAND OFF | l | |
|-----------|------------------|------------------|
| 0.5 mm | P.W.B. THK 1.2mm | P.W.B. THK 1.6mm |
| | 3mm | |

RECOMMENDED M2 SCREW LENGTH

NOTE

1. GENERAL TOLERANCE : ± 0.3
2. RECOMMENDED TIGHTING TORQUE : 0.196 N.m [2.0 kgf.cm]
MAX. : 0.245 N.m [2.5 kgf.cm]

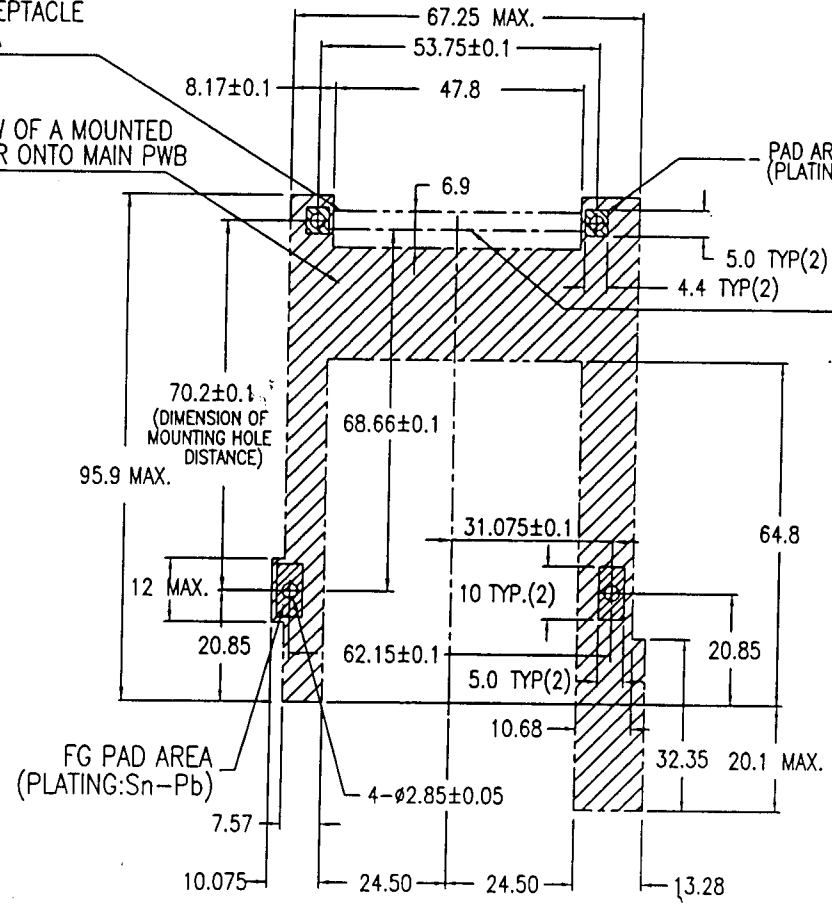
| mat'l code | | | | tolerance unless otherwise specified | | CUSTOMER COPY | | ELECTRONICS | |
|------------|----------|-----|------|--------------------------------------|----------|---------------|------------|--|-------|
| rev. | ecn | no. | dr | date | linear | ±0.3 | projection | title | |
| C | | | | | angles | ±2° | | CARDBUS II FINAL ASS'Y (BELOW , 0.5 STAND-OFF) | |
| | | | dr | WENDY CHEN | 09/27/00 | unit | mm/inch | product family : PCMCIA | code |
| | | | enrg | LEIF SHEN | 09/27/00 | size | dwg no. | 73832 | TWN |
| | | | chr | JOSEPH HSWA | 09/27/00 | scale | | | sheet |
| | | | appd | JOSEPH HSWA | 09/27/00 | | | | 3 of |
| sheet | revision | | | | | | | | |
| index | sheet | | | | | | | | |

Tous droits strictement réservés. Reproduction ou communication à des tiers sans autorisation écrite du propriétaire.
All rights strictly reserved. Reproduction or use in third parties in any form without written authority from the proprietor.
Copyright © BERG ELECTRONICS

PRODUCT NO.
73832-05LLA

144POS. RECEPTACLE
MOUNT AREA

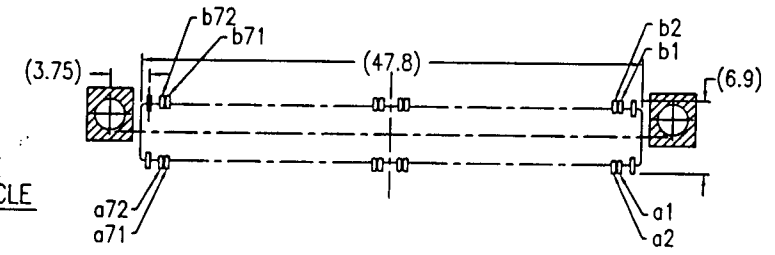
SHADOW OF A MOUNTED
EJECTOR ONTO MAIN PWB



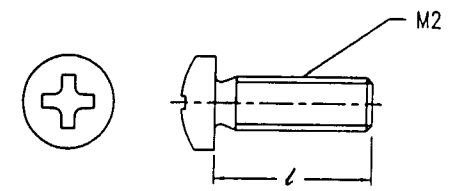
KEEP OUT ZONE

NOTE

- 1. GENERAL TOLERANCE : ± 0.3
- 2. RECOMMENDED TIGHTING TORQUE : 0.196 N.m [2.0 kgf.cm]
MAX. : 0.245 N.m [2.5 kgf.cm]



RECOMMENDED RECEPTACLE PAD LAYOUT



| STAND OFF | L | |
|-----------|------------------|------------------|
| | P.W.B. THK 1.2mm | P.W.B. THK 1.6mm |
| 0.5 mm | 3mm | |

RECOMMENDED M2 SCREW LENGTH

| mat'l code | | | | tolerance unless otherwise specified | | CUSTOMER COPY | | FCI ELECTRONICS | |
|------------|----------|------|----------------------|--------------------------------------|---------------|---------------|---|-------------------------|-------|
| rev. | ecn no. | dr | date | linear | ± 0.3 | projection | title | product family : PCMCIA | code |
| C | | | | angles | $\pm 2^\circ$ | | CARBUS II FINAL ASS'Y (BELOW , 0.5 STAND-OFF) | size | TWN |
| | | dr | WENDY CHEN 09/27/00 | | | unit | | dwg no. | sheet |
| | | enr | LIEF SHEN 09/27/00 | | | mm/inch | | 73832 | 4 of |
| | | chr | JOSEPH HSIA 09/27/00 | | | scale | | | |
| | | appd | JOSEPH HSIA 09/27/00 | | | | | | |
| sheet | revision | | | | | | | | |
| index | sheet | | | | | | | | |