

## FLEXPAC® LOCKING HEADER, SINGLE ROW RIGHT ANGLE CONTACTS 2MM (.079") CENTER SPACING



### PHYSICAL PROPERTIES

**INSULATION MATERIAL:** Glass reinforced thermoplastic rated 94V-0

**COLOR:** Black

**CONTACT MATERIAL:** Copper alloy

**CONTACT PLATING:** .000150 tin/lead alloy over .000050 nickel all over

### ELECTRICAL PROPERTIES

**CURRENT RATING:** 2.5 amps

**INSULATION RESISTANCE:** >1 x 10<sup>9</sup> Ohms @ 500 VDC

**DWV:** >500 VRMS at sea level

### ENVIRONMENTAL PROPERTIES

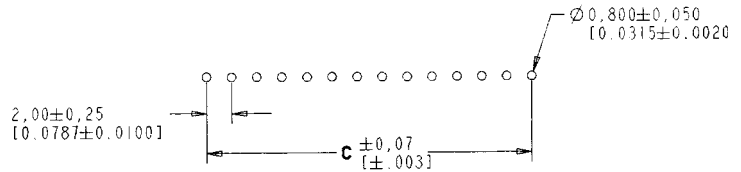
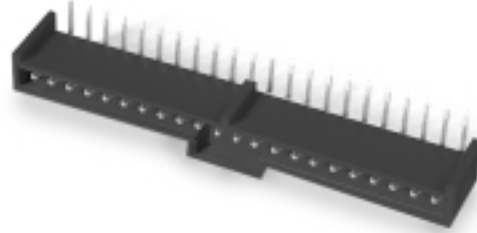
**TEMPERATURE RATING:**

Processing: 2 min. @ 250° C max.

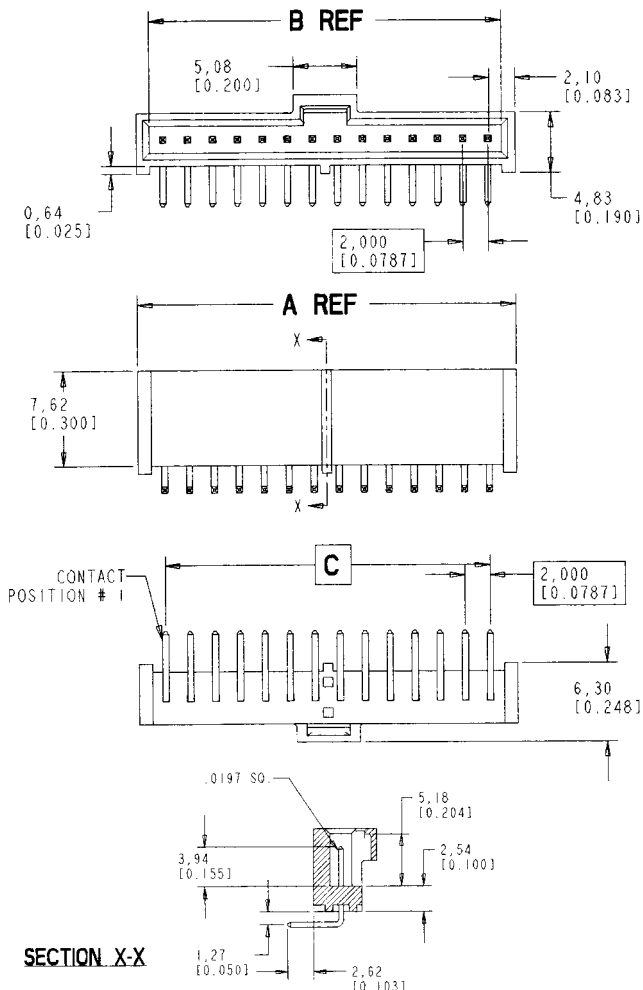
Operating: -55° to 105° C

### MATING CONNECTOR

See page 185



### RECOMMENDED PC BOARD LAYOUT



### Ordering Information

| GOLD CONTACT PLATING | TIN CONTACT PLATING | NO. OF POS. | DIMENSIONS    |               |               |
|----------------------|---------------------|-------------|---------------|---------------|---------------|
|                      |                     |             | A             | B             | C             |
| F2H-04SRG            | F2H-04SRT           | 4           | 10.31 (.406)  | 8.19 (.322)   | 6.00 (.236)   |
| F2H-05SRG            | F2H-05SRT           | 5           | 12.32 (.485)  | 10.19 (.401)  | 8.00 (.315)   |
| F2H-06SRG            | F2H-06SRT           | 6           | 14.33 (.564)  | 12.19 (.480)  | 10.00 (.394)  |
| F2H-07SRG            | F2H-07SRT           | 7           | 16.31 (.642)  | 14.19 (.558)  | 12.00 (.472)  |
| F2H-08SRG            | F2H-08SRT           | 8           | 18.31 (.721)  | 16.19 (.637)  | 14.00 (.551)  |
| F2H-09SRG            | F2H-09SRT           | 9           | 20.32 (.800)  | 18.19 (.716)  | 16.00 (.630)  |
| F2H-10SRG            | F2H-10SRT           | 10          | 22.30 (.878)  | 20.19 (.795)  | 18.00 (.709)  |
| F2H-11SRG            | F2H-11SRT           | 11          | 24.30 (.957)  | 22.19 (.873)  | 20.00 (.787)  |
| F2H-12SRG            | F2H-12SRT           | 12          | 26.31 (1.036) | 24.19 (.952)  | 22.00 (.866)  |
| F2H-13SRG            | F2H-13SRT           | 13          | 28.32 (1.115) | 26.19 (1.031) | 24.00 (.945)  |
| F2H-14SRG            | F2H-14SRT           | 14          | 30.33 (1.194) | 28.19 (1.110) | 26.00 (1.024) |
| F2H-15SRG            | F2H-15SRT           | 15          | 32.33 (1.273) | 30.19 (1.189) | 28.00 (1.102) |
| F2H-16SRG            | F2H-16SRT           | 16          | 34.34 (1.352) | 32.19 (1.268) | 30.00 (1.181) |
| F2H-17SRG            | F2H-17SRT           | 17          | 36.32 (1.430) | 34.19 (1.346) | 32.00 (1.260) |
| F2H-18SRG            | F2H-18SRT           | 18          | 38.33 (1.509) | 36.19 (1.425) | 34.00 (1.339) |
| F2H-19SRG            | F2H-19SRT           | 19          | 40.34 (1.588) | 38.19 (1.504) | 36.00 (1.417) |
| F2H-20SRG            | F2H-20SRT           | 20          | 42.32 (1.666) | 40.19 (1.582) | 38.00 (1.496) |
| F2H-21SRG            | F2H-21SRT           | 21          | 44.32 (1.745) | 42.19 (1.661) | 40.00 (1.575) |
| F2H-22SRG            | F2H-22SRT           | 22          | 46.33 (1.824) | 44.19 (1.740) | 42.00 (1.654) |
| F2H-23SRG            | F2H-23SRT           | 23          | 48.31 (1.902) | 46.19 (1.818) | 44.00 (1.732) |
| F2H-24SRG            | F2H-24SRT           | 24          | 50.32 (1.981) | 48.19 (1.897) | 46.00 (1.811) |
| F2H-25SRG            | F2H-25SRT           | 25          | 52.30 (2.059) | 50.19 (1.975) | 48.00 (1.890) |
| F2H-26SRG            | F2H-26SRT           | 26          | 54.33 (2.139) | 52.19 (2.055) | 50.00 (1.969) |
| F2H-27SRG            | F2H-27SRT           | 27          | 56.31 (2.217) | 54.19 (2.133) | 52.00 (2.047) |
| F2H-28SRG            | F2H-28SRT           | 28          | 58.32 (2.296) | 56.19 (2.212) | 54.00 (2.126) |
| F2H-29SRG            | F2H-29SRT           | 29          | 60.33 (2.375) | 58.19 (2.291) | 56.00 (2.205) |
| F2H-30SRG            | F2H-30SRT           | 30          | 62.31 (2.453) | 60.19 (2.369) | 58.00 (2.283) |
| F2H-31SRG            | F2H-31SRT           | 31          | 64.31 (2.532) | 62.19 (2.448) | 60.00 (2.362) |
| F2H-32SRG            | F2H-32SRT           | 32          | 66.32 (2.611) | 64.19 (2.527) | 62.00 (2.441) |