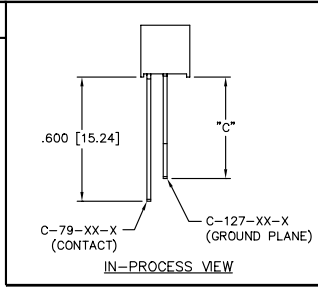


REVISION P



UNLESS OTHERWISE NOTED
 DIMENSIONS ARE IN INCHES TOLERANCES ARE:
 ONE PLACE DECIMALS ±.1[2.5] THREE PLACE DECIMALS ±.005[.127] ANGLES ± 2°
 TWO PLACE DECIMALS ±.01[.25] FOUR PLACE DECIMALS ±.0020[.051]

TITLE: .0197 SQ 2mm QUIET SOCKET ASSEMBLY

DWG NO: QST-1XX-XX-X-X SHEET 1 OF 1

TABLE 2

| LEAD STYLE | "A" | "B" | "C" | CONTACT | GROUND PLANE |
|------------|--------------|-------------|--------------|-----------|--------------|
| -01 | .638 [16.21] | .212 [5.38] | .600 [15.24] | C-79-02-X | C-127-01-X |
| -02 | .500 [12.70] | .115 [2.92] | .365 [9.27] | C-79-02-X | C-127-02-X |
| -03 | .650 [16.51] | .090 [2.29] | .490 [12.45] | C-79-02-X | C-127-03-X |
| -04 | .760 [19.30] | .090 [2.29] | .600 [15.24] | C-79-02-X | C-127-04-X |

QST-1XX-XX-X-X

No OF POSITIONS
 -10 THRU -50 (PER ROW)

LEAD STYLE SPECIFICATION
 -01: .638 STACK
 -02: .500 STACK
 -03: .650 STACK
 -04: .760 STACK

ROW SPECIFICATION
 -T: TRIPLE (USE SQT-50-T & TMMH-50-T)(SEE NOTE 5)
 -S: FIVE (USE SQT-50-S & TMMH-50-S)(SEE NOTE 5)

PLATING SPECIFICATION
 -F: FLASH SELECTIVE GOLD (USE C-79-XX-F & C-127-XX-F)
 -L: LIGHT SELECTIVE GOLD (USE C-79-XX-L & C-127-XX-L)
 -G: GOLD (USE C-79-XX-G & C-127-XX-G)
 -S: SELECTIVE GOLD (USE C-79-XX-S & C-127-XX-S)
 -M: MEDIUM SELECTIVE GOLD (USE C-79-XX-M & C-127-XX-M)

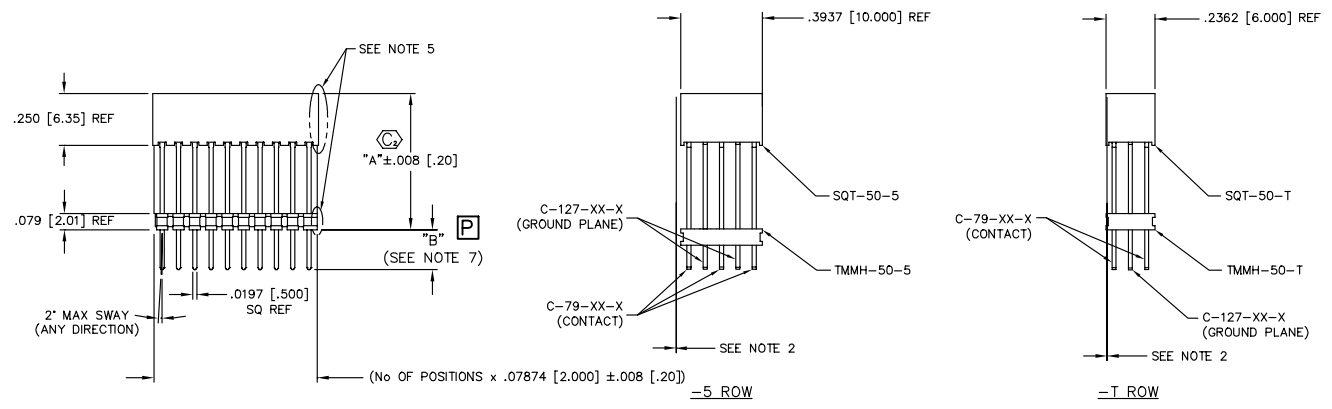
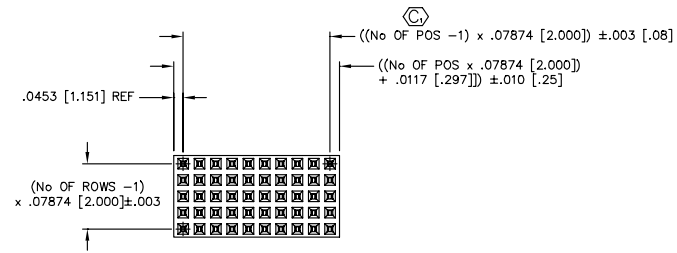
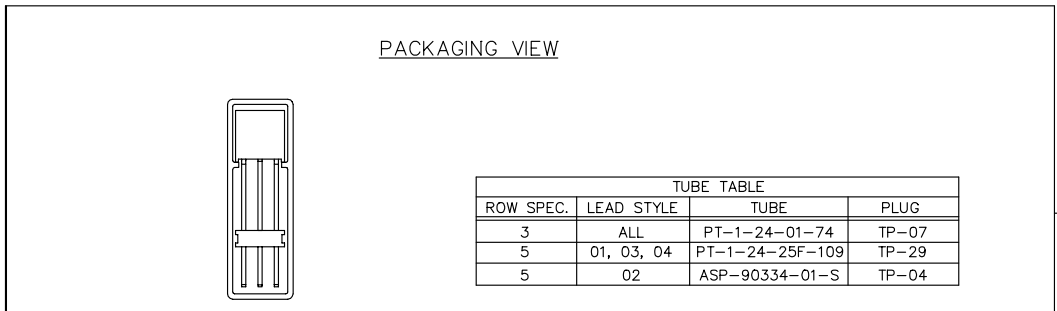


FIG. 1



QST-1XX-XX-X-T-XX
 PT-1-24-01-74
 USE 2 TP-07

- NOTE:
1. TOOLING TO BE DESIGNED TO PRODUCE UP TO 61 POSITIONS.
 2. TMMH BODY NOT TO BE MORE THAN ±.005 [.13] FROM PLANE SET BY SQT BODY.
 3. (C) REPRESENTS A CRITICAL DIMENSION.
 4. TAILS TO BE SHEARED TO ACHIEVE DIMENSION SHOWN (LEAD STYLE -02 & -03).
 5. MAX CUT FLASH TO BE .015 [.38].
 6. MAX BURR .005 [.13].
 7. MAX HEIGHT VARIATION BETWEEN ROWS: .010 [.25].

PROPRIETARY NOTE
 THIS DOCUMENT CONTAINS INFORMATION CONFIDENTIAL AND PROPRIETARY TO SAMTEC INC. AND SHALL NOT BE REPRODUCED OR TRANSFERRED TO OTHER DOCUMENTS OR DISCLOSED TO OTHERS OR USED FOR ANY PURPOSE OTHER THAN THAT FOR WHICH IT WAS OBTAINED WITHOUT THE EXPRESSED WRITTEN CONSENT OF SAMTEC INC.

MATERIAL:
 BODY: LIQUID CRYSTAL POLYMER
 COLOR: BLACK
 CONTACT: PHOSPHOR BRONZE



EXISPROD\ASSEMBLY\2MM QST-ASM
 520 PARK EAST BLVD. NEW ALBANY, INDIANA 47150
 PHONE (812) 944-6733 P.O. BOX 1147
 CODE 55322

MADE BY: PURVIS 09/22/98

QST-1XX-XX-X-X SHEET 1 OF 1