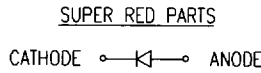
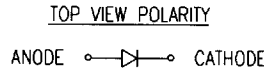
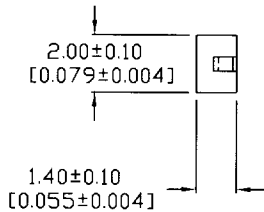
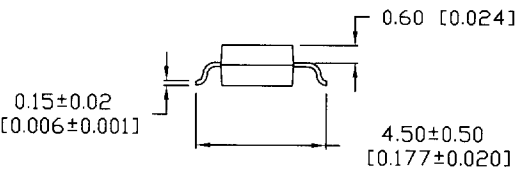
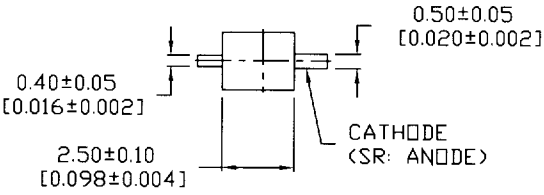
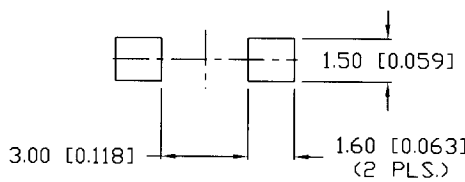


SSL-LXA1008XC-TR11

• Transfer Molded • Gull Wing Axial Leads



RECOMMENDED SOLDER PAD LAYOUT



Features/Options

- Epoxy Lead Frame, Molded Axial Package
- Lead Frame Soldering Reliability
- State-of-the-Art LED Die
- Built-In Round or Flat Lenses
- Trimmed and Formed Leads

Applications/Uses

- Keyboard/Keypad Illumination
- Circuit Fault Indicators
- Position Indicators
- Display or Character Backlighting
- Control Board Indicators
- Medical Diagnostic Instruments

SSL-LXA1008 Package Style - Super Bright

• Transfer Molded • Gull Wing Axial Leads

Lumex Part Number	LED Die Composition	Emitted Color	Peak Wavelength	Lens Color	Axial Intensity $I_f = 20\text{mA}$	V_f Typ @ $I_f = 20\text{mA}$	V_f Max @ $I_f = 20\text{mA}$	View Angle	Reflow Profile p.69	Reel Size	Tape Spec p.69
SSL-LXA1008SIC-TR11	AllnGaP	Super Intensity Red	636	Clear	150	2.0	2.6	140 degrees	Fig 1	1500	Fig B
SSL-LXA1008SOC-TR11	AllnGaP	Super Orange	610	Clear	250	2.0	2.6	140 degrees	Fig 1	1500	Fig B
SSL-LXA1008SRC-TR11	GaAlAs	Super Red	660	Clear	70	1.8	2.3	140 degrees	Fig 1	1500	Fig B
SSL-LXA1008SUGC-TR11	AllnGaP	Super Ultra Green	574	Clear	50	2.2	2.6	140 degrees	Fig 1	1500	Fig B
SSL-LXA1008SYC-TR11	AllnGaP	Super Yellow	590	Clear	70	2.0	2.6	140 degrees	Fig 1	1500	Fig B

SSL-LXA1008 Package Style - Ultra Bright

• Transfer Molded • Gull Wing Axial Leads

Lumex Part Number	LED Die Composition	Emitted Color	Peak Wavelength	Lens Color	Axial Intensity $I_f = 20\text{mA}$	V_f Typ @ $I_f = 20\text{mA}$	V_f Max @ $I_f = 20\text{mA}$	View Angle	Reflow Profile p.69	Reel Size	Tape Spec p.69
SSL-LXA1008USBC-TR11	InGaN/SiC	Ultra Super Blue	470	Clear	45	3.5	4.2	140 degrees	Fig 1	1500	Fig B