

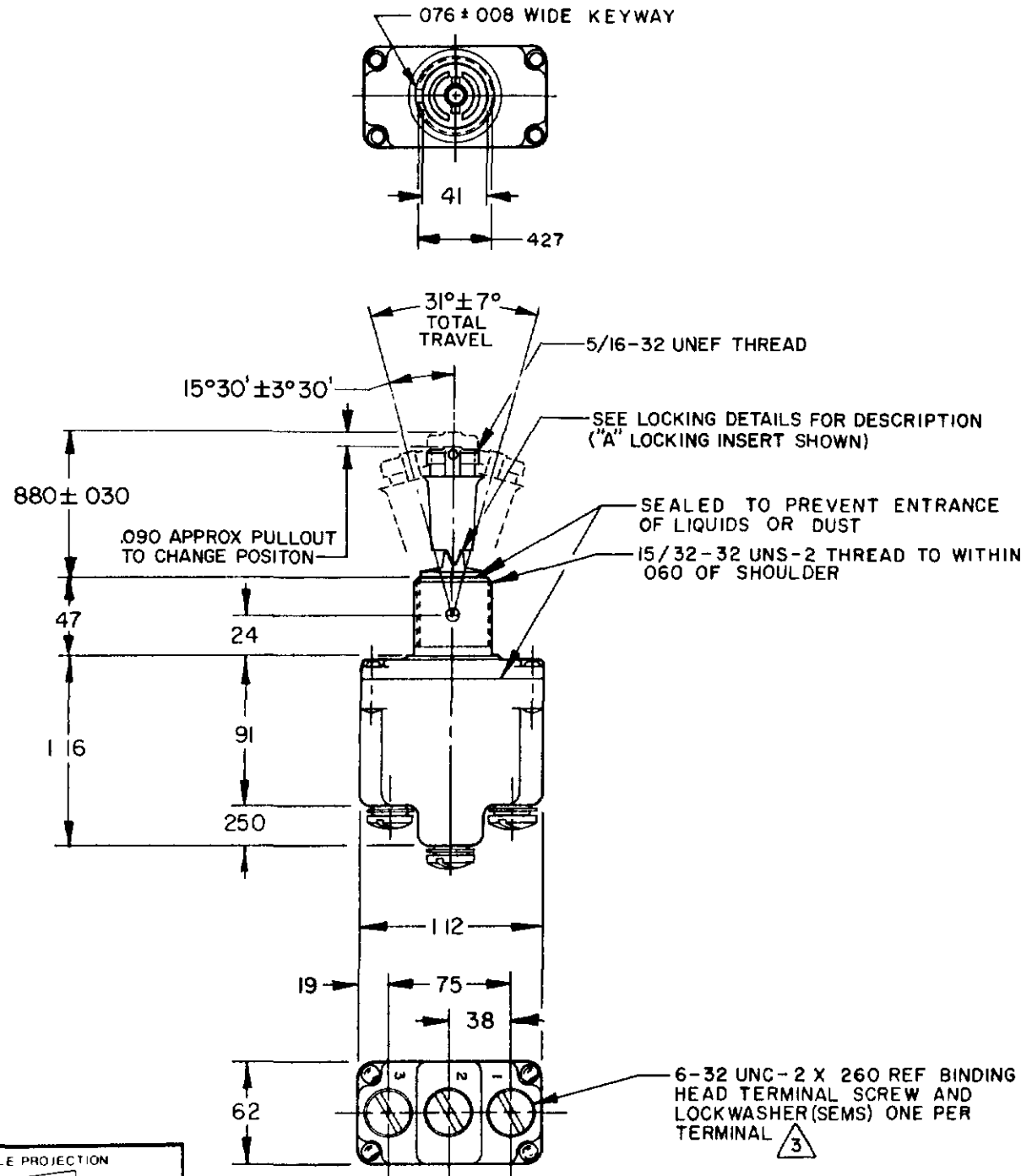
# MICRO SWITCH

FREEMONT ILLINOIS U S A  
A DIVISION OF HONEYWELL  
FED. MFG. CODE 91929

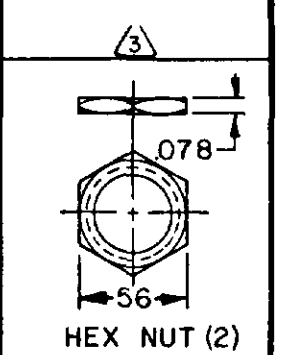
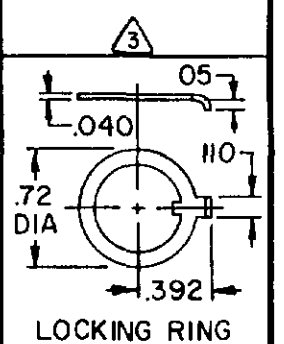
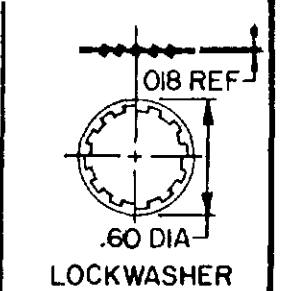
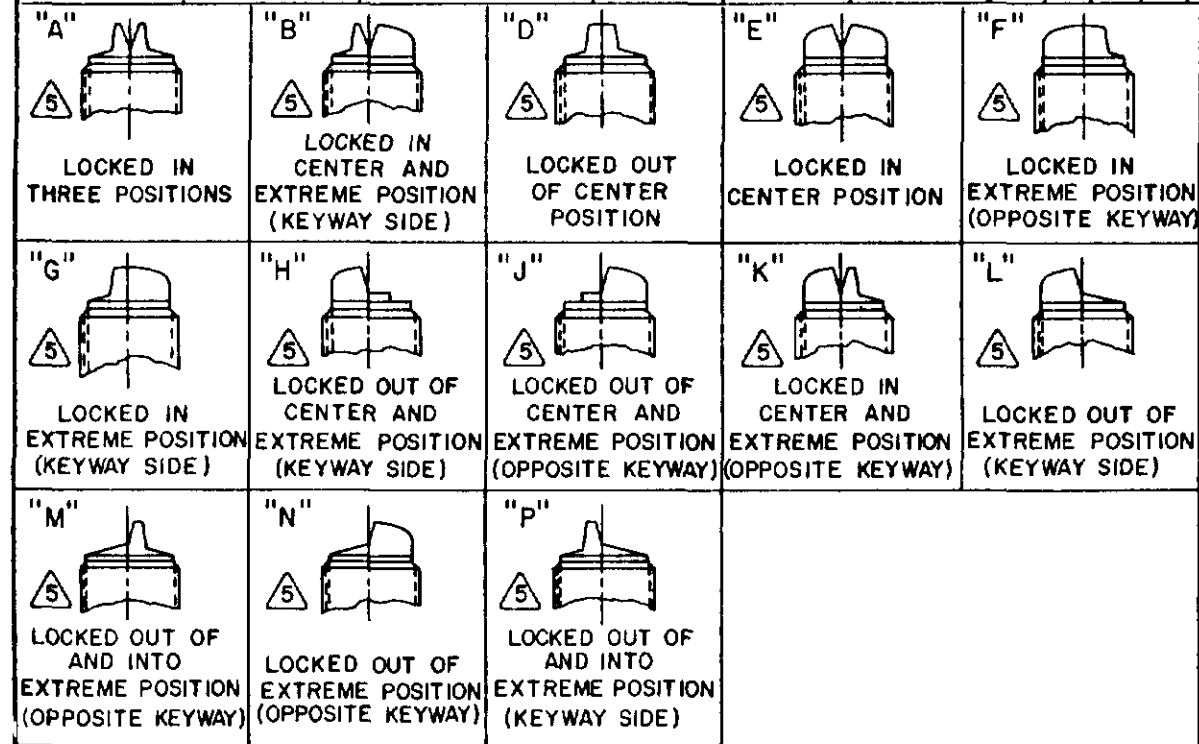
## SWITCH - TOGGLE

CATALOG LISTING  
**1TL149 SERIES**  
CHART 1

THIS DRAWING COVERS A PROPRIETARY ITEM AND IS THE PROPERTY OF MICRO SWITCH, A DIVISION OF HONEYWELL. THIS DRAWING IS NOT TO BE COPIED OR USED WITHOUT THE APPROVAL OF MICRO SWITCH



CATALOG LISTING	AVAILABLE LOCKING COMBINATIONS FOR CONFIGURATION SEE LETTERED DETAILS	CIRCUIT MADE WITH TOGGLE LEVER IN			MILITARY RATING (AMPS)								
		KEYWAY SIDE (1-2)	CENTER (1-2)	OPPOSITE KEYWAY (2-3)	RESISTIVE LOAD		LAMP LOAD		INDUCTIVE LOAD				
					DC VOLTS	AC VOLTS	28 VDC	125 VAC	28 VDC	125 VAC			
ITL149-1	ABDEFGHJKLMNP	ON	OFF	ON									
ITL149-2	D,F,G	OFF	NONE	ON									
ITL149-3	D,F,G	ON	NONE	ON	20	75	5	15	6	5	3	15	10
ITL149-2I	E,F,K,M	NONE	OFF	ON	(REFER TO L191 FOR UL RATING)								
ITL149-3I	E,F,K,M	NONE	ON	ON									
ITL149-4	F	MOM OFF	NONE	ON									
ITL149-5	E,F,K,L,M,N	MOM ON	OFF	ON									
ITL149-6	F	MOM ON	NONE	OFF									
ITL149-7	E,L,N	MOM ON	OFF	MOM ON	15	75	5	15	6	4	2	10	7
ITL149-8	F	MOM ON	NONE	ON	(REFER TO L192 FOR UL RATING)								
ITL149-5I	E	NONE	ON	MOM ON									
ITL149-6I	E	MOM ON	OFF	NONE									



- NOTES:
- SWITCHES ARE CAPABLE OF WITHSTANDING A TEMPERATURE OF 160°F CONTINUOUSLY AT FULL RATED LOAD
  - CIRCUIT DESIGNATION AND MICRO SWITCH CATALOG LISTING MARKED ON SIDE OF SWITCH
  - FURNISHED UNASSEMBLED
  - FOR TERMINAL COVER, SEE MICRO SWITCH CATALOG LISTING 5PA7
  - KEYWAY SHOWN ON LEFT SIDE
  - SUFFIX LETTER MUST BE ADDED FOR DESIRED TYPE OF TOGGLE LOCKING. SEE CHART FOR AVAILABLE LOCKING COMBINATIONS
  - APPLIES ONLY TO "ON" AND "MOMENTARY ON" POSITIONS

CATALOG LISTING  
**1TL149 SERIES CHART 1**  
PAGE 1 OF 1

ISSUE  
**M**  
4

REVISIONS

A	OBS	CO35421
B	KPK	17 DEC 76
C	RE-INST	CO78465
D	DTL	10 JUN 94
E	CO-	94429
F	C.S.L	24 NOV 99

CHECK

CHECK

CHECK

CHECK

CHECK

CHECK

CHECK

CHECK

1TL149 SERIES

REPLACES

NO CO-33624

CHECK

CHECK

CHECK

CHECK

CHECK

CHECK

CHECK

CHECK

CHECK

CHECK

CHECK

CHECK

CHECK

CHECK

CHECK

CHECK

CHECK

CHECK

CHECK

THIRD ANGLE PROJECTION

SCALE FULL

DO NOT SCALE PRINT

TOLERANCES

APPLY TO DESIGN UNITS CONVERSIONS ARE ONLY FOR REFERENCE UNLESS NOTED TOLERANCES ARE ±

DIM	TOL	DIM	TOL
mm	mm/in	in	mm/in
NO PLACES	X	1/64	X X
ONE PLACE	X X	0.010	X X X
TWO PLACES	X X X	0.001	X X X X
THREE PLACES	X X X X	0.0005	X X X X X
ANGLES			

DESIGN UNITS  SI METRIC  US CUSTOMARY

RAW MATERIAL - COMMERCIAL STANDARD  
MICRO SWITCH STANDARDS APPLY  
DIMENSIONS ARE TO BE MET BEFORE  
PROTECTIVE COATINGS ARE APPLIED

WEIGHT 08 LBS APPROX

<p>15A-125, 250 OR 277VAC</p> <p>1/2HP-125VAC; 1HP-250, 277VAC</p> <p>5A-125VAC "L" CODE L191</p>	<p>10A-125, 250 OR 277VAC</p> <p>1/4HP-125VAC; 1/2HP-250, 277VAC</p> <p>3A-125VAC "L" CODE L192</p>
---------------------------------------------------------------------------------------------------	-----------------------------------------------------------------------------------------------------