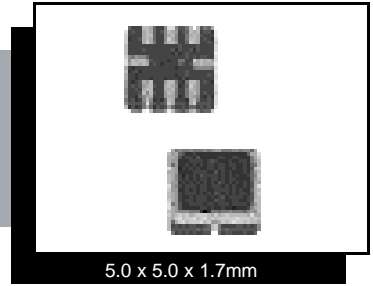


CERAMIC SURFACE-MOUNT, ONE-PORT

SAW RESONATORS

# ASR315E and ASR433E



5.0 x 5.0 x 1.7mm

## FEATURES:

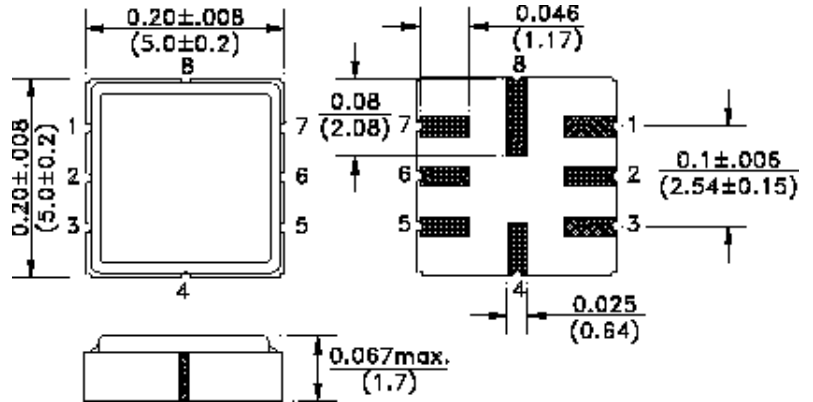
- One-port SAW resonator 315MHz and 433.92MHz. See page 87- 88 for additional frequencies.
- Small ceramic surface-mount.
- SMD makes reflow soldering possible.
- Gold plated terminals.

## APPLICATIONS:

- Wireless car alarm, Garage door opener.
- Remote keyless entry.

## ABSOLUTE MAXIMUM RATINGS:

DC voltage	12V
Operating temperature	-20°C to +85°C
Storage temperature	-40°C to +85°C
Maximum power dissipation	0dBm



## STANDARD SPECIFICATIONS

PART NUMBER	ASR315E			ASR433E				
	CHARACTERISTICS	UNIT	min.	typ.	max.	min.	typ.	max.
Center frequency	Fr	MHz	314.925	315	315.075	433.845	433.92	433.995
Insertion loss	IL	dB	-	1.6	2.5	-	1.3	2.0
Shunt capacitance	Co	pF	3.5	3.65	4.5	-	3.2	-
Motional resistance	R1	Ω	-	20.67	29	-	13.2	20
Motional inductance	L1	μH	-	100.7	-	-	66	-
Motional capacitance	C1	fF	-	2.54	-	-	2.05	-
Turn-over temperature	To	°C	-	35	-	-	35	-
Temperature coefficient	Tc	ppm/C <sup>2</sup>	-	0.032	-	-	0.032	-

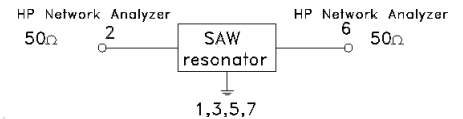
Pin No.	Function
2	Input
6	Output
4, 8 *	Case GND
1, 3,	GND
5, 7	

\* A dot could be present next to pin 8 for identification.

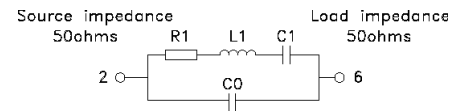
Packaging option: -T for tape and reel, see appendix H.

Reflow profile, see appendix E. Reliability specifications, see SAW application notes.

### Test circuit:



### Equivalent circuit:



### Marking:

315E  
AZY

433E  
AZY

(ZY: Date code)

Dimensions: Inches (mm)

NOTE: All specifications and markings subject to change without notice

29 Journey • Aliso Viejo, CA 92656 • USA  
(949) 448-7070 • FAX: (949) 448-8484

E-MAIL: [abinfo@abracon.com](mailto:abinfo@abracon.com) • INTERNET ADDRESS: [www.abracon.com](http://www.abracon.com)

ABRACON IS  
ISO 9001 / QS 9000  
CERTIFIED

