

Thru Hole TCXO

- 8.0 mm height
- Tight stability availability
- TTL/HCMOS output

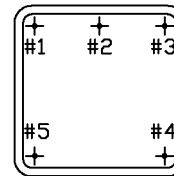
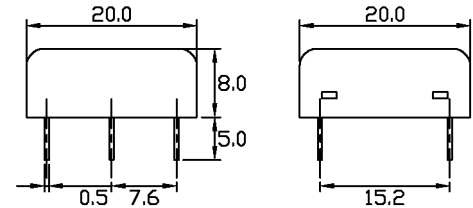
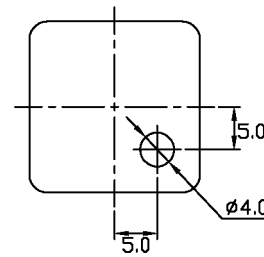
Part Numbering Example: **CC181 L - A2 B2 45 - 22.5792**

CC181	L	A2	B2	45	22.5792
SERIES	VOLTAGE	OPERATING TEMP.	STABILITY	SYMMETRY	FREQUENCY
CC181	Blank = 5V L = 3.3V	A2 = -10°C ~+60°C A3 = -30°C ~+75°C A5 = -20°C ~+70°C A9 = 0°C ~+50°C AA = -10°C ~+70°C AC = -30°C ~+60°C AE = -40°C ~+80°C	B1 = ±5.0 ppm B2 = ±3.0 ppm B3 = ±2.5 ppm B4 = ±2.0 ppm B5 = ±1.5 ppm B9 = ±4.0 ppm BB = ±4.5 ppm BF = ±3.5 ppm	Blank = 40/60% 45 = 45/55%	

Specifications:

Frequency Range:	1.000 MHz to 35.000 MHz
Available Stability Options:	±5.0 ppm ±4.5 ppm ±4.0 ppm ±3.5 ppm ±3.0 ppm ±2.5 ppm ±2.0 ppm ±1.5 ppm
Output Series:	TTL/CMOS
Input Voltage:	+5.0 VDC ±5%
Operating Temperature Range Options:	0°C to +50°C -10°C to +60°C -10°C to +70°C -20°C to +70°C -30°C to +60°C -30°C to +70°C -30°C to +75°C -40°C to +80°C
Output Voltage:	TTL $V_{OL} = 0.4$ V Max. TTL $V_{OH} = 2.4$ V Min. HCMOS $V_{OL} = 10\%V_{DD}$ V Max. HCMOS $V_{OH} = 90\%V_{DD}$ V Min.
Frequency Trim Range With Externally Adjustable Trimmer:	±3.0 ppm Minimum
Output Load:	10 LS TTL, 15 pf CMOS
Maximum Input Current:	20 mA
Maximum Rise/Fall Time:	10 ns
Duty Cycle:	40/60% 45/55%
Maximum Frequency Aging at +25°C:	±1 ppm/yr
Storage Temperature:	-40°C to +80°C
Packaging:	Tape and Reel (1K per Reel)

CC181



PIN	FUNCTION
1	V _{CC}
2	OUTPUT
3	V _{control} /GND
4	GND
5	GND

