

EM2783 Series Euro-Mag Terminal Blocks

45° Entry; Screwless; 3.50 Centers

SPECIFICATIONS

Rating: 2A, 300V

Center Spacing: .136" (3.50)

Wire Range: #16-20 AWG

Housing Material: UL rated 94V0 Thermoplastic

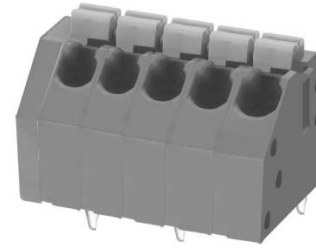
Contact Material: Tin Plated Phos Bronze

Operating Temperature: 105°C (221°F) max., -40°C (-40°F) min.

Recommended PCB Hole Diameters: .051" (1.30)

Construction: Mold to Length

Agency Information: UL/CSA; CE Certified



EM278305

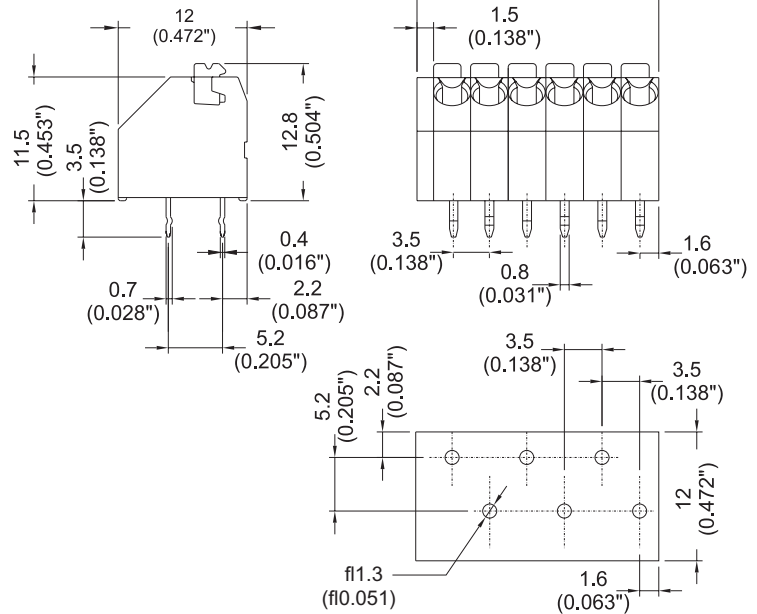
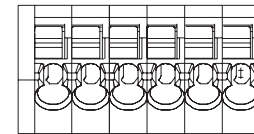


TABLE A

Poles	L (mm)
2	8.50
4	15.50
6	22.50
8	29.50
10	36.50
12	43.50
14	50.50
16	57.50
18	64.50
20	71.50
22	78.50
24	92.50

To convert to inches, divide by 25.4

Part Numbering System

Series

of Poles

EM2783

□□

02 to 24