

PLEASE CHECK WWW.MOLEX.COM FOR LATEST PART INFORMATION

Part Number: [0471190001](#)
Status: **Active**
Overview: [pogo_pins](#)
Description: 4.00mm (.157") Pitch Pogo Pin Connector, SMT, Vertical, 4.00mm (.157") Action Height, 107g Maximum Contact Force, Contact 0.10µm (4 µ") Gold Plating, 2 Circuits

Documents:

[3D Model](#) [Product Specification PS-47119-001 \(PDF\)](#)
[Drawing \(PDF\)](#) [RoHS Certificate of Compliance \(PDF\)](#)

General

Product Family	PCB Headers
Series	47119
Application	Board-to-Board
Comments	Housing: Nylon 4/6
Overview	pogo_pins
Product Name	PoGo Pin

Physical

Breakaway	No
Circuits (Loaded)	2
Circuits (maximum)	2
Durability (mating cycles max)	10,000
First Mate / Last Break	No
Glow-Wire Compliant	No
Guide to Mating Part	Yes
Keying to Mating Part	None
Lock to Mating Part	None
Mated Height (in)	0.157 In
Mated Height (mm)	4.00 mm
Material - Plating Mating	Gold
Material - Plating Termination	Gold
Number of Rows	1
Orientation	Vertical
PCB Locator	No
PCB Retention	Yes
Packaging Type	Embossed Tape on Reel
Pitch - Mating Interface (in)	0.157 In
Pitch - Mating Interface (mm)	4.00 mm
Polarized to Mating Part	No
Polarized to PCB	No
Shrouded	No
Stackable	No
Temperature Range - Operating	-40°C to +85°C
Termination Interface: Style	Through Hole

Electrical

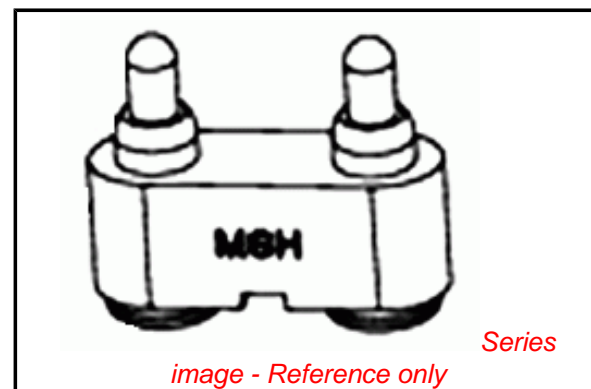
Current - Maximum per Contact	2A
Voltage - Maximum	12V DC

Solder Process Data

Lead-free Process Capability	Reflow Capable (SMT only)
Process Temperature max. C	250

Material Info

Reference - Drawing Numbers



EU RoHS

RoHS Compliant by Exemption
REACH SVHC
 Not Reviewed
Halogen-Free
Status
Not Reviewed

China RoHS



Need more information on product environmental compliance?

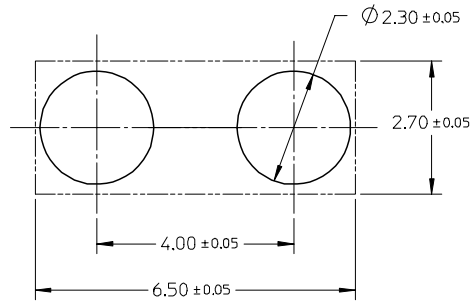
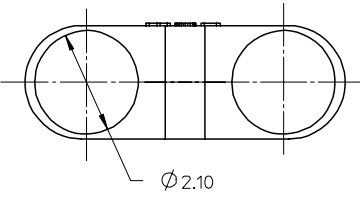
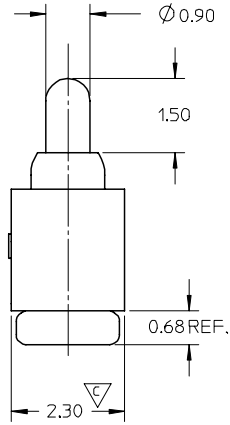
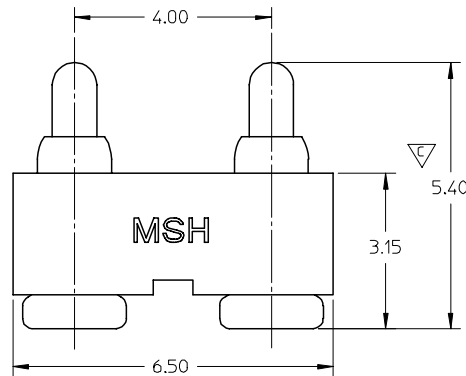
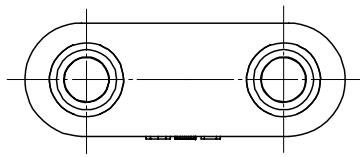
Email productcompliance@molex.com
 For a multiple part number RoHS Certificate of Compliance, [click here](#)

Please visit the [Contact Us](#) section for any non-product compliance questions.

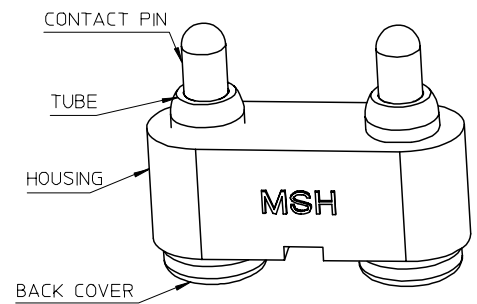
Search Parts in this Series
[47119Series](#)

This document was generated on 05/26/2010

PLEASE CHECK WWW.MOLEX.COM FOR LATEST PART INFORMATION



RECOMMEND PCB LAYOUT
COMPONENT SIDE



NOTES:

- 1 MATERIAL:
 - 1-1 CONTACT PIN, TUBE, BACK COVER : BRASS
 - 1-2 SPRING : STAINLESS-STEEL WIRE
 - 1-3 HOUSING : NYLON 46 UL 94-V0, BLACK
- 2 FINISH:
 - 2-1 CONTACT PIN : OVERALL 1.0μm MIN. GOLD OVER 3~5μm NICKEL
 - 2-2 SOLDER TERMINAL(BACK COVER) : OVERALL 0.05~0.3μm GOLD OVER 2~4μm NICKEL
- 3 PRODUCT SPECIFICATION: PS-47119-001
- 4 MECHANICAL SPECIFICATION:
 - 4-1 CONTACT FORCE AT WORKING HEIGHT OF 4.60mm (PER CONTACT) : 63±15g
 - CONTACT FORCE AT WORKING HEIGHT OF 4.32mm (PER CONTACT) : 75±15g
 - CONTACT FORCE AT WORKING HEIGHT OF 4.00mm (PER CONTACT) : 92±15g
 - 4-2 DURABILITY MATED 10,000 TIMES AND STILL MEET MECHANICAL CHARACTERISTICS
- 5 ELECTRICAL SPECIFICATION:
 - 5-1 RATED VOLTAGE (PER CONTACT) : 12 VOLTS MAX.
 - 5-2 RATED CURRENT (PER CONTACT) : 2 AMPS MAX.
 - 5-3 CONTACT RESISTANCE: 25 MILLIOHMS MAX.

CHANGE PLATING SPEC.	EC NO: 2005/10/17	DRWN: XJU	CHKD:	APPR:	DESCRIPTION	QUALITY SYMBOLS		GENERAL TOLERANCES (UNLESS SPECIFIED)		DIMENSION STYLE		SCALE	DESIGN UNITS	THIRD ANGLE PROJECTION		
						▽=0	▽=2	mm	INCH	MM ONLY		10:1	METRIC	TITLE		
						4 PLACES ±---	±---	±---	±---	DRAWN BY	DATE	2 PIN POGO PIN CONNECTOR				
						3 PLACES ±---	±---	±---	±---	XU XIANG	2005-04-20	MOLEX INCORPORATED				
						1 PLACE ±---		±---		APPROVED BY	DATE	MATERIAL NO.		DOCUMENT NO.	SHEET NO.	
						ANGULAR ±1/2°		VINCENT		2005-04-20	471190001		SD-47119-001		1 OF 1	
						DRAFT WHERE APPLICABLE		SIZE		THIS DRAWING CONTAINS INFORMATION THAT IS PROPRIETARY TO MOLEX INCORPORATED AND SHOULD NOT BE USED WITHOUT WRITTEN PERMISSION						
						MUST REMAIN WITHIN DIMENSIONS		A3								