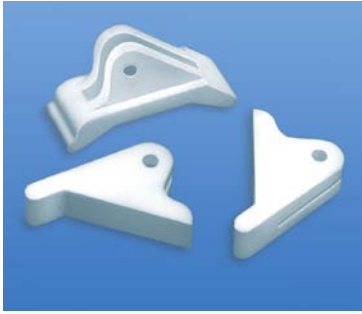


## LEVER ACTION PC CARD EJECTORS



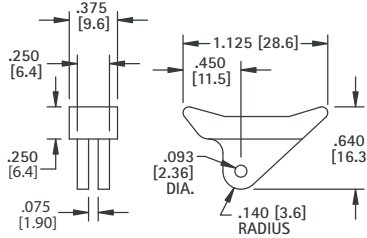
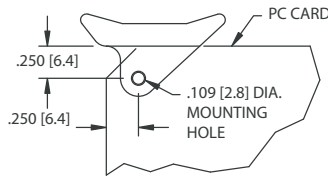
Card ejectors offer a simple and reliable way of installing and ejecting circuit boards. Card ejectors reduce the stress on board connectors by improper removal of board. Ejectors also protect components

on board from damage during removal or installation. Ejectors supplied with stainless steel pin to assure quick assembly of ejector to card.

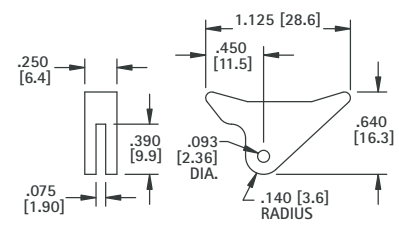
- Designed for .062 (1.57) PC cards.
- Level action ejectors aids card insertion and extraction.
- Supplied complete with stainless steel spring pin.

**MATERIAL:**  
White Nylon 6/6, UL Rated 94V-2

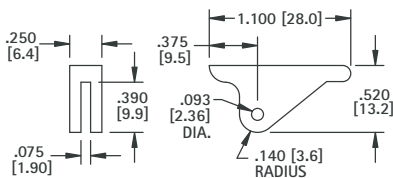
### CARD MOUNTING DIMENSIONS



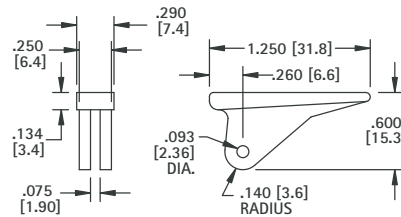
**CAT. NO. 8640**



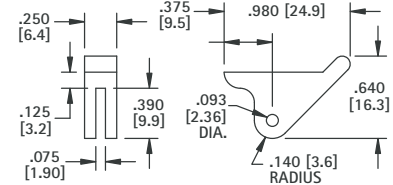
**CAT. NO. 8641**



**CAT. NO. 8642**



**CAT. NO. 8643**



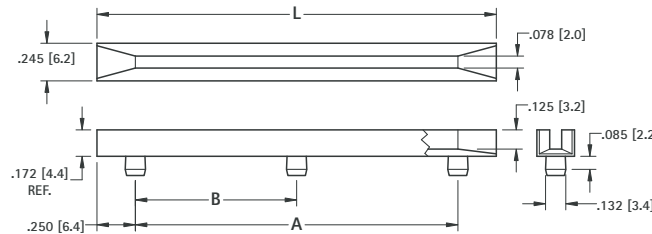
**CAT. NO. 8644**

## HORIZONTAL TYPE PC BOARD GUIDES

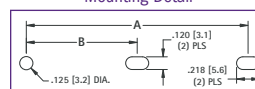


Guides may be used horizontally or vertically and snap into .125 (3.2) diameter holes. Narrow width allows maximum density and optimum airflow. Simple press-fit, secure installation. No special tools required to install.

- Sturdy Nylon construction
- Mounts into chassis with out tools
- Assures proper alignment of board
- Quick and easy installation of board.



### Mounting Detail



**MATERIAL:**  
Natural Nylon 6/6, UL Rated 94V-2

CAT. NO.	L	A	B
<b>8620</b>	2.5 (63.5)	2.0 (50.8)	-
<b>8621</b>	3.0 (76.2)	2.5 (63.5)	-
<b>8622</b>	3.5 (88.9)	3.0 (76.2)	-
<b>8623</b>	4.0 (101.6)	3.5 (88.9)	-
<b>8624</b>	4.5 (114.3)	4.0 (101.6)	-
<b>8625</b>	5.0 (127.0)	4.5 (114.3)	-
<b>8626</b>	5.5 (139.7)	5.0 (127.0)	-
<b>8627</b>	6.0 (152.4)	5.5 (139.7)	-
<b>8628</b>	6.5 (165.1)	6.0 (152.4)	-
<b>8629</b>	7.0 (177.8)	6.5 (165.1)	-
<b>8630</b>	7.0 (177.8)	6.5 (165.1)	3.25 (82.6)
<b>8631</b>	7.5 (190.5)	7.0 (177.8)	-
<b>8632</b>	7.5 (190.5)	7.0 (177.8)	3.50 (88.9)
<b>8633</b>	8.0 (203.2)	7.5 (190.5)	-
<b>8634</b>	8.0 (203.2)	7.5 (190.5)	3.75 (95.3)
<b>8635</b>	8.5 (215.9)	8.0 (203.2)	-
<b>8636</b>	8.5 (215.9)	8.0 (203.2)	4.00 (101.6)