

## LED LAMP CLUSTER

BL-CR26AR10

### Features:

- Shape: round
- Diameter: 26.0mm
- High visibility
- Emitting Color: red
- No of Built-in 5mm LED Lamps :
- Ultra orange - 10pcs
- Waterproof Package With Hood Suitable
- For Outdoor and Indoor Information Boards



### ■ Selection Guide

Part No.	Description
BL-CR26AR10	26mm square Lamp cluster 10 red, square packed

### ■ Description:

- Color Code & Chip characteristics: (Test Condition: IF=20mA)

Part No.	Built-in Lamp Package	Built-in Lamp Part No. BL-	Chip		Lens Appearance	Electro-optical Data (At 20mA)			Viewing Angle 2 $\theta$ 1/2 (deg)
			Material/ Emitted Color	Peak Wave Length $\lambda_p$ (nm)		V <sub>f</sub> (V)		I <sub>v</sub> (mcd)	
						Typ	Max		
BL-CR26 AR10	4x5x7mm 1.0" Lead Oval	L563UEC	AlGaInP/ Ultra Orange	630	Water clear	2.10	2.50	750	X-X 45 Y-Y 25

Notes:

1.  $\theta$  1/2 Is the angle from optical centerline where the luminous intensity is 1/2 the optical centerline value.

### ■ Absolute Maximum Rating (Each Lamp, Ta=25°C Derate above 25°C)

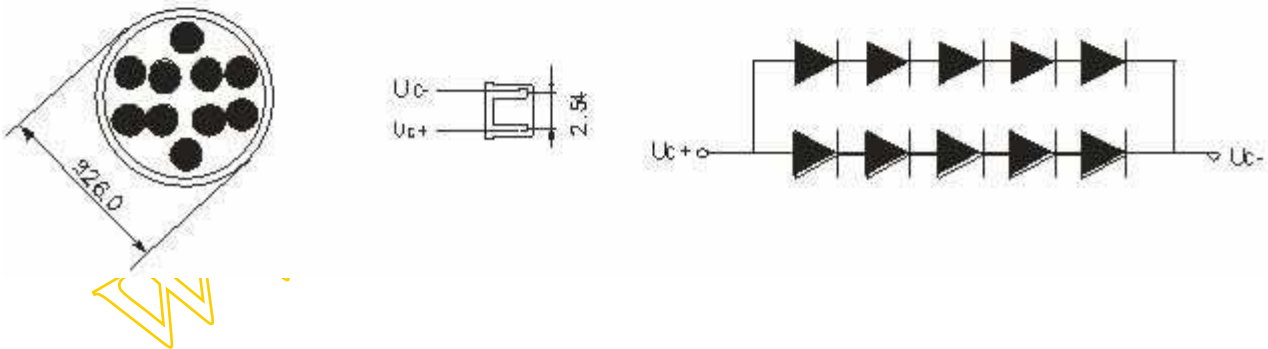
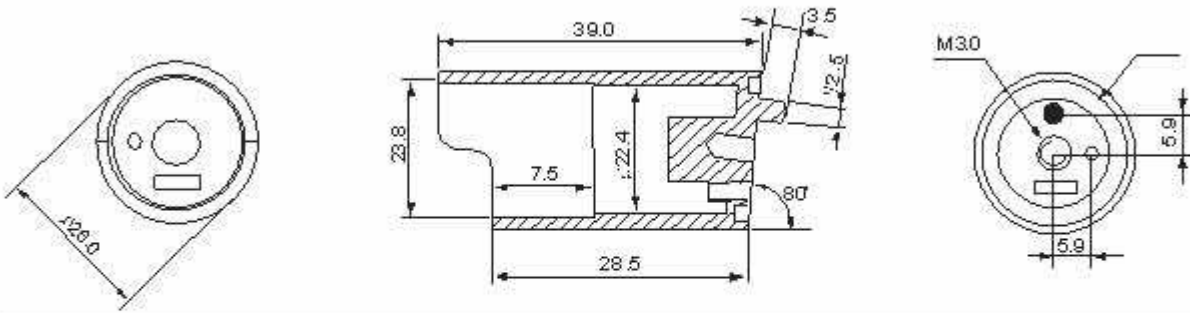
Characteristic	Symbol	Ultra Orang		Unit
Spectral Line Half width	$\Delta\lambda$	17		nm
Pulse Forward Current	IFp	150		mA
DC Forward Current	IF	30		mA
Reverse Voltage	V <sub>R</sub>	5		V
Power Dissipature	PD	65		mW
Operating Temperature	Topr	-40°C -80°C		
Storage Temperature	Tstg	-40°C -85°C		
Lead Soldering Temperature		Max.260±5°C for 3 sec Max. (1.6mm from the base of the epoxy bulb)		

## LED LAMP CLUSTER

BL-CR26AR10

### ■ Package configuration & Internal circuit diagram:

Kind	Outer Dia	Inner Dia	Step	Cape edge	Pitch
R26A	26	23.8	7.5	6	10°
R26B	26	23.8	9.5	6	10°
R26C	26	23.8	14.5	6	10°



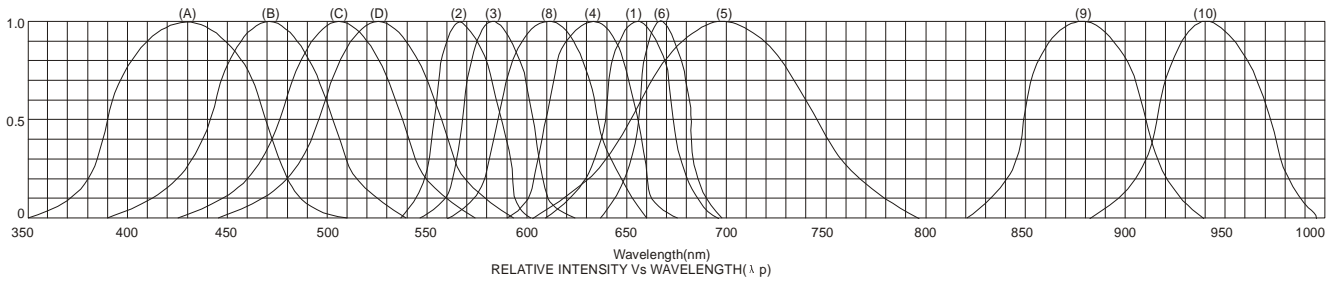
#### Notes:

- All dimensions are in millimeters (inches)
- Tolerance is  $\pm 0.25(0.01)$  unless otherwise noted.
- Specifications are subject to change without notice.

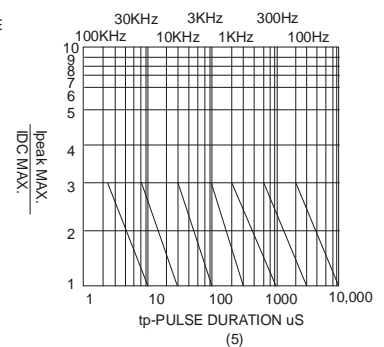
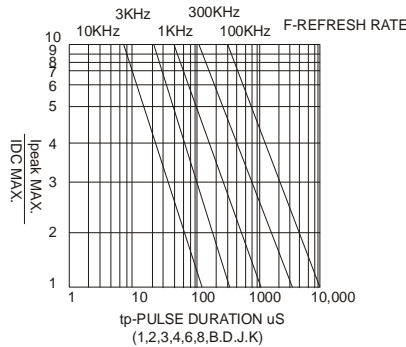
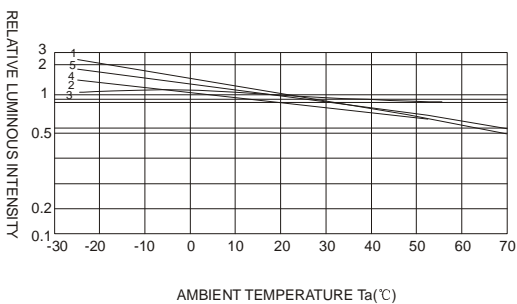
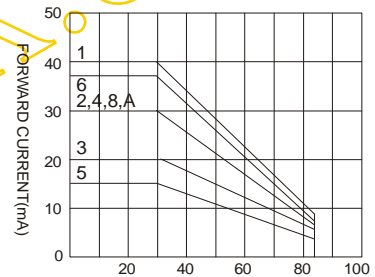
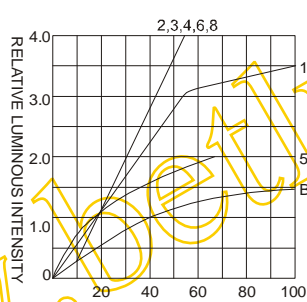
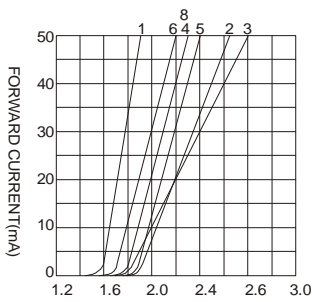
**LED LAMP CLUSTER**

**BL-CR26AR10**

**Typical electrical-optical characteristics curves:**



- (1) - GaAsP/GaAs 655nm/Red
- (2) - GaP 570nm/Yellow Green
- (3) - GaAsP/GaP 585nm/Yellow
- (4) - GaAsP/GaP 635nm/Orange & Hi-Eff Red
- (5) - GaP 700nm/Bright Red
- (6) - GaAlAs/GaAs 660nm/Super Red
- (8) - GaAsP/GaP 610nm/Super Red
- (9) - GaAlAs 880nm
- (10) - GaAs/GaAs & GaAlAs/GaAs 940nm
- (A) - GaN/SiC 430nm/Blue
- (B) - InGaN/SiC 470nm/Blue
- (C) - InGaN/SiC 505nm/Ultra Green
- (D) - InGaAl/SiC 525nm/Ultra Green



NOTE:25°C free air temperature unless otherwise specified