

AMPHENOL PART NUMBER CONFIGURATION:

U65 - X XX - X X 2 XXX

INFINITY RECEPTACLE

STYLE

- B = R/A SMT, 2 LOCATION AND 2 SOLDERING POSTS
- E = R/A SMT, 2 LOCATION AND 2 SCREW MOUNT HOLES

CONNECTOR TYPE

- 04 = 4X
- 12 = 12X

PLATING

- 1 = 50µ" GOLD
- 2 = 30µ" GOLD
- 3 = GOLD FLASH OVER PALLADIUM-NICKEL (LEAD FREE)
- 4 = 50µ" GOLD (RoHS COMPLIANT)
- 5 = 30µ" GOLD (RoHS COMPLIANT)

JACK SCREW OPTION

- 0 = SHIPPED LOOSE (REGULAR SCREW)
- 1 = SHIPPED LOOSE (SELF-LOCKING SCREW)
- 2 = NO JACK SCREW (ORDER SEPERATELY)

PACKAGING/SPECIAL

- NO DIGIT = TRAY PACKAGING NO REAR COVER
- C = TRAY PACKAGING WITH REAR COVER (SHIPPED LOOSE)
- T = TAPE & REEL PACKAGING NO REAR COVER
- CT = TAPE & REEL PACKAGING WITH REAR COVER (SHIPPED LOOSE)

KEYING OPTION

- 0 = NO KEYING (STD)

MOUNTING STYLE SCREW LOCK

1. MATERIAL:

PLASTIC HOUSING:

HIGH TEMPERATURE RESISTANT NYLON, FLAMMABILITY RATING UL94V-0.

CONTACTS:

PHOSPHOR BRONZE

PLATING OPTION (50µ" OR 30µ" GOLD):

50µ" [1.27 µm] OR 30µ" [0.76 µm] MIN. GOLD OVER 50µ" [1.27 µm] MIN. NICKEL ON CONTACT MATING SURFACES. 150µ" [3.81 µm] MIN. TIN-LEAD (90/10) OVER 50µ" [1.27 µm] NICKEL ON CONTACT TAILS.

PLATING OPTION (GOLD FLASH OVER PALLADIUM-NICKEL):

2µ" [0.05 µm] MIN. GOLD OVER 25µ" [0.635 µm] MIN. PALLADIUM-NICKEL ON CONTACT MATING SURFACES. 0.3µ" [0.007 µm] MIN. GOLD OVER 1.2µ" [0.03 µm] MIN. PALLADIUM-NICKEL ON CONTACT TAILS. 50µ" [1.27 µm] MIN. NICKEL UNDER PLATING.

PLATING OPTION (RoHS) (50µ" OR 30µ" GOLD):

50µ" [1.27 µm] OR 30µ" [0.76 µm] MIN. GOLD OVER 50µ" [1.27 µm] MIN. NICKEL ON CONTACT MATING SURFACES. 2µ" [0.05 µm] MIN. GOLD OVER 50µ" [1.27 µm] MIN. NICKEL ON CONTACT TAILS.

METAL SHELL:

DIE CASTING ALLOY

PLATING:

100µ" [2.54 µm] MIN. NICKEL OVER COPPER UNDER LAYER

GASKET:

STAINLESS STEEL

JACK SCREW:

STEEL

PLATING:

100µ" [2.54 µm] MIN. NICKEL OVER ALL

RECOMMENDED TORQUE: 4-4.5 IN LB.

2. TEMPERATURE RANGE:

-40°C TO +85°C

REVISIONS				
SYM	ZONE	ECN, ERN NO.	DATE	APPRD.
A		PROPOSAL	2009/01/28	
B		EAR # 12705	2009/02/19	

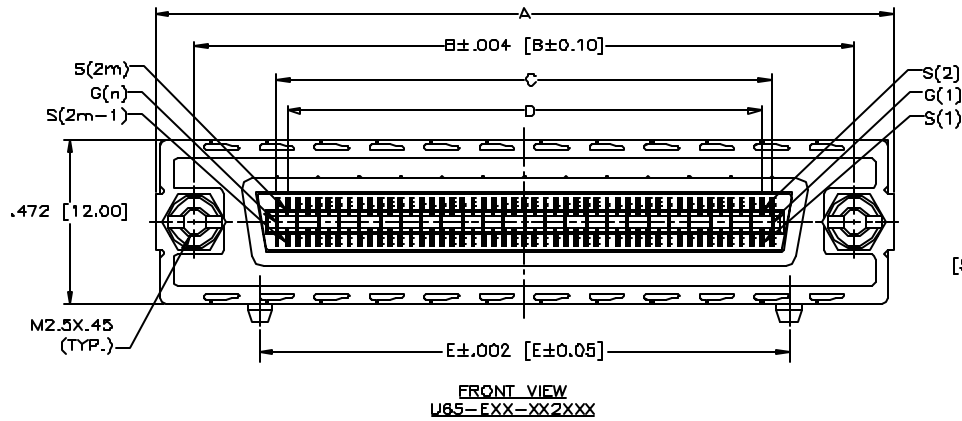
THIS IS A CAD DRAWING. DO NOT MANUALLY REVISE.

THIS DOCUMENT CONTAINS PROPRIETARY INFORMATION AND SUCH INFORMATION MAY NOT BE DISCLOSED TO OTHERS FOR ANY PURPOSE OR USED FOR MANUFACTURING PURPOSES WITHOUT WRITTEN PERMISSION FROM AMPHENOL CANADA CORP.

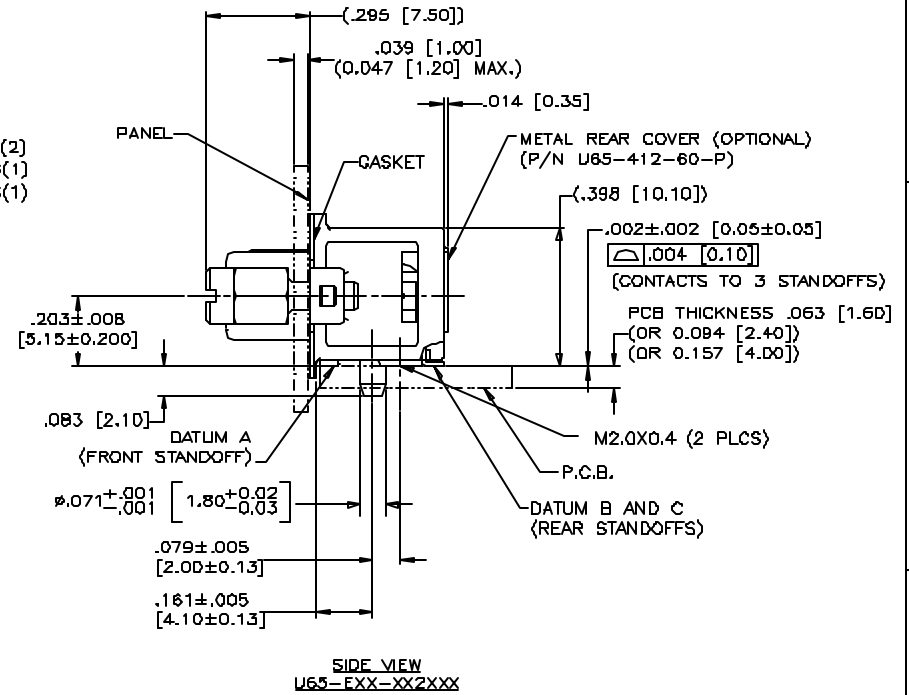
DRAWN	L.DENG	DATE	2009/01/24	Amphenol Canada Corp.
DESIGNED				
CHECKED	J.SY	DATE	2009/01/28	
ENG. APPRD.				
D. A. APPRD.				TITLE
DWG. APPRD.				INFINITY 4X/12X RECEPTACLE, SCREW LOCK STYLE, FIXED BOARD, RIGHT ANGLE SMT
ENG. REL. NO.				DWG
REF.	EAR # 12838			A
DIMENSIONS ARE IN	CODE ID. NO.			DRAWING NO.
INCHES /mm	03554			P-U65-XXX-XX2XXX
		SCALE	2/1	WT. ---
		BURF.	---	SHEET 1 OF 4
				REV. B

REVISIONS			
SYM	ZONE	ECN, ERN NO.	DATE
A		PROPOSAL	2006/01/26
B		EAR # 12705	2006/03/24

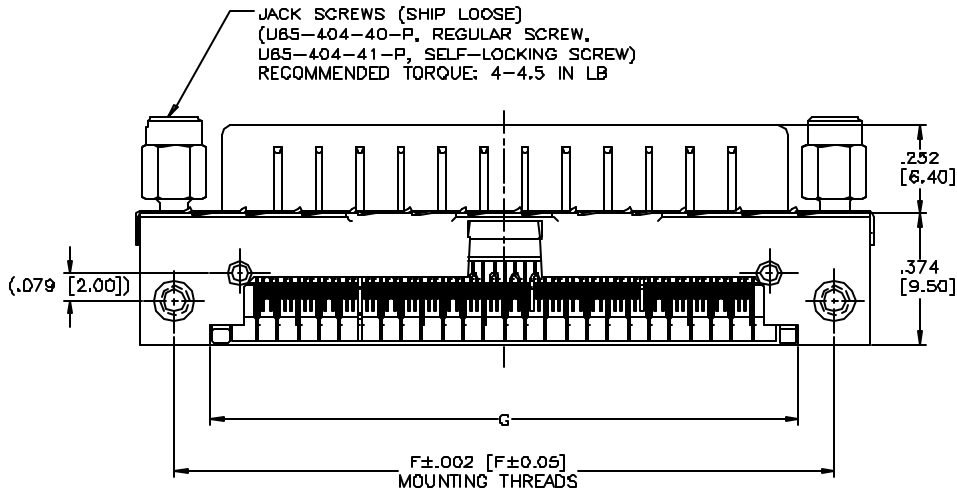
THIS IS A CAD DRAWING. DO NOT MANUALLY REVISE.



FRONT VIEW
U65-EXX-XX2XXX



SIDE VIEW
U65-EXX-XX2XXX



BOTTOM VIEW
U65-EXX-XX2XXX

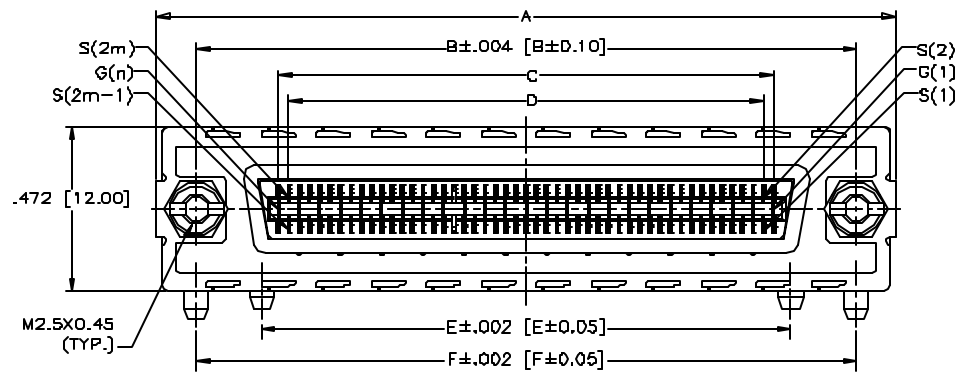
** REFER TO [mm] AS PRIMARY DIMENSIONS.

DRAWN	L.DENG	DATE	2006/01/26	Amphenol Canada Corp.	
DESIGNED					
CHECKED	J.SI	DATE	2006/01/26	TITLE	
L. E. APPRD.				INFINITY 4X/12X RECEPTACLE, SCREW LOCK STYLE, FIXED BOARD, RIGHT ANGLE SMT	
DWG. APPRD.				DWG	DRAWING NO.
ENG. REL. NO.				A	P-U65-XXX-XX2XXX
REF.	EAR # 12536			REV.	B
DIMENSIONS ARE IN INCHES /mm/			03554	SCALE	2/1
				WT.	
				SURF.	
				SHEET	3 OF 4

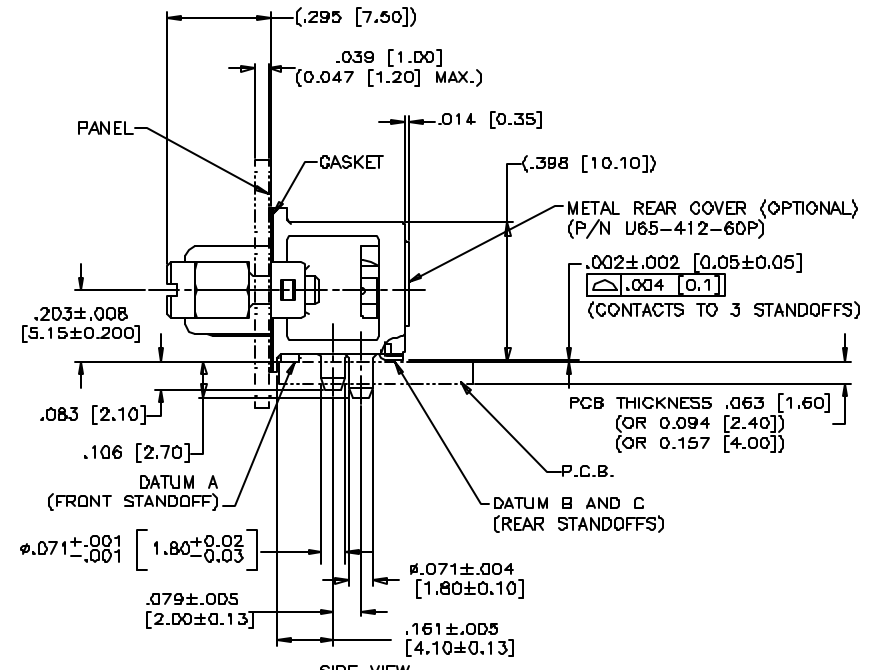
THIS DOCUMENT CONTAINS PROPRIETARY INFORMATION AND SUCH INFORMATION MAY NOT BE DISCLOSED TO OTHERS FOR ANY PURPOSE OR USED FOR MANUFACTURING PURPOSES WITHOUT WRITTEN PERMISSION FROM AMPHENOL CANADA CORP.

REVISIONS				
SYM	ZONE	ECN, ERN NO.	DATE	APPRD.
A		PROPOSAL	2006/01/28	
B		EAR# 12705	2006/03/22	

THIS IS A CAD DRAWING. DO NOT MANUALLY REVISE.

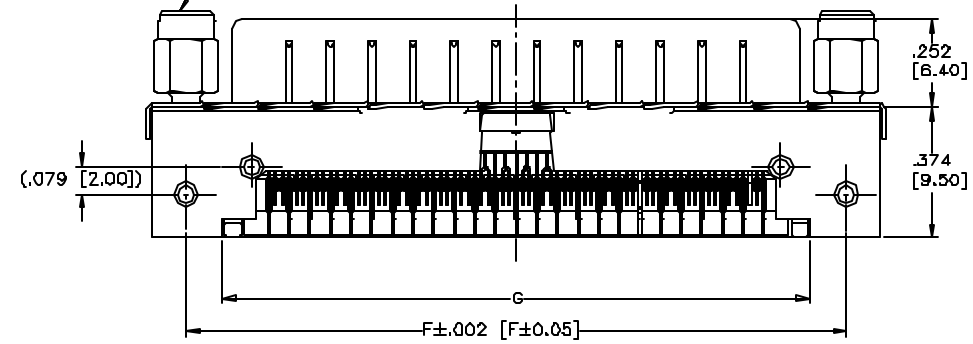


FRONT VIEW
U65-BXX-XX2XXX



SIDE VIEW
U65-BXX-XX2XXX

JACK SCREWS (SHIP LOOSE)
(U65-404-40-P, REGULAR SCREW,
U65-404-41-P, SELF-LOCKING SCREW)
RECOMMENDED TORQUE: 4-4.5 IN LB



BOTTOM VIEW
U65-BXX-XX2XXX

PART NUMBER	U65-B04-XXE0XX	U65-B12-XXE0XX
A	1.169 [28.70]	2.114 [53.70]
B	.945 [24.00]	1.890 [48.00]
C	.472 [12.00]	1.417 [36.00]
D	.413 [10.50]	1.358 [34.50]
E	.571 [14.50]	1.518 [38.50]
F	.945 [24.00]	1.890 [48.00]
G	.735 [18.70]	1.681 [42.70]
H	1.063 [27.00]	2.008 [51.00]
K	.776 [19.70]	1.720 [43.70]
m	m = 1 - 8	m = 1 - 24
n	n = 1 - 9	n = 1 - 25

** REFER TO [mm] AS PRIMARY DIMENSIONS.

DRAWN	L.DENG	DATE	2006/01/24
DESIGNED			
CHECKED	J.SI	DATE	2006/01/28
I. E. APPRD.			
G. A. APPRD.			
ENGL. APPRD.			
ENG. REL. NO.			
REF. EAR #	12635		
DIMENSIONS ARE IN	INCHES [mm]	CODE D. NO.	D3554

Amphenol Canada Corp.

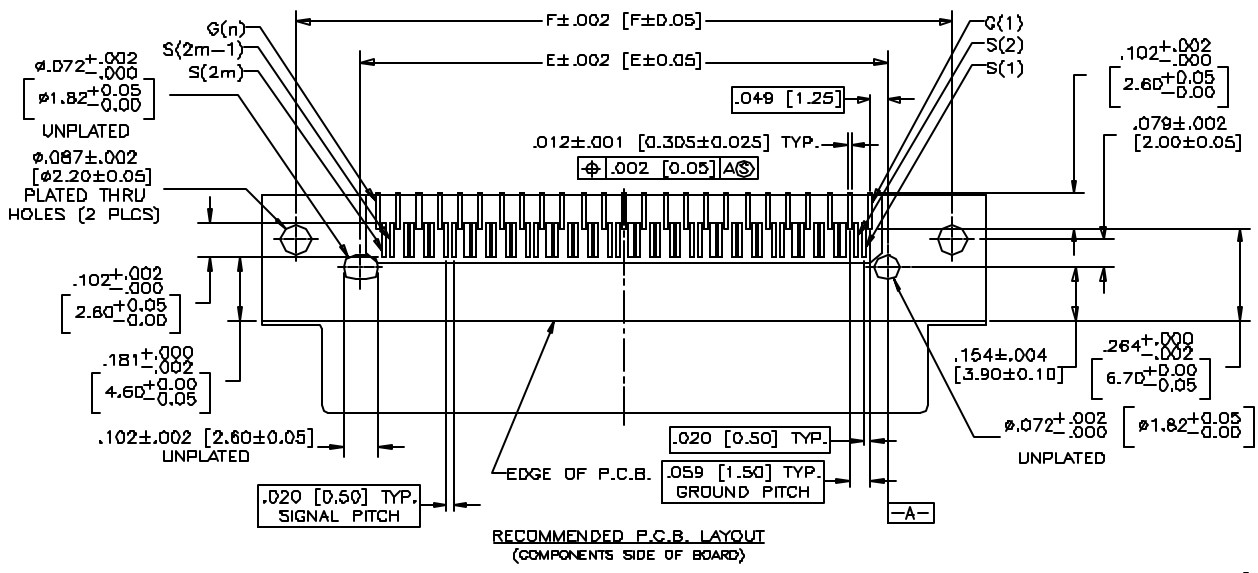
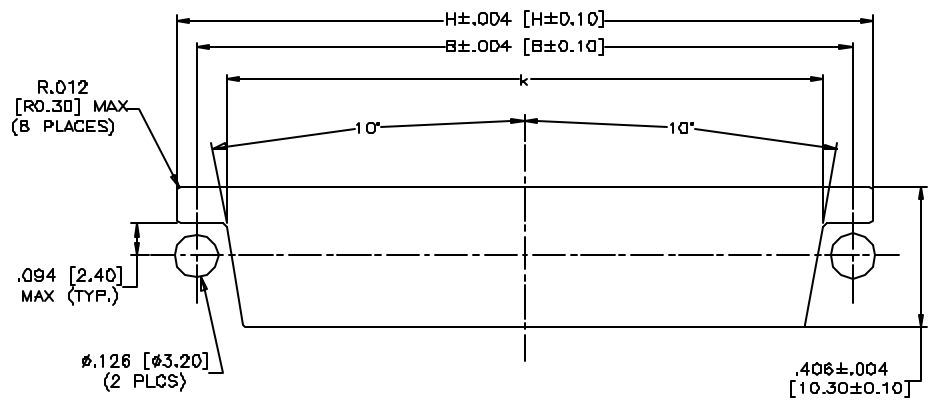
TITLE
INFINITY 4X/12X RECEPTACLE, SCREW LOCK
STYLE, FIXED BOARD, RIGHT ANGLE SMT

DWD	DRAWING NO.	REV.
A	P-U65-XXX-XX2XXX	B
SCALE	2/1	WT. _____
SURF.	_____	SHEET 2 OF 4

THIS DOCUMENT CONTAINS PROPRIETARY INFORMATION AND SUCH INFORMATION
MAY NOT BE DISCLOSED TO OTHERS FOR ANY PURPOSE OR USED FOR MANUFACTURING
PURPOSES WITHOUT WRITTEN PERMISSION FROM AMPHENOL CANADA CORP.

REVISIONS				
SYM	ZONE	ECN, ERN NO.	DATE	APPRD.
A		PROPOSAL	2025/01/26	
B		EAR # 12705	2025/03/24	

THIS IS A CAD DRAWING. DO NOT MANUALLY REVISE.



** REFER TO [mm] AS PRIMARY DIMENSIONS.

DRAWN	L.DENG	DATE	2025/01/24	Amphenol Canada Corp.	
DESIGNED					
CHECKED	J.S.	DATE	2025/01/28	TITLE	
L. E. APPRDL.				INFINITY 12X RECEPTACLE, SCREW LOCK STYLE, FIXED BOARD, RIGHT ANGLE SMT	
Q. A. APPRDL.					
DWG. APPRDL.					
ENG. REL. NO.		DWG	A	DRAWING NO.	P-U65-XXX-XX2XXX
REF.	EAR # 12836			REV.	B
DIMENSIONS ARE IN CODE 10. INL		INCHES [mm]		03554	SCALE 2/1
		WT.		SURF.	
				SHEET 4 OF 4	

THIS DOCUMENT CONTAINS PROPRIETARY INFORMATION AND SUCH INFORMATION MAY NOT BE DISCLOSED TO OTHERS FOR ANY PURPOSE OR USED FOR MANUFACTURING PURPOSES WITHOUT WRITTEN PERMISSION FROM AMPHENOL CANADA CORP.