

D-SUB Connector

SPECIFICATIONS

Mechanical

Contact Engagement Force : 0.34 Kgf/ Pin max.
Contact Separation Force : 0.021 Kgf/ Pin min.
Durability : 500 Cycles

Electrical

Voltage Rating: 240V
Current Rating: 1A
Contact Resistance: 30 mΩ max.
Dielectric Withstanding Voltage: 500V AC/1 min.
Insulation Resistance: 5000MΩ

Physical

Housing: Thermoplastic, UL 94V-0 rated in Black/ PC99 Color
Contact: Copper alloy
Plating: See "ORDERING INFORMATION"
Solder Pad: Copper alloy
Operating Temperature: -55 to +105

DS Series

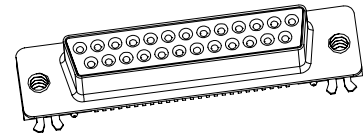
Right Angle, SMT, Female Type

25 Pos.

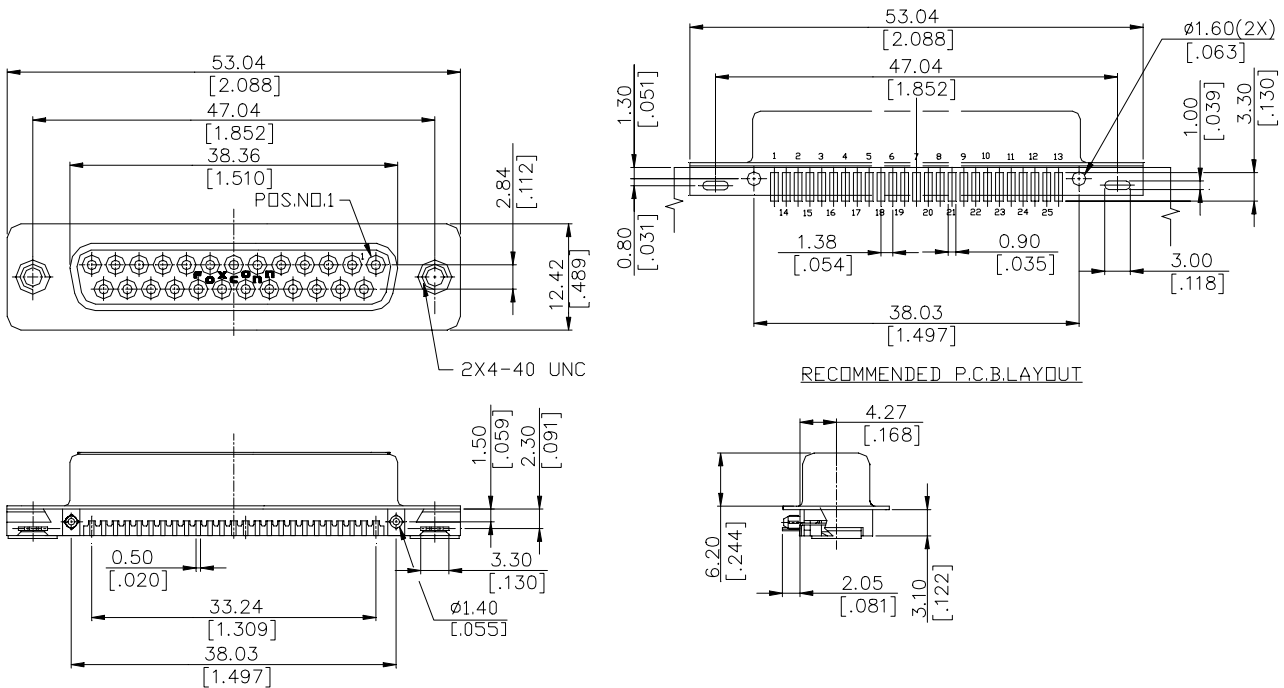
Center Height 4.27 mm

Recommended PCB's

Thickness 1.0 or 1.2 mm



DRAWING



ORDERING INFORMATION

PRODUT NO.: DS 0 1 3 9 * - N * 201 - * F

- D-SUB SMT Series
- Terminator Type
0 = Straight Angle
- Contact Design Type
0 = Female
- NO. Of Contact POS.
1 = 25 POS.
- Body Length
- Lead Free Code
- Package Code
4 = Soft Tray
7 = Tape & Reel
- Extension Code
- Housing Color
B = Black
U = Burgungy
R/A Normal Type
- Contact Area Plating
1=Gold Flash
2=20u" Gold Plating
3=30u" Gold Plating
6=10u" Gold Plating
7=15u" Gold Plating