

# AC Power Line Choke

## EPZ3045H-XXX

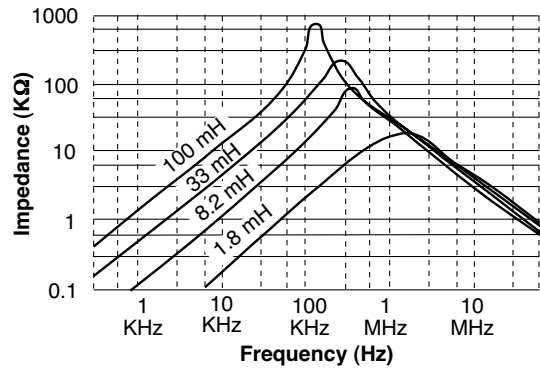


- Used as AC Power Line Filters in CTV, VTR, Audio, PC, Facsimilie and Power Supply Applications
- UL940-V Recognized Materials
- Temperature Rise : 45°C Max.
- UL1446 Insulating System
- 2000 Vrms Isolation

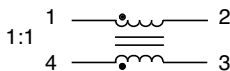
### Electrical Parameters @ 25° C

Part Number	Inductance (mH Min.) [Pins 1-2, 4-3]	Current Rating (A rms Max.)
EPZ3045H-561	.56	3.4
EPZ3045H-122	1.2	3.0
EPZ3045H-152	1.5	2.4
EPZ3045H-222	2.2	2.2
EPZ3045H-272	2.7	2.0
EPZ3045H-332	3.3	1.8
EPZ3045H-392	3.9	1.5
EPZ3045H-562	5.6	1.4
EPZ3045H-682	6.8	1.2
EPZ3045H-822	8.2	1.0
EPZ3045H-103	10	1.0
EPZ3045H-123	12	0.9
EPZ3045H-183	18	0.8
EPZ3045H-273	27	0.6
EPZ3045H-333	33	0.5
EPZ3045H-393	39	0.5
EPZ3045H-683	68	0.4

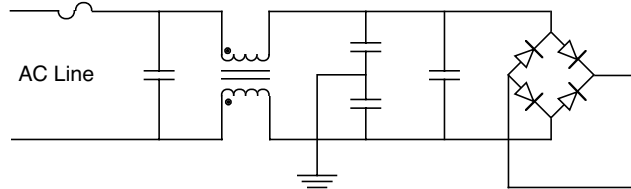
### Impedance Characteristics



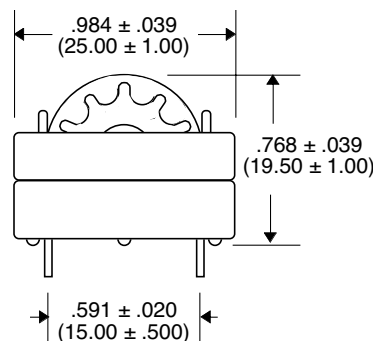
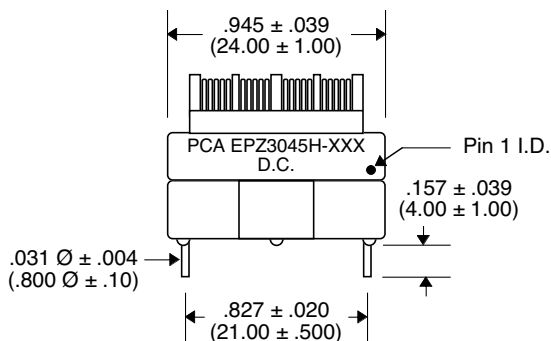
### Schematic



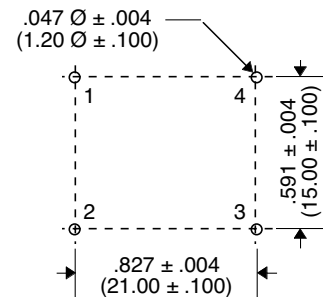
### Circuit Sample



### Package



### Recommended PWB Piercing Plan



Unless Otherwise Specified Dimensions are in Inches /mm ±.010 / .25