

6

5

4

3

2

1

MATERIAL AND FINISH

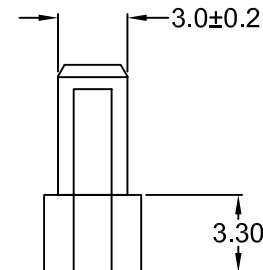
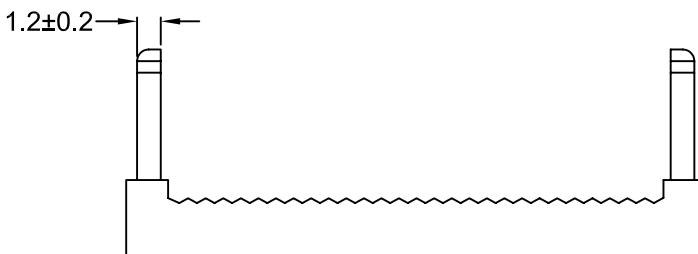
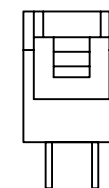
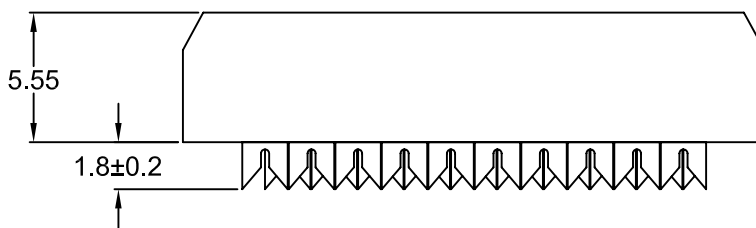
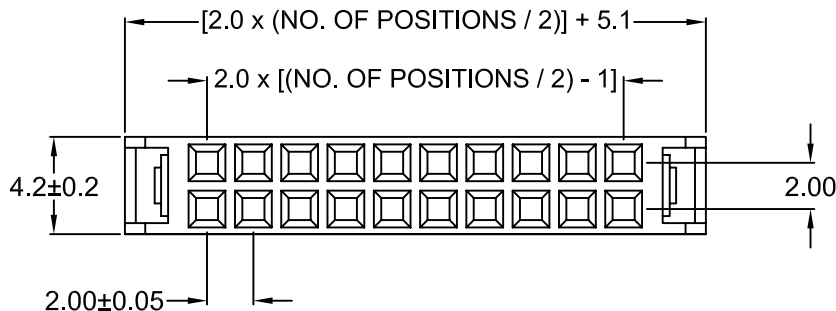
Insulator: PBT, 30% glass-filled, UL-94V-0 rated, color black
Contacts: Phosphor bronze, Selective Gold plated (see chart) over Nickel

ELECTRICAL SPECIFICATIONS:

Rated current: 1A
Insulation resistance: 1000 Mohm min. at 500VDC
Contact resistance: 12 Mohm max. @ 6VDC 0.3A
Dielectric withstanding voltage: 500VAC for one minute

Operating temperature: -55°C to +105°C

NOTE: USE IDC FLAT CABLE. 1.0mm PITCH
28AWG STRANDED OR 30AWG SOLID



REVISIONS	CHNG	CHK	APPR
	CHANGE		
REV	DATE		

P/N	PLATING
TCSD-0XX-I-20	Gold Flash
TCSD-0XX-I-1-20	5 μ" Gold
TCSD-0XX-I-2-20	10 μ" Gold
TCSD-0XX-I-3-20	15 μ" Gold
TCSD-0XX-I-4-20	30 μ" Gold

TOLERANCE UNLESS OTHERWISE SPECIFIED	
X	± 1
X.X	± 0.4
X.XX	± 0.20
DRAWN BY	PB
DATE:	12/12/01
CHECK BY	TD
DATE:	12/12/01
APPR BY	
DATE:	

Power Dynamics, Inc.
Phone: 973 560-0019 Whippany, New Jersey Fax: 973 560-0076

PART: RECEPTACLE; 2.0mm PITCH; 10-68 PINS
DOUBLE ROW / IDC FLAT WIRE

TCSD-0XX-I-X-20

PART #: **TCSD-0XX-I-X-20** SHEET 1 of 1

SIZE: A ALL DIMENSIONS FOR REFERENCE ONLY
SCALE: NTS DIMENSIONS ARE IN MILLIMETERS REV:

6

5

4

3

2

1