

A black and white photograph showing three different styles of guitar pickups. From left to right: a humbucker pickup with a chrome cover and two mounting tabs; a single-coil pickup with a chrome cover and a single mounting tab; and a P-90 pickup with a black cover and a single mounting tab. Each pickup has a wire lead extending from its back.

Shell	Brass / Nickel plate
Insulator	PBT resin (UL94V-O) / Blue
Contact	Copper alloy / Gold plate (contact point) Solder plate (tail)
Spring latch	Stainless steel

Ordering Information

Unit:mm(inch)

57GE - 40 36 0 - 7 5 1 (D20)

CONNECTOR STYLE

10 : Plug
40 : Receptacle,
with spring latch

NO. OF CONTACTS

Plug : 24, 36, 50
Receptacle : 14, 24, 36, 50

CONTACT PLATING

7 : 0.4 μ m(15 μ) Gold over Nickel
Tail.....Solder plating

TAIL LENGTH

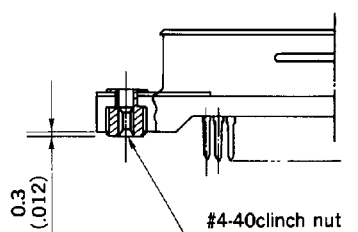
5 : 3.2mm(.126)

TAIL SPACING

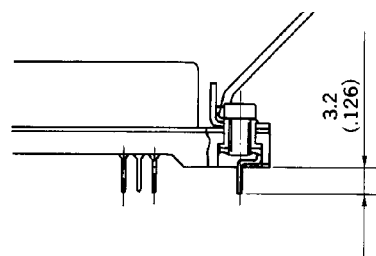
1 : 4.2mm(.165) (for receptacle)
2 : 3.9mm(.154) (for plug)

DEVIATION (see diagrams below)

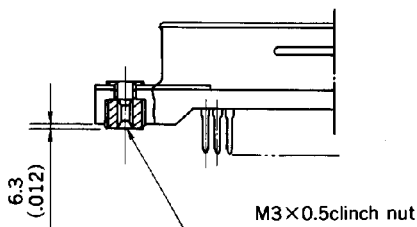
(D4) : with #4-40 clinch nut
(D8) : with M3 \times 0.5 clinch nut
(D15) : with board lock
(D20) : with M3 \times 0.5 clinch nut
(for 57GE-10)



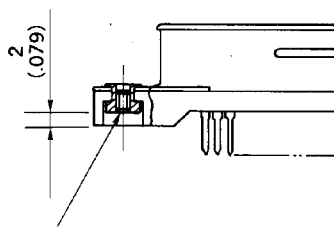
Deviation : (D4)



Deviation : (D15)



Deviation : (D8)



Deviation : (D20)

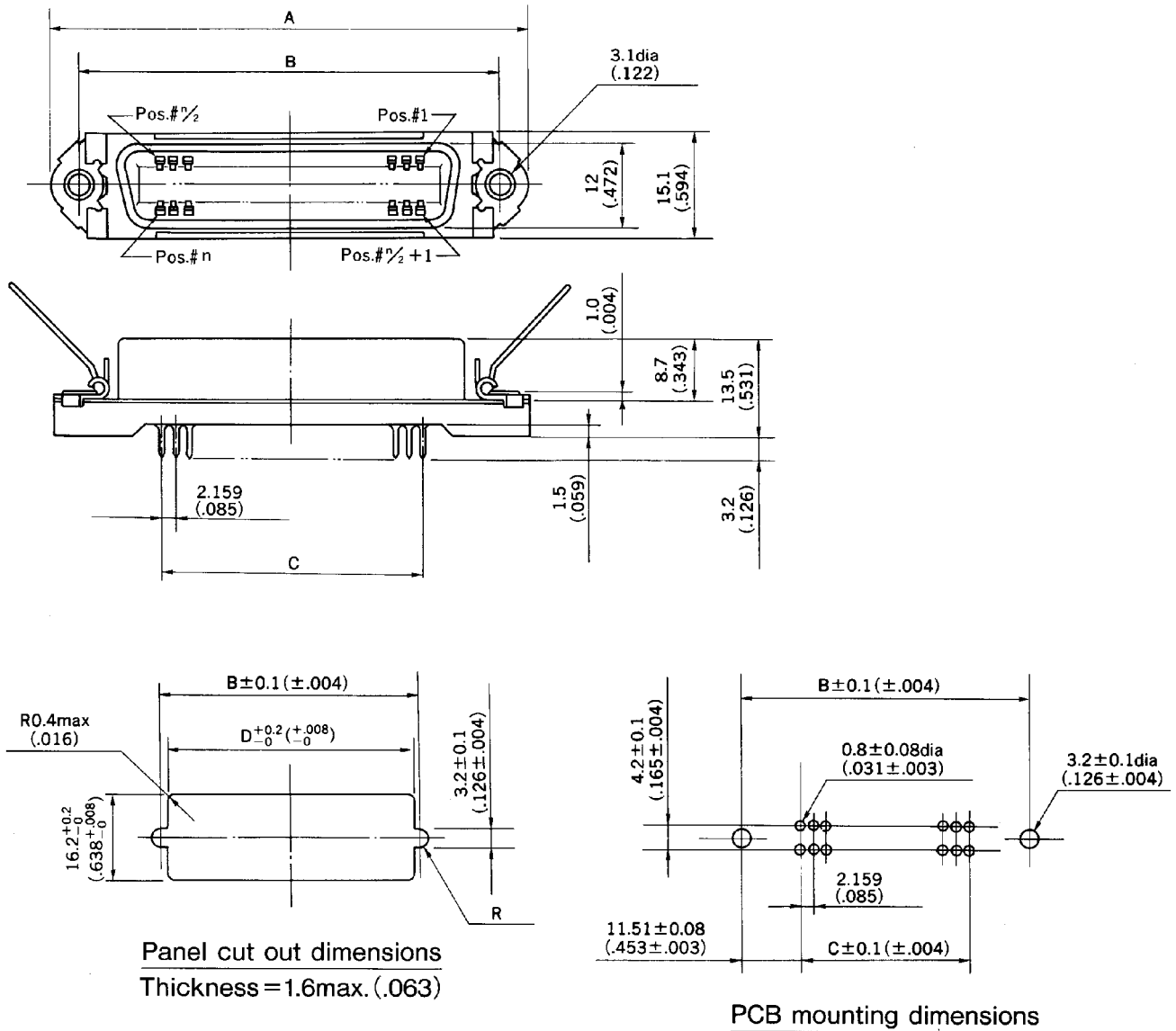
57GE Series



● Receptacles

Unit:mm(inch)

P/N : 57GE-40xx0-x51



NO. OF CONT'S	A	B	C	D
14	44.00 (1.732)	36.00 (1.417)	12.96 (.510)	35.3 (1.390)
24	54.78 (2.157)	46.78 (1.842)	23.76 (.935)	46.08 (1.814)
36	67.74 (2.667)	59.74 (2.352)	36.72 (1.446)	59.04 (2.324)
50	82.85 (3.262)	74.85 (2.947)	51.84 (2.041)	74.15 (2.919)

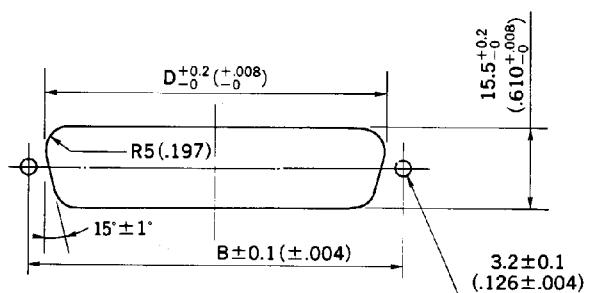
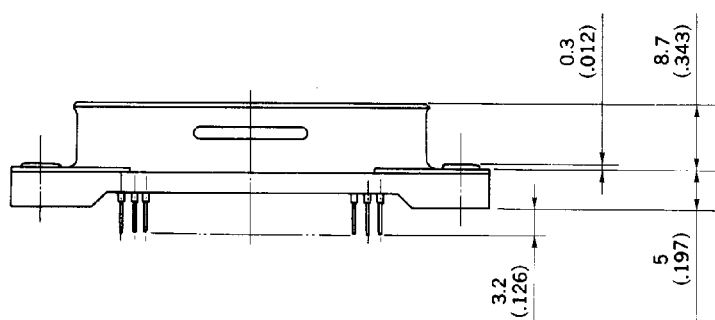
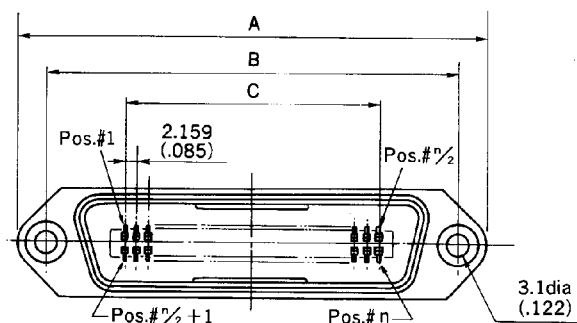
57GE Series



● Plug

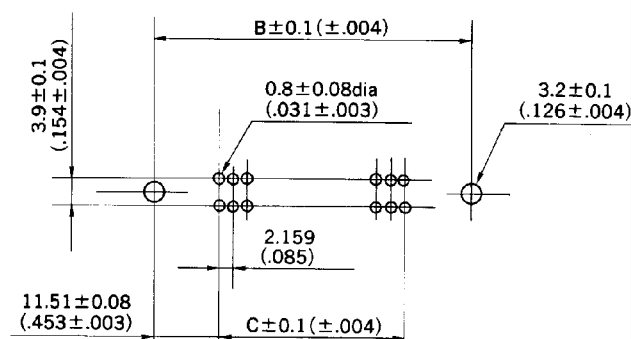
Unit:mm(inch)

P/N : 57GE-10xx0-x52



Panel cut out dimensions

Thickness = 1.6max (.063)



PCB mounting dimensions

NO. OF CONT'S	A	B	C	D
14	44.0 (1.732)	36.0 (1.417)	12.96 (.510)	29.3 (1.154)
24	54.78 (2.157)	46.78 (1.842)	23.76 (.935)	40.1 (1.579)
36	67.74 (2.667)	59.74 (2.352)	36.72 (1.446)	53.0 (2.087)
50	82.85 (3.262)	74.85 (2.947)	51.84 (2.041)	68.2 (2.685)