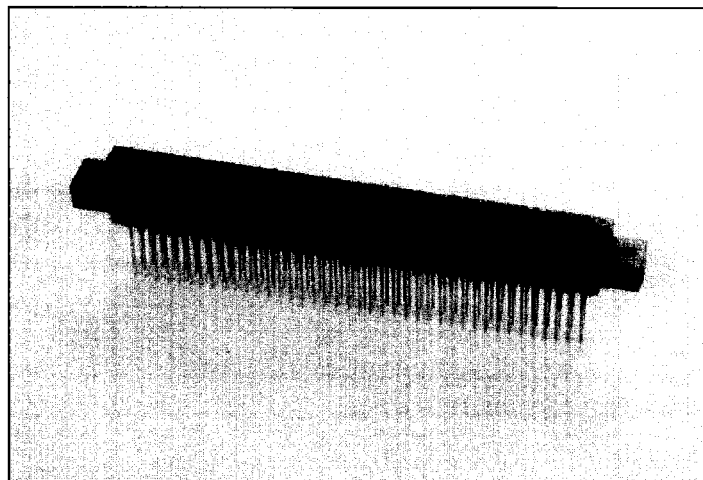


.100 x .200

Features

- Round and square solder tails available.
- High reliability bifurcated, bellows-type contacts
- Available in solder-to-board and .025" square wire wrap tail lengths.
- Straight and right angle configurations.
- Selective gold and tin plating options.
- Offset and flush mounting ear styles.



No. of Contact Positions	A	B	C	D	E	F
10/20	1.835 (46.61)	1.575 (40.01)	1.260 (32.00)	1.100 (27.94)	.900 (22.86)	1.150 (29.21)
12/24	2.035 (51.69)	1.775 (45.09)	1.460 (37.08)	1.300 (33.02)	1.100 (27.94)	1.350 (34.29)
15/30	2.335 (59.31)	2.075 (52.71)	1.760 (44.70)	1.600 (40.64)	1.400 (35.56)	1.650 (41.91)
18/36	2.635 (66.93)	2.375 (60.33)	2.060 (52.32)	1.900 (48.26)	1.700 (43.18)	1.950 (49.53)
20/40	2.835 (72.01)	2.575 (65.41)	2.260 (57.40)	2.100 (53.34)	1.900 (48.26)	2.150 (54.61)
22/44	3.035 (77.09)	2.775 (70.49)	2.460 (62.48)	2.300 (58.42)	2.100 (53.34)	2.350 (59.69)
25/50	3.335 (84.71)	3.075 (78.11)	2.760 (70.10)	2.600 (66.04)	2.400 (60.96)	2.650 (67.31)
28/56	3.635 (92.33)	3.375 (85.73)	3.060 (77.72)	2.900 (73.66)	2.700 (68.58)	2.950 (74.93)
30/60	3.835 (97.41)	3.575 (90.81)	3.260 (82.80)	3.100 (78.74)	2.900 (73.66)	3.150 (80.01)
31/62	3.935 (99.95)	3.675 (93.35)	3.360 (85.34)	3.200 (81.28)	3.000 (76.20)	3.250 (82.55)
35/70	4.335 (110.11)	4.075 (103.51)	3.760 (95.50)	3.600 (91.44)	3.400 (86.36)	3.650 (92.71)
36/72	4.435 (112.65)	4.175 (106.05)	3.860 (98.04)	3.700 (93.98)	3.500 (88.90)	3.750 (95.25)
40/80	4.835 (122.81)	4.575 (116.21)	4.260 (108.20)	4.100 (104.14)	3.900 (99.06)	4.150 (105.41)
43/86	5.135 (130.43)	4.875 (123.83)	4.560 (115.82)	4.400 (111.76)	4.200 (106.68)	4.450 (113.03)
50/100	5.835 (148.21)	5.575 (141.61)	5.260 (133.60)	5.100 (129.54)	4.900 (124.46)	5.150 (130.81)
60/120	6.835 (173.61)	6.575 (167.01)	6.260 (159.00)	6.100 (154.94)	5.900 (149.86)	6.150 (156.21)
70/140	7.835 (199.01)	7.575 (192.41)	7.260 (184.40)	7.100 (180.34)	6.900 (175.26)	7.150 (181.61)

Specifications

Current Rating:	3 Amperes
Contact Resistance:	8 Milliohms Max.
Dielectric Withstanding Voltage:	1000 VAC RMS (Sea Level)
Insulation Resistance:	5000 Megohms Min.
Operating Temperature:	-65°C to +125°C
Insertion Force:	10 oz. Max. per Pair
Withdrawal Force:	1 oz. Min. per Pair
Insulator Material:	Thermoplastic Glass Filled Polyester, Rated 94V-0
Contact Material & Finish:	See Ordering Code
Mounting Inserts & Bushings Material & Finish:	Brass-Nickel Plated

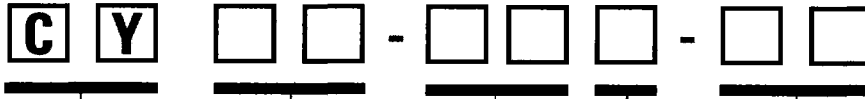
Polarization – Order polarization keys separately.
Between contact key – Eby P/N 9775-508-02.

**Specifications are subject to change without notice.
For special requirements consult factory.**



.100 x .200

Ordering Code



Series

Number of
Dual Positions

10, 12, 15, 18, 20, 22, 25, 28, 30,
31, 35, 36, 40, 43, 50, 60, 70
(see chart for standard sizes)

Contact Terminations & Lengths

OA - Printed Circuit-Straight (.025 sq. x .19 Tail Length)
OB - Solderless Wrap (.025 sq. x .57 Tail Length)
OF - Printed Circuit-Straight (.026 dia. x .18 Tail Length)
OH - Printed Circuit-Right Angle

Mounting Types

Flush Mounting Types

A - .128 Dia. Clearance Holes
B - #4-40 Threaded Inserts

Offset Mounting Types

J - .128 Dia. Clearance Holes
K - #4-40 Threaded Inserts
P - Side Mounting (For Right Angle)

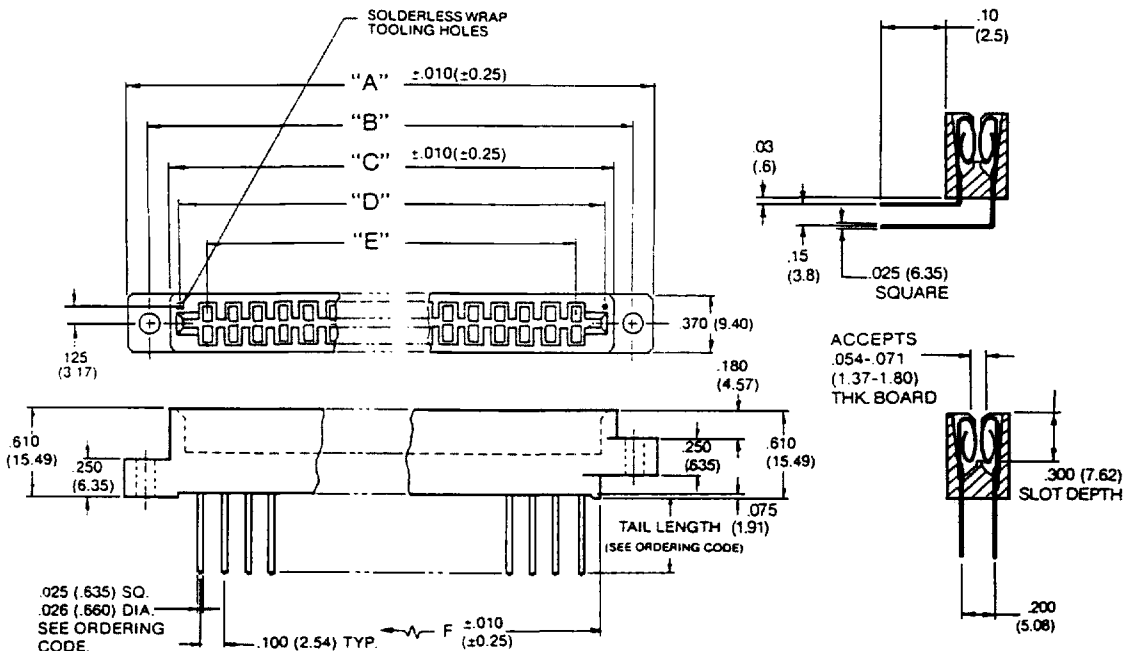
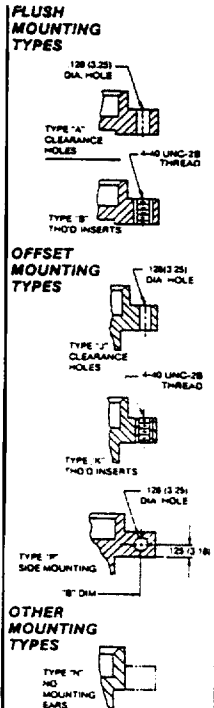
Other

N - No Mounting Ears

Contact Material and Finish

01 - Phos. Brz. - .000010" Gold over Nickel
03 - Phos. Brz. - .000030" Gold over Nickel
33 - Phos. Brz. - .000030" Selective Gold*, over Nickel
83 - Phos. Brz. - .000030" Selective Gold*, tin-lead
on tail, over Nickel

*Selective Gold is on the male/female engaging area.



4300 "H" Street • Philadelphia, PA 19124

1-800-eby-3430; (215) 537-4700; Fax: (215) 537-4780