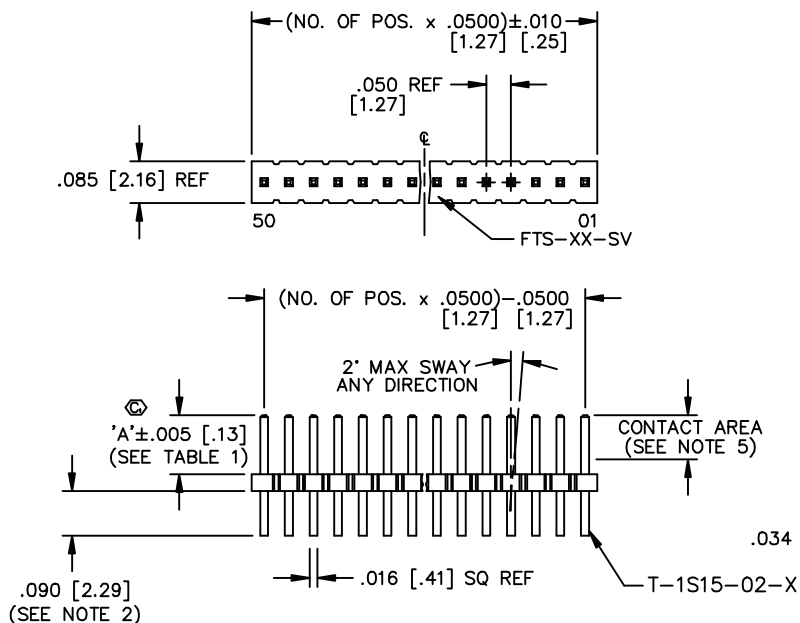


FIG. 1



DIMENSIONS ARE IN INCHES UNLESS OTHERWISE NOTED TOLERANCES ARE:
 ONE PLACE DECIMALS ±.1[2.5] THREE PLACE DECIMALS ±.005[.13] ANGLES ± 2°
 TWO PLACE DECIMALS ±.01[.25] FOUR PLACE DECIMALS ±.0020[.051]

TITLE: .050 C.L. LOW PROFILE TERMINAL STRIP ASSEMBLY

DWG NO: FTS-1XX-XX-X-XX SHEET 1 OF 1

FTS-1XX-XX-X-XX

- NO. OF POSITIONS -02 THRU -50
- LEAD STYLE
 -01: .120 [3.05] POST HEIGHT
 -02: .075 [1.91] POST HEIGHT
 -03: .065 [1.65] POST HEIGHT
- TAIL OPTION
 -S: SINGLE ROW THROUGH HOLE (SEE FIG. 1)
 -SV: SINGLE ROW VERTICAL SURFACE MOUNT (SEE FIG. 2)
- PLATING
 -L: LIGHT SELECTIVE (USE T-1SXX-XX-L)
 -F: FLASH SELECTIVE (USE T-1SXX-XX-F)
 -H: HEAVY GOLD (USE T-1SXX-XX-H)

TABLE 1

LEAD STYLE	'A'
-01	.120 [3.05]
-02	.075 [1.91]
-03	.065 [1.65]

- NOTES:
 1. PARTS MAY BE CUT TO POSITION.
 2. SHEAR TAILS TO DIMENSION SHOWN.
 3. MEASURED AT BEND RADIUS, NOT AT END OF PIN.
 4. TUBE ONLY -05 THROUGH -50 POSITIONS; LAYER PACKAGE -02 THROUGH -04 POSITIONS.
 5. GOLD PLATING TO BE ON POST, TIN PLATING TO BE ON TAIL.
 6. (Ⓢ) REPRESENTS A CRITICAL DIMENSION.
 7. MAXIMUM CUT FLASH: .015 [0.38].
 8. USE T-1S26-03-X FOR MACHINE FILL AND T-1S15-03-XX FOR HAND FILL.
 9. MINIMUM PIN RETENTION TO BE .5 LB
 10. FILL BODY SO THAT THE LEAD IN OF THE CORE IS ON THE TAIL SIDE.

FIG. 2

(DIFFERENT AS SHOWN, OTHERWISE SAME AS FIG. 1)

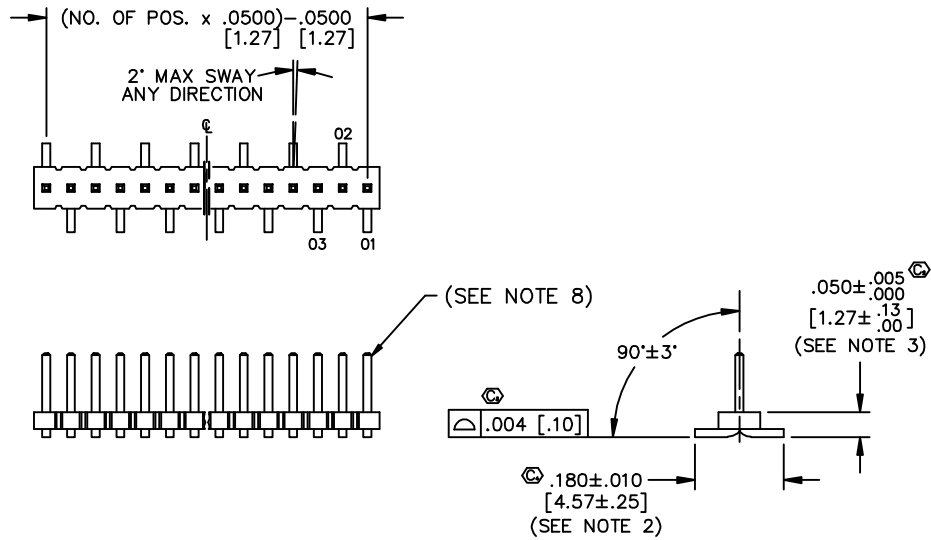
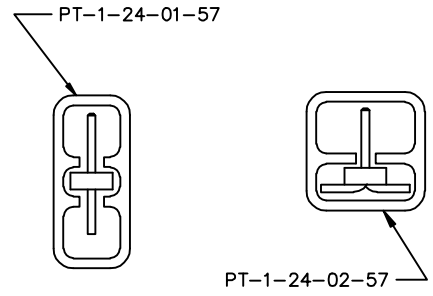


FIG. 3

(SEE NOTE 4)

TABLE 2

TAIL OPTION	TUBE	PLUG
-S	PT-1-24-01-57	TP-27
-SV	PT-1-24-02-57	TP-12



MATERIAL:
 BODY: VECTRA E130
 COLOR: BLACK
 TERMINAL:
 PHOS BRONZE
 MAX FLASH ALLOWED:
 .002 [.05]
 MAX GATE VESTIGE ALLOWED:
 .002 [.05]

PLOT SCALE: 1 = .2
 EXISPROD\ASSEMBLY\050 FTS-SASM

 520 PARK EAST BLVD. NEW ALBANY, INDIANA 47150
 PHONE (812) 944-6733 P.O. BOX 1147
 CODE 55322

MADE BY: BRATCHER 6-8-95 FTS-1XX-XX-X-XX SHEET 1 OF 1

PROPRIETARY NOTE
 THIS DOCUMENT CONTAINS INFORMATION CONFIDENTIAL AND PROPRIETARY TO SAMTEC INC. AND SHALL NOT BE REPRODUCED OR TRANSMITTED IN ANY FORM OR BY ANY MEANS, ELECTRONIC OR MECHANICAL, INCLUDING PHOTOCOPYING, RECORDING, OR BY ANY INFORMATION STORAGE AND RETRIEVAL SYSTEM, WITHOUT THE EXPRESS WRITTEN CONSENT OF SAMTEC INC.