

# Battery Connectors

Battery Connectors are designed to eliminate the need for separate starting batteries on individual units of power driven equipment. The receptacle may be mounted on each unit and wired to the starting motor. While the plug with cable and battery, may be carried on a tractor, truck, or other portable or stationary source. This eliminates the need for batteries on each unit of equipment and save costly maintenance and replacement.

In addition, these connectors are used to connect auxiliary power equipment to electrical systems. This preserves the charge of aircraft batteries for any in-flight function.



## Mating Guide

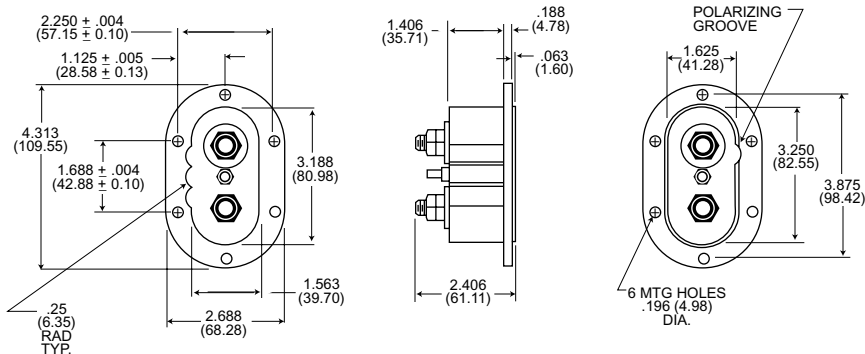
No. of Contacts	Current Rating (Cont)	Plugs			Receptacles		
		Part Number	Recommended Wire Size	Cable Entry or Terminal Dimension	Part Number	Recommended Wire Size	Cable Entry or Terminal Dimension
2	250a	<b>GB-3-21CFS</b>	#3/0	5/8" dia.	<b>GB-3-34CDS</b>	#1/0	3/8-24UNF-2A
1	40a		#10	1/8" dia.		#10	10-32NF-2A
		<b>GB-3-21CF</b>	#3/0	5/8" dia.			
			#10	1/8" dia.			
2	200a	<b>CA2551C</b> (017193-0015)	#1/0	3/4" dia.	<b>CE9310-8</b>	#2/0 #12	3/8-16UNF-2A 10-32NF-2A
1	35a		#12				
2	200a	<b>CA2551C</b> Model A (017193-0115)	#1/0	51/64" dia.			
1	35a		#12				
2	250a	<b>CA2551D</b> (017193-0008)	#2/0	3/4" dia.			
1	35a		#12				
2	250a	<b>CA2551D</b> Model A (017193-0108)	#2/0	15/16" dia.			
1	35a		#12				
2	400a	<b>CA2551E</b> (017193-0000)	#4/0	15/16" dia.			
1	40a		#10				
2	400a	<b>CA2551E</b> Model A (017193-0100)	#4/0	1-3/64" dia.			
1	40a		#10				
2	600a*	<b>CA11751-1</b>	#2/0	5/16-18UNC-2B	<b>CA11749-1</b>	#2/0	5/16-18UNC-2B
4	200a	<b>CE9183-1</b>	#1/0	27/32" dia.	<b>CE9310-10</b>	#1/0 #12	11/16
2	35a		#12				
4	200a	<b>CE9183-4</b>	#1/0	45/64" dia.			
2	35a		#12	1 entry, 5/8" dia.			
4	200a	<b>CE9183-6</b>	#1/0	27/32" dia.			
2	35a		#12	1 entry, 25/32" dia.			
1	250a	<b>AA-BP</b>	#2/0	5/16-18UNC-2B	<b>AA-BR</b>	#2/0	3/8-16UNC-2A
1	250a	<b>C5-2</b>	#2/0	5/16-18UNC-2B	<b>C5-1</b>	#2/0	5/16-18UNC-2A

\* Amperage rating of 600 amp is based on a maximum of 2 hours continuous service or before temperature rise of 120°C over 25°C ambient is reached.

## Receptacles

**GB-3-34CDS**

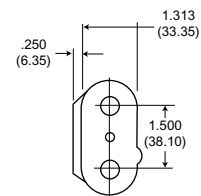
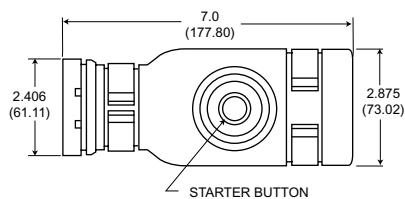
<b>Shell:</b>	Aluminum alloy-Cadmium plate
<b>Insulation:</b>	Phenolic
<b>Weight:</b>	1.031 lb.
<b>Contact Data:</b>	Copper alloy-Silver plate 2-250a - #1/0 wire • .375 (9.52)-24 T.P.I. Stud 1-40a - #10 wire • .313 (7.95) T.P.I Stud Top contact insulated from shell; two lower contacts grounded to shell.



# Battery Connectors

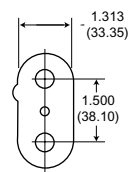
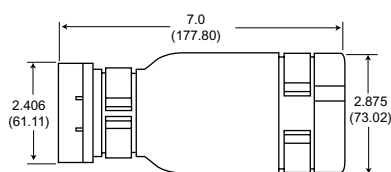
## Plugs (Continued)

GB-3-21-CFS



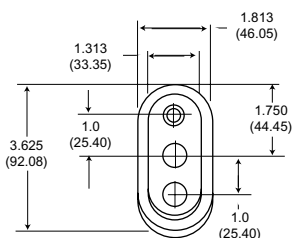
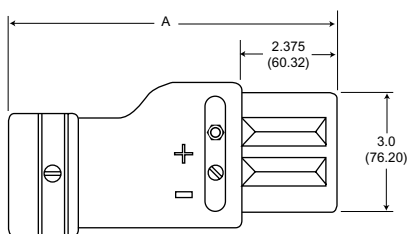
<b>Shell:</b>	Molded rubber
<b>Clip:</b>	Spring Steel•Cadmium plate
<b>Weight:</b>	1.116 lb.
<b>Contact Data:</b>	Copper alloy•Silver plate 2-250a- #3/0 wire•Cable entry .750 (19.05) 1-40a-#10 wire•Cable entry .266 (6.76)

GB-3-21-CF



<b>Shell:</b>	Molded rubber
<b>Wheel:</b>	Spring Steel•Cadmium plate
<b>Weight:</b>	1.050 lb.
<b>Contact Data:</b>	Copper alloy•Silver plate 2-250a- #3/0 wire•Cable entry .750 (19.05) 1-40a-#10 wire•Cable entry .266 (6.76)

CA2551



<b>Shell:</b>	Molded rubber
<b>Clip:</b>	Spring steel•Cadmium plate
<b>Weight:</b>	Consult factory
<b>Contact Data:</b>	Copper alloy•Silver plate

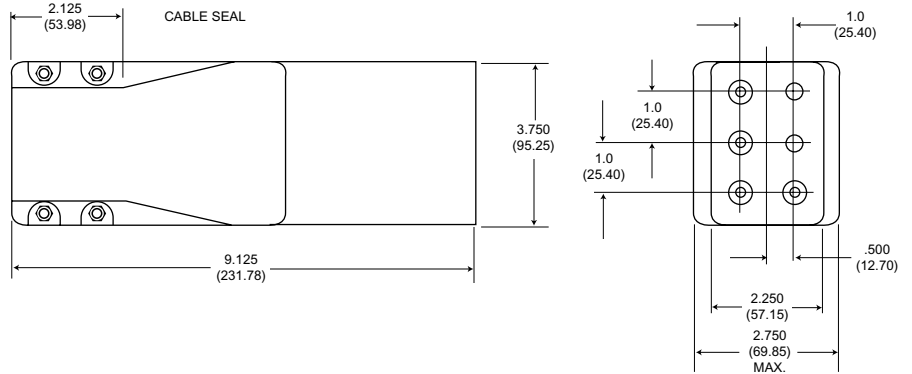
Type	Part Number	Number of Contacts	Wire Size	Current (Amps)	A	Cable Entry
CA2551C	017193-0015	2	#1/0	200	7.000 (177.80)	.750 (19.05)
CA2551C	017193-0115	2	#1/0	200	8.125 (206.38)	.797 (20.24)
Model A		1	#12	35		
CA2551C	017193-1000	2	#1/0	200	8.125 (206.38)	.938 (23.83)
Model A		1	#12	35		
CA2551D	017193-0008	2	#2/0	250	7.000 (177.80)	.750 (19.05)
		1	#12	35		
CA2551D	017193-0108	2	#2/0	250	8.125 (206.38)	.938 (23.83)
Model A		1	#12	35		
CA2551E	017193-0000	2	#4/0	400	8.125 (206.38)	.938 (23.83)
		1	#10	40		
CA2551E	017193-0100	2	#4/0	400	8.125 (206.38)	1.047 (26.59)
Model A		1	#10	40		

# Battery Connectors

## Plugs (Continued)



CE9183

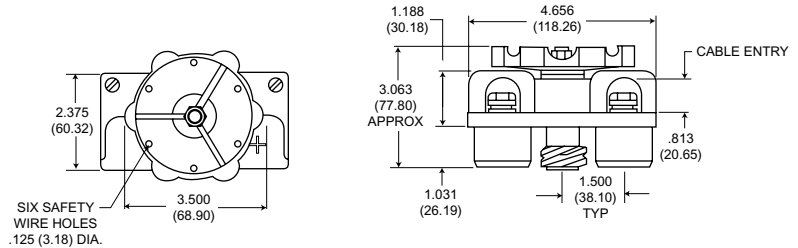


<b>Insulation:</b>	Rubber molded one-piece construction
<b>Cable Seals:</b>	Removable molded rubber
<b>Power Contacts:</b>	Removable snap in crimp or solder type
<b>Small Contacts:</b>	Molded into insulation with removable crimp or solder pots
<b>Extraction Tool:</b>	#317-8037-000 power contacts
<b>Insertion Tool:</b>	#317-8034-000 power contacts
<b>Insertion Tool:</b>	#317-8035-000 small contacts
<b>Contacts:</b>	Copper alloy, silver plate Brass, silver plate

Part Number	No. of Contacts	Wire Size	Current (Amps)	Cable Entry
CE9183-1	4	#1/0	200	.844 (21.44)
	2	#12	35	-
CE9183-4	4	#1/0	200	.703 (17.86)
	2	#12	35	1 entry .625 (15.88)
CE9183-6	4	#1/0	200	.844 (21.44)
	2	#12	35	1 entry .781 (19.84)



CA11251-1



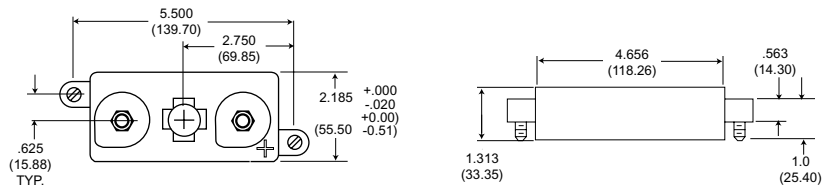
May be used on batteries conforming to MIL-B-6146.

<b>Shell:</b>	Molded phenolic
<b>Wheel:</b>	Aluminum alloy
<b>Weight:</b>	1.023 lb.
<b>Contact Data:</b>	Copper alloy 2-600a - #2/0 wire • Cable entry .813 (20.65)

## Receptacles



CA11749-1



<b>Shell:</b>	Aluminum alloy • Black acid-proof lacquer finished
<b>Weight:</b>	.380 lb.
<b>Contact Data:</b>	Copper alloy • 2-600a • #2/0 wire Pin contacts screw on battery • 5/16-18 T.P.I.

Amperage rating of 600 amp is based on a maximum of 2 hours continuous service or before temp. rise of 120° C over 25° C ambient is reached.