

- NOTES:
1. MAX ALLOWABLE BOW: .005 [1.13] INCH/INCH.
 2. HEIGHT VARIATION BETWEEN ANY TWO PINS SHALL BE .010 [2.5] MAX.
 3. TERMINAL PUSHOUT FORCE: 2 lbs. MIN.
 4. MAX PIN ROTATION IN BODY: 2°.
 5. C REPRESENTS A CRITICAL DIMENSION FOR
 6. FOR -S & -G PLATING, GOLD WILL BE ON CONTACT AREA.
 7. CUT FLASH .010 [2.5] MAX
 8. TUBE POSITIONS -07 THRU -50. POSITIONS -01 THRU -06 ARE TO BE LAYER PACKAGED.
 9. FOR -D, USE DWM-50-D WHEN RAN ON BOARD STACKER AUTOMATION, HTMS-50-D FOR ALL OTHER PROCESSES. FOR -S, USE HTMS-50-S.

| | | | | | |
|------------------------------------|---|----------------------|--------|------------------------------------|-------------------------|
| UNLESS OTHERWISE NOTED | | TOLERANCES ARE: | TITLE: | HI-TEMP BOARD SPACING MICRO STRIPS | DWG NO: |
| ONE PLACE DECIMALS $\pm .1$ [2.5] | THREE PLACE DECIMALS $\pm .005$ [1.13] | ANGLES $\pm 2^\circ$ | | | HDWM-XX-XX-XX-X-XXX-XXX |
| TWO PLACE DECIMALS $\pm .01$ [3.0] | FOUR PLACE DECIMALS $\pm .0020$ [0.051] | | | | SHEET 1 OF 1 |

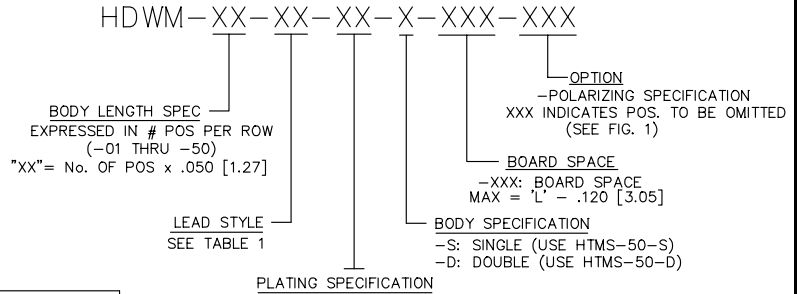
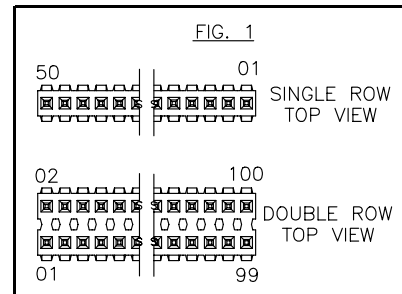
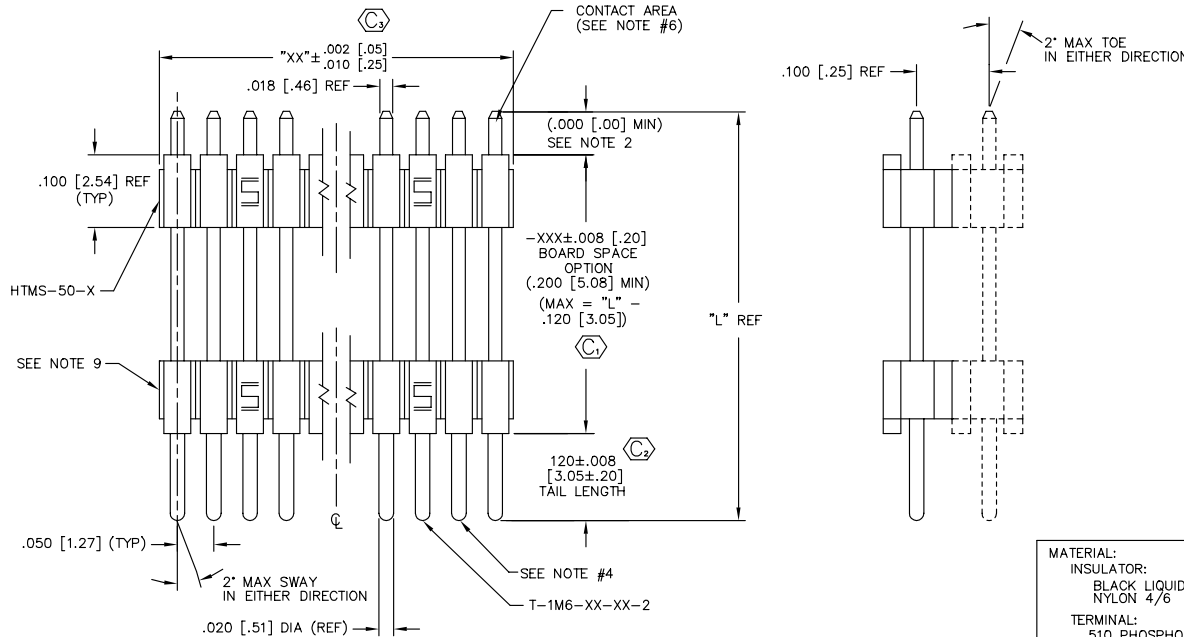


TABLE 1

PACKAGING (7 POS MIN.)

| LEAD STYLE | TERMINAL SPEC. | 'L' | 'L' - .120 [3.05] BOARD SPACE MAX (REF) | PACKAGING (7 POS MIN.) | |
|------------|----------------|---------------|---|-------------------------|-------------------------|
| | | | | SINGLE ROW | DOUBLE ROW |
| -01 | T-1M6-18-XX-2 | .450 [11.43] | .330 [8.38] | PT-1-24-01-24 (2) TP-24 | PT-1-24-15-29 (2) TP-07 |
| -51 | T-1M6-02-XX-2 | .410 [10.41] | .290 [7.37] | PT-1-24-02-48 (2) TP-03 | PT-1-24-15-29 (2) TP-07 |
| -52 | T-1M6-12-XX-2 | .425 [10.80] | .305 [7.75] | PT-1-24-02-48 (2) TP-03 | PT-1-24-15-29 (2) TP-07 |
| -53 | T-1M6-04-XX-2 | .505 [12.83] | .385 [8.78] | PT-1-24-01-46 (2) TP-24 | PT-1-24-15-29 (2) TP-07 |
| -54 | T-1M6-14-XX-2 | .555 [17.10] | .435 [11.05] | PT-1-24-02-48 (2) TP-03 | PT-1-24-15-29 (2) TP-07 |
| -55 | T-1M6-03-XX-2 | .610 [15.49] | .490 [12.45] | PT-1-24-01-47 (2) TP-24 | PT-1-24-15-29 (2) TP-07 |
| -56 | T-1M6-13-XX-2 | .625 [15.88] | .505 [12.83] | PT-1-24-01-47 (2) TP-24 | PT-1-24-15-29 (2) TP-07 |
| -57 | T-1M6-19-XX-2 | .650 [16.51] | .530 [13.46] | PT-1-24-01-30 (2) TP-03 | PT-1-24-15-29 (2) TP-07 |
| -58 | T-1M6-05-XX-2 | .705 [17.91] | .585 [14.86] | PT-1-24-01-47 (2) TP-24 | PT-1-24-01-51 (2) TP-13 |
| -59 | T-1M6-15-XX-2 | .755 [19.18] | .635 [16.13] | PT-1-24-01-47 (2) TP-24 | PT-1-24-16-29 (2) TP-07 |
| -60 | T-1M6-16-XX-2 | .825 [20.96] | .705 [17.91] | PT-1-24-01-47 (2) TP-24 | PT-1-24-02-51 (2) TP-13 |
| -61 | T-1M6-28-XX-2 | 1.050 [26.67] | .930 [23.62] | PT-1-24-03-47 (2) TP-03 | PT-1-24-08-03 (2) TP-07 |



MATERIAL:
INSULATOR:
BLACK LIQUID CRYSTAL POLYMER OR NYLON 4/6

TERMINAL:
510 PHOSPHOR 3/4 HARD BRONZE
TENSILE RANGE 96 - 115 KSI
MATERIAL THICKNESS: .0180 \pm .0003

EXISPROD\ASSEMBLY\050 HDWM-ASM

samtec

520 PARK EAST BLVD. NEW ALBANY, INDIANA 47150
PHONE (812) 944-6733 P.O. BOX 1147
CODE 55322

MADE BY: GREG REIDINGER 8-3-92

HDWM-XX-XX-XX-X-XXX-XXX
SHEET 1 OF 1

PROPRIETARY NOTE
THIS DOCUMENT CONTAINS INFORMATION CONFIDENTIAL AND PROPRIETARY TO SAMTEC INC. AND SHALL NOT BE REPRODUCED OR TRANSMITTED TO OTHER DOCUMENTS OR USED TO OTHERS OR USED FOR ANY PURPOSE OTHER THAN THAT FOR WHICH IT WAS OBTAINED WITHOUT THE EXPRESS WRITTEN CONSENT OF SAMTEC INC.