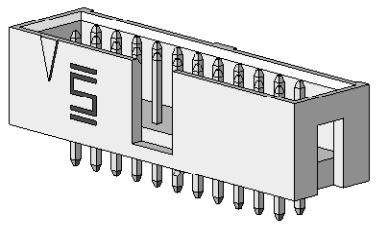


DO NOT SCALE FROM THIS PRINT



HTST-1XX-XX-XX-D-XX-XX

**No OF POSITIONS**  
 -02 (STRAIGHT ONLY)  
 -03 THRU -18, -20, -24, -25, -28, -30, -32 & -36

**POLARIZATION OPTION**  
 -XX: INDICATES POSITION OMITTED

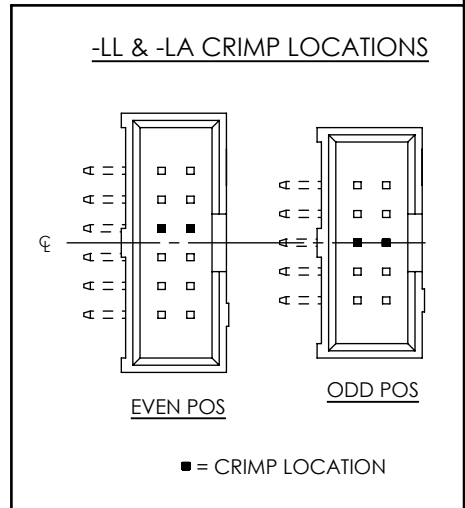
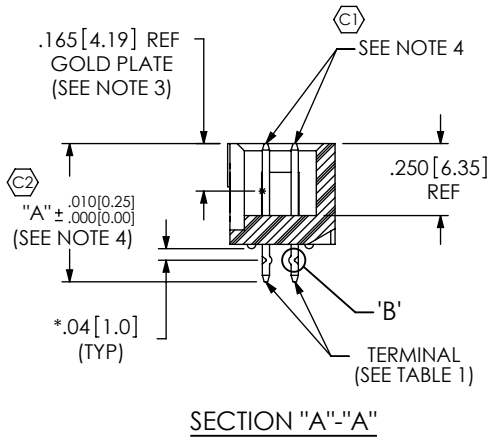
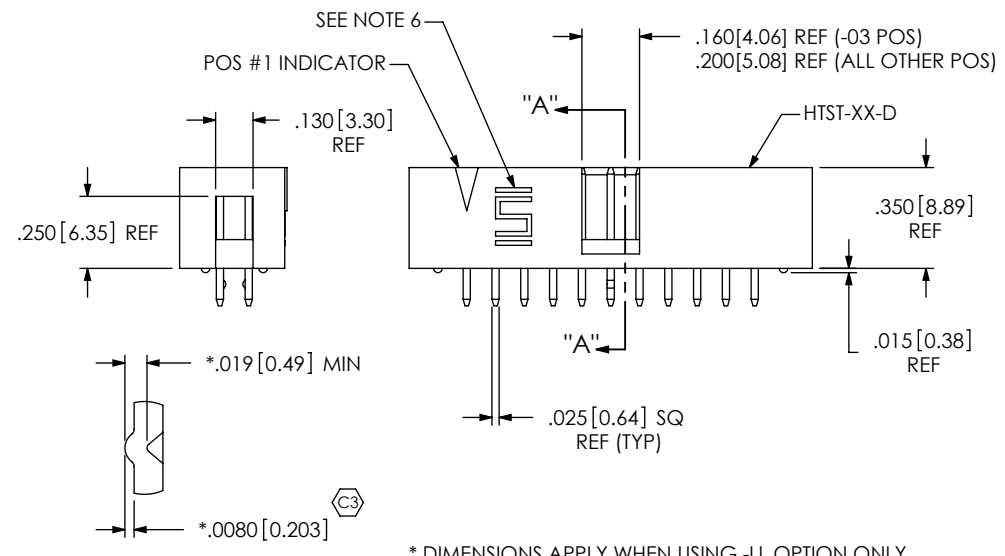
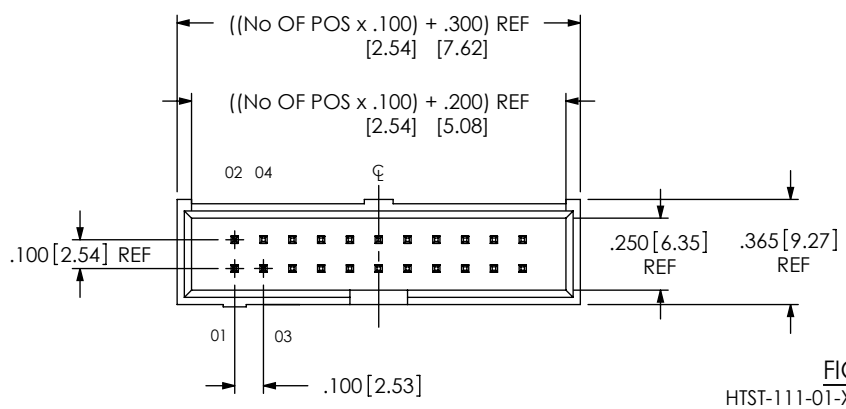
**OPTION**  
 BLANK: STRAIGHT (STYLES -04 & -05 N/A)  
 -RA: RIGHT ANGLE (STYLES -01, -02 & -03 N/A)  
 -LL: LOCKING LEAD (STRAIGHT ONLY)  
 -LA: -RA OPTION WITH -LL OPTION

**LEAD STYLE**  
 SEE TABLE 1 & TABLE 2

**ROW SPECIFICATION**  
 -D: DOUBLE ROW  
 (USE HTST-XX-D)

**PLATING SPECIFICATION**

-G: GOLD - .000010 Au (CONTACT AREA) OVER .000050 Ni  
 -T: TIN - .000200 Sn OVER .000050 Ni  
 -S: SELECTIVE - .000030 Au (CONTACT AREA) OVER .000050 Ni  
 -L: LIGHT SELECTIVE - .000010 Au (CONTACT AREA),  
 .000200 Sn ON TAIL, OVER .000050 Ni  
 -H: HEAVY GOLD - .000030 Au (CONTACT AREA) OVER .000050 Ni  
 -F: FLASH SELECTIVE - .000003 Au (CONTACT AREA),  
 .000200 Sn ON TAIL, OVER .000050 Ni  
 -P: GOLD FLASHED PALLADIUM NICKEL - .000003 Au OVER .000030 PdNi  
 (CONTACT AREA), .000150 Sn ON TAIL, OVER .000050 Ni  
 -TM: MATTE TIN - .00010 TO .00030 MATTE TIN OVER .000050 TO .00012 Ni  
 -SM: SELECTIVE HEAVY GOLD, MATTE TIN TAIL - (SEE -S, & -TM)  
 -FM: FLASH SELECTIVE GOLD, MATTE TIN TAIL - (SEE -F, & -TM)  
 -LM: SELECTIVE LIGHT GOLD, MATTE TIN TAIL - (SEE -L, & -TM)



\* DIMENSIONS APPLY WHEN USING -LL OPTION ONLY

- NOTES:
1. C1 REPRESENTS A CRITICAL DIMENSION.
  2. TERMINAL PUSHOUT FORCE: 3 lbs.
  3. ASSEMBLE GOLD PLATED END AS SHOWN.
  4. TERMINALS TO BE FLUSH TO .010 [0.25] BELOW TOP OF SHROUD.

LEAD STYLE	"A"	TERMINAL
-01	.480 [12.19]	T-1S6-17-XX-2
-02	.530 [13.46]	T-1S6-08-XX-2
-03	.930 [23.62]	T-1S6-11-XX-2

UNLESS OTHERWISE SPECIFIED, DIMENSIONS ARE IN INCHES.  
 TOLERANCES ARE:  
 DECIMALS ANGLES  
 .XX: ±.01 [.3] 2°  
 .XXX: ±.005 [.13]  
 .XXXX: ±.0020 [.051]

**PROPRIETARY NOTE**  
 THIS DOCUMENT CONTAINS INFORMATION CONFIDENTIAL AND PROPRIETARY TO SAMTEC, INC. AND SHALL NOT BE REPRODUCED OR TRANSFERRED TO OTHER DOCUMENTS OR DISCLOSED TO OTHERS OR USED FOR ANY PURPOSE OTHER THAN THAT WHICH IT WAS OBTAINED WITHOUT THE EXPRESSED WRITTEN CONSENT OF SAMTEC, INC.

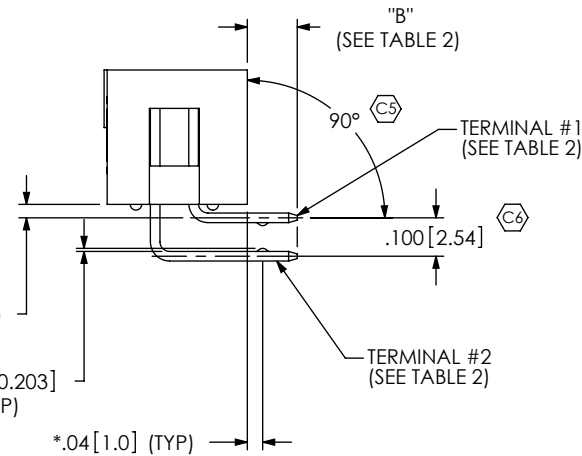
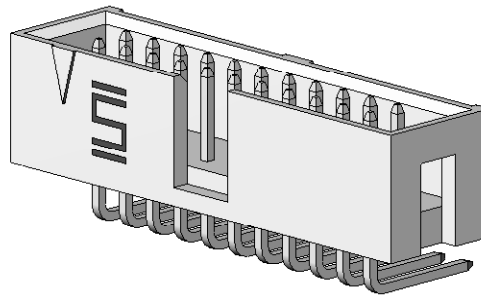
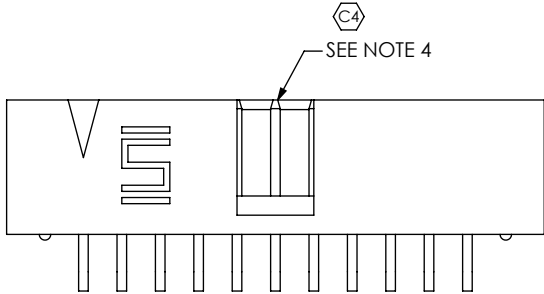
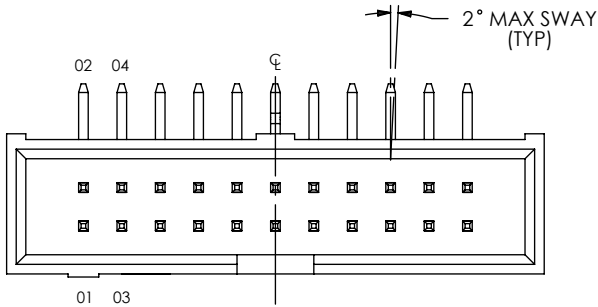
**MATERIAL:** DO NOT SCALE DRAWING SHEET SCALE: 1.5:1  
 INSULATOR: ZENITE 5145, COLOR: NATURAL  
 ALTERNATE MATERIAL: VECTRA V143LC  
 COLOR: NATURAL  
 TERMINAL: PHOS BRONZE

520 PARK EAST BLVD, NEW ALBANY, IN 47150  
 PHONE: 812-944-6733 FAX: 812-948-5047  
 e-Mail: info@SAMTEC.com code: 55322

DESCRIPTION:  
**HIGH TEMP TOP SHROUD TERMINAL STRIP**  
 DWG. NO.  
**HTST-1XX-XX-XX-D-XX-XX**  
 BY: BRATCHER 01/16/04 SHEET 1 OF 2

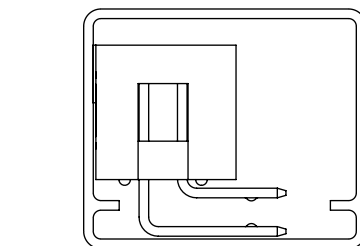
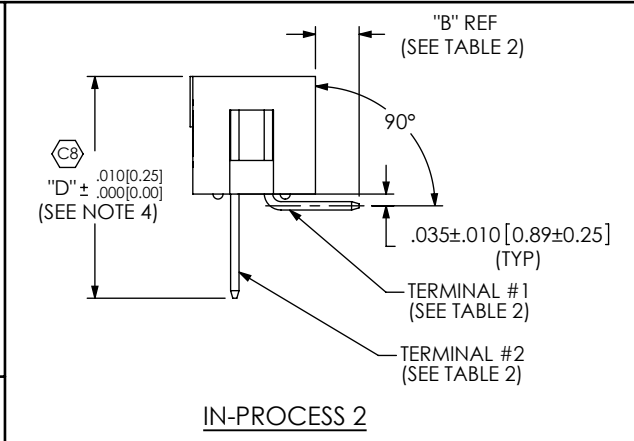
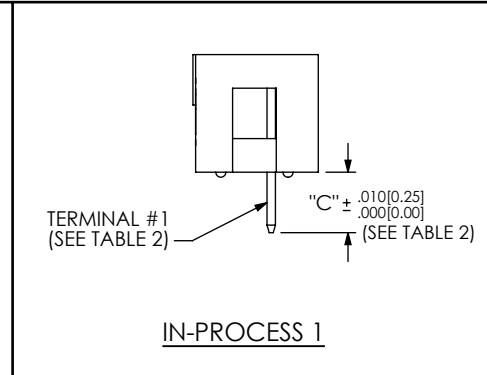
FIG. 2

-RA & -LA OPTIONS  
(HTST-111-04-XX-D-LA SHOWN)  
(SAME AS FIG. 1, UNLESS OTHERWISE STATED)



\* DIMENSIONS APPLY WHEN USING -LA OPTION ONLY

C7 \* .0080 [0.203] (TYP)



TUBE PACKAGING VIEW FOR 04 & 05 LEAD STYLES

Packaging Table			
Lead Style	Packaging	TUBES	PLUG
-01	Bulk	N/A	N/A
-02	Bulk	N/A	N/A
-03	Bulk	N/A	N/A
-04	Tube	PT-1-24-12T-109	TP-28
-05	Tube	PT-1-24-12T-109	TP-28

TABLE 2

LEAD STYLE	"B"	"C" (NO RA REPRESS)	"C" (WITH RA REPRESS)	"D"	TERMINAL #1	TERMINAL #2
-04	.130[3.30]	.280[7.11]	.350[8.89]	.830[21.08]	T-1S6-15-XX-2	T-1S6-10-XX-2
-05	.230[5.84]	.380[9.65]	.450[11.43]	.930[23.62]	T-1S6-09-XX-2	T-1S6-11-XX-2

PROPRIETARY NOTE  
THIS DOCUMENT CONTAINS INFORMATION CONFIDENTIAL AND PROPRIETARY TO SAMTEC, INC. AND SHALL NOT BE REPRODUCED OR TRANSFERRED TO OTHER DOCUMENTS OR DISCLOSED TO OTHERS OR USED FOR ANY PURPOSE OTHER THAN THAT WHICH IT WAS OBTAINED WITHOUT THE EXPRESSED WRITTEN CONSENT OF SAMTEC, INC.

DO NOT SCALE DRAWING

SHEET SCALE: 2:1



520 PARK EAST BLVD, NEW ALBANY, IN 47150  
PHONE: 812-944-6733 FAX: 812-948-5047  
e-Mail: info@SAMTEC.com code: 55322

DESCRIPTION:  
HIGH TEMP TOP SHROUD TERMINAL STRIP

DWG. NO.  
HTST-1XX-XX-XX-D-XX-XX

BY: BRATCHER 01/16/04 SHEET 2 OF 2