

# ANSLEY® OPEN-FRAME DIP SOCKETS

## Description/Application

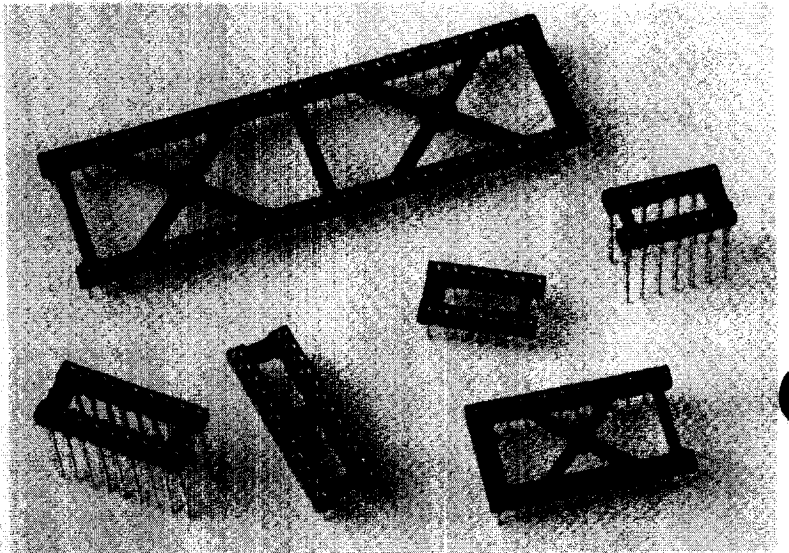
Ansley® Open-Frame DIP Sockets provide reliable interconnection for a wide variety of dual in-line packaged devices in PCB applications where frequent removal and replacement of DIP devices is required.

## Design Considerations

- Available in 6, 8, 14, 16, 18, 20, 22, 24, 28, 32, 36, 40, 48 and 64 positions
- Available in two solder-tail lengths and two wrap-post lengths
- Extremely low-profile frame: 2.29mm (.090") thick
- Accepts .28mm x .46mm (.011" x .018") rectangular and .40mm (.016") to .53mm (.021") diameter round IC leads, in lengths from 2.54mm (.100") to 3.94mm (.155")
- Open-frame construction with reinforcing "X" supports in .100" x .600" and .100" x .900" styles
- Open-frame construction optimizes cleaning, visibility for inspection, airflow and heat dissipation
- End-to-end and side-to-side stacking for maximum I.C. packaging density

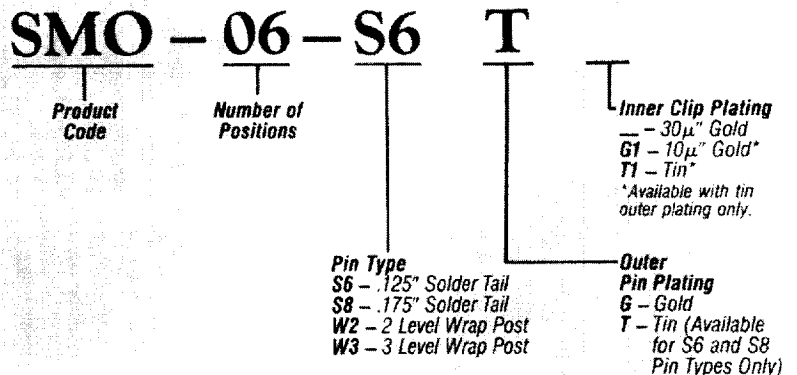
<b>OUTER SLEEVE</b>	BRASS BASE MATERIAL PER QQB-626-B GOLD PLATING PER MIL G-45204B OVER NICKEL PER QQN-290
<b>TIN PLATING</b>	PER MIL T10727
<b>CONTACT MATERIAL</b>	HEAT TREATED BERYLLIUM COPPER PER QQC-533 GOLD PLATING PER MIL G-45204B OVER NICKEL PER QQN-290
<b>INSULATOR</b>	GLASS FILLED THERMOPLASTIC UL94V-0 RECOGNIZED

Open-frame, low-profile design for  
maximum airflow and heat dissipation;  
screw-machined sleeves



## Standard Product Options

The information below provides a general overview of this product family. For complete ordering information, please consult the following page.



**SMO-243-XXX-24 Position Skinny DIP Socket**

# ANSLEY\* OPEN-FRAME DIP SOCKETS

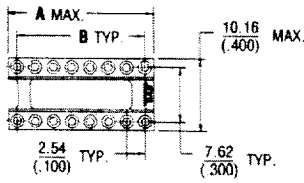


FIGURE 1

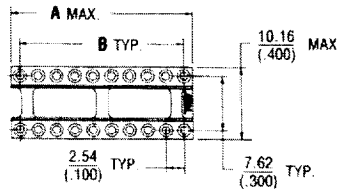


FIGURE 2

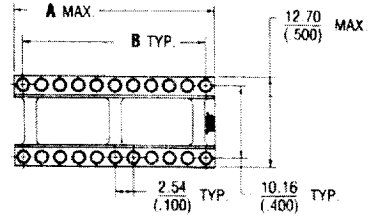


FIGURE 3

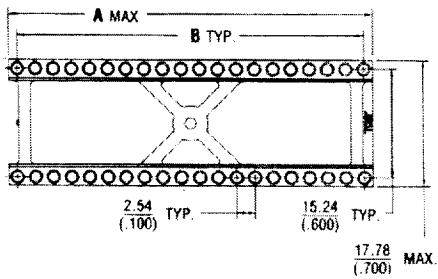


FIGURE 4

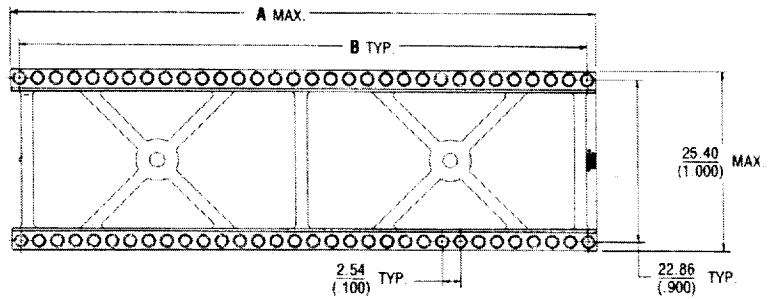
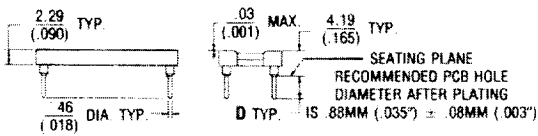


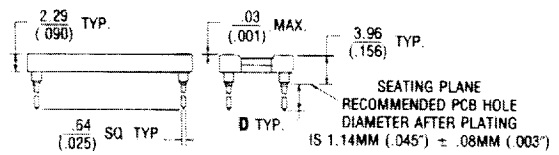
FIGURE 5



SIDE VIEW

END VIEW

TYPICAL SOLDER-TAIL PIN



SIDE VIEW

END VIEW

TYPICAL WRAP-POST PIN

CAT. NO.				NO. OF POS.	FIG. NO.	DIMENSIONS	
TAIL LENGTH (SEE DIMENSION "D")						A	B
3.18(.125)	4.45(.175)	10.39(.409)	13.87(.546)				
SOLDER TAILS		WRAP POST TAILS					
		LEVEL 2	LEVEL 3				
SMO-06-S6XXX	SMO-06-S8XXX	SMO-06-W2G	SMO-06-W3G	6	1	7.62(.300)	5.08(.200)
SMO-08-S6XXX	SMO-08-S8XXX	SMO-08-W2G	SMO-08-W3G	8	1	10.16(.400)	7.62(.300)
SMO-14-S6XXX	SMO-14-S8XXX	SMO-14-W2G	SMO-14-W3G	14	1	17.78(.700)	15.24(.600)
SMO-16-S6XXX	SMO-16-S8XXX	SMO-16-W2G	SMO-16-W3G	16	1	20.32(.800)	17.78(.700)
SMO-18-S6XXX	SMO-18-S8XXX	SMO-18-W2G	SMO-18-W3G	18	1	22.86(.900)	20.32(.800)
SMO-20-S6XXX	SMO-20-S8XXX	SMO-20-W2G	SMO-20-W3G	20	2	25.40(1.000)	22.86(.900)
SMO-22-S6XXX	SMO-22-S8XXX	SMO-22-W2G	SMO-22-W3G	22	3	27.94(1.100)	25.40(1.000)
SMO-243-S6XXX	SMO-243-S8XXX	SMO-243-W2G	SMO-243-W3G	24	2	30.48(1.200)	27.94(1.100)
SMO-24-S6XXX	SMO-24-S8XXX	SMO-24-W2G	SMO-24-W3G	24	4	30.48(1.200)	27.94(1.100)
SMO-28-S6XXX	SMO-28-S8XXX	SMO-28-W2G	SMO-28-W3G	28	4	35.56(1.400)	33.02(1.300)
SMO-32-S6XXX	SMO-32-S8XXX	SMO-32-W2G	SMO-32-W3G	32	4	40.64(1.600)	38.10(1.500)
SMO-36-S6XXX	SMO-36-S8XXX	SMO-36-W2G	SMO-36-W3G	36	4	45.72(1.800)	43.18(1.700)
SMO-40-S6XXX	SMO-40-S8XXX	SMO-40-W2G	SMO-40-W3G	40	4	50.80(2.000)	48.25(1.900)
SMO-48-S6XXX	SMO-48-S8XXX	SMO-48-W2G	SMO-48-W3G	48	4	60.96(2.400)	58.42(2.300)
SMO-64-S6XXX	SMO-64-S8XXX	SMO-64-W2G	SMO-64-W3G	64	5	81.28(3.200)	78.74(3.100)

NOTE: X denotes plating options.

DIMENSIONS ARE SHOWN IN mm/(inches)