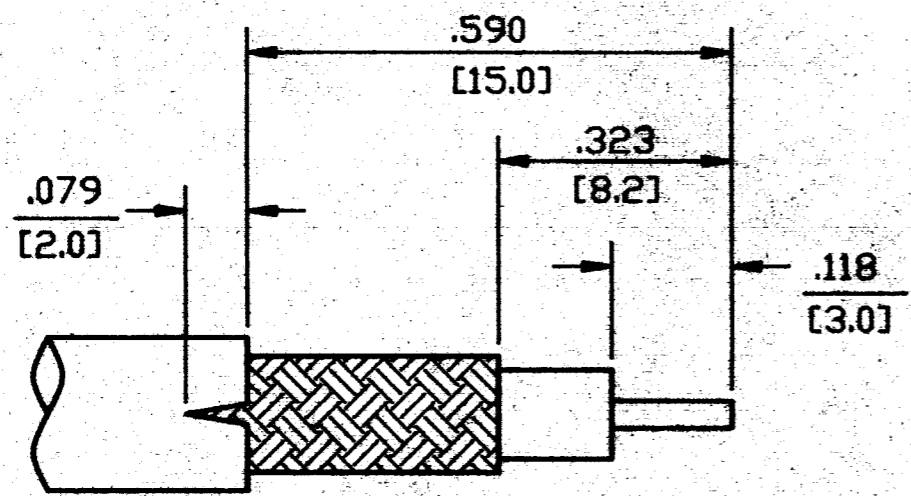
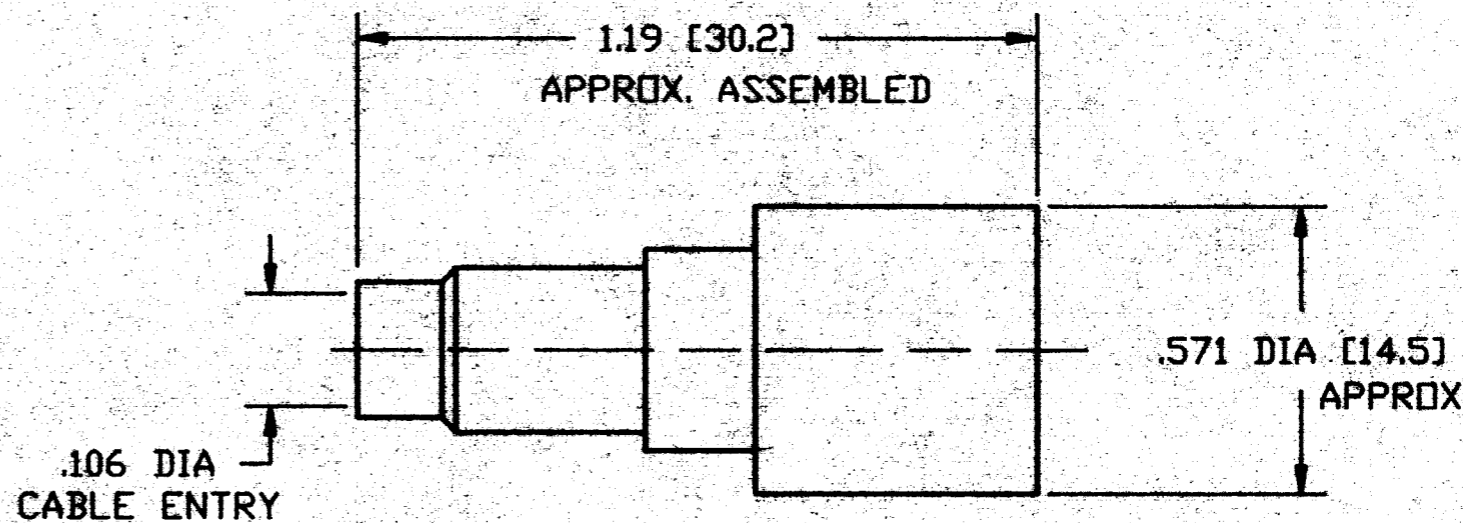


DO NOT SCALE THIS DRAWING

31-2315-RFX		REVISIONS			
DRAWING NUMBER	SYM	DESCRIPTION	DATE	E.C.O. NO.	APPR.
	A	OFFICIAL ENG. RELEASE TO MFG.	10/2/91	38063	02



RECOMMENDED CABLE STRIPPING DIM'S



NOTES:

1. BRASS BODY, NICKEL PLATED.
2. DELRIN & TEFLON INSULATORS.
3. GOLD PLATED, BRASS CONTACT, .000003.
4. PACKAGED IN BAG 999-355.
5. USE AMPHENOL CRIMP TOOL #CTL-2.
6. NON-CAPTIVATED CONTACT, .023 WIRE ENTRY.
7. 3 PC. (BODY, FERRULE, CONTACT).

H:\DEPT611\TNC\031\ASSY\2315RFX

ENGLISH [METRIC]

PART NO.	QUAN	UOM	ITEM LINE NO	DESCRIPTION	CODE	FINISH
LIST OF MATERIAL						

REMOVE ALL BURRS, BREAK CORNERS AND SHARP EDGES .005 MAXIMUM UNLESS OTHERWISE SPECIFIED.

NOTICE - These drawings, specifications, or other data (1) are, and remain the property of Amphenol Corp. (2) must be returned upon request; and (3) are confidential and are not to be disclosed to any person other than those to whom they are given by Amphenol Corp. The furnishing of these drawings, specifications, or other data by Amphenol Corp., or by any other person to anyone for any purpose is not to be regarded by implication or otherwise as in any manner licensing, granting rights or permitting such holder or any other person to manufacture, use or sell any product, process or design, patented or otherwise, that may in any way be related to or disclosed by said drawings, specifications or other data.

NEXT ASSY	USED ON	UNLESS OTHERWISE SPECIFIED DIMENSIONS ARE IN INCHES. TOLERANCES NOT OTHERWISE SPECIFIED ARE: 2 PLACE DECIMAL ±.015 (0.381 mm) 3 PLACE DECIMAL ±.005 (0.127 mm) ANGLES ± 1°			DRAWN BY TERRI ALBERA DATE 4-22-91	TITLE TNC CRIMP CRIMP PLUG FOR RG-174, 188 & 316 CABLE, 50 OHM	Amphenol Corporation RF/Microwave Operations Danbury, Conn. U.S.A.	
MATERIAL		REFERENCE DRAWING NO. EAR 962370		CHECKED <i>[Signature]</i> DATE 9-13-91		SCALE NTS		SHEET OF
SPECIFICATION				ENGINEER <i>[Signature]</i> DATE 9-13-91				
FINISH				QUALITY ASSURANCE <i>[Signature]</i> DATE 9/19/91	CODE IDENTIFICATION 74868	DRAWING SIZE B		DRAWING NO. 31-2315-RFX

Design Products Co. Inc. Copyright © 1990