

**PLEASE CHECK WWW.MOLEX.COM FOR LATEST PART INFORMATION**

**Part Number:** **0191440018**  
**Status:** **Active**  
**Description:** InsulKrimp™ Spade Tongue Terminal for 14-16 AWG Wire

**Documents:**

[Drawing \(PDF\)](#) [RoHS Certificate of Compliance \(PDF\)](#)  
[Product Specification PS-19902-009 \(PDF\)](#)

**Agency Certification**

CSA LR18689  
 UL E32244

**General**

Product Family Ring and Spade Terminals  
 Series 19144  
 Crimp Quality Equipment Yes  
 Mil-Spec N/A  
 Product Name InsulKrimp™  
 Type Spade

**Physical**

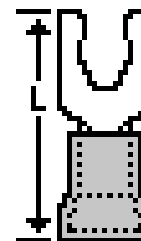
Barrel Type Closed  
 Color - Resin Natural  
 Flammability 94V-2  
 Insulation PVC  
 Material - Plating Mating Tin  
 Packaging Type Bag  
 Plating min: Mating (µin) 160  
 Plating min: Mating (µm) 4  
 Plating min: Termination (µin) 160  
 Plating min: Termination (µm) 4  
 Stud Size 5-6 (M3-3.5)  
 Termination Interface: Style Crimp or Compression  
 Wire Insulation Diameter 4.40mm (.175") max.  
 Wire Size AWG 14, 16  
 Wire Size mm² 1.30 - 2.00

**Material Info**

Old Part Number BB-224-06X

**Reference - Drawing Numbers**

Product Specification PS-19902-009  
 Sales Drawing SD-19144-001



Series  
 image - Reference only

**EU RoHS**

**ELV and RoHS Compliant**  
**REACH SVHC**  
 Not Reviewed  
**Halogen-Free Status**  
 Not Reviewed

**China RoHS**



**Need more information on product environmental compliance?**

Email [productcompliance@molex.com](mailto:productcompliance@molex.com)  
 For a multiple part number RoHS Certificate of Compliance, [click here](#)

Please visit the [Contact Us](#) section for any non-product compliance questions.

**Search Parts in this Series**

19144Series

**Application Tooling | FAQ**

*Tooling specifications and manuals are found by selecting the products below. Crimp Height Specifications are then contained in the Application Tooling Specification document.*

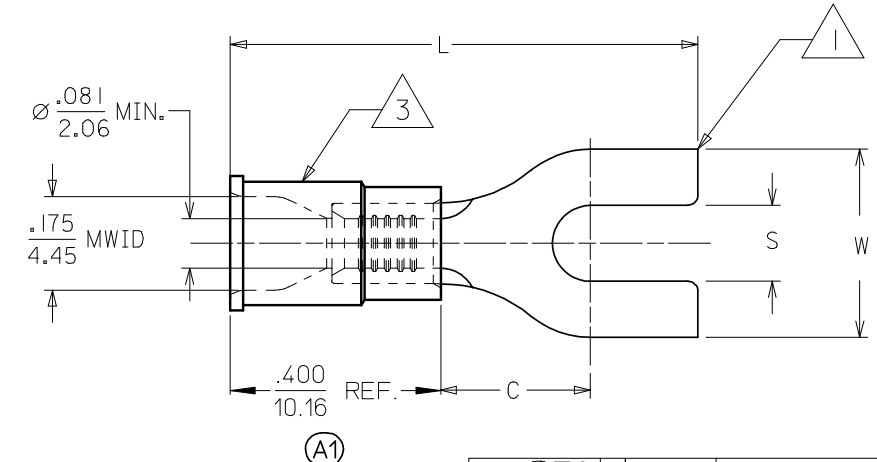
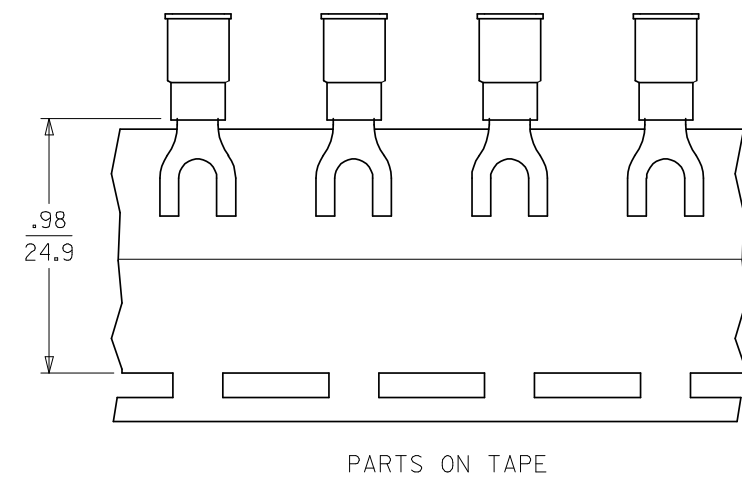
**Global**

| Description                                    | Product #                  |
|--|----------------------------|
| Hand Crimp Tool                                | <a href="#">0640010100</a> |
| Hand Crimp Tool                                | <a href="#">0640010300</a> |
| Hand Crimp Tool                                | <a href="#">0640011400</a> |
| Crimp Head for the AT-200™ Pneumatic Hand Tool | <a href="#">0640050100</a> |
| Crimp Head for the AT-200™ Pneumatic Hand Tool | <a href="#">0640050300</a> |
| Crimp Head for the AT-200™ Pneumatic Hand Tool | <a href="#">0640051400</a> |

This document was generated on 04/14/2010

**PLEASE CHECK [WWW.MOLEX.COM](http://WWW.MOLEX.COM) FOR LATEST PART INFORMATION**

| MATERIAL NUMBER | ALTERNATE NUMBER | STUD SIZE | "S" ±.005/(0.13) | "W" ±.010/(0.25) | "C" MIN (A1) | "L" MAX (A1) | PACKAGING    |
|-----------------|------------------|-----------|------------------|------------------|--------------|--------------|--------------|
| 191440013       | BB-207-04X       | 4         | .119/(3.02)      | .245/(6.22)      | .209/(5.31)  | .790/(20.07) | LOOSE PIECE  |
| 191440015       | BB-207-06X       | 6         | .146/(3.71)      | .245/(6.22)      | .209/(5.31)  | .790/(20.07) |              |
| 191440017       | BB-224-04X       | 4         | .119/(3.02)      | .295/(7.49)      | .211/(5.36)  | .789/(20.04) |              |
| 191440018       | BB-224-06X       | 6         | .146/(3.71)      | .295/(7.49)      | .211/(5.36)  | .789/(20.04) |              |
| 191440020       | BB-224-08X       | 8         | .173/(4.39)      | .295/(7.49)      | .211/(5.36)  | .789/(20.04) |              |
| 191440022       | BB-227-06X       | 6         | .146/(3.71)      | .362/(9.19)      | .269/(6.83)  | .912/(23.16) |              |
| 191440024       | BB-227-08X       | 8         | .173/(4.39)      | .388/(9.85)      | .269/(6.83)  | .912/(23.16) |              |
| 191440026       | BB-227-10X       | 10        | .198/(5.03)      | .388/(9.85)      | .269/(6.83)  | .912/(23.16) |              |
| 191440014       | BB-207-04XT      | 4         | .119/(3.02)      | .245/(6.22)      | .209/(5.31)  | .790/(20.07) | TAPE MOUNTED |
| 191440016       | BB-207-06XT      | 6         | .146/(3.71)      | .245/(6.22)      | .209/(5.31)  | .790/(20.07) |              |
| 191440063       | BB-224-04XT      | 4         | .119/(3.02)      | .295/(7.49)      | .211/(5.36)  | .789/(20.04) |              |
| 191440019       | BB-224-06XT      | 6         | .146/(3.71)      | .295/(7.49)      | .211/(5.36)  | .789/(20.04) |              |
| 191440021       | BB-224-08XT      | 8         | .173/(4.39)      | .295/(7.49)      | .211/(5.36)  | .789/(20.04) |              |
| 191440023       | BB-227-06XT      | 6         | .146/(3.71)      | .362/(9.19)      | .269/(6.83)  | .912/(23.16) |              |
| 191440025       | BB-227-08XT      | 8         | .173/(4.39)      | .388/(9.85)      | .269/(6.83)  | .912/(23.16) |              |
| 191440027       | BB-227-10XT      | 10        | .198/(5.03)      | .388/(9.85)      | .269/(6.83)  | .912/(23.16) |              |



CUSTOMER DRAWING

- NOTES:
- MATERIAL: COPPER .031/(.79) THICK.
  - PLATING: ELECTRO-TIN.
  - INSULATION: MOLDED PVC (BLUE)
  - ALL DIMENSIONS IN INCHES/(MM).
  - MWID=MAXIMUM WIRE INSULATION DIAMETER.
  - (A1) PART IS ROHS COMPLIANT.

|  |                 |  |  |  |                  |                        |
|--|-----------------|--|--|--|------------------|------------------------|
| <b>CORRECT TOLERANCE</b><br>EC NO: WNA 2008-0105<br>DRWN: ETHRODAHL 2008/03/10<br>CHKD: MACNEIL 2008/03/11<br>APPR: MACNEIL 2008/03/12 | QUALITY SYMBOLS | GENERAL TOLERANCES (UNLESS SPECIFIED)  | DIMENSION STYLE  | SCALE  | DESIGN UNITS     | THIRD ANGLE PROJECTION |
|  | ▼=0<br>▽=0      | mm    INCH<br>4 PLACES ± --- ± ---<br>3 PLACES ± --- ± .005<br>2 PLACES ± 0.13 ± .01<br>1 PLACE ± 0.25 ± ---<br>ANGULAR ± 1/2° | IN/MM  | 4:1  | INCH             |                        |
|  | REV             | DRAFT WHERE APPLICABLE MUST REMAIN WITHIN DIMENSIONS   | DRAWN BY: HEB    DATE: 1999/11/12<br>CHECKED BY: RWD    DATE: 1999/11/12<br>APPROVED BY: RWD    DATE: 1999/11/12   | TITLE: SPADE TONGUE TERMINAL<br>16-14 AWG<br>INSULKRIMP 200 SERIES |                  |                        |
|  | A1              |  | MATERIAL NO. SEE CHART<br>SIZE B THIS DRAWING CONTAINS INFORMATION THAT IS PROPRIETARY TO MOLEX INCORPORATED AND SHOULD NOT BE USED WITHOUT WRITTEN PERMISSION | MOLEX INCORPORATED<br>DOCUMENT NO. SD-19144-001                    | SHEET NO. 1 OF 1 |                        |