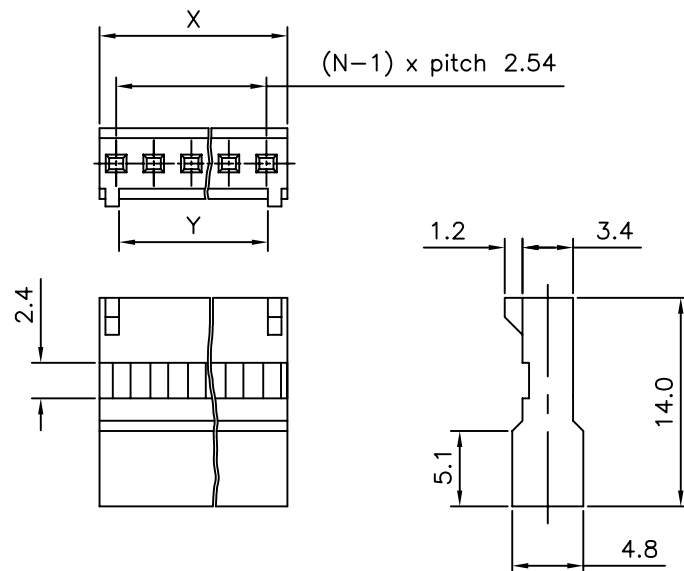
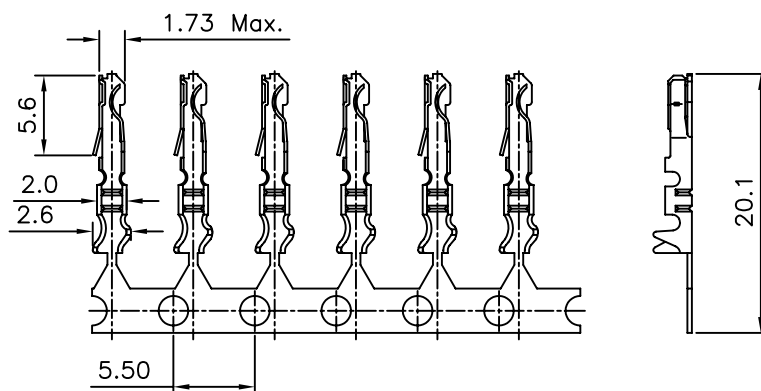


25	60.86	63.50
24	58.32	60.96
23	55.78	58.42
22	53.24	55.88
21	50.70	53.34
20	48.16	50.80
19	45.62	48.26
18	43.08	45.72
17	40.54	43.18
16	38.00	40.64
15	35.46	38.10
14	32.92	35.56
13	30.38	33.02
12	27.84	30.48
11	25.30	27.94
10	22.76	25.40
09	20.22	22.86
08	17.68	20.32
07	15.14	17.78
06	12.60	15.24
05	10.06	12.70
04	7.52	10.16
03	4.98	7.62
02	2.44	5.08
NO.OF POSN.	X	Y



FEMALE CRIMP INSULATOR



FEMALE CRIMP CONTACT

8614 - 10 - XX - 1 - SO - 2 - XX

SERIES

FEMALE CONNECTOR

NO.OF CONTACTS

SINGLE ROW - 1

LF :- LEAD FREE

1- TIN LEAD PLATED

2- GOLD PLATED

TYPE OF CONTACTS

CRIMP TERMINATION

(SUPPLIED WITH LOOSE CTS.)

Notes:

- 1, THE PRODUCT LF MEETS EUROPEAN UNION DIRECTIVES AND OTHER COUNTRY REGULATIONS AS DESCRIBED IN GS-22-008
2. MATERIAL
CONTACT : SPECIAL BRASS
INSULATOR : PBT BLACK

mat'l. code SEE NOTE 2				surface ISO 1302 ✓	tolerance ISO 406 ISO 1101	projection 	product family 8614			
ltr	ecn no	dr	date	tolerances unless otherwise specified			title			
C	I06-0116	AB	2006-07-20	angles	linear	±0.1	FEMALE CRIMP CONNECTOR			
				0°±1°			scale -			
				dr	MINI K VANDANATH	1999-12-14	dwg no		sheet 1 of 1	size
				enr	SHAJIG	1999-12-14	C-8614-0093			A4
				chr	ALEX BABU	2006-07-20				
				app	BIJU K PAUL	2006-07-20				
sheet	revision	B	C				type		Product Customer	Drawing
index	sheet	1	1							