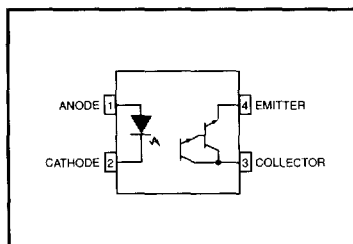
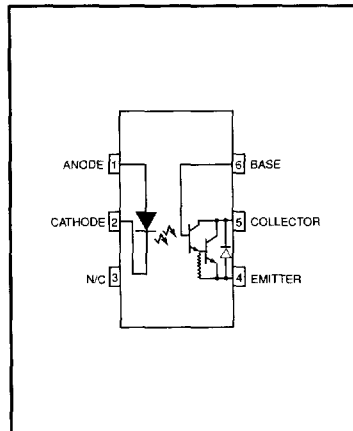

Photodarlington Output; GaAs Input (No base connection)

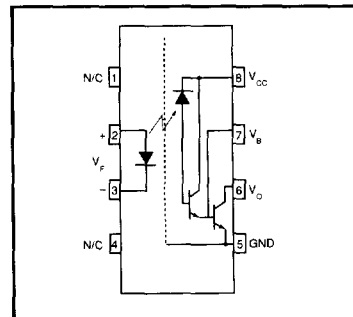
Part Number	CTR @ 10mA I _F (%)		BV _{CEO} (V)	BV _{ECO} (V)	V _{CE(SAT)} (V)	V _{ISO} AC[RMS]	Pkg Outline		Agency Approvals		
	min	max	min	min	max		QT	MOT	Standard	VDE 0884	
										QT	MOT
MOC119	300	-	30	7	1.0	5.3kV	N/A	J	A,D,F,N,S,T,U	N/A	V
MOC8020	500	-	50	5	-	5.3kV	N/A	J	A,D,F,N,S,T,U	N/A	V
MOC8021	1000	-	50	5	-	5.3kV	N/A	J	A,D,F,N,S,T,U	N/A	V
MOC8030	300	-	80	5	-	5.3kV	N/A	J	A,D,F,N,S,T,U	N/A	V
MOC8050	500	-	80	5	-	5.3kV	N/A	J	A,D,F,N,S,T,U	N/A	V


Photodarlington Output; GaAs Input (No base connection) (4-Pin)

Part Number	CTR @ 5mA I _F (%)		BV _{CEO} (V)	BV _{CBO} (V)	V _{CE(SAT)} (V)	V _{ISO} AC[RMS]	Pkg Outline		Agency Approvals		
	min	max	min	min	max		QT	MOT	Standard	VDE 0884	
										QT	MOT
H24B1	50	-	30	7	1.0	3.75kV	F	N/A	A,B,D,F,N,S,U	.300	N/A
H24B2	20	-	30	7	1.0	3.75kV	F	N/A	A,B,D,F,N,S,U	.300	N/A


High Voltage Photodarlington Output; GaAs Input (w/integral base-emitter resistor)

Part Number	CTR @ 10mA I _F (%)		BV _{CEO} (V)	BV _{CBO} (V)	V _{CE(SAT)} (V)	V _{ISO} AC[RMS]	Pkg Outline		Agency Approvals		
	min	max	min	min	max		QT	MOT	Standard	VDE 0884	
										QT	MOT
H11G1	1000	-	100	100	1.0	5.3kV	K	J	A,B,D,F,N,S,T,U	.300	V
H11G2	1000	-	80	80	1.0	5.3kV	K	J	A,B,D,F,N,S,T,U	.300	V
H11G3	200*	-	55	55	1.2	5.3kV	K	J	A,B,D,F,N,S,T,U	.300	V


High Gain Split Darlington Output; GaAsP Input

Part Number	CTR @ 1.6mA I _F (%)		V _{OL} (V)	I _{OH} (μA)	t _{PHL} /t _{PLH} (μs)	V _{ISO} AC[RMS]	Pkg Outline		Agency Approvals		
	min	max	max	max	max		QT	MOT	Standard	VDE 0884	
										QT	MOT
6N138	300	2600	0.4	250	10/35	2.5kV	D	N/A	A, U	N/A	N/A
6N139	500	2600	0.4	100	25/60	2.5kV	D	N/A	A, U	N/A	N/A
CNW138	300	-	0.4	250	10/35	2.5kV	B	N/A	A,B,D,F,N,S,U	.300	N/A
CNW139	500	-	0.4	100	25/60	2.5kV	B	N/A	A,B,D,F,N,S,U	.300	N/A

Notes:

Optocoupler package drawings appear on pages 23, 24 and 25

 * CTR measured at I_F = 1mA.