

# SPECIFICATIONS

## Mechanical

Contact Retention Force: 0.91kg min.

## Electrical

Voltage Rating: 600V

Current Rating: 6A

Dielectric Withstanding Voltage: 1500V AC

Insulation Resistance: 1000M

## Physical

Housing: Thermoplastic, UL 94V-0 rated in Ivory Color

Contact: Copper alloy

Plating: See "ORDERING INFORMATION"

Operating Temperature: -40 °C to +105 °C

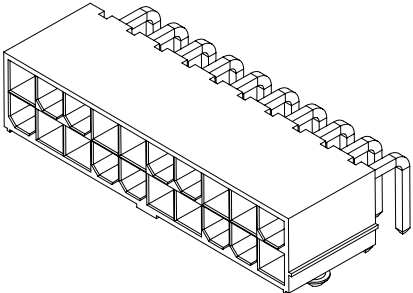
# Power Connector

## HM30 Series

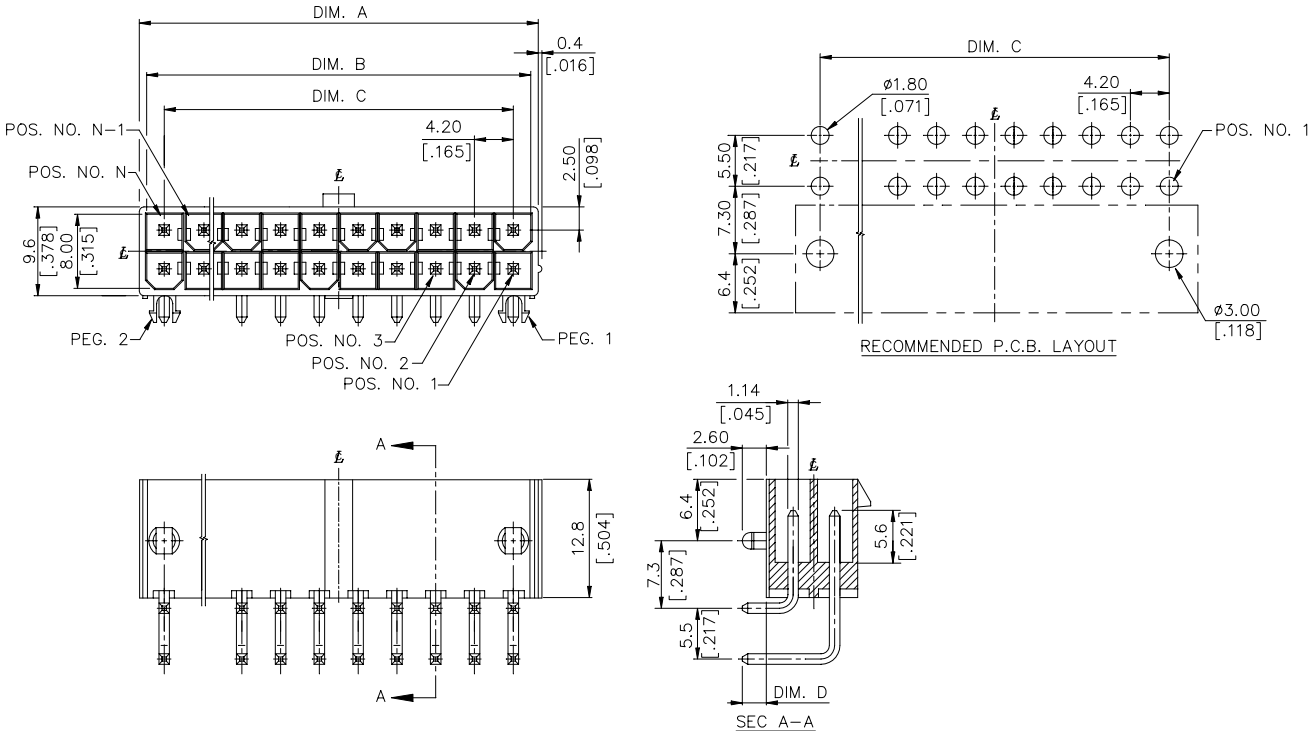
Right Angle, T/H Type

4.20mm x 4.20mm Grid

[.165" x .165"]

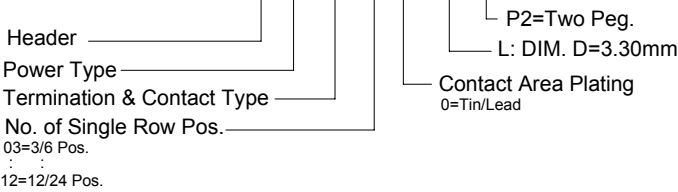


# DRAWING



# ORDERING INFORMATION

PRODUCT NO.: H M 30 \*\* 0 - L P2



P/N	POS.	DIM. A	DIM. B	DIM. C
HM30120-LP2	12/24	51.6 [2.032]	50.00 [1.969]	46.20 [1.819]
HM30110-LP2	11/22	47.4 [1.866]	45.80 [1.803]	42.00 [1.654]
HM30100-LP2	10/20	43.2 [1.701]	41.60 [1.638]	37.80 [1.488]
HM30090-LP2	9/18	39.0 [1.535]	37.40 [1.472]	33.60 [1.323]
HM30080-LP2	8/16	34.8 [1.370]	33.20 [1.307]	29.40 [1.158]
HM30070-LP2	7/14	30.6 [1.205]	29.00 [1.142]	25.20 [.992]
HM30060-LP2	6/12	26.4 [1.039]	24.80 [.976]	21.00 [.827]
HM30050-LP2	5/10	22.2 [.874]	20.60 [.811]	16.80 [.661]
HM30040-LP2	4/8	18.0 [.709]	16.40 [.646]	12.60 [.496]
HM30030-LP2	3/6	13.8 [.543]	12.20 [.480]	8.40 [.331]