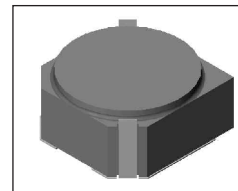


SMT Power Inductor

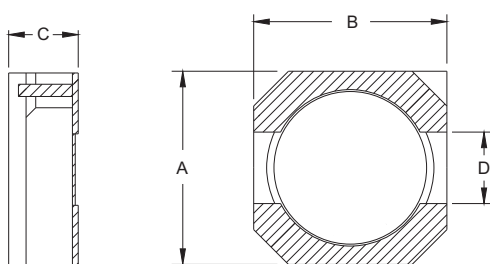
SIL625 Type

Features

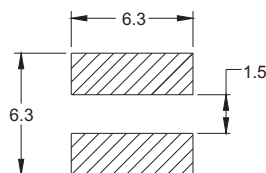
- RoHS compliant.
- Small size (5.6mm*5.6mm), Low profile (2.0mm max. height) SMD type.
- Magnetically shielded, suitable for high density mounting.
- High energy storage and low DCR.
- Provided with embossed carrier tape packing.
- Ideal for power source circuits, DC-DC converter, DC-AC inverters inductor applications.
- In addition to the standard versions shown here, customized inductors are available to meet your exact requirements.



Mechanical Dimension:



RECOMMENDED PAD PATTERNS



UNIT : mm/inch
A = 6.0 / 0.236 Max.
B = 6.0 / 0.236 Max.
C = 2.5 / 0.098 Max.
D = 2.0±0.1 / 0.079±0.004

Electrical Characteristics: 25°C: 100KHz, 0.1V

PART NO.	L ¹ (μH)	DCR (Ω) MAX	I _{rated} ² (A dc)
SIL625 - 0R6	0.6	0.016	4.30
SIL625 - 1R0	1.0	0.026	3.40
SIL625 - 1R8	1.8	0.030	2.90
SIL625 - 2R2	2.2	0.032	2.50
SIL625 - 3R0	3.0	0.037	2.30
SIL625 - 3R8	3.8	0.045	2.00
SIL625 - 4R7	4.7	0.048	1.80
SIL625 - 220	22.0	0.181	0.70

1. Tolerance of inductance : ± 30%.
2. I_{rated} is the DC current which cause the inductance drop less than 35% of its nominal inductance without current and the surface temperature of the part increase less than 45°C.
3. Operating temperature: -20°C to 105°C (including self-temperature rise).



DELTA ELECTRONICS, INC.

(TAOYUAN PLANT CPBG) 252, SAN YING ROAD, KUEISAN INDUSTRIAL ZONE, TAOYUAN SHIEN, 333, TAIWAN, R.O.C.

TEL: 886-3-3591968; FAX: 886-3-3591991

<http://www.deltawww.com>