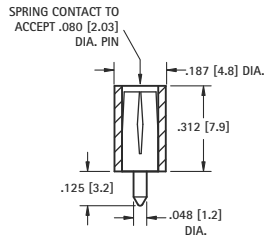


# .080 [2.0] PC TEST JACKS



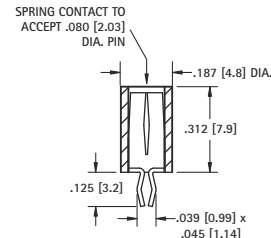
## VERTICAL



| CAT. NO. | COLOR  |
|----------|--------|
| 6036     | WHITE  |
| 6037     | RED    |
| 6038     | BLACK  |
| 6039     | YELLOW |
| 6040     | GREEN  |
| 6041     | BLUE   |

**MATERIAL:**  
Body: Nylon per ASTM D4066  
Contact: Brass, Silver Plate

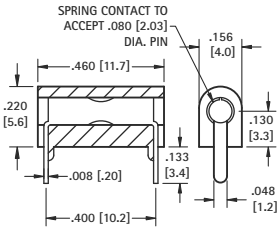
## SNAP-FIT VERTICAL



| CAT. NO. | COLOR  |
|----------|--------|
| 6042     | WHITE  |
| 6043     | RED    |
| 6044     | BLACK  |
| 6045     | YELLOW |
| 6046     | GREEN  |
| 6047     | BLUE   |

**MATERIAL:**  
Body: Nylon per ASTM D4066  
Contact: Beryllium Copper, Silver Plate  
Mounting: Snap-fits into .052 (1.32) hole

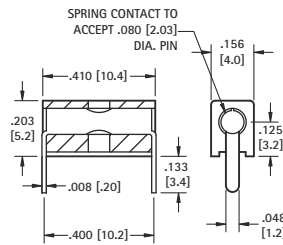
## LOW PROFILE HORIZONTAL



| GOLD PLATE CAT. NO. | COLOR  | SILVER PLATE CAT. NO. |
|---------------------|--------|-----------------------|
| 6060                | WHITE  | 6066                  |
| 6061                | RED    | 6067                  |
| 6062                | BLACK  | 6068                  |
| 6063                | YELLOW | 6069                  |
| 6064                | GREEN  | 6070                  |
| 6065                | BLUE   | 6071                  |

**MATERIAL:**  
Body: Nylon per ASTM D4066  
Contact: Beryllium Copper, Gold or Silver Plate

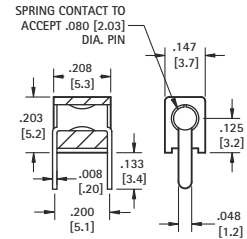
## UNIVERSAL HORIZONTAL



| CAT. NO. | COLOR  |
|----------|--------|
| 6054     | WHITE  |
| 6055     | RED    |
| 6056     | BLACK  |
| 6057     | YELLOW |
| 6058     | GREEN  |
| 6059     | BLUE   |

**MATERIAL:**  
Body: Nylon per ASTM D4066  
Contact: Beryllium Copper, Silver Plate

## MINIATURE HORIZONTAL



| CAT. NO. | COLOR  |
|----------|--------|
| 6048     | WHITE  |
| 6049     | RED    |
| 6050     | BLACK  |
| 6051     | YELLOW |
| 6052     | GREEN  |
| 6053     | BLUE   |

**MATERIAL:**  
Body: Nylon per ASTM D4066  
Contact: Beryllium Copper, Silver Plate

## HIGH TEMPERATURE PTFE INSULATED TEST POINT JACKS

### SPECIFICATIONS

**Terminal Jack:** Beryllium Copper (QQ-C-533)  
\*Brass ASTM B16

**Plating:** Gold per MIL-G-45204, Type II

**Operating Temperature:** -60 (-50) to + 500

### Bushing:

White PTFE **RoHS** (RoHS Compliant)

Red or Black PTFE **RoHS** (Non-RoHS Compliant)

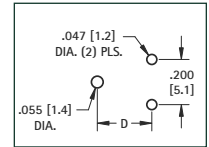


FIG. 1

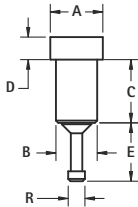


FIG. 2

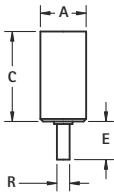
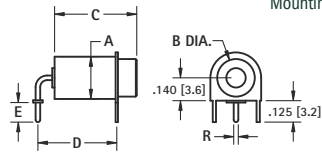


FIG. 3



| RoHS          |                 | NON-RoHS        |      |            |            |             |             |            |            |                       |             | Accepts |  |
|---------------|-----------------|-----------------|------|------------|------------|-------------|-------------|------------|------------|-----------------------|-------------|---------|--|
| White         | Red             | Black           | FIG. | A          | B          | C           | D           | E          | R          | Tip Dia. ± .001 (.03) | Tip Length  |         |  |
| <b>11001</b>  | <b>11001-R</b>  | <b>11001-B</b>  | 1    | .142 (3.6) | .120 (3.0) | .244 (6.2)  | .046 (1.2)  | .120 (3.0) | .060 (1.5) | .040 (1.0)            | .205 (5.2)  |         |  |
| <b>11002</b>  | <b>11002-R</b>  | <b>11002-B</b>  | 1    | .142 (3.6) | .120 (3.0) | .283 (7.2)  | .046 (1.2)  | .120 (3.0) | .060 (1.5) | .040 (1.0)            | .245 (6.2)  |         |  |
| <b>11003</b>  | <b>11003-R</b>  | <b>11003-B</b>  | 1    | .172 (4.4) | .140 (3.6) | .142 (3.6)  | .050 (1.3)  | .060 (1.5) | .080 (2.0) | .040 (1.0)            | .125 (3.2)  |         |  |
| <b>11004</b>  | <b>11004-R</b>  | <b>11004-B</b>  | 1    | .172 (4.4) | .148 (3.8) | .179 (4.5)  | .046 (1.2)  | .120 (3.0) | .060 (1.5) | .040 (1.0)            | .140 (3.6)  |         |  |
| <b>11005</b>  | <b>11005-R</b>  | <b>11005-B</b>  | 1    | .218 (5.5) | .185 (4.7) | .301 (7.6)  | .050 (1.3)  | .105 (2.7) | .125 (3.2) | .080 (2.0)            | .315 (8.0)  |         |  |
| <b>11006</b>  | <b>11006-R</b>  | <b>11006-B</b>  | 1    | .218 (5.5) | .185 (4.7) | .271 (6.9)  | .046 (1.2)  | .120 (3.0) | .074 (1.9) | .080 (2.0)            | .195 (4.9)  |         |  |
| <b>11007</b>  | <b>11007-R</b>  | <b>11007-B</b>  | 1    | .218 (5.5) | .185 (4.7) | .271 (6.9)  | .046 (1.2)  | .120 (3.0) | .074 (1.9) | .090 (2.3)            | .195 (4.9)  |         |  |
| <b>11008</b>  | <b>11008-R</b>  | <b>11008-B</b>  | 1    | .218 (5.5) | .185 (4.7) | .301 (7.6)  | .046 (1.2)  | .120 (3.0) | .074 (1.9) | .080 (2.0)            | .225 (5.7)  |         |  |
| <b>11009</b>  | <b>11009-R</b>  | <b>11009-B</b>  | 1    | .218 (5.5) | .185 (4.7) | .400 (10.2) | .050 (1.3)  | .187 (4.8) | .074 (1.9) | .080 (2.0)            | .280 (7.1)  |         |  |
| <b>11010</b>  | <b>11010-R</b>  | <b>11010-B</b>  | 1    | .218 (5.5) | .185 (4.7) | .271 (6.9)  | .046 (1.2)  | .136 (3.5) | .074 (1.9) | .080 (2.0)            | .340 (8.6)  |         |  |
| <b>11011</b>  | <b>11011-R</b>  | <b>11011-B</b>  | 2    | .218 (5.5) | -          | .430 (10.9) | -           | .150 (3.8) | .050 (1.3) | .080 (2.0)            | .200 (5.1)  |         |  |
| <b>11012*</b> | <b>11012-R*</b> | <b>11012-B*</b> | 2    | .218 (5.5) | -          | .500 (12.7) | -           | .150 (3.8) | .050 (1.3) | .080 (2.0)            | .280 (7.1)  |         |  |
| <b>11013</b>  | <b>11013-R</b>  | <b>11013-B</b>  | 3    | .218 (5.5) | .187 (4.8) | .689 (17.5) | .500 (12.7) | .125 (3.2) | .050 (1.3) | .080 (2.0)            | .500 (12.7) |         |  |
| <b>11014</b>  | <b>11014-R</b>  | <b>11014-B</b>  | 3    | .218 (5.5) | .187 (4.8) | .378 (9.6)  | .400 (10.2) | .125 (3.2) | .050 (1.3) | .080 (2.0)            | .250 (6.4)  |         |  |
| <b>11015</b>  | <b>11015-R</b>  | <b>11015-B</b>  | 3    | .218 (5.5) | .187 (4.8) | .378 (9.6)  | .400 (10.2) | .187 (4.7) | .035 (.89) | .080 (2.0)            | .250 (6.4)  |         |  |
| <b>11016</b>  | <b>11016-R</b>  | <b>11016-B</b>  | 3    | .218 (5.5) | .187 (4.8) | .378 (9.6)  | .500 (12.7) | .125 (3.2) | .050 (1.3) | .080 (2.0)            | .250 (6.4)  |         |  |

\* Terminal Material: Brass ASTM B16