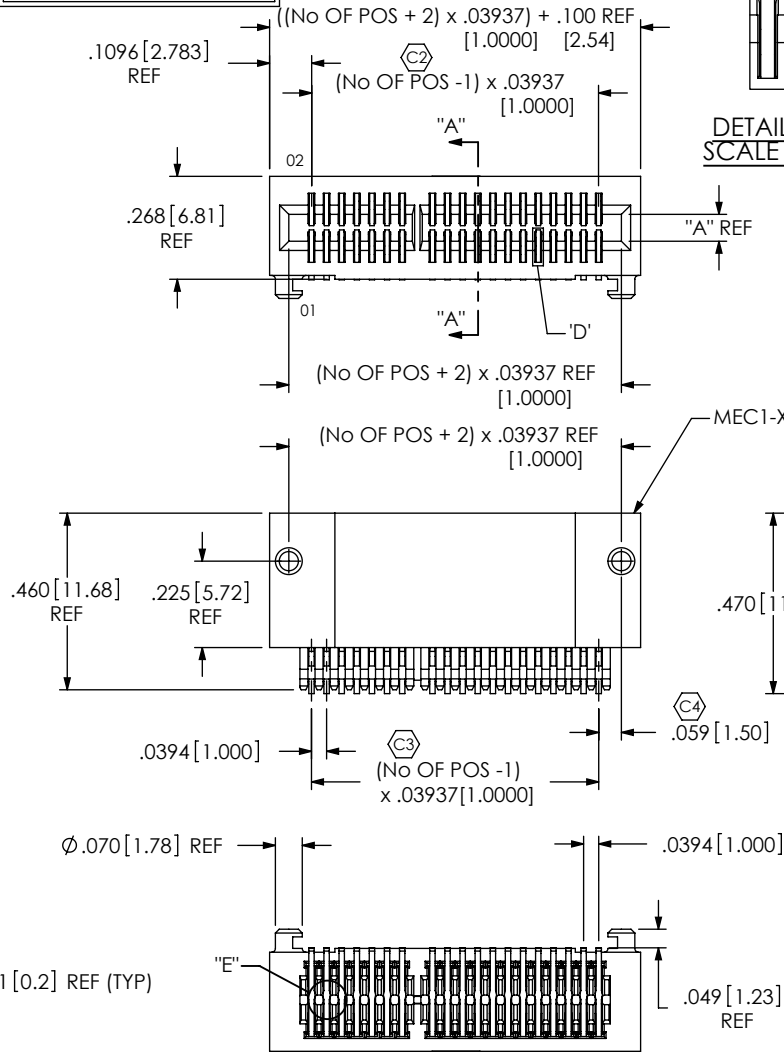


PATENT NUMBER
6159045

MEC1-1XX-XX-XX-D-RAX-XX-SL-XX



No OF POSITIONS
-05, -08, -20, -30,
-40, -50, -60 & -70
(PER ROW - SEE TABLE 2)

CARD THICKNESS
-01: .031 THICK CARD
(USE MEC1-XX-T-D-RAX-X-SL)
-02: .062 THICK CARD
(USE MEC1-XX-S-D-RAX-X-SL)
(SEE TABLES 1 AND 4)

PLATING
-F: GOLD FLASH (USE C-150-XX-F-P)
-L: LIGHT SELECTIVE GOLD (USE C-150-XX-L-P)
-S: SELECTIVE GOLD (USE C-150-XX-S-P)
-FM: FLASH GOLD SELECTIVE, MATTE TIN TAIL
(USE C-150-XX-F-P)
-LM: LIGHT SELECTIVE GOLD, MATTE TIN TAIL
(USE C-150-XX-L-P)
-SM: SELECTIVE GOLD, MATTE TIN TAIL
(USE C-150-XX-S-P)

OPTION
-TR: TAPE & REEL
(SUBSTITUTE -T- FOR -TR- DESIGNATION
WHEN USING -XM PLATING DESIGNATION
WITH BOTH -NP AND -SL OPTIONS)
(-T OR -TR OPTION NOT AVAILABLE FOR
70 POS)
-SOLDER LOCKS

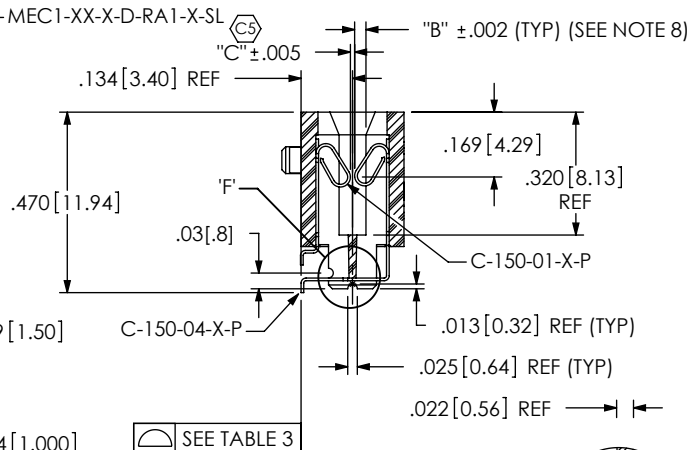
NON-POLARIZED OPTION
-NP: NO POLARIZED POSITION
(ONLY AVAILABLE ON -05,
-08, -20, & -30 POSITIONS)
-BLANK: BODY IS POLARIZED

TAIL OPTION
-RA1: STANDARD
-RA2: ELEVATED

ROW SPECIFICATION
-D: DOUBLE (USE MEC1-XX-X-D-RAX-X-SL)

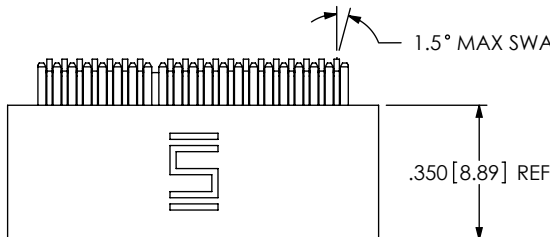
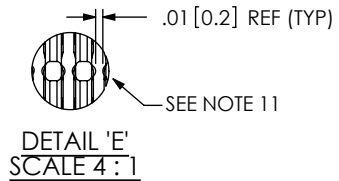
# POSITIONS	POSITIONS POLARIZED
-05	3, 4
-08	5, 6
-20	15, 16
-30	21, 22
-40	31, 32
-50	41, 42
-60	31, 32, 63, 64
-70	53, 54, 115, 116

POSITION	COPLANARITY
-05, -08, -20, -30, -40	.0040 [.102]
-50, -60, -70	.0060 [.152]



SECTION "A"- "A"
MEC1-120-02-XX-D-RA1-SL SHOWN
(IN-PROCESSES ON SHEET 2)

- NOTES:
1. C REPRESENTS A CRITICAL DIMENSION.
 2. COPLANARITY: SEE TABLE 3.
 3. BURR ALLOWANCE: .004 [0.10] MAX.
 4. NOTE DELETED.
 5. MINIMUM PUSHOUT FORCE: .5 LB.
 6. NOTE DELETED.
 7. TAIL OPTION -RA1 TO HAVE C-150-01-XX-X CONTACT FULLY PRE-FORMED.
 8. TO BE MEASURED ON OPPOSING CONTACTS.
 9. BODIES TO BE LAYER PACKAGED FOR TRANSIT BETWEEN INVENTORY AND PRODUCTION.
 10. TO BE MEASURED AT 2 MAIN 90° BENDS.
 11. HOT BAR FORM AFTER ASSEMBLY (WILL PRODUCE RETENTION FLANGE AS SHOWN).
 12. -F PLATING OPTION CAN BE SUBBED FOR -FM, -L FOR -LM, & -S FOR -SM



POSITIONS	MAX BOW (T/B)
05 THRU 20	.0020 [.051]
30 THRU 70	.0030 [.076]

CARD	"A"	"B"	"C"
-01	.0420 [1.067]	.0160 [.406]	.011 [.28]
-02	.0720 [1.829]	.0310 [.787]	.011 [.28]

UNLESS OTHERWISE SPECIFIED, DIMENSIONS ARE IN INCHES.
TOLERANCES ARE:
DECIMALS ANGLES
.XX: ±.01 [.3] 2°
.XXX: ±.005 [.13]
.XXXX: ±.0020 [.051]

PROPRIETARY NOTE
THIS DOCUMENT CONTAINS INFORMATION CONFIDENTIAL AND PROPRIETARY TO SAMTEC, INC. AND SHALL NOT BE REPRODUCED OR TRANSFERRED TO OTHER DOCUMENTS OR DISCLOSED TO OTHERS OR USED FOR ANY PURPOSE OTHER THAN THAT WHICH IT WAS OBTAINED WITHOUT THE EXPRESSED WRITTEN CONSENT OF SAMTEC, INC.

MATERIAL: DO NOT SCALE DRAWING SHEET SCALE: 2:1
FLAMMABILITY RATING: UL 94V-0

INSULATOR: LCP
-01: COLOR: NATURAL
-02: COLOR: BLACK
CONTACT: PHOS BRONZE

F:\DWG\MISC\MTG\MEC1-1XX-XX-XX-D-RAX-XX-SL-XX-MKT.SLDDRW

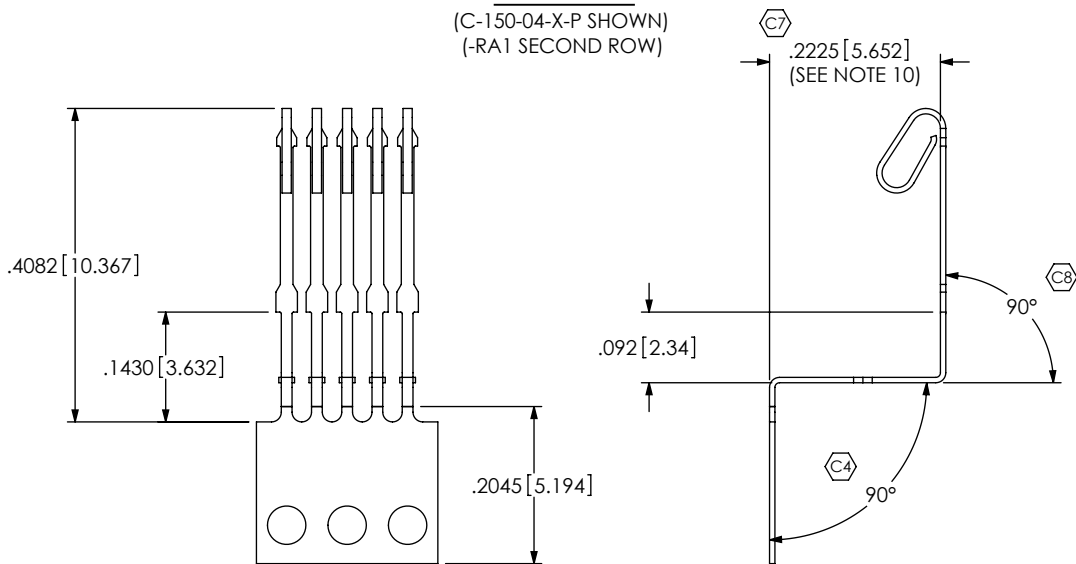
520 PARK EAST BLVD, NEW ALBANY, IN 47150
PHONE: 812-944-6733 FAX: 812-948-5047
e-Mail: info@SAMTEC.com code: 55322

DESCRIPTION: 1mm MEC1 -RA ASSEMBLY

DWG. NO. MEC1-1XX-XX-XX-D-RAX-XX-SL-XX

BY: MARKS 01/25/00 SHEET 1 OF 3

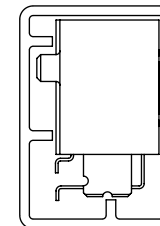
IN PROCESS
(C-150-04-X-P SHOWN)
(-RA1 SECOND ROW)



* DIMENSIONS ALSO APPLY TO C-150-14-X-P

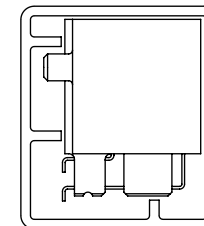
PACKAGING VIEW

STANDARD TAIL OPTION



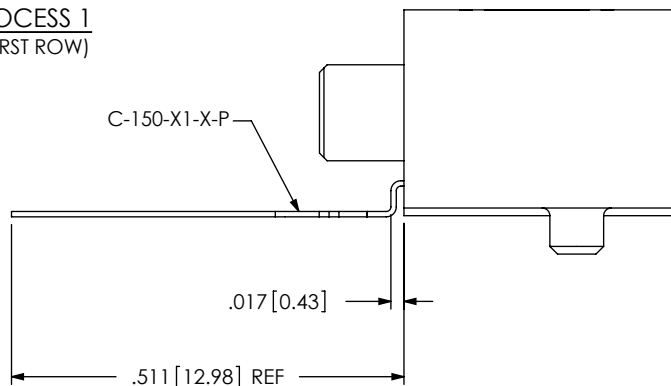
TUBE: PT-1-24-01-106
PLUG: TP-07

ELEVATED TAIL OPTION

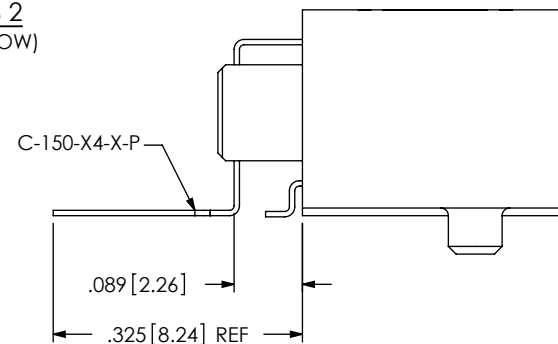


TUBE: PT-1-24-02-106
PLUG: TP-13

IN-PROCESS 1
(-RA1 FIRST ROW)



IN-PROCESS 2
(-RA1 SECOND ROW)



PROPRIETARY NOTE

THIS DOCUMENT CONTAINS INFORMATION CONFIDENTIAL AND PROPRIETARY TO SAMTEC, INC. AND SHALL NOT BE REPRODUCED OR TRANSFERRED TO OTHER DOCUMENTS OR DISCLOSED TO OTHERS OR USED FOR ANY PURPOSE OTHER THAN THAT WHICH IT WAS OBTAINED WITHOUT THE EXPRESSED WRITTEN CONSENT OF SAMTEC, INC.

DO NOT SCALE DRAWING

SHEET SCALE: 4:1

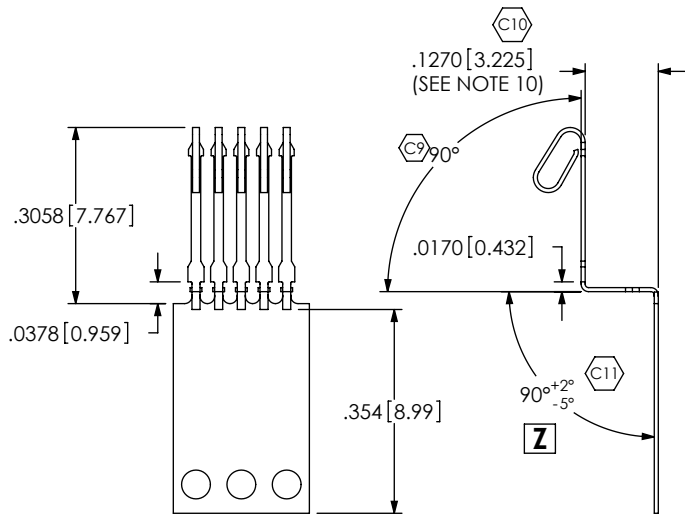


520 PARK EAST BLVD, NEW ALBANY, IN 47150
PHONE: 812-944-6733 FAX: 812-948-5047
e-Mail: info@SAMTEC.com code: 55322

DESCRIPTION:
1mm MEC1 -RA ASSEMBLY

DWG. NO.
MEC1-1XX-XX-XX-D-RAX-XX-SL-XX

BY: MARKS 01/25/00 SHEET 2 OF 3

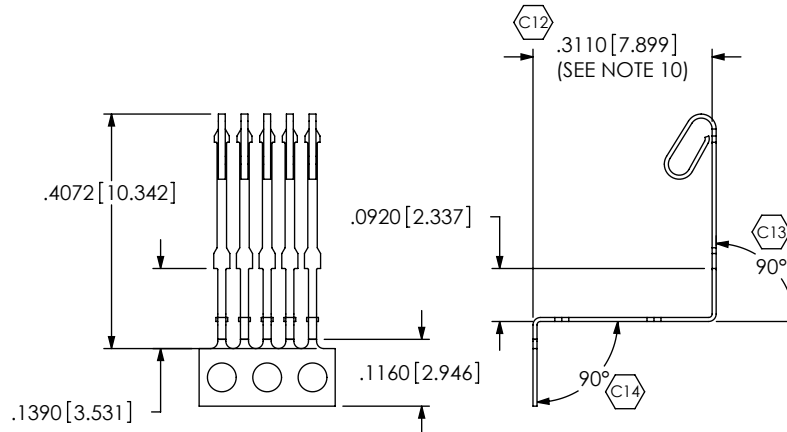


IN-PROCESS 1

(-RA2 FIRST ROW)
(C-150-05-X-P SHOWN)

* DIMENSIONS ALSO APPLY TO C-150-15-X-P

MEC1-120-02-XX-D-RA2-SL SHOWN

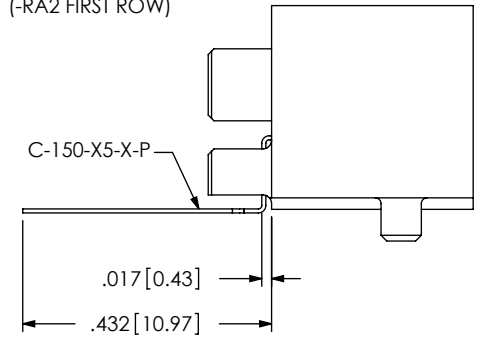


IN-PROCESS 1

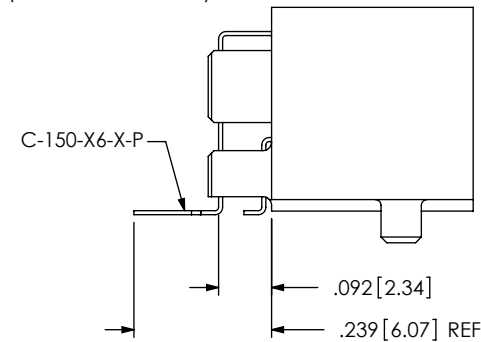
(-RA2 SECOND ROW)
(C-150-06-X-P SHOWN)

* DIMENSIONS ALSO APPLY TO C-150-16-X-P

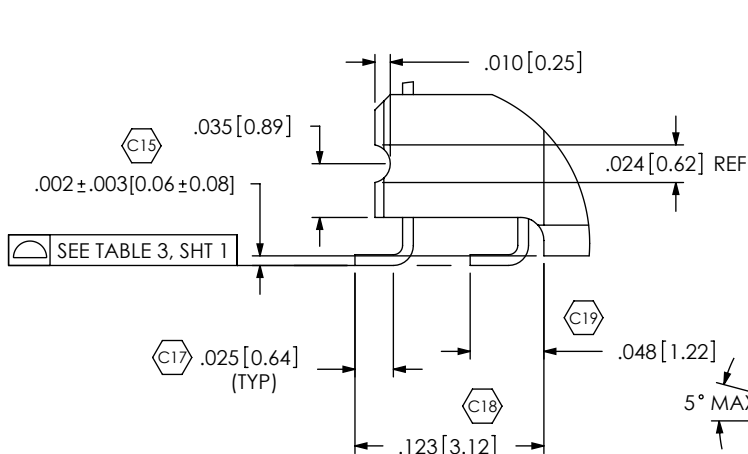
IN-PROCESS 2
(-RA2 FIRST ROW)



IN-PROCESS 2
(-RA2 SECOND ROW)

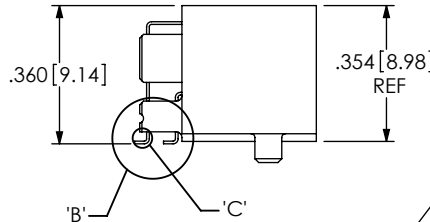


TAIL OPTION -RA2 [ELEVATED] SHOWN
(DIFFERENT AS SHOWN, OTHERWISE SAME AS TAIL OPTION -RA1)

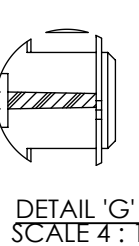
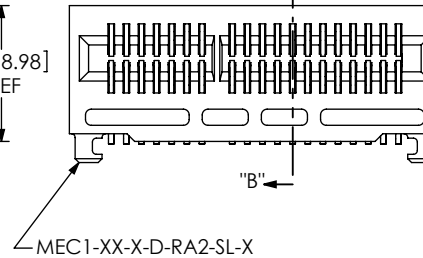


DETAIL 'B'
SCALE 8:1

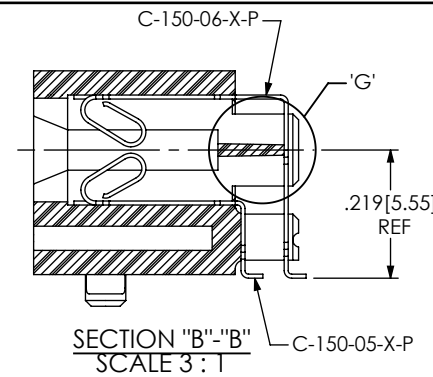
(DIMENSIONS APPLY TO -RA1 & -RA2 OPTIONS)
(SEE NOTE 11 & DETAIL 'E', SHT 1)



DETAIL 'C'
SCALE 10:1
(APPLIES TO BOTH ROWS)



DETAIL 'G'
SCALE 4:1



SECTION "B"-"B"
SCALE 3:1

F:\DWG\MISC\WKTG\MEC1-1XX-XX-XX-D-RAX-XX-SL-XX-MKT.SLDDRW

PROPRIETARY NOTE

THIS DOCUMENT CONTAINS INFORMATION CONFIDENTIAL AND PROPRIETARY TO SAMTEC, INC. AND SHALL NOT BE REPRODUCED OR TRANSFERRED TO OTHER DOCUMENTS OR DISCLOSED TO OTHERS OR USED FOR ANY PURPOSE OTHER THAN THAT WHICH IT WAS OBTAINED WITHOUT THE EXPRESSED WRITTEN CONSENT OF SAMTEC, INC.

DO NOT SCALE DRAWING

SHEET SCALE: 2:1



520 PARK EAST BLVD. NEW ALBANY, IN 47150
PHONE: 812-944-6733 FAX: 812-948-5047
e-Mail: info@SAMTEC.com code: 55322

DESCRIPTION: 1mm MEC1 -RA ASSEMBLY	
DWG. NO. MEC1-1XX-XX-XX-D-RAX-XX-SL-XX	
BY: MARKS 01/25/00	SHEET 3 OF 3