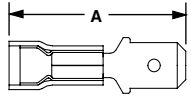


MALE DISCONNECTS

Nylon Barrel Insulated

Funnel Entry

- Insulation Grip Sleeve



CERTIFIED*
*Except DNF10-250M



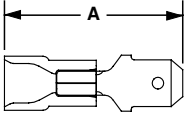
| PANDUIT® Part Number | Wire Range | Color Code | Max. Ins. | Dim. (In.) | | Tab Size | Std. Pkg. Qty. | Std. Ctn. Qty. | Bulk Pkg. Qty. | Bulk Ctn. Qty. | Crimp Tools |
|----------------------|------------|------------|-----------|------------|--|-------------|----------------|----------------|----------------|----------------|--------------------|
| | | | | A | | | | | | | |
| DNF18-250M-C | 22-18 | Red | .136 | .90 | | .250 x .032 | 100 | 1000 | 1000 | 6000 | CT-1550 CT-1551 |
| DNF14-250M-C | 16-14 | Blue | .162 | .90 | | .250 x .032 | 100 | 1000 | 1000 | 6000 | |
| DNF10-250M-L | 12-10 | Yellow | .225 | .95 | | .250 x .032 | 50 | 500 | 500 | 3000 | |

Order the number of pieces required in multiples of standard package quantities.
L = 50 pcs., C = 100 pcs., D = 500 pcs. and M = 1000 pcs.
Prime items appear in **BOLD**.

Vinyl Barrel Insulated

Funnel Entry

- Butted Seam



CERTIFIED*
*Except DV10-250M



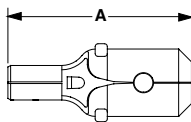
| PANDUIT Part Number | Wire Range | Color Code | Max. Ins. | Dim. (In.) | | Tab Size | Std. Pkg. Qty. | Std. Ctn. Qty. | Bulk Pkg. Qty. | Bulk Ctn. Qty. | Crimp Tools |
|---------------------|------------|------------|-----------|------------|--|-------------|----------------|----------------|----------------|----------------|--------------------|
| | | | | A | | | | | | | |
| DV18-250MB-C | 22-18 | Red | .154 | .98 | | .250 x .032 | 100 | 500 | 1000 | 6000 | CT-1550 CT-1551 |
| DV14-250MB-C | 16-14 | Blue | .180 | .96 | | .250 x .032 | 100 | 500 | 1000 | 6000 | |
| DV10-250M-L | 12-10 | Yellow | .235 | .98 | | .250 x .032 | 50 | 500 | 500 | 3000 | |
| D18-250MB-C | 22-18 | — | — | .69 | | .250 x .032 | 100 | 500 | 1000 | 10,000 | CT-100 CT-200 |
| D14-250MB-C | 16-14 | — | — | .69 | | .250 x .032 | 100 | 500 | 1000 | 10,000 | |
| D10-250M-L | 12-10 | — | — | .72 | | .250 x .032 | 50 | 500 | 500 | 5000 | |

▲ = Brazed Seam

Order the number of pieces required in multiples of standard package quantities.
L = 50 pcs., C = 100 pcs., D = 500 pcs., and M = 1000 pcs.
Prime items appear in **BOLD**.

Non-Insulated

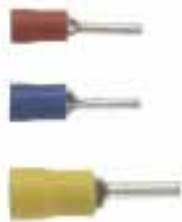
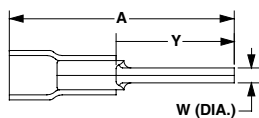
- Butted Seam



PIN TERMINALS

Vinyl Barrel Insulated

- Insulation Support
- Brazed Seam
- For Pin-Type Terminal Blocks



| PANDUIT Part Number | Wire Range | Color Code | Max. Ins. | Dimensions (In.) | | | Std. Pkg. Qty. | Std. Ctn. Qty. | Bulk Pkg. Qty. | Bulk Ctn. Qty. | Crimp Tools |
|---------------------|------------|------------|-----------|------------------|-----|-----|----------------|----------------|----------------|----------------|--|
| | | | | A | Y | W | | | | | |
| PV18-P47-C | 22-18 | Red | .150 | .98 | .49 | .07 | 100 | 1000 | 1000 | 6000 | CT-100 CT-260 CT-1550 CT-1551 |
| PV14-P47-C | 16-14 | Blue | .170 | .98 | .49 | .07 | 100 | 1000 | 1000 | 6000 | |
| PV10-P55-L | 12-10 | Yellow | .250 | 1.10 | .55 | .11 | 50 | 500 | 500 | 3000 | |
| P18-P47-C | 22-18 | — | — | .75 | .49 | .07 | 100 | 1000 | 1000 | 10,000 | CT-100 CT-200 CT-260 CT-1570 |
| P14-P47-C | 16-14 | — | — | .75 | .49 | .07 | 100 | 1000 | 1000 | 10,000 | |
| P10-P55-L | 12-10 | — | — | .79 | .55 | .11 | 50 | 500 | 500 | 5000 | |

Order the number of pieces required in multiples of standard package quantities.
L = 50 pcs., C = 100 pcs., D = 500 pcs. and M = 1000 pcs.
Prime items appear in **BOLD**.

Non-Insulated

- Brazed Seam
- Beveled Wire Lead-In
- For Pin-Type Terminal Blocks

