

POWER CONNECTOR

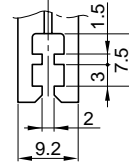
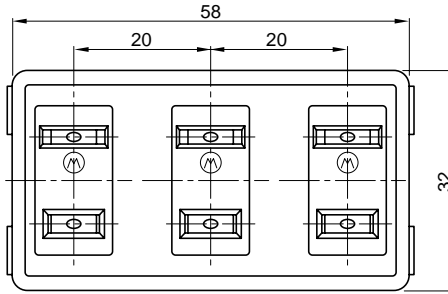


S-I 6522#01

3-Section AC Outlet (Polarized)

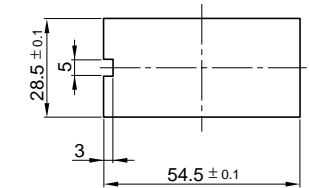
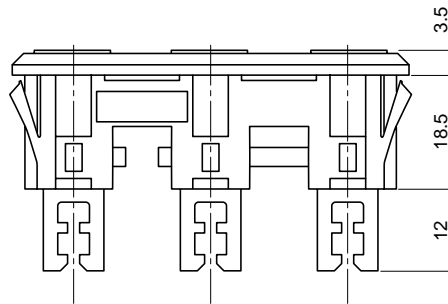
■ Specifications

1. Rating: 15A 125V AC
2. Contact Resistance: 50mΩ max.
3. Insulation Resistance: 100MΩ min. at 500V DC
4. Withstanding Voltage: 2000V AC for one minute
5. Operating Temperature: -10°C to +60°C
6. Main Unit Material: Polyphenylene Oxide (Black) 94V-1



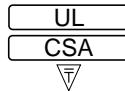
● Eyelet Type

■ Mounting Holes for panel



Material: Metal
Applicable Thickness: 0.8 to 1.2

Approval Standards:

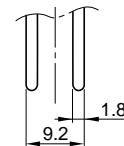
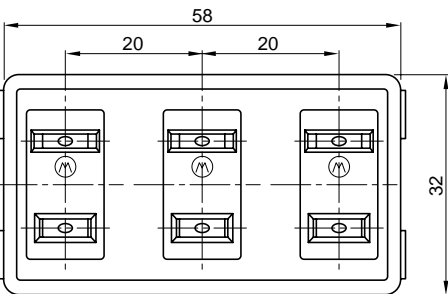


S-I 6523#01

3-Section AC Outlet (Polarized)

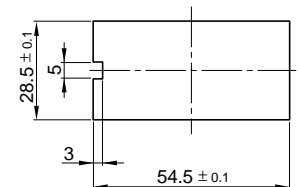
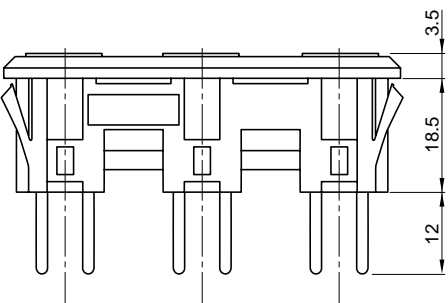
■ Specifications

1. Rating: 15A 125V AC
2. Contact Resistance: 50mΩ max.
3. Insulation Resistance: 100MΩ min. at 500V DC
4. Withstanding Voltage: 2000V AC for one minute
5. Operating Temperature: -10°C to +60°C
6. Main Unit Material: Polyphenylene Oxide (Black) 94V-1



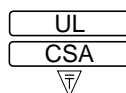
● Wrapping Type

■ Mounting Holes for panel



Material: Metal
Applicable Thickness: 0.8 to 1.2

Approval Standards:



Not applied