

ENGINEERING DATA SHEET

SERIES SFE*7*

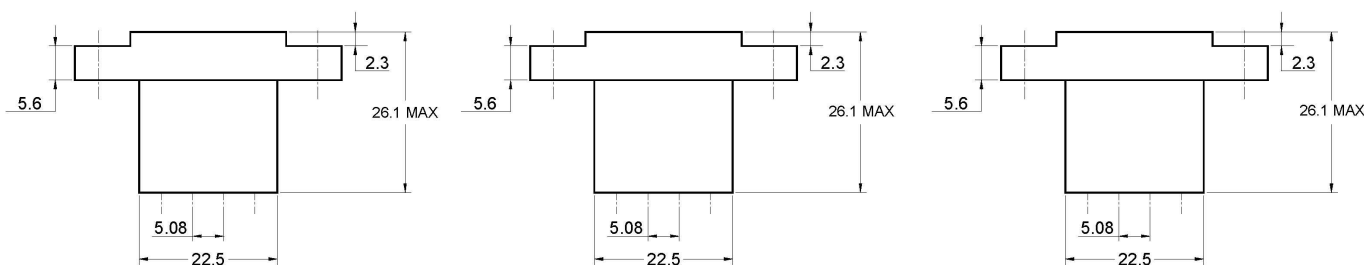
RAILWAY SOCKET ECONOMICAL STYLE



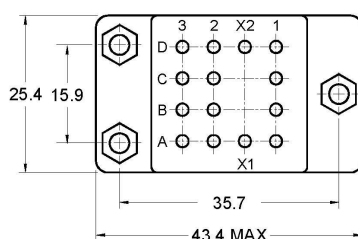
Basic Socket Series Designation for:

Series F370, F470, F570, F670 and timers. Coding possibility using keys devices adjustable by the user. To fit with H relay mounting style.

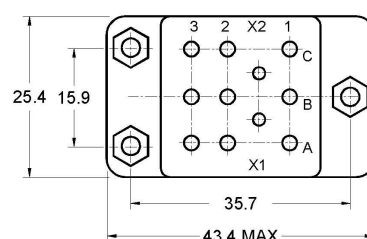
DIMENSIONS



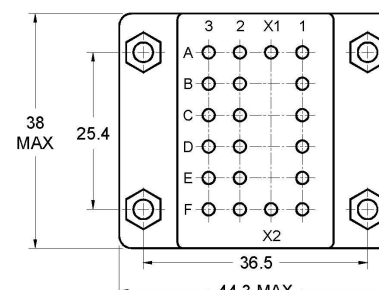
SFE 470



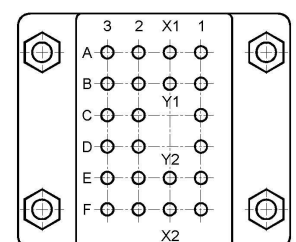
SFE 570



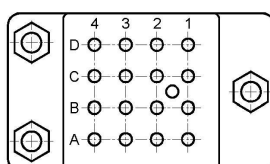
SFE 670



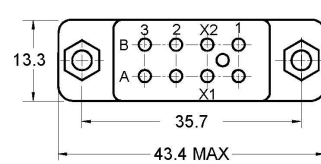
SFE 672



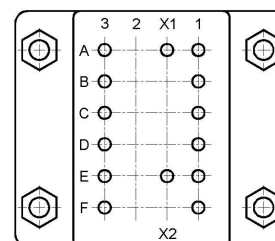
SFE 472



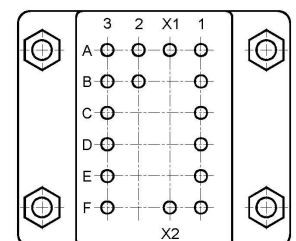
SFE 370



SFE D 670



SFE 670S2



GENERAL CHARACTERISTICS

- Monobloc design in thermoplastic resin.
- Fire and smoke specification NFF 16-102 (requirement 3).
- Electrical and environmental characteristics, in accordance with the relays characteristics.
- Hardware corrosion resistance steel.
- Crimp contacts in copper alloy.
- Installation torque, relay 0.45Nm, socket on structure 0.6Nm.
- Socket sealing plug for SFE37X/SFE47X/SFE67X: 11 0596 00 rear insertion.

Esterline Power Systems

Featuring **LEACH**® power and control solutions
www.esterline.com

AMERICAS
6900 Orangethorpe Ave.
P.O. Box 5032
Buena Park, CA 90622

Tel: (01) 714-736-7599
Fax: (01) 714-670-1145

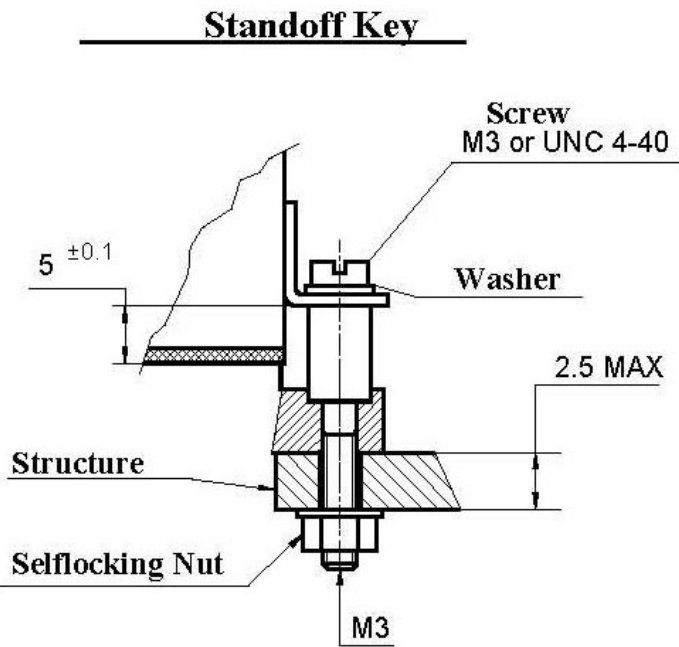
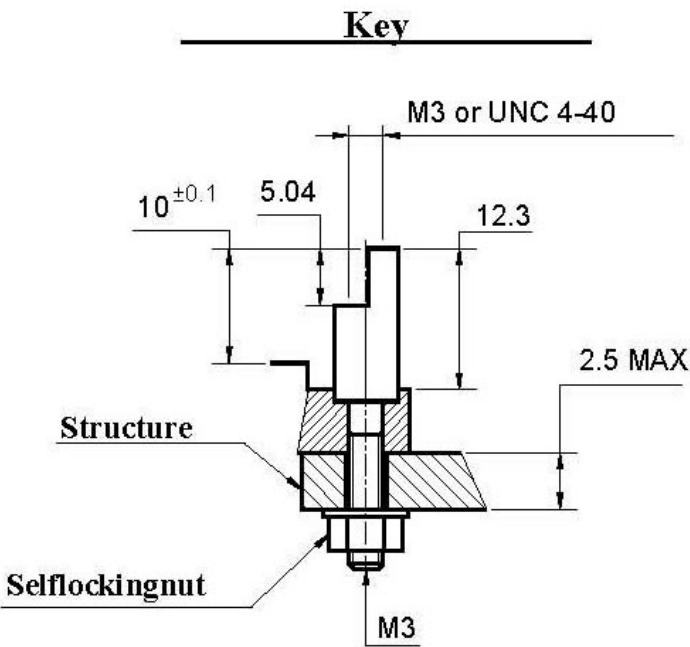
EUROPE
2 Rue Goethe
57430 Sarrebourg
France

Tel: (33) 3 87 97 31 01
Fax: (33) 3 87 97 96 86

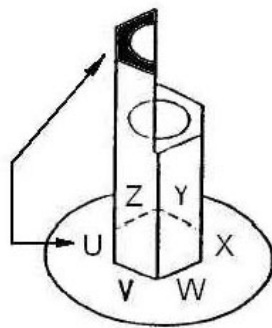
ASIA
Units 602-603 6/F Lakeside 1
No.8 Science Park West Avenue
Phase Two, Hong Kong Science Park
Pak Shek Kok, Tai Po, N.T.
Hong Kong
Tel: (852) 2 191 3830
Fax: (852) 2 389 5803

Data sheets are for initial product selection and comparison. Contact Esterline Power Systems prior to choosing a component.

MOUNTING HARDWARE

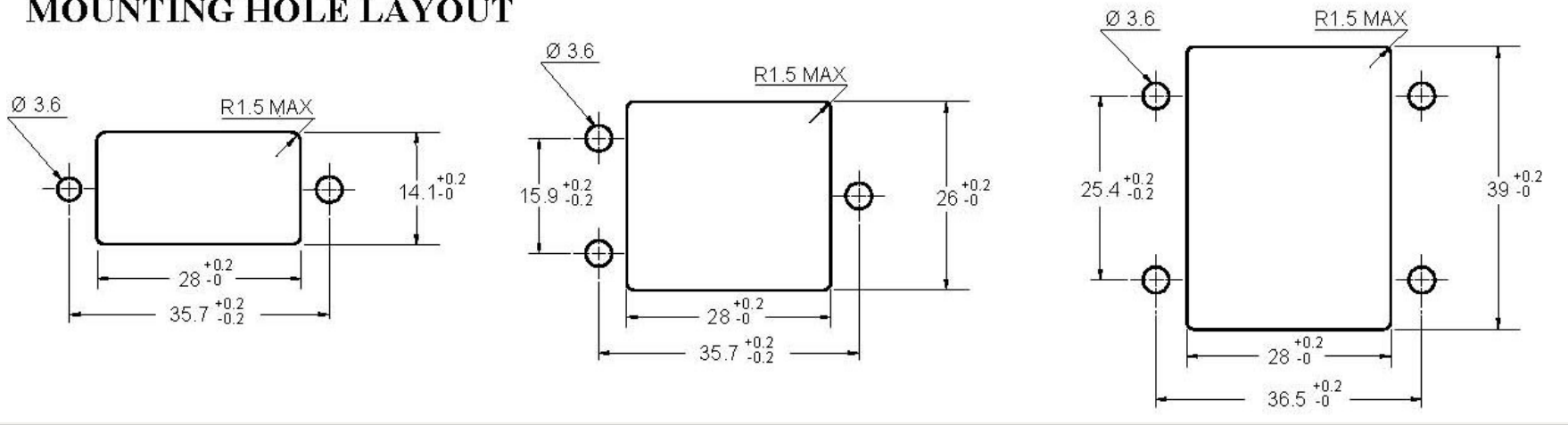


	0°	60°	120°	180°	240°	300°
	Code U	Code V	Code W	Code X	Code Y	Code Z
Key 1						
Key 3						
Key 2						
Key 2						
Key 1						



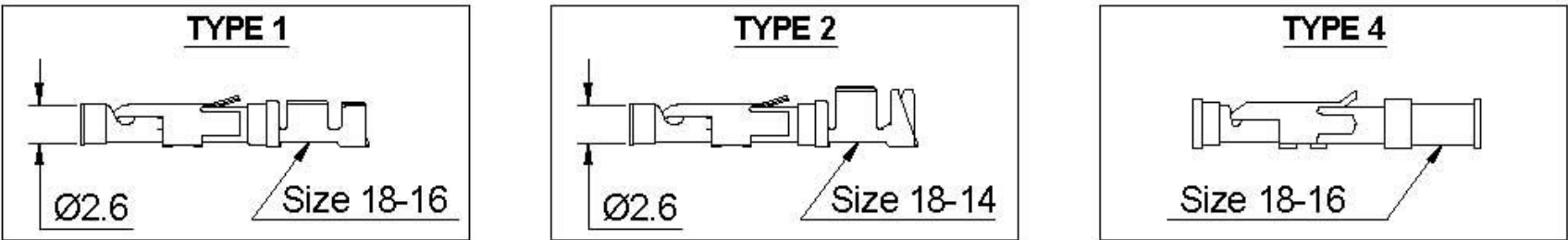
- Delivered Hardware**
- Standoff key
 - Selflocking nut
 - Washer
 - Screw
- (M3-5 or 4-40 length 5)

MOUNTING HOLE LAYOUT



Crimp contacts to plug in by the rear of the base.

For series SFE37X/SFE47X and SFE67X

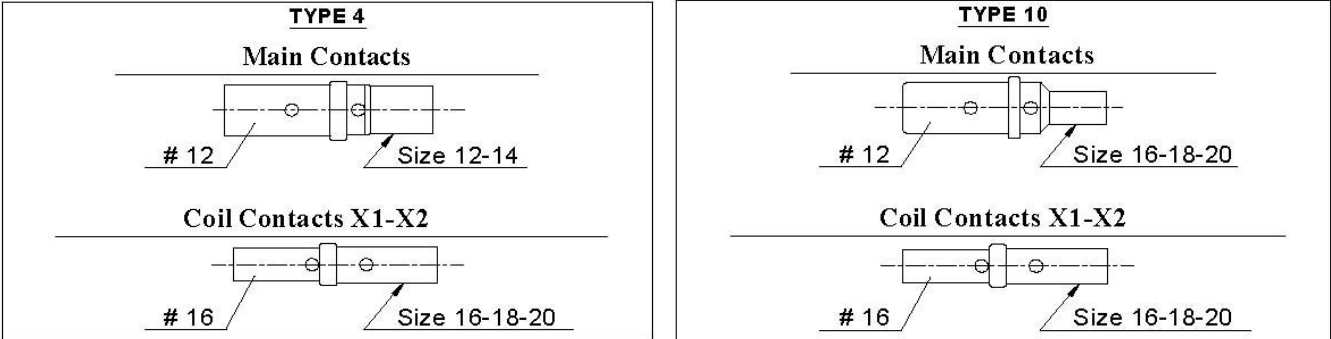


Insertion tool P/N: **AMP 91002-1** Extraction tool P/N: **AMP 305183.**

Crimping tool:

- P/N AMP 58945-2 or 91523-1 for contacts type 1 (size 18-16, wire section 0.75 to 1.50mm²)
- P/N AMP 91521-1 for contacts type 2 (size 18-14, wire section 0.8 to 2.00mm²)
- P/N AMP 91539-1 for contacts type 4 (size 18-16, wire section 0.8 to 1.40mm²)

For SFE570 only



Insertion and extraction tool:
main: **M81969/14-04** coil: **M81969/14-03**

Crimping tool:

M22520/1/01 with turret M22520/1-02 or MS 3191-1

Contact may be provided separately (using contacts P/N).

NUMBERING SYSTEM

	SFE	*7*	1	1
Basic series designation				
1-socket series (370,470,570,D670)				
2-Mounting Hardware				
3-Contact type				
Mounting hardware				
Code 0 = without hardware				
Code 1 = with key code M3				
Code 2 = with key code UNC 4-40				
Code 3 = with standoff key M3				
Code 4 = with standoff key UNC 4-40				
Contact type				
Type 0 = without contacts	-----			
Type 1 = contacts 11 16 0306 (wire size 18-16)				
Type 2 = contacts 11 16 0307 (wire size 14)			--	SFE37X/SFE47X/SFE67X
Type 4 = contacts 11 16 0333 (wire size 18-16)	-----			
Type 4 = main contacts 05 910 00 (wire size 12-14)	----			
coil contacts 05 911 00 (wire size 16-18-20)				
			--	SFE570
Type 10 = main contacts 05 910 01 (wire size 16-18-20)				
coil contacts 05 911 00 (wire size 16-18-20)				
