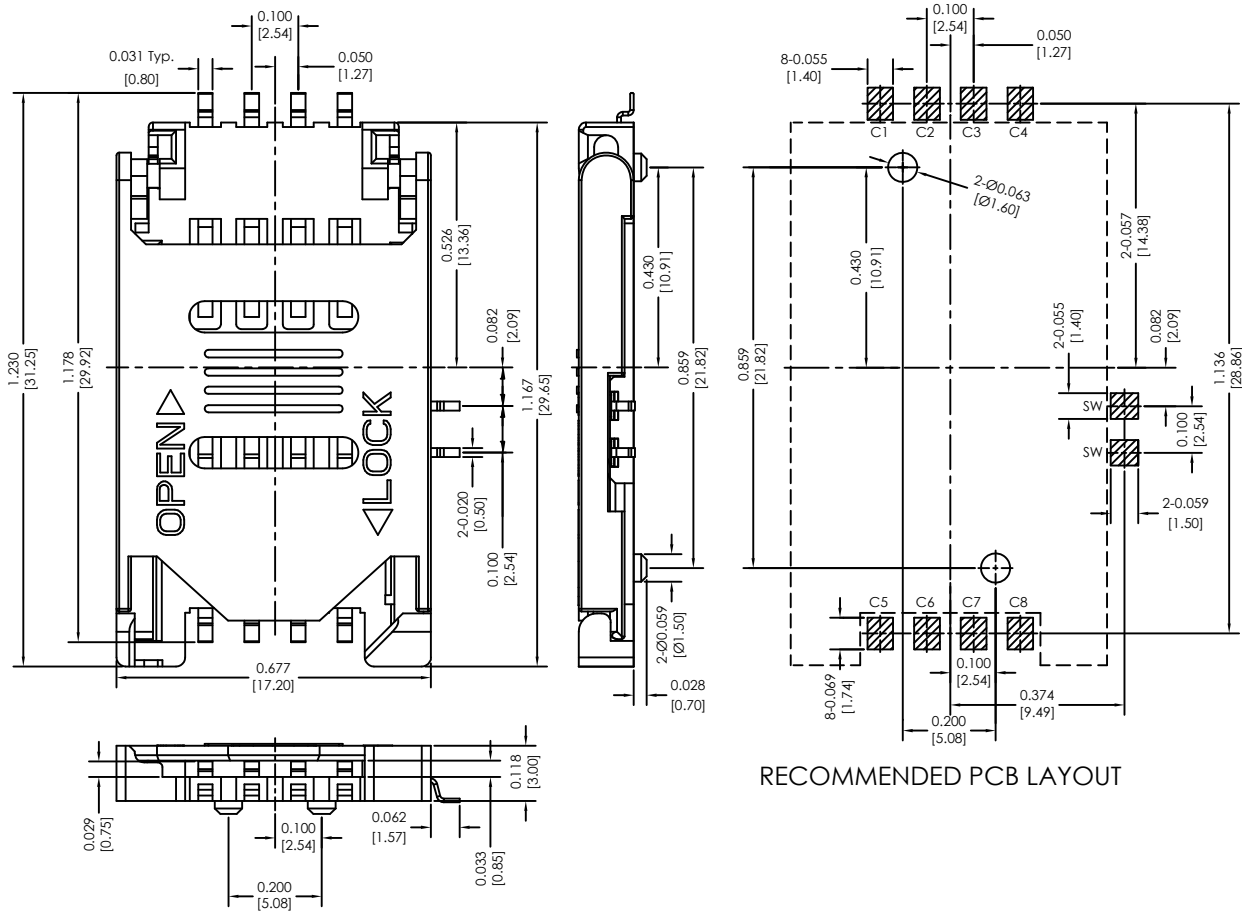


Major League Electronics 6 or 8 Pin Surface Mount SIM Connector With Switch & Optional Post



Ordering Information

SIMS46 - 30 - 2 - - - LF

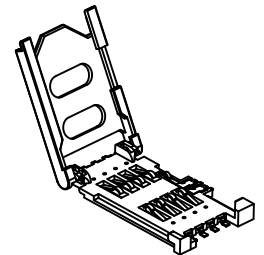
Number of Contacts
6 or 8
(Remove C4 & C8 for 6 Contact Version)

	Height	
3.0mm	(1.167L x 0.677W x 0.118H inches) (29.65L x 17.20W x 3.00H mm)	30

Switch
2 = With Switch

Lead Free
Packing Information
B = Tray
F = Reel

Locating Peg
1 = With Locating Peg
2 = Without Locating Peg



Weight:	Approx. 1.40g	Insulation Resistance:	> 1000 MΩ / 500 VDC	Storage Temperature:	-40°C, ~ +85°C
Contact Principle:	Landed Contact Technology	Wave:	Not applicable	Storage Humidity:	10% ~ 95% RH
Operating Position:	Shaft Up/Down/Horizontal	VaporPhase:	215°C, 30 sec. Max.	Thermal Shock:	-40°C, ~ +85°C, 5 cycles
Durability:	10,000 Cycles Min.	IR Reflow:	230°C, 15 sec. Max.	Damp Heat:	40°C, 90% RH, 500HR
Insulation Material:	Thermoplastic, UL94V-0	Manual Soldering:	360°C, 3 sec. Max.	Salt-Mist:	35°C, 5% NaCl, 48HR
Contact Material:	Gold plating with 3u" Min.	Operating Temperature:	-40°C, ~ +85°C		
Contact Resistance:	50 mΩ typical / 100 mΩ Max.	Operating Humidity:	10% ~ 95% RH		

SIMS46 SERIES

6 or 8 Pin Surface Mount SIM Connector
With Switch & Optional Post

19 APR 07

Scale
NTS

UNLESS OTHERWISE SPECIFIED
DIMENSIONS IN INCHES (MM)
TOLERANCES ARE:
NO DECIMALS ±0.3
ONE PLACE DECIMALS ±0.25
TWO PLACE DECIMALS ±0.15



4235 Earnings Way, New Albany, Indiana, 47150, USA
1-800-782-3486 (USA/Canada/Mexico)
Tel: 812-944-7244
Fax: 812-944-7268
E-mail: mle@mlelectronics.com
Web: www.mlelectronics.com

Revision
C

Sheet
1/2

Revisions

Revision C - (14th April 2011)

Insulator body changed, length was 1.227" (31.16) and is now shorter at 1.167" (29.65).


Weight amended from 0.80g to 1.40g.

Contacts Labeled and note added for 6 contact version for clarity.

Revision B - (22nd Jul 2010)

Plating Information added to specification

Packing Information option added; Reel

<p>UNLESS OTHERWISE SPECIFIED DIMENSIONS IN INCHES (MM)</p> <p>TOLERANCES ARE:</p> <p>NO DECIMALS ±0.3 ONE PLACE DECIMALS ±0.25 TWO PLACE DECIMALS ±0.15</p> <p>ANGLES ±1°</p>	<p>SIMS46 SERIES</p> 	<p>6 or 8 Pin Surface Mount SIM Connector With Switch & Optional Post</p> <p>4235 Earnings Way, New Albany, Indiana, 47150, USA 1-800-782-3486 (USA/Canada/Mexico) Tel: 812-944-7244 Fax: 812-944-7268 E-mail: mle@mlelectronics.com Web: www.mlelectronics.com</p>	<p>19 APR 07</p> <p>Scale NTS</p> <p>Revision C</p> <p>Sheet 2/2</p>
--	---	---	---