

Socket Connector

SPECIFICATIONS

Mechanical

Contact Retention Force: 0.45kg min.
Insertion Force: 0.30kg max. Per Contact
Withdrawal Force: 0.02kg min. Per Contact

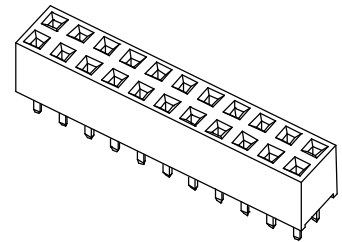
Electrical

Voltage Rating: 200V
Current Rating: 1.0A
Contact Resistance: 25mW max.
Dielectric Withstanding Voltage: 650V AC
Insulation Resistance: 1000MW

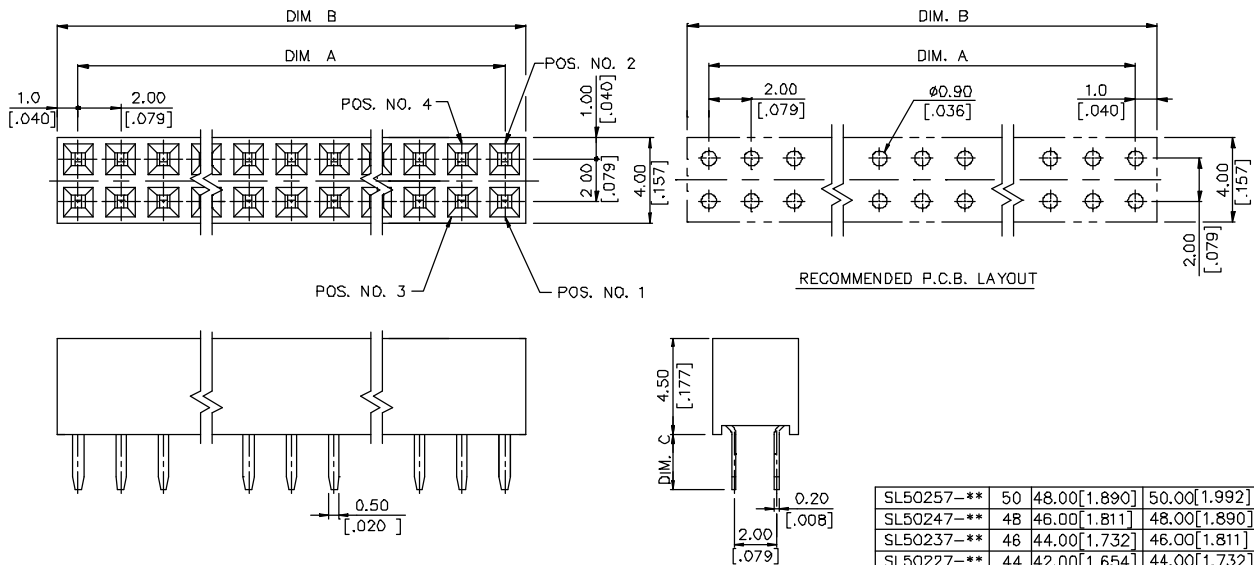
Physical

Housing: Thermoplastic, UL 94V-0 rated in Black Color
Contact: Copper alloy
Plating: See "ORDERING INFORMATION"
Operating Temperature: -40 to +105

SL50 Series
Vertical, T/H Type
Dual Row Receptacle
2.00mm x 2.00mm Grid
[.079" x .079"]



DRAWING



ORDERING INFORMATION

PRODUCT NO.: S L 5 0 * * 7 - * *

Socket Conn. _____
 Regular Solder Type _____
 Termination & Contact Type _____
 NO. of Single Row Pos. _____
 Contact Area Plating _____
 7=15u" Gold

Modification Code
 None: DIM. C=2.5mm
 S: DIM. C=0.90mm
 C1: DIM. C=1.5mm
 D2: DIM. C=1.5mm & #20 Pos. Plug
 P1: DIM. C=2.5mm & #6 Omitted And Plug
 T8: DIM. C=2.5mm & #25, 45th & #46 Plug
 T2: DIM. C=2.5mm & #20 Omitted And Plug
 D7: DIM. C=1.50mm & #26 Plug

SL50257-**-**	50	48.00[1.890]	50.00[1.992]
SL50247-**-**	48	46.00[1.811]	48.00[1.890]
SL50237-**-**	46	44.00[1.732]	46.00[1.811]
SL50227-**-**	44	42.00[1.654]	44.00[1.732]
SL50217-**-**	42	40.00[1.575]	42.00[1.654]
SL50207-**-**	40	38.00[1.496]	40.00[1.575]
SL50197-**-**	38	36.00[1.417]	38.00[1.496]
SL50187-**-**	36	34.00[1.339]	36.00[1.417]
SL50177-**-**	34	32.00[1.260]	34.00[1.339]
SL50167-**-**	32	30.00[1.181]	32.00[1.260]
SL50157-**-**	30	28.00[1.102]	30.00[1.181]
SL50147-**-**	28	26.00[1.024]	28.00[1.102]
SL50137-**-**	26	24.00[.945]	26.00[1.024]
SL50127-**-**	24	22.00[.866]	24.00[.945]
SL50117-**-**	22	20.00[.787]	22.00[.866]
SL50107-**-**	20	18.00[.709]	20.00[.787]
SL50097-**-**	18	16.00[.630]	18.00[.709]
SL50087-**-**	16	14.00[.551]	16.00[.630]
SL50077-**-**	14	12.00[.472]	14.00[.551]
SL50067-**-**	12	10.00[.394]	12.00[.472]
SL50057-**-**	10	8.00[.315]	10.00[.394]
SL50047-**-**	8	6.00[.236]	8.00[.315]
SL50037-**-**	6	4.00[.157]	6.00[.236]
SL50027-**-**	4	2.00[.079]	4.00[.157]
P/N	POS.	DIM. A	DIM. B