

Dual High Speed Programmable Current Mode Amplifiers

GENERAL DESCRIPTION

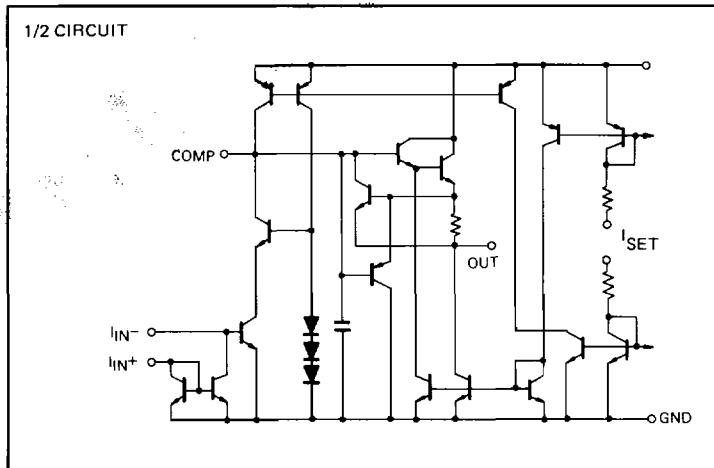
The μPC209/4359 consist of two current differencing input amplifiers. Design emphasis has been placed on obtaining high frequency performance and providing use programmable amplifier operating characteristics.

Two kinds of ICs are available according to reliability, the μPC209 for industry, the μPC4359 for commercial.

FEATURES

- User Programmable Gain Bandwidth Product, Slew Rate, Input Bias Current, Output Stage Current
- High Gain Bandwidth Product
400 MHz for $A_v = 10$ to 100
30 MHz for $A_v = 1$
- High Slew Rate
60 V/μs for $A_v = 10$ to 100
30 V/μs for $A_v = 1$
- Operates from a single 5 V to 22 V supply
- LM359 Direct Replacement

EQUIVALENT CIRCUIT



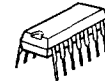
ORDERING INFORMATION

μPC209D



14 pin Ceramic DIP
(Dual In-Line Package)

μPC209C/μPC4359C



14 pin Plastic Molded DIP
(Dual In-Line Package)

CONNECTION DIAGRAM (Top View)

