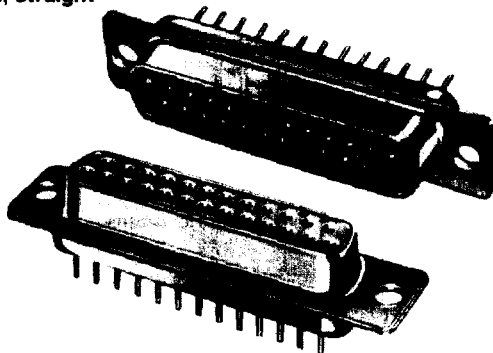


SBM 383 with soldering terminal Type B

Soldering pins for printed circuits

Soldering pins, straight



Special features

- Extremely wide range of applications for job lots in laboratories and for use in mass-produced equipment.
- Few tools required for wiring and assembly.
- Connection-compatible with all subminiature plug connectors with the same number of contacts.

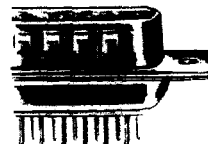
5

Version

- Pin and female connectors: 9, 15, 25, 37 and 50 contacts.
- Soldering pin length 4 mm; 2 mm and 6 mm on request.
- With straight soldering pins, center spacing 2.76 x 2.84 mm.
- Available in performance levels 2 and 3 (performance level 1 on request)

Other versions

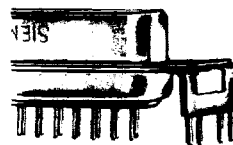
- Pin connectors with screen braiding



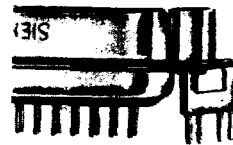
- Pin and female connectors, 9 to 37-contact, with grounding plate and grounding soldering pins, for printed circuits.

Advantages:

- Screened application
- Screw mounting not required on the PC board

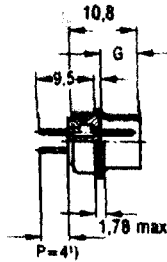
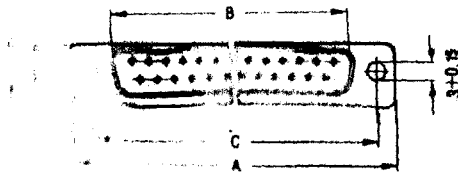


- Pin and female connectors, with riveted stud bolts (only in conjunction with grounding plate)

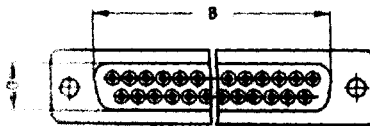


SBM 383 with soldering terminal Type B

Pin connector, 9 to 37 contacts



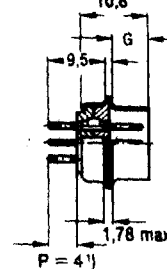
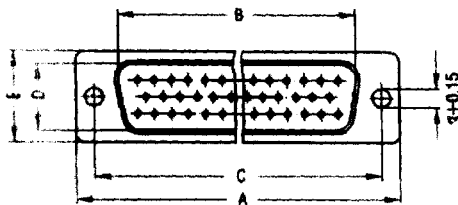
Female connector, 9 to 37 contacts



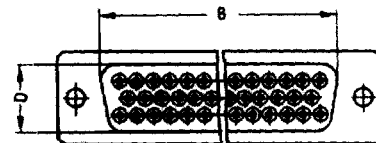
See above for dimensions not specified



Pin connector, 50 contacts



Female connector, 50 contacts



See above for dimensions not specified

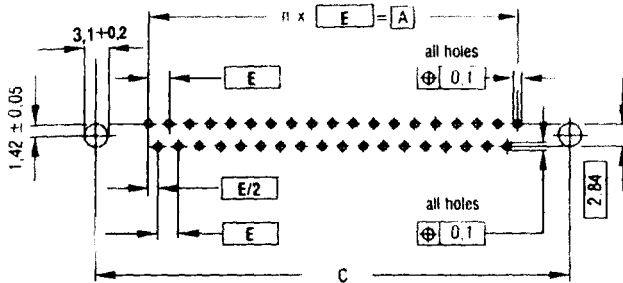


) Soldering pins
2 mm and 6 mm on request

No. of contacts	Connector	Dimensions in mm						
		A	B	C	D	E	G	
	Pin	-0.76	+0.25		+0.25	-0.76	-0.3	
	Female	-0.76	-0.25		-0.25	-0.76	-0.25	
9	Pin	31.19	16.79	25	+0.12/-0.13	8.23	12.93	6.12
9	Female	31.19	16.46	25	+0.12/-0.13	8.02	12.93	6.3
15	Pin	39.52	25.12	33.3	+0.15/-0.1	8.23	12.93	6.12
15	Female	39.52	24.79	33.3	+0.15/-0.1	8.02	12.93	6.3
25	Pin	53.42	38.84	47.04	+/-0.13	8.23	12.93	5.99
25	Female	53.42	38.5	47.04	+/-0.13	8.02	12.93	6.3
37	Pin	69.7	55.3	63.5	+/-0.13	8.23	12.93	5.99
37	Female	69.7	54.96	63.5	+/-0.13	8.02	12.93	6.3
50	Pin	67.31	52.68	61.1	+0.14/-0.11	10.95	15.75	5.99
50	Female	67.31	52.55	61.1	+0.14/-0.11	10.87	15.75	6.3

SBM 383 with soldering terminal Type B

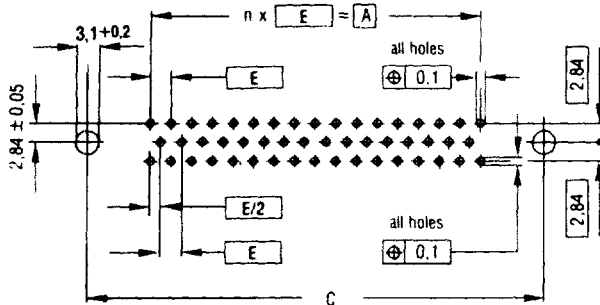
Mounting holes (component side) for printed circuits
Version with 9, 15, 25 and 37 contacts



All holes \varnothing 1:0.1
Through-plated holes
are recommended

No. of contacts	Dimensions in mm			
	n	A	C \pm 0.1	E
9	4	10.96	25.0	2.74
15	7	19.18	33.3	2.74
25	12	33.12	47.04	2.76
37	18	49.68	63.5	2.76
50	16	44.16	61.1	2.76

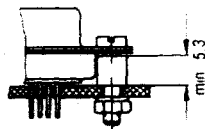
Version with 50 contacts



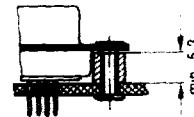
5

Assembly

Screwed



Riveted



Required for assembly:

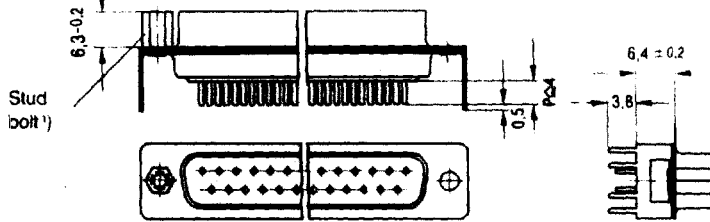
2 Machines screws
2 Washers
2 Hexagon nuts
2 Spacer sleeves \varnothing 6/3.1 x 5.3

2 Hollow rivets
2 Washers
2 Spacer sleeves \varnothing 6/3.1 x 5.3

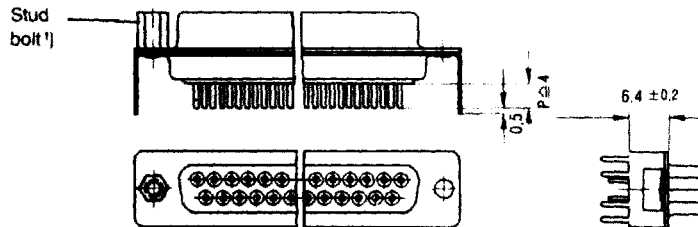
SBM 383 with soldering terminal Type B

Version with grounding plate, grounding soldering pins and stud bolts

Pin connector, 9 to 37 contacts

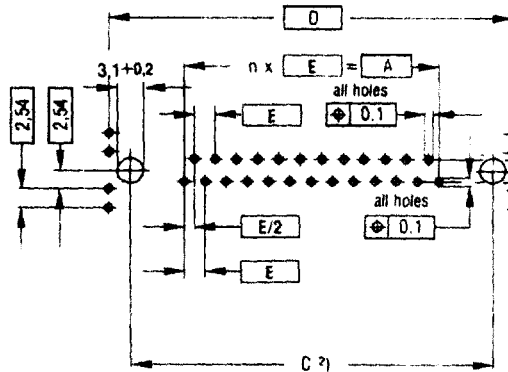


Female connector, 9 to 37 contacts



Mounting holes (component side) for printed circuits

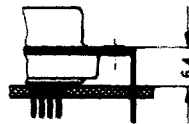
Version with 9, 15, 25 and 37 contacts



All holes $\varnothing 1 \pm 0.1$
Through-plated holes
are recommended

No. of contacts	Dimensions in mm				
	n	A	C ± 0.1	D	E
9	4	10.96	25.0	30.4	2.74
15	7	19.18	33.3	38.8	2.74
25	12	33.12	47.04	52.7	2.76
37	18	49.68	63.5	69.1	2.76

Assembly



Screw or rivet mounting is not necessary on double-sided PC boards. After flow soldering, the plug connector is permanently fixed in the PC board by the pre-mating grounding soldering pins (retention force >100 N) and has a reliable ground connection.

¹⁾ Optionally with or without riveted stud bolts 4-40 UNC (on both sides) for locking to the mating connector.

²⁾ Required in the case of additional screwing or riveting.

SBM 383 with soldering terminal Type B

Order code for SBM 383 with straight soldering pins

Position 1 2 3 4 5 6 7 8 9 10 11 12 13 14 15

V	4	2	2	5	4	-	A	2	★	★	★	-	+	★	★	★
---	---	---	---	---	---	---	---	---	---	---	---	---	---	---	---	---

PC board mounting _____
 1 = Hole Ø 3
 2 = With grounding plate and grounding sold. pins (only 9 to 37-cont.)

Contact type _____
 1 = Center spacing 2.84 x 2.76 tinned

Connector mounting _____
 5 = Hole Ø 3
 6 = Stud bolt 4-40 UNC¹⁾
 9 = Stud bolt M3¹⁾

Connector type _____
 A = Pin connector
 B = Female connector
 C = Pin connector with screen braiding

Contact surface/performance level _____
 2 = Performance level 2
 3 = Performance level 3

Number of contacts _____
 09 = 9-contact
 15 = 15-contact
 25 = 25-contact
 37 = 37-contact
 50 = 50-contact

Example order: V42254-A2115-B325
 SBM 383 with soldering pins, hole Ø 3 mm,
 center spacing 2.84 x 2.76,
 Female connector, 25-contact, performance level 3

Preferred items

V42254-A2115-A309	V42254-A2115-B309	V42254-A2216-B309	V42254-A2216-C309
-A315	-B315	-B315	-C315
-A325	-B325	-B325	-C325
-A337	-B337		
-A350	-B350		

Packaging

Type: Blister pack

No of cont.	Minimum order quantity ²⁾	No of cont.	Standard packaging unit
9	} 10	9	} 70
15		15	
25		25	
37	} 12	37	} 60
50		50	
	} 11	50	55

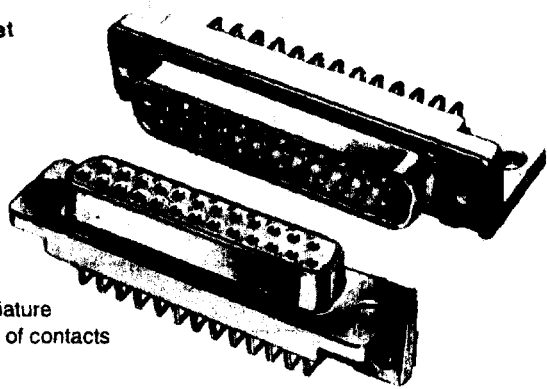
¹⁾ Only in the case of PC board mounting with grounding plate and grounding soldering pins

²⁾ Minimum separable packaging unit; supplied as a multiple of the minimum order quantity or the standard packaging

5

SBM 383 with soldering terminal Type B

Soldering pins angled at 90°
(angle connectors), with plastic bracket



Special features

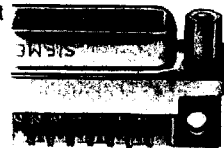
- Plastic dielectric with integrated mounting brackets
- Connection-compatible with all subminiature plug connectors with the same number of contacts

Version

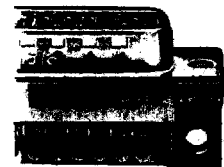
- Pin and female connectors: 9, 15, 25, 37 and 50 contacts
- With angled soldering pins, center spacing 2.76 x 2.54 mm or 2.76 x 2.84 mm (variants 2 and 3 in accordance with DIN 41652)
- Available in performance levels 2 and 3

Other versions

- Pin and female connectors with threads (instead of hole $\varnothing 3$), on request or pin and female connectors with stud bolts

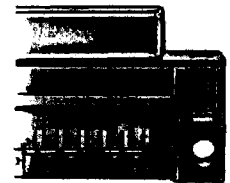


- Pin connectors with screen braiding

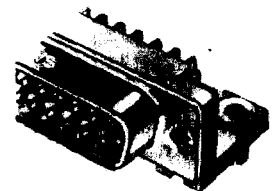


- Pin and female connectors with grounding plate
Two variants of the grounding plate are available:
 - Grounding plate for contacting on the upper side of the PC board
 - Grounding plate (as above) with grounding soldering pin for additional contacting on the underside of the PC board (preferred)

Advantage: Reliable ground connection

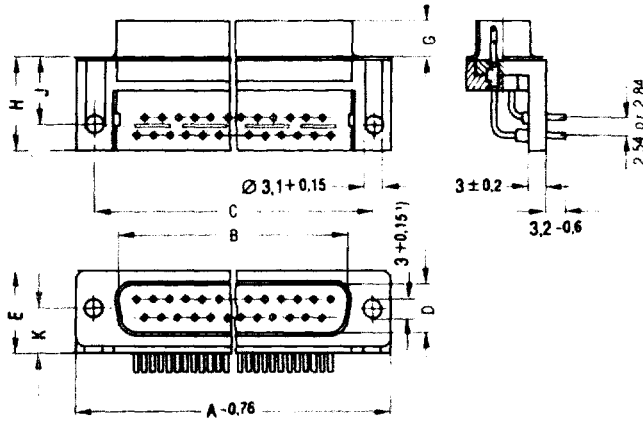


- PC board mounting with mounting clip
Advantage:
 - Very short assembly time
 - Reliable, electrical ground connection.
 - Interference fit after flow soldering similar to a screwed connection ≥ 150 N

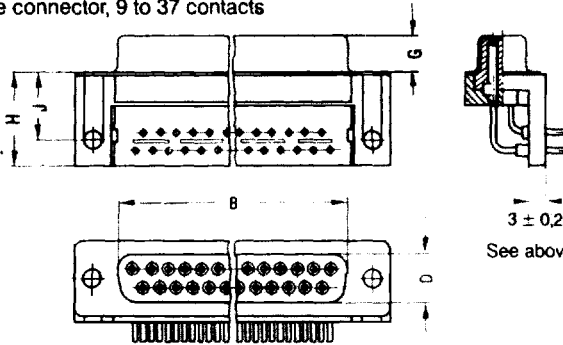


SBM 383 with soldering terminal Type B

Pin connector, 9 to 37 contacts



Female connector, 9 to 37 contacts



See above for dimensions not specified

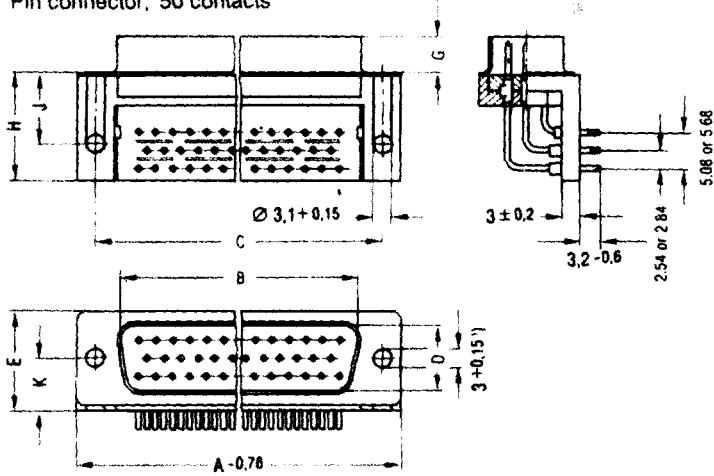
1) Connector mounting.
thread M3 or 4-40
UNC on request

No. of contacts	Connector	Dimensions in mm									
		A	B	C	D	E	G	H	J	K	
	Pin	-0.76	-0.25	-0.25	+0.25	max.	-0.3	max.	± 0.2	± 0.2	
	Female	-0.76	-0.25	-0.25	-0.25	max.	-0.25	max.	± 0.2	± 0.2	
9	Pin	31.19	16.79	25.12	8.23	13.9	6.12	16	11.7	7.3	
9	Female	31.19	16.46	25.12	8.02	13.9	6.3	16	11.7	7.3	
15	Pin	39.52	25.12	33.45	8.23	13.9	6.12	16	11.7	7.3	
15	Female	39.52	24.79	33.45	8.02	13.9	6.3	16	11.7	7.3	
25	Pin	53.42	38.84	47.17	8.23	13.9	5.99	16	11.7	7.3	
25	Female	53.42	38.5	47.17	8.02	13.9	6.3	16	11.7	7.3	
37	Pin	69.7	55.3	63.63	8.23	13.9	5.99	16	11.7	7.3	
37	Female	69.7	54.96	63.63	8.02	13.9	6.3	16	11.7	7.3	

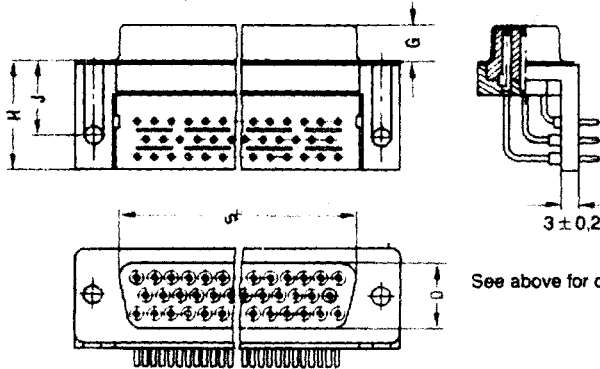
5

SBM 383 with soldering terminal Type B

Pin connector, 50 contacts



Female connector, 50 contacts



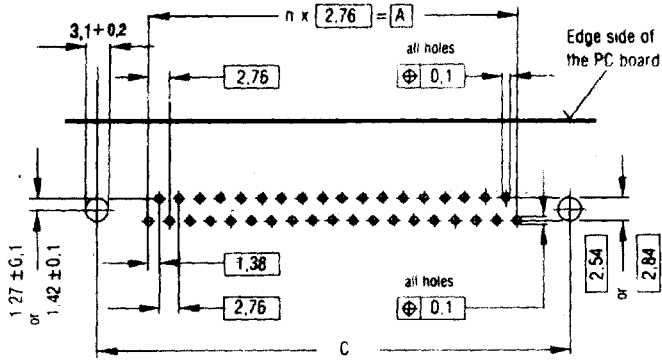
See above for dimensions not specified

1) Connector mounting,
thread M3 or 4-40
UNC on request

No. of contacts	Connector	Dimensions in mm								
		A	B	C	D	E	G	H	J	K
	Pin	-0.76	-0.25	-0.25	+0.25	max.	-0.3	max.	±0.2	±0.2
	Female	-0.76	-0.25	-0.25	-0.25	max.	-0.25	max.	±0.2	±0.2
50	Pin	67.31	52.68	61.24	10.95	16.75	5.99	18.6	13.1	8.7
50	Female	67.31	52.55	61.24	10.87	16.75	6.3	18.6	13.1	8.7

SBM 383 with soldering terminal Type B

Mounting holes (component side) for printed circuits
Version with 9, 15, 25 and 37 contacts

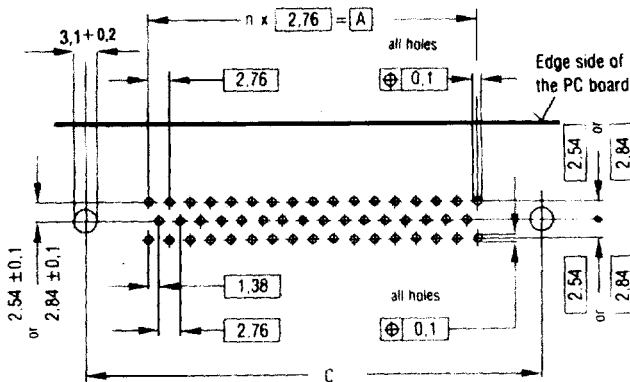


All holes $\varnothing 1^{+0.1}$
Through-plated holes are recommended (in the case of clip mounting, also hole $\varnothing 3.1$ through-plated, soldering lug at least $\varnothing 6$)

No. of contacts	Dimensions in mm		
	n	A	C ± 0.1
9	4	11.04	25.0
15	7	19.32	33.3
25	12	33.12	47.04
37	18	49.68	63.5
50	16	44.16	61.1

5

Version with 50 contacts

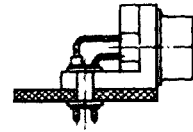
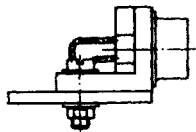


All holes $\varnothing 1^{+0.1}$
Through-plated holes are recommended (in the case of clip mounting, also hole $\varnothing 3.1$ through-plated, soldering lug at least $\varnothing 6$)

Assembly

Screwed

Riveted



Required for assembly:

2 machine screws
2 washers
2 hexagon nuts

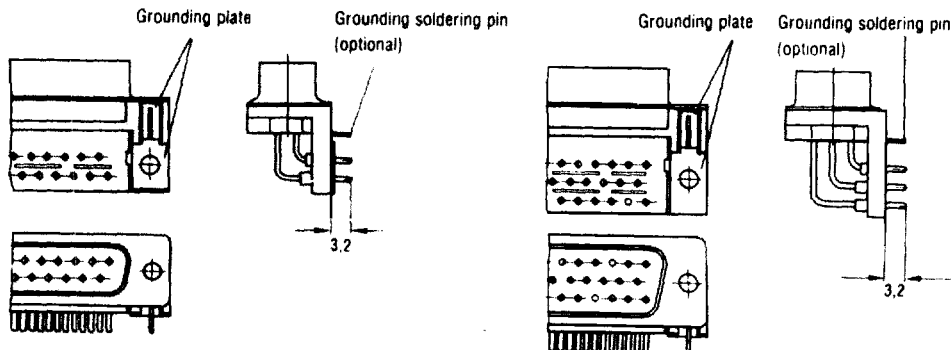
2 hollow rivets
2 washers

SBM 383 with soldering terminal Type B

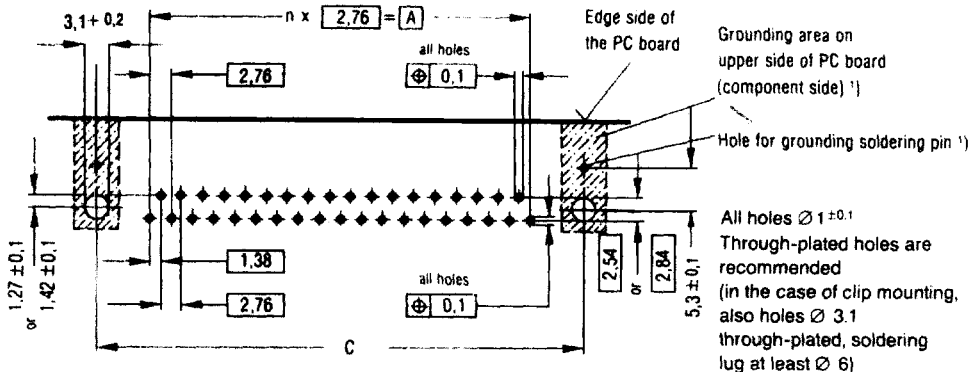
Version with grounding plate and grounding soldering pin

Pin or female connector, 9 to 37 contacts

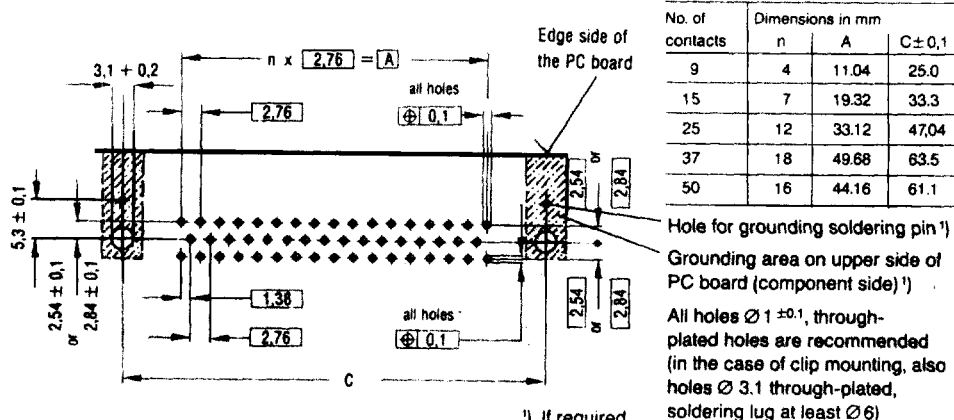
Pin or female connector, 50 contacts



Mounting holes (component side) for printed circuits
Version with 9, 15, 25 and 37 contacts



Version with 50 contacts



No. of contacts	Dimensions in mm		
	n	A	C ± 0,1
9	4	11.04	25.0
15	7	19.32	33.3
25	12	33.12	47.04
37	18	49.68	63.5
50	16	44.16	61.1

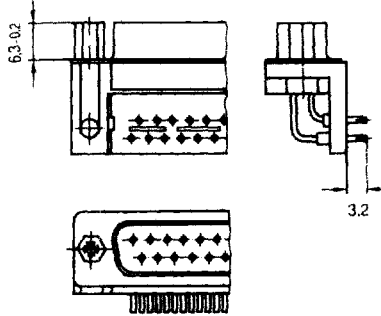
¹⁾ If required

All holes $\text{Ø } 1 \pm 0.1$, through-plated holes are recommended (in the case of clip mounting, also holes $\text{Ø } 3.1$ through-plated, soldering lug at least $\text{Ø } 6$)

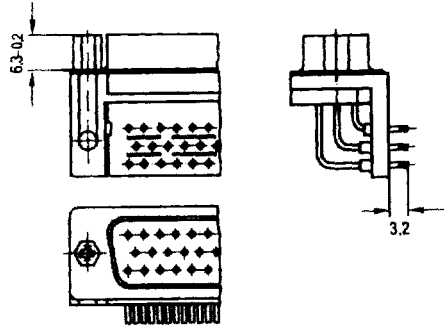
SBM 383 with soldering terminal Type B

Version with mounting clip

Pin or female connector, 9 to 37 contacts

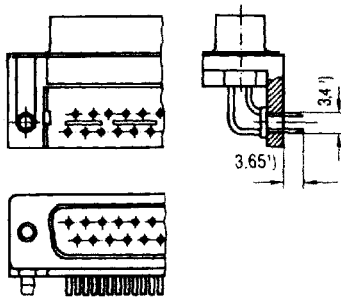


Pin or female connector, 50 contacts

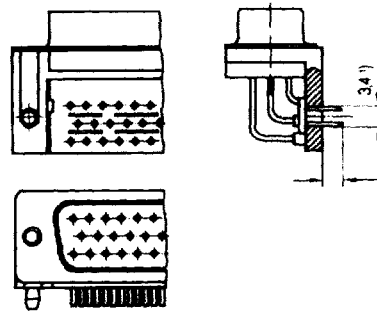


Version with mounting clip

Pin or female connector, 9 to 37 contacts



Pin or female connector, 50 contacts



5

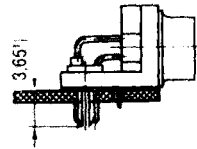
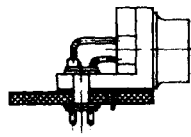
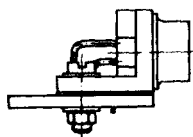
Assembly

With grounding plate

Mounting clip

Screwed

Riveted



Required for assembly: 2 Machine screws
2 Washers
2 Hexagon nuts

2 Hollow rivets
2 Washers

¹⁾ Maximum dimension

SBM 383 with soldering terminal Type B

Order code for SBM 383 with soldering pins angled at 90° - plastic bracket

Position	1	2	3	4	5	6	7	8	9	10	11	12	13	14	15		
	V	4	2	2	5	4	-	A	3	★	★	★	-	+	★	★	★

Bracket version _____

- 1 = Plastic bracket with grounding plate
- 2 = Plastic bracket
- 3 = Plastic bracket with grounding plate and grounding sold. pin²⁾

Contact type/PC board mounting _____

- 1 = Tinned / 2.84 x 2.76
- 2 = Tinned / 2.54 x 2.76
- 3 = Tinned / 2.84 x 2.76 / with clip
- 4 = Tinned / 2.54 x 2.76 / with clip

Connector mounting _____

- 1 = Thread 4-40 UNC³⁾
- 3 = Thread M3³⁾
- 6 = Hole Ø 3
- 7 = Stud bolt 4-40 UNC
- 9 = Stud bolt M3

Connector type _____

- A = Pin connector
- B = Female connector
- C = Pin connector with screen braiding¹⁾

Contact surface/performance level _____

- 2 = Performance level 2
- 3 = Performance level 3

Number of contacts _____

- 09 = 9-contact
- 15 = 15-contact
- 25 = 25-contact
- 37 = 37-contact
- 50 = 50-contact

Example order: V42254-A3216-B325

SBM 383 with soldering pins 90°, plastic bracket, center spacing 2.84 x 2.76, hole Ø 3 mm, female connector with 25 contacts, performance level 3

¹⁾ Only on version with grounding plate with/without grounding soldering pin

²⁾ Preferred

³⁾ On request

SBM 383 with soldering terminal Type B

Preferred items

V42254-A3216-A309	V42254-A3216-B309	V42254-A3226-A309	V42254-A3226-B309
-A315	-B315	-A315	-B315
-A325	-B325	-A325	-B325
-A337	-B337	-A337	-B337
-A350	-B350	-A350	-B350
V42254-A3326-B309	V42254-A3326-C309	V42254-A3327-B309	V42254-A3327-C309
-B315	-C315	-B315	-C315
-B325	-C325	-B325	-C325
-B337	-C337	-B337	-C337
V42254-A3346-B309	V42254-A3346-C309		
-B325	-C325		

Packaging

Type: Blister pack

No. of cont.	Minimum order quantity ¹⁾	No. of cont.	Standard packaging
9	} 8	9	} 56
15		15	
25		25	} 40
37	37		
50	7	50	35

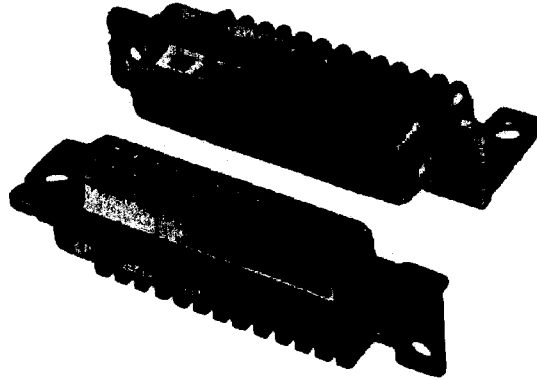
¹⁾ Smallest separable packaging unit;
Supplied as multiple of the minimum order quantity or standard packaging

5

SBM 383 with soldering terminal Type B

Soldering pins angled at 90° (angle connector), with metal bracket,
installation height 3.6 mm

(Variant 1 in accordance with DIN 41652)



Advantage:
Space-saving mounting

Special features

- Metal bracket for optimum grounding.
- Pin connectors always with screen braiding.
- Solid pin contacts
- Spring contacts with two mutually independent spring zones ensure low insertion forces.
- Contacts with interference fit.
- Connection-compatible with all subminiature plug connectors with the same number of contacts.

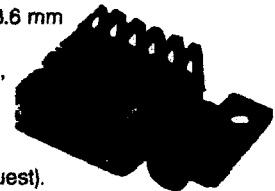
Version

- Pin and female connectors: 9, 15, 25 and 37-contact
- With angled soldering pins, center spacing 2.54 x 2.74 mm or 2.76 mm
- Particularly space-saving mounting possible with installation height 3.6 mm

Advantage:

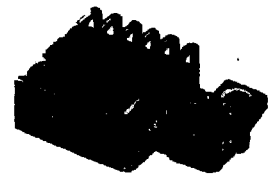
Joint installation with plug connectors in accordance with DIN 41612, Type C, possible in only 3 modular spacings = 15.4 mm with the mounting system in accordance with DIN 41494.

- Available in performance levels 1, 2 and 3.
- Pin connectors with screen braiding (without screen braiding on request).



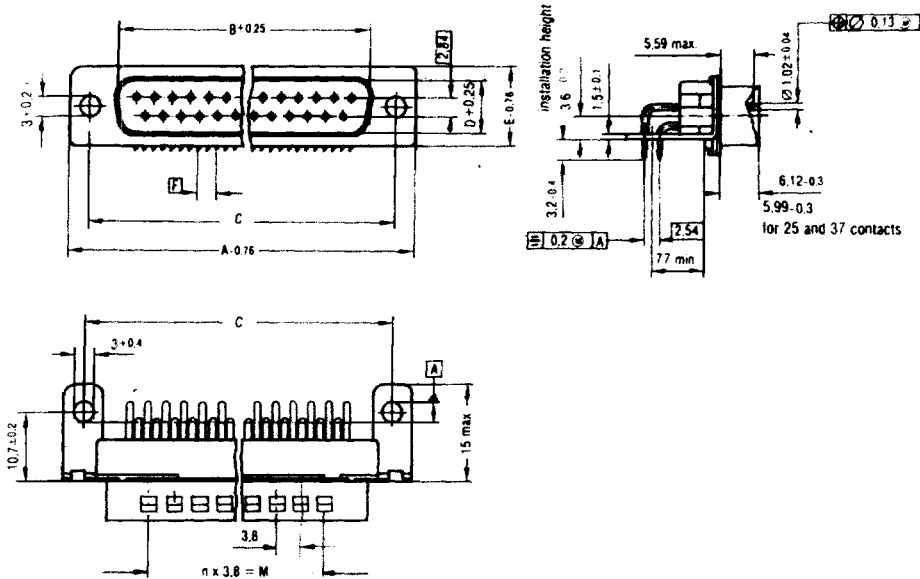
Other versions

- Pin and female connectors with threads (instead of hole $\varnothing 3$)
or
pin and female connectors with stud bolts
- PC board mounting with mounting clip
 - Very short mounting time
 - Reliable, electrical ground connection
 - Interference fit after flow soldering, similar to a screwed connection ≥ 150 N.



SBM 383 with soldering terminal Type B

Pin connector, 9 to 37 contacts



5

No. of cont.	Dimension							
	A	B	C	D	E	F	M	n
09	31.19	16.79	25.0 ^{+0.13}	8.23	12.93	2.74	7.6	2
15	39.52	25.12	33.3 ^{+0.15}	8.23	12.93	2.74	15.2	4
25	53.42	38.84	47.04 ^{+0.13}	8.23	12.93	2.76	26.6	7
37	69.7	55.30	63.5 ^{+0.13}	8.23	12.93	2.76	41.8	11

1) Connector mounting, optionally also with thread M3 or 4 - 40 UNC

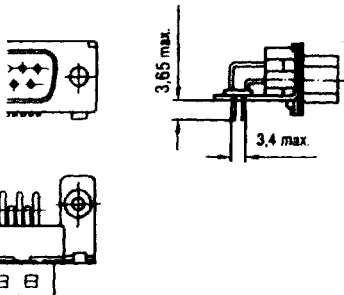
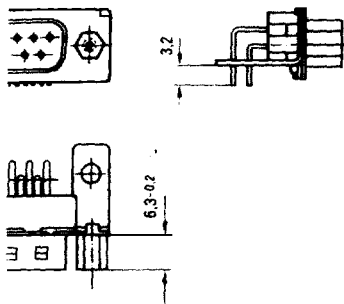
SBM 383 with soldering terminal Type B

Version with
stud bolt

Version with
mounting clip

Pin and female connector

Pin and female connector

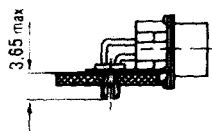
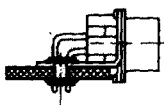
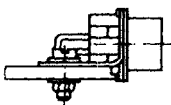


Assembly

Screwed

Riveted

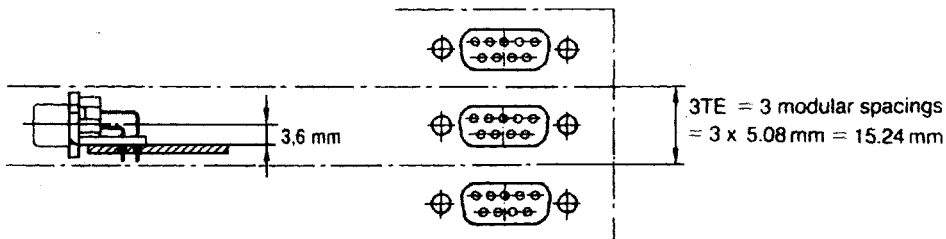
Mounting clip



Example installation:

Mounting system in accordance with DIN 41494

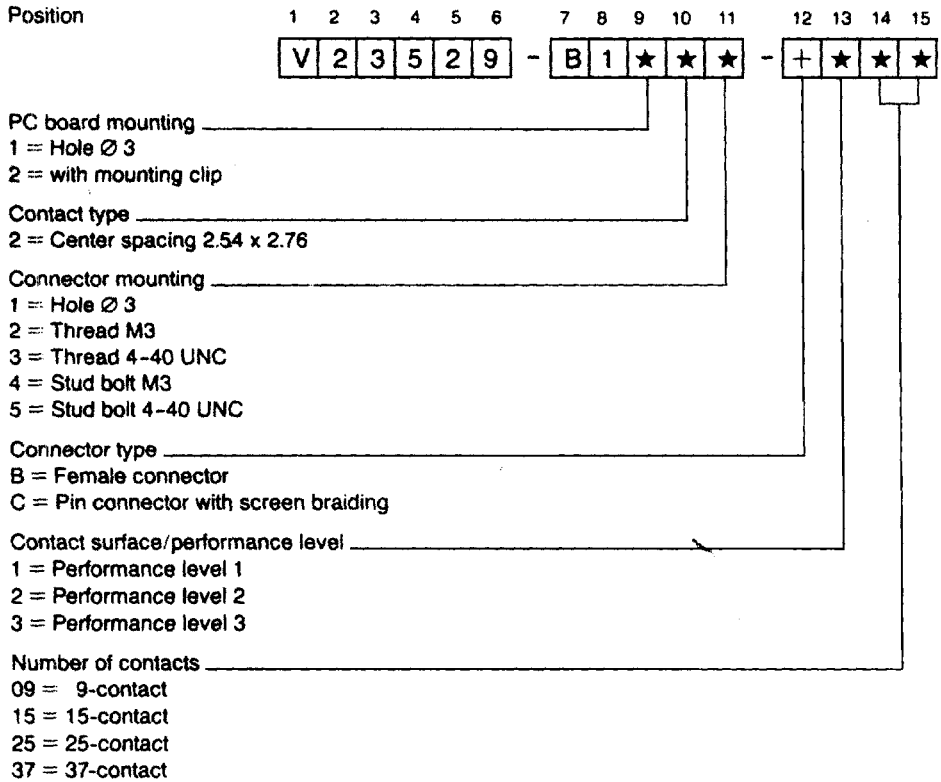
Front panel spacing 3 modular spacings
(3 x 5.08 mm = 15.24 mm)



Joint installation possible with plug connectors in accordance with DIN 41612,
Type C, in only 3 modular spacings $\cong 15.24$ mm

SBM 383 with soldering terminal Type B

Order code for SBM 383 with soldering pins angled at 90° - metal bracket, installation height 3.6 mm



Example order: V23529-B1221-B325

SBM 383 with soldering pins 90°, metal bracket, installation height 3.6 mm, with mounting clip, hole Ø 3 mm, female connector 25-contact, performance level 3

Packaging

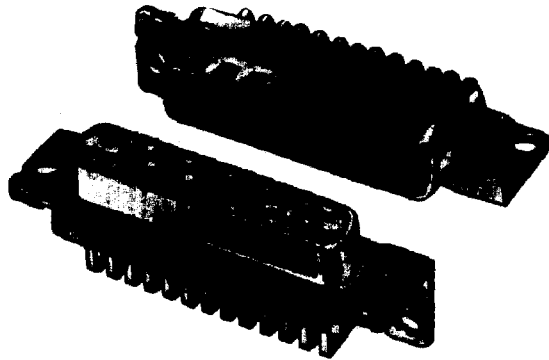
Type: Blister pack

No. of cont.	Minimum order quantity ¹⁾	No. of cont.	Standard packaging unit
9	} 10	9	} 70
15		15	
25		25	} 50
37		37	

¹⁾ Smallest separable packaging unit; supplied as multiple of the minimum order quantity or standard packaging unit

SBM 383 with soldering terminal Type B

Soldering pins angled at 90° (angle connector), with metal bracket, installation height 7.3 mm
(Variant 2 and 3 in accordance with DIN 41652)



Advantage:
Space-saving mounting

Special features

- Metal bracket for optimum grounding.
- Pin connectors always with screen braiding.
- Solid pin contacts.
- Spring contacts with two mutually independent spring zones ensure low insertion forces.
- Contacts with interference fit.
- Connection-compatible with all subminiature plug connectors with the same number of contacts.

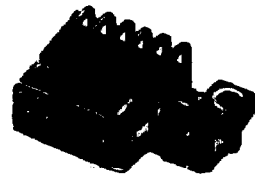
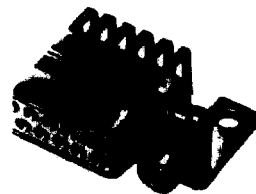
5

Version

- Pin and female connectors: 9, 15, 25 and 37-contact
- With angled soldering pins, center spacing 2.54 x 2.74 mm resp. 2.76 mm (variant 2) or 2.84 x 2.74 mm resp. 2.76 mm (variant 3 in accordance with DIN 41652)
- Standard installation height 7.3 mm; other installation heights on request
- Pin connectors with screen braiding (without screen braiding on request)
- Available in performance levels 1, 2 and 3.

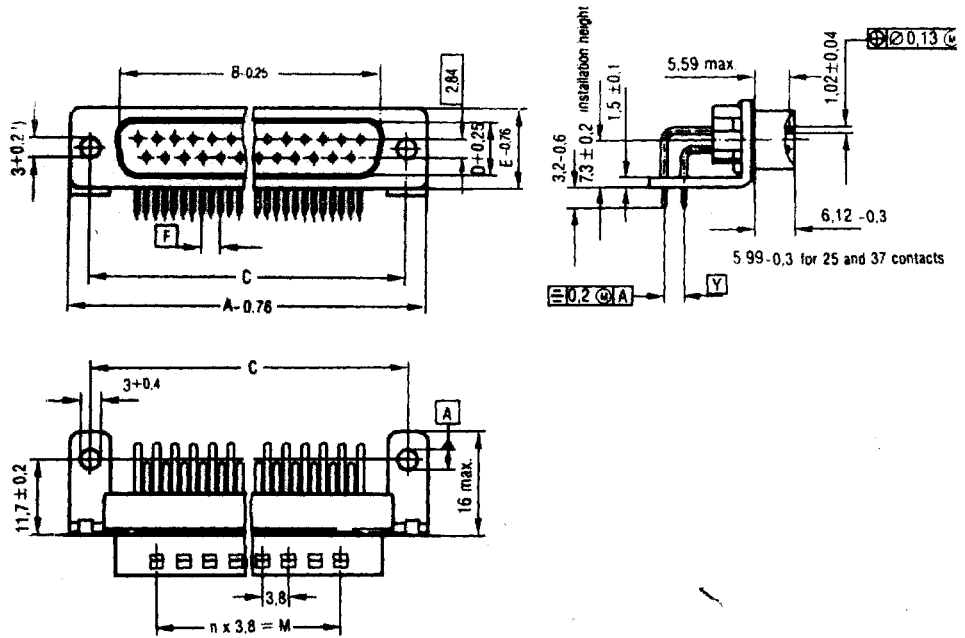
Other versions

- Pin and female connectors with threads (instead of hole $\varnothing 3$)
or
pin and female connectors with stud bolts
- PC board mounting with mounting clip
 - Very short mounting time
 - Reliable, electrical ground connection
 - Interference fit after flow soldering, similar to a screwed connection ≥ 150 N.



SBM 383 with soldering terminal Type B

Pin connector, 9 to 37 contacts

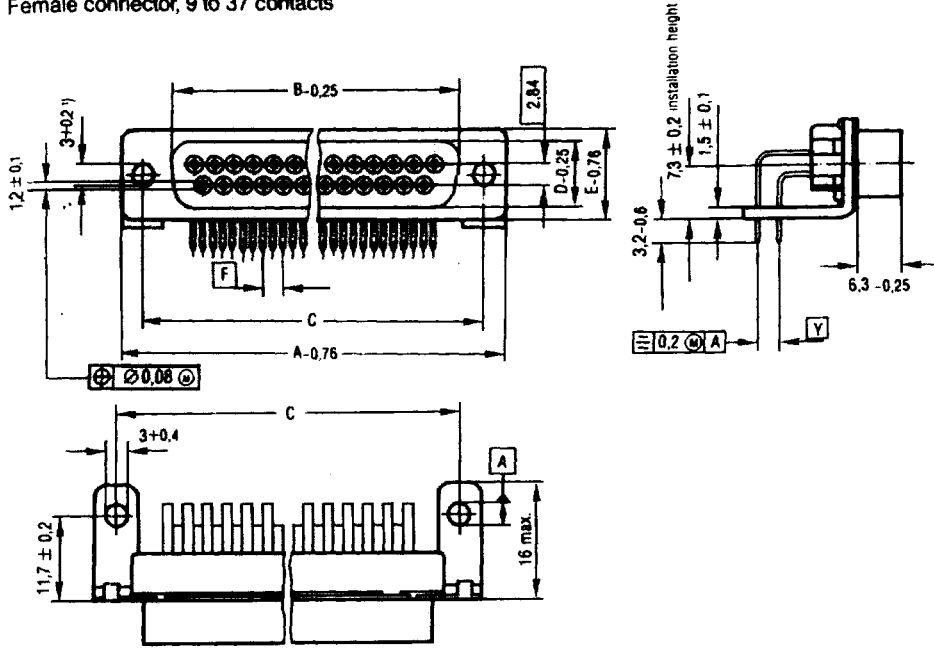


No. of cont.	Dimensions							n
	A	B	C	D	E	F	M	
09	31.19	16.79	25.0 ^{+0.12} _{-0.13}	8.23	12.93	2.74	7.6	2
15	39.52	25.12	33.3 ^{+0.15} _{-0.15}	8.23	12.93	2.74	15.2	4
25	53.42	38.84	47.04 ^{+0.13} _{-0.13}	8.23	12.93	2.76	26.6	7
37	69.7	55.30	63.5 ^{+0.13} _{-0.13}	8.23	12.93	2.76	41.8	11

¹⁾ Connector mounting, optionally with thread M3 or 4- 40 UNC

SBM 383 with soldering terminal Type B

Female connector, 9 to 37 contacts

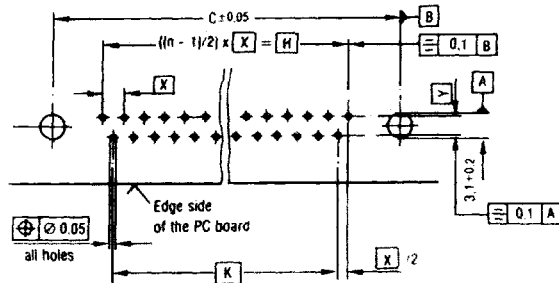


5

No. of cont.	Dimensions					
	A	B	C	D	E	F
9	31.19	16.46	25.0 ^{+0.12} _{-0.13}	8.02	12.93	2.74
15	39.52	24.79	33.3 ^{+0.15} _{-0.1}	8.02	12.93	2.74
25	53.12	38.5	47.04 ^{+0.13} _{-0.13}	8.02	12.93	2.76
37	69.7	54.96	63.5 ^{+0.13} _{-0.13}	8.02	12.93	2.76

1) Connector mounting, optionally also with thread M3 or 4-40 UNC.

Mounting holes (component side) for printed circuits

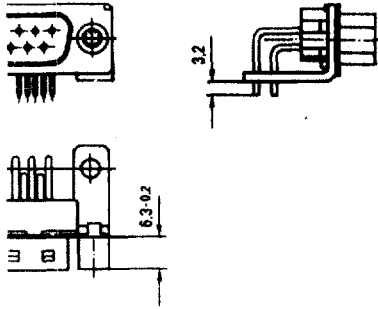


No. of cont.	C	H	K	X	Y
9	25	10.96	8.22	2.74	2.54
15	33.3	19.18	16.44	2.74	or
25	47.04	33.12	30.36	2.76	
37	63.5	49.68	46.92	2.76	2.84

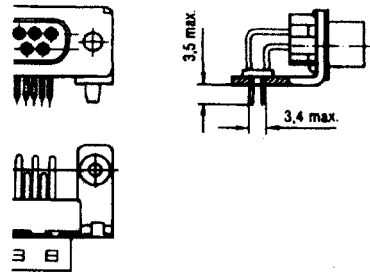
All holes $\varnothing 1 \pm 0.1$ (minimum $\varnothing 0.8 \pm 0.05$), through-plated holes are recommended. (In the case of clip mounting, also holes $\varnothing 3.1$ through-plated, soldering lug at least $\varnothing 6$)

SBM 383 with soldering terminal Type B

Version with
stud bolt

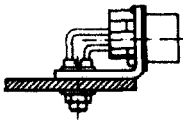


Version with
mounting clip

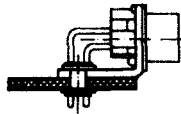


Assembly

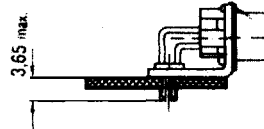
Screwed



Riveted



Mounting clip



Example installation:
Mounting system in accordance with DIN 41494

Front panel spacing 4 modular spacings
(4 x 5.08 mm = 20.32 mm)

